



North Olympic Group Newsletter

Explore, Enjoy, Protect the Planet

Sept - Oct, 2014
Page 1

In this issue

Letter From NOG Chair _____	1
Letter (cont.), Kickoff Invitation ____	2
Important Call to Action _____	3
Call to Action (cont) _____	4
Call (cont), Little River Quarry ____	5
Political Updates _____	6
Political Updates (Cont) _____	7
Don't Dig – Don't Risk It _____	8
Items of Note _____	9
Items of Note (Cont) _____	10

Meetings and Events

- Sept 7** – Screening of movie “Disruption” in PA and PT (Page 9)
- Sept 9** – Bruch campaign kickoff (Page 2)
- Sept 11** – ExCom Meeting at Sequim Library, 1 to 3 PM
- Sept 20** – People’s Climate March events in Port Angeles & Sequim (Pages 3 &4)
- Sept 21** – People’s Climate March event in Port Townsend (Page 5)
- Sept 25**– Sludge Presentation in Port Angeles (Page 10)
- Oct 2** – NOG members potluck in Sequim (Page 9)
- Oct 4** – Clallam County Farm Tour (Page 10)
- Oct 9** – ExCom Meeting in Port Townsend 1 to 3 PM - Contact Monica at monicailet@gmail.com for more information
- Oct 10 & 11** – Port Angeles Crab Fest (Page 10)
- Oct 16** – Sludge Presentation in Sequim (Page 10)
- Nov 4** – General Election (Pages 6 & 7)



A LETTER FROM MONICA FLETCHER NOG CHAIR

The North Olympic Group (NOG) of the Washington Sierra Club Chapter is your local activist and watchdog group for all manner of environmental concerns right here on the North Olympic Peninsula. When you send in your dues as a supporter of Sierra Club you are immediately hooked into the local communication structure that allows us to correspond with you by email and newsletter. Prior to the formation of NOG you might have noted that what your dues supported was further afield in focus. Seattle and its environs were the center of the action and the Peninsula was occasionally attended to. A group of concerned neighbors formed NOG and over the last four years campaigns of great importance and local concern are being carried out for the region's good.

This focused local work needs your support and activism in order to continue its close-up concentration on our area. We need volunteers that are ready to do more than send in their dues. We need more people who are willing to help read, comment, and plan for the Peninsula's future. The North Olympic Group needs to grow its influence and protect its home.

Here are the areas of need.

We need Board members, technically called Executive Committee members, who help set the course of our concerns. We especially look forward to more ExComm members from the Jefferson County area as that would balance our focus between Clallam and Jefferson. ExComm member's role is one of meeting once a month (Second Thursday) and discussing plans for conservation, outings, events, and official comments for us to make and to advise our members. We are looking for good readers, writers, communicators, (much work is done by email) science types, policy crafters and political animals. It is a fine group to work with. Please call me if you are interested. Contact Monica Fletcher at 360-379-3136 or monicailet@gmail.com



North Olympic Group Newsletter

Explore, Enjoy, Protect the Planet

Sept - Oct, 2014
Page 2

A LETTER FROM MONICA FLETCHER (*continued*)

We need Political Committee members for both counties. It is here that elections are tracked and endorsements are offered through strategic questions of importance. This is some of the most effective work we do. For Jefferson County contact Peter Guerrero at 1-510-421-1071 or studio374photography@gmail.com . For Clallam County call Darlene Schanfald (above).

We seek a Member Communications person to handle our mass emailings, at most three per month, and liaison with the National membership list that controls all of our mailings. Contact Mary Porter Solberg for more info at 360-683-8072 or mshikernut@gmail.com.

We need more Outings leaders: Call Peter Guerrero (above) for more info and to investigate how NOG can make a donation toward your training requirements.

We need an events whiz, a person who could enjoy putting on Membership Meetings, author readings, travel shows, and could lend a savvy hand to the detail management. Please call me if you are interested. Contact Monica Fletcher at 360-379-3136 or monicaftet@gmail.com

Lastly, we just want to see more members at our events and at our ExComm meetings. **So step on out of your sleepy card-carrying Sierra Club role and get active with the locals.**

*Thank you,
Monica*

YOU ARE CORDIALLY INVITED

*A Kickoff Fundraiser for Sissi Bruch will be held Tuesday, September 9 at 5:30 PM at the Clallam County Democratic Headquarters, 124 W. First St, Port Angeles. You'll have a chance **to listen to her positions on critical issues and to ask questions.** Please contact Darlene Schanfald at darlenes@olympus.net to RSVP. **It is a Feather in the NOG Cap if we have a good showing of our Sierra Club members.***

Volunteers are needed for a range of help to make this a successful campaign. Clallam County is a huge territory to cover. Please attend the Kickoff Fundraiser and sign up to help. Any amount and ways of help will be appreciated.

Help is needed to: develop fundraisers, doorbell, make get out the vote calls, put up a sign in your home window and/or car window.

HOW TO DONATE

Electronic donations can be taken on line at <http://votesissi.com>.

Checks can be sent to:

Vote Sissi

P.O. Box 436

Port Angeles, WA 98362



North Olympic Group Newsletter

Explore, Enjoy, Protect the Planet

Sept - Oct, 2014
Page 3

Group Executive Committee

We are governed by seven volunteers, with lots of help by our conservation committees. Meetings are generally held on the second Thursday of each month. **All Sierra Club members are welcome to attend.**

Chair: Monica Fletcher

Vice Chair: Robert Sextro

Alternate Vice Chair: Darlene Schanfald

Secretary: Bill Volmut

Treasurer: Monica Fletcher

Executive Committee:

Norm Baker, Monica Fletcher,
Peter Guerrero, Darlene Schanfald,

Robert Sextro, Bill Volmut, John Woolley

Contact info:

Norman Baker:

ntbakerphd@gmail.com

Monica Fletcher:

monicaflet@gmail.com

Peter Guerrero

studio374photography@gmail.com

Darlene Schanfald:

darlenes@olympus.net

Robert Sextro:

robert.sextro@noblis.com

Bill Volmut:

bill.volmut@gmail.com

John Woolley:

woolley@tfon.com

Newsletter Editor – Janet Marx

Janetmarx_76@msn.com

AN IMPORTANT CALL TO ACTION

This September, world leaders, including President Obama, are coming to New York City for a landmark UN summit on the climate crisis. Sierra Club members, along with members of 350.org and hundreds of other allied organizations will be there to greet them on September 21st as the **People's Climate March** - the world's largest climate change demonstration to date.

It's time to stand up for the future. Unless we can protect the planet and turn this economy around, our children aren't going to have a chance to thrive. That's why it's critical we make this the largest climate demonstration in history. **The success of the summit depends a lot more on us than it does on our politicians.** If we seize this moment and show real political power, it could open up the space for meaningful action.

Communities around the country are planning local actions in order to show solidarity with the NY march, make an impact and send a message to local politicians. **You can do something locally.**

Events are planned for Port Angeles, Sequim and Port Townsend.

We need a huge Sierra Club response – each member should have “feet to the ground” at one of these events.

PORT ANGELES EVENT

Olympic Climate Action, a Clallam County group concerned with climate change is planning an event in Port Angeles. They have invited the North Olympic Group to participate. The event is still somewhat “under construction” with the following proposed schedule.

“People’s Climate March: Connecting the Dots”

Saturday, Sept. 20, venue hopefully PA City Pier

10-10:30 semi-silent vigil led by religious communities (or family time at the beach)

10:30-11:30 rally with speakers from a variety of organizations speaking about why their group is concerned about climate

11:30-12:30 march around downtown PA, ending at the observation deck at the end of City Pier for photographs

12:30-1:00 semi-silent vigil to close the activity (or family time at the beach)

(Continued)

AN IMPORTANT CALL TO ACTION (Continued)

PORT ANGELES (continued)

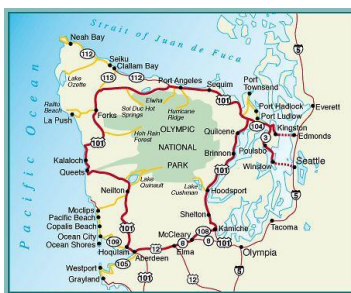
Please volunteer to help make this event a success by contacting Sierra Club Member Char McCan at char73@live.com or phoning Char at 565-8039.

SEQUIM EVENT

Attend the following informative program

Climate Change Action on the Olympic Peninsula

Saturday, September 20th, 2014 • 10 a.m. - Noon



Bob Lynette will present the effects that climate change are expected to have on the Olympic Peninsula, and what Washington State, Clallam County, and local citizens are doing to understand and mitigate the impacts. Bob has over 50 years' experience in project management and development of renewable energy worldwide. He has taught accredited climate change courses for Antioch, City University of Seattle, and Peninsula College.

All are welcome to attend this presentation. Donations are welcome to support the educational programs of the Dungeness River Audubon Center. Light refreshments will be provided.

Dungeness River Audubon Center • 2151 W. Hendrickson Rd. • Sequim, WA 98382

Immediately following the program there will be a gathering at the Railroad Bridge for a photo op and a short walk along the Discovery Trail to the Walmart parking lot carrying signs and banners. Sierra Club "Sequimites" are asked to bring signs reflecting their concerns or suggestions for reducing climate change impact. Contact Sierra Club Member Anita Matthay at amatthay@olypen.com for additional information.

AN IMPORTANT CALL TO ACTION (Continued)



PORT TOWNSEND

Rally, song, and march at Pope Marine Park

The Fossil Fuel NW Action group will hold a rally and march on Sunday, Sept. 21, beginning at 3 PM at the Pope Marine Park waterfront.



All of us need to be involved or nothing happens

Little River Rock Quarry Update

The word is that recently Mike Shaw of Shaw and Lane resumed his plan to mine his forty acres which borders the upper Elwha River. The state Department of Natural Resources (DNR) gave Shaw their approval for mining one acre. He can do this without any permit, public input or SEPA process etc. Toby Thaler, UERCC counsel, is working to get it stopped.

There is a provision in the surface mining laws that say one acre in eight can be mined. AS LONG AS THE INTENT IS NOT TO DEVELOP A SURFACE MINE. For sixteen years Mike Shaw has said his intent is to develop a forty acre gravel quarry with a seventy year lifespan. DNR apparently has just taken a blind eye approach. They should know Shaw's intent as they were involved when they issued him a forest practices permit to mine 3 acres back in 2007. Why doesn't Shaw apply for a reclamation permit from DNR? Simple, this one acre strategy is a big foot in the door. Keep bulldozing away on the long term goal.

Clallam Co. DCD said they have no jurisdiction in the matter as Superior Court Judge George Wood removed it from Critical Areas.

Interestingly, this one acre site is not at the top where Shaw intends to start the 40 acre mine; it's at the bottom above the Olympic Hot Springs Road where a massive underground blast occurred in 2008. That blast loosed two boulders that landed on the Hot Springs Road.



POLITICAL UPDATES

Your NOG scored 100!

A note from Darlene Schanfald, NOG Clallam County Political Chair

All our endorsed candidates won and scored the highest. Dr. Sissi Bruch for Clallam County Commissioner District 3, State Representative Steve Tharinger, and US Congressman Derek Kilmer lead their competitors. Onward to the General Election!



JEFFERSON COUNTY ENDORSEMENTS

Kathleen Kler for County Commissioner

A number of important future environmental issues are facing Jefferson County: How to address the many environmental, health and safety issues associated with the proposed mega-resort development at Black Point and the

Pit to Pier gravel mining operation on Hood Canal; deciding what changes, if any, are needed to the County's Critical Areas Ordinance that protects our salmon streams; how to sensibly manage our water resources in light of future scarcity resulting from a reduced winter snowpack due to climate change; and how to ensure that land use decisions promote livable, walkable communities with good public transit access. Our discussion with Kathleen Kler convinced us that she not only understands these issues but also is highly motivated to work on finding solutions that address both the concerns of stakeholders while promoting environmental sustainability and the magnificent natural beauty of our region. Please vote for Kathleen Kler for Jefferson County Commissioner in the November general election. Ballots will be mailed October 17 and are due before the close of business on Election Day, November 4.

For further information on Kathleen Kler and how to support her campaign please go to:

<http://kathleenkler2014.com/>

Important Jefferson County PUD Commissioner Election — Both DeLeo and Collins are Excellent Candidates



The North Olympic Group has followed closely the race for Jefferson County PUD Commissioner, District 2. Recently, the PUD has assumed the role of an electric utility but has fallen far short of what citizens had hoped for when Jefferson County voted to establish its own public electric utility and to end its longstanding relationship with Puget Sound Energy (PSE). Since taking on the responsibility of a power utility, the PUD has sent hundreds of disconnect notices to lower-income citizens because it failed to continue the financial assistance programs PSE had in place for helping people pay their winter heating bills.

(Continued on Page 7)

POLITICAL UPDATES (Continued)

Additionally, the PUD is faced with the prospect of turning back hundreds of thousands of dollars earmarked for conservation by the Bonneville Power Administration because of a failure to publicize and aggressively market these programs. Finally, despite the fact that Jefferson County has one of the highest solar adoption rates in the state, the PUD has failed to make solar one of its priorities. This is particularly important in light of the fact that, depending on the year, from 10-20% of the PUDs electricity comes from nuclear and coal sources that need to be phased out. It's time for a change.

For these reasons we think it's time for new PUD leadership and encouraged you to support, in the primary, candidates who understood the significant role the PUD can play in developing a long-range strategy that emphasizes both affordable and environmentally sustainable energy for Jefferson County. Challengers—Tony DeLeo and Kenneth Collins—won the primary election and are now running in the general election. We felt both were worthy of your support then and continue to feel so now.

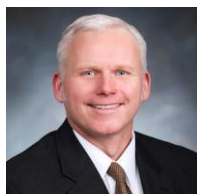
After interviewing the candidates multiple times, North Olympic Group is comfortable endorsing both of them. Both candidates understand the important role the PUD can play in advancing conservation and solar and in decreasing its reliance on nuclear. Additionally, both understand the many administrative and management challenges facing the PUD as it transitions from being just a small water utility to becoming the electric utility for Jefferson County.

Please go to the respective candidate websites to find out more information to help you in making an informed choice in this important race. Then please volunteer to help your candidate of choice win!

Kenneth Collins for PUD Commissioner, District 2: <http://kennethcollinspud.com/>

Tony DeLeo 4 PUD: <http://deleo4pud.blogspot.com/2014/07/vote-411-voter-guide-league-of-women.html>

Tony De Leo e-mail: deleo4PUD@gmail.com



Kevin Van De Wege: State Representative #1, District 24

Rep. Van De Wege has a strong environmental voting record which includes leading on the Neah Bay Rescue Tugs and banning flame retardants in commercial products, and serves on the House Leadership environmental group.

He was successful in having the 2013 State Legislature appropriate funds for air monitors in Port Angeles, Sequim and Port Townsend to measure ultrafine particles from biomass plants. Kevin co-sponsored legislation requiring oil companies to fully disclose the amount of oil entering our state, the route of oil trains, and other information on the movement of oil which our communities and first responders need to know. He supports renewable energy, funding for mass transit, bike, and pedestrian projects, making funds available for conservation priorities such as Puget Sound Cleanup and stormwater management, and wants to see more revenue for the Department of Ecology and Parks.

DON'T DIG IT!



DON'T RISK IT!

The City of Port Angeles wants you to purchase its sewage Sludge-based “*Garden Glory Compost*” it knows can be full of toxins and pathogens.

The City of Port Angeles is even offering you a discount!

But what's the costs of damaging your soil, contaminating your food and flower gardens, and exposing your family and pets to toxic “compost”? *No discount on these!*

Industrial sewage sludge-based “compost” can contain a complex mix of thousands of contaminants, including dioxins and pcbs, carcinogens and hormonal disruptors and pathogens. While legal to sell, safe is another matter.

The City's Wastewater Treatment Plant is an Industrial Plant and accepts not only human sewage, but wastes from multi-type businesses and industry.

- Sewage treatment plants are not designed to treat all that enters them
- Sewage treatment can actually create superbugs/antibiotic resistant genes and bacteria that can transfer to food
- Sewage treatment monitoring and testing is unavailable and unaffordable for most contents
- Sewage sludge-based compost/fertilizer labeling is not transparent and identifies few contaminants
- Sewage treatment contaminants are known to be taken up by crops and sea life humans eat
- Sewage treatment wastes can harm soils, air, water, wildlife, plants, food & human health
- Industrial sewage-based “treated” compost is toxic and, once land applied, can run off soil with stormwater adding to Puget Sound's pollution

Olympic Environmental Council and Northwest Toxic Communities Coalition are working for protection of natural resources and public health. This advertisement is funded by grants from the Horizons Foundation and the Rose Foundation.



UP AND DOWN HILL WITH THE NORTH OLYMPIC GROUP

Our erstwhile Outings Committee is currently working on a winter hikes schedule. Watch for future information on your opportunities to get outdoors.



MORE IMPORTANT ITEMS OF NOTE

SPECIAL FREE SCREENINGS



Olympic Climate Action will screen 350.org's newest film, **Disruption**, which weaves together political intrigue, science, and an insider's view of what's hoped to be the largest climate mobilization in history: the People's Climate March in New York City on Sept. 21 and solidarity actions being taken all around the world. The film features long-time climate activists Bill McKibben, Naomi Klein, and Van Jones along with some fresh and powerful new faces. The message: it's time to act. **Both screenings will be on September 7th at the Port Angeles Library at 5:30 pm and at the Quimper Universalist Unitarian Fellowship in Port Townsend. All are invited to both events.**

NOG SOCIAL EVENING

SAVE THE DATE - OCTOBER 2ND

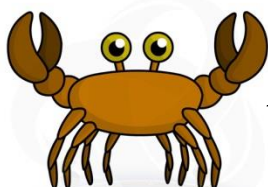


We are planning a NOG membership potluck at the United Methodist Church. Come and join us and enjoy a program featuring the "Eternal Battle - The Legacy of John Muir and the Wilderness Act at 50" by Ron Eber.

Ron Eber is Historian for the Oregon Chapter of the Sierra Club and has held many Sierra Club positions including National Campus Coordinator in 1971 and Chair and Wilderness Coordinator of the Oregon Chapter from 1980 -1985 during the intense campaign for the 1984 Oregon Wilderness Act. He has written and published two essays for the John Muir Center in California entitled "John Muir and the Pioneer Conservationists of the Pacific Northwest" and "Wealth and Beauty - John Muir and Forest Conservation."

Members and friends of the Sierra Club are invited. **An invitation and additional information is forthcoming.**

As always we can use volunteers to help with set-up, serving and clean up. If you are willing to help please contact Janet Marx at janetmarx_76@msn.com or 360-457-6605



October 11 and 12 is Port Angeles Crab Fest Time

Once again we will participate in the fest. **Volunteers will be needed** to help man the North Olympic Group booth. If you can contribute a few hours please contact Bob Sextro at robert.sextro@noblis.com



More Important Items of Note *(continued)*



Sewage sludge used in east King County forest

You Have Two Opportunities

to attend a film and discussion about sewage sludge-based compost :

Thursday, September 25th, 6:30 PM at the Port Angeles Senior Center, Meeting Room

Thursday, October 16th, 6:00 PM at the Sequim Library meeting room



The Clallam County WSU Extension Farm Tour

is Saturday, October 4th. The theme of this year's farm tour is "*Farming for Our Future*," featuring local farm tours, educational activities, demonstrations or displays highlighting a number of future farming issues, including conservation of farmland, climate change adaptation, and next generation farmers and technologies.

Olympic Climate Action is sponsoring a presentation by Laura Lewis, Director of WSU Jefferson County Extension. Her lecture will outline the processes associated with geographic range shifts due to climate change and how plants and animals of agricultural significance will be impacted, with specific focus on Pacific Northwest agricultural production systems.

As the date gets closer watch for more details at <http://olyclimate.org/>



With every drop of water you drink, every breath you take, you're connected to the sea. No matter where on Earth you live.

Sylvia Earle, Oceanographer