



BROWARD SIERRA NEWS



Please Recycle

VOL. XXXX NO. 8 / AUGUST 2018

Graphic design & layout by www.carolewalsh.com

www.sierraclub.org/florida/broward • www.facebook.com/BrowardSierra • www.groups.yahoo.com/group/BrowardSierra

THE EVILS OF MEAT – By Max Goldstien, Broward Sierra Excom Member and Treasurer

I will be talking about the environmental impact of meat on our planet at our August picnic. There's a lot of reading material if you have the time, but here I'll just give some statistics:

Scientists agree Earth's temperature is rising from a host of human activities. Fossil fuels emit roughly three-quarters of global heat-trapping gases. Beef, responsible for roughly 6% of greenhouse gas emissions, is the single biggest food factor when it comes to climate change, according to a 2013 United Nations report www.ipcc.ch/report/ar5/wg1/.

According to the Food and Agricultural Organization, livestock was estimated to contribute to 14.5 percent of global human-caused greenhouse gas emissions (GHG). In the U.S., the Environmental Protection Agency estimates that livestock contributes to more than one-third of methane emissions, one type of GHG. Eating less meat by going meatless one day a week can contribute to efforts to reduce GHG.

The two biggest drivers of beef's climate footprint, per that report:

- Cows emit methane (23 times more powerful a greenhouse gas than carbon dioxide), a potent greenhouse gas, when

they burp and, to a much lesser extent, pass gas. This accounts for nearly half of beef's greenhouse gas emissions.

- Feed and land use: This includes cattle manure that emits a greenhouse gas called nitrous oxide (a staggering 190 times more powerful a greenhouse gas than carbon dioxide), how cattle graze on pastures, and deforestation (particularly in Brazil).

The U.S. Environmental Protection Agency has cited an increased numbers of birds raised for eggs and meat and the escalating confinement of pigs and dairy cows as catalysts for rising emissions of powerful greenhouse gases.

www.fao.org/docrep/010/a0701e/a0701e.pdf

The meat industry has a record of egregious water pollution. Because animals are so densely packed at today's industrial farms, they produce more manure than can be absorbed by the land as fertilizer. In fact, animal excrement and other agricultural runoff from large-scale farms have polluted nearly one-third of rivers in the U.S.



In many places, animals raised for food are depleting topsoil and destroying

Continued on next page

BROWARD SIERRA CLUB HELPING TO CONNECT HABITATS

– By Sue Caruso, Broward Sierra Excom Member

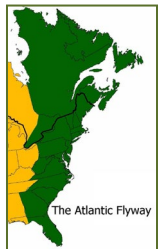


As more and more human development covers the landscape of Broward County, it gets harder

to imagine how all the native fauna can find a way to survive the noise, traffic, and loss of habitat. Protecting, maintaining and restoring such habitats is a challenge for environmental groups across this county. Luckily, Naturescape Broward (the organization responsible for Water Matters Day) has initiated the Broward Habitat Connectivity Project, in conjunction with the National Wildlife Federation. The goal of this project is to "improve and conserve important stop-over habitat for migrating

songbirds along the Atlantic migratory flyway through Broward County, focusing on urban areas and other landscapes where there is limited quality habitat."

Of course, aiming at improving the bird habitats has an added advantage for all species, even at ground level. A study in Cook County, IL, found that "streets with bird-friendly yards had almost twice as many species as those without." Also, since Broward County is an important part of the Atlantic migratory flyway, this approach will have profound affects on bird populations throughout America.



For this project, using a multi-step approach is helpful:

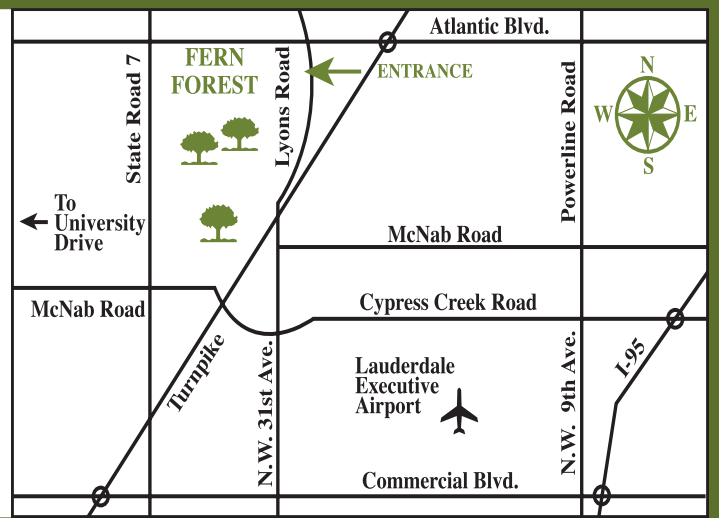
Continued on next page



Broward Sierra Club's General Meetings - The first Thursday of each month we have committee reports and an educational program on conservation or environmental issues.

DIRECTIONS: Fern Forest Nature Center, 201 Lyons Road South, in Coconut Creek is just south of Atlantic Blvd. on the west side of the street. (From the south, NW 31 Ave. becomes NW 46 Ave., and then Lyons Rd. as you pass under the turnpike.) Committee reports begin at 7:30, and the program follows. The meeting is open to the public at no charge.

Thursday, August 19th: There will be no General Meeting on Thursday August 2nd. Instead we will be having our annual Picnic on the Beach on Sunday, August 19th at Dr. Von Mizell-Eula Johnson State Park (formerly John U. Lloyd Park) in Dania. (See last page.)



LOCAL SIERRA CLUB OUTINGS AND EVENTS

To preserve a place, you must believe in it. To believe in it, you must see it.



SEP 8, SAT. PEOPLES CLIMATE MOVEMENT MARCH after months of organizing and movement-building, the Peoples Climate Movement will move tens of thousands of people across the country into action, joining partners from around the world, to show our elected leaders that we demand action on climate change. Eight weeks later, millions more will take those demands to the polls, making Climate, Jobs, and Justice central issues in the mid-term elections and beyond. To learn more and sign up, go to <https://peoplesclimate.org/>

Evils of Meat, continued from previous page

natural vegetation, including important habitats, at an alarming rate. This poses a serious problem for wildlife, including species already threatened or endangered. According to the Center for Biological Diversity, reducing meat consumption is one of the best ways to save endangered species.

The amount of water both consumed directly by farmed animals and used to grow crops to feed them makes animal agriculture an incredibly thirsty industry. Animal agriculture uses a whopping 56 percent of the water in the U.S. In fact, just one hamburger requires 660 gallons of water to produce – the equivalent of two months' worth of showers.

Raising animals for food (including land for grazing and growing feed crops) now uses over one-third of Earth's landmass, with animal agriculture culpable for nearly 91 percent of Amazon rainforest destruction, according to the World Bank.



As you may have heard, we are having an algae problem in South Florida. A lot of this is phosphorus and nitrogen run-off from farm fields.

Waste from humans goes through a sewage treatment plant (before the affluent is pumped out into the oceans). As for the waste from animals, have you ever considered all the manure produced by livestock? The Environmental Protection Agency estimates that roughly 335 million tons of manure is produced by livestock in the United States each year. And if a farm doesn't have a treatment system in place to handle that waste, the nutrients from this manure can end up in ground water or surface water, only to flow into and accumulate in a lake or ocean. That is a ton of extra nutrients in the water! Actually, that's 335 million tons of extra nutrients.

In addition to the environmental impact, most animals are crammed into Confined Animal Feeding Operations (CAFOs) where they are literally imprisoned and tortured in unhealthy, unsanitary and unconscionably cruel conditions. In these conditions, they have to be fed antibiotics to prevent infection, or the spreading of infection.

Manure from industrial agriculture is the primary source of nitrogen and phosphorus in waterways. Much of the nitrates devastating the Mississippi river are coming from Iowa, a state with well over 14,000 CAFOs. And where does the Mississippi River drain into? The Gulf of Mexico, which has one of the largest dead zones in the world (areas of low to no oxygen that can kill fish and other marine life).



So, cut down on the animal products and save rainforests, save animals, and help save yourself

<https://tinyurl.com/MeatDairyClimate>

Connecting Habitats, continued from previous page

1) Engaging the broader community through education and outreach: Naturescape Broward provides educational materials on many topics from the best native plants for your yard to water conservation tips, so that anyone can learn how to create their own naturescape. You can learn how to care for your trees to make them more resilient to tropical storms and hurricanes. The organization also hosts the National Wildlife Federation Habitat Steward training for county and municipal staff and residents every January. Speakers are also available for schools and community organizations.

2) Planting trees and creating wildlife habitat gardens at nearby homes:

Naturescape Broward is devoted to teaching people about native landscaping that will make the most of backyards, schoolyards and even pots on porches. You can learn how to make your home a Habitat Certified home that will help connect wildlife habitats throughout neighborhoods and cities. There are currently 4,305 certified yards in Broward County. There are 23 cities within the county that are certified or are registered and working on certification. Broward County is the first county in the nation to become certified as a Community Wildlife Habitat. Along with community partners National Wildlife Federation and the Youth Environmental Alliance, Naturescape Broward is installing 100 pollinator gardens in Broward County.

But, there is more to be done.

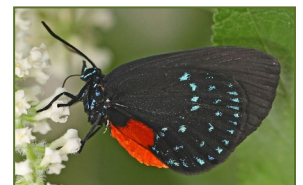
3) Expanding and creating tracts of wooded habitat in areas of the county that lack tree canopy:

Naturescape Broward has identified low-canopy areas of Broward County and has worked to get partners and grant dollars to fill in these areas of "habitat deserts" with large, native canopy trees, as well as understory plants. Three cities were targeted last year and there are two more targeted for this year.

This is where the Broward Sierra Club is participating in the program. Since less money is available for the connectivity project this year, we will be purchasing several large canopy trees and understory plants to help Naturescape Broward fill in the low canopy areas targeted for this year. These trees not only provide habitat, but also provide shade, help clean air and water, reduce flooding and erosion, and much more. These sustainable habitats are a big step to achieving a higher quality of life in Broward County.

What you can do:

Visit Broward.org/Naturescape to learn more about native plants that can act as urban wildlife habitats and plant some in your yard or decorative pots; remove as many invasive plants as you can, since these interfere with healthy ecosystems. (I am at this stage... one of my plants attracted a critically endangered Atala butterfly); certify your yard as a Naturescape Broward landscape; when details are set, volunteer to plant the understory plants at the chosen location.





HAVE FUN AT THE BEACH!

Broward Sierra Club's Annual Summer Picnic at the Beach

Vegetarians and non-vegetarians welcome

Sunday, August 19th, starting at noon

Dr. Von Mizell-Eula Johnson State Park (formerly John U. Lloyd Park), 6503 N. Ocean Drive (A1A), Dania Beach

→ **We're at the Pelican Pavilion.** ←

Come have fun and enjoy the food, beach, swimming, snorkeling, and just plain lounging and socializing with other environmentally-minded folks.

This yearly fundraising event helps support the Broward Sierra group's activities and environmental causes. There will be some food and drinks supplied, but please bring a dish or beverage to be shared. Please also bring a contribution of \$5 if you bring a dish or \$10 if you don't. Bring your own recyclable plates and utensils, in order for us to leave "nothing but our footsteps" behind, and set an environmentalists' example. Adults & kids welcome. (There is a \$4 entrance fee at the park, per car with 1 person, \$6 fee for 2-8 people in a car, or \$2 each for pedestrians, bicyclists or more than 8 people in a car.) So please **carpool** if you can and bring **exact change** for the gate.

For more info see our Meet-up group at

www.meetup.com/Broward-County-Sierra-Club-Group,

or contact Max at maxgold@yahoo.com, 954-296-3411.

And so we can make sure we have enough food for everyone, RSVP Max or via the Meet-Up Group.



**SIERRA
CLUB**