



Graphic design & layout by [www.carolewalsh.com](http://www.carolewalsh.com)

Printing by The Press Room

3721 SW 47 Ave. #301, Ft. Lauderdale, FL 33314

(954) 792-6729 • [www.thepressroom.net](http://www.thepressroom.net)



Recycled paper



We hope you enjoy our newsletter. Why not join us right now? Come along on an outing. Get involved, learn about local environmental issues and how they affect you and your community. Just use the form on the back page, or go to our website at <http://florida.sierraclub.org/broward>, and click on the "Become a member" link.

## NOTES FROM THE CONSERVATION COMMITTEE

– By Hawk Arachy, Broward Sierra Conservation Committee Vice-Chair

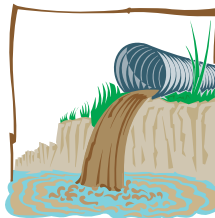
The Conservation Committee of the Broward Sierra Group has been working on two marine issues. We have addressed the A1A reconstruction and the negative longitudinal effects on our marine environment and communities in the area.



The Conservation Committee believes that an active and strong coastal management system needs to be implemented, with a focus toward biological, hydrological, and ecological goals when reconstructing the A1A area. The City should take into account the requirements of all species which inhabit the area and proceed in a way that protects the marine and estuarine habitats of the City's coastline. We strongly suggested to the City of Fort Lauderdale to reconstruct the historic beach dune system with a natural green zone consisting of native vegetation to act as a buffer between the beach and A1A. By doing so, the City will help prevent future collapses of A1A from storm surges and will promote community sustainability by protecting and preserving the natural environment. If you feel the same way let the City know at: [www.restorea1a.com/ideas?page=1&product=restoring+A1A](http://www.restorea1a.com/ideas?page=1&product=restoring+A1A).

Our second endeavor was supporting NOAA's decision to change the status of elkhorn and staghorn coral to an endangered status. We supported the listing for the following reasons:

- Two sewage outflow pipes in Broward County discharge untreated pharmaceuticals, antibacterial soap residues, household chemicals, water leached from landfills, along with partially treated sewage in the ocean in proximity to the corals;
- Corals are exposed to high levels of nitrogen and phosphorus from water exiting the Port Everglades Inlet. These nutrients have a detrimental effect on corals;
- Runoff from our urban roads and highways carries hazardous materials and carcinogens produced by automotive and diesel exhaust into the ocean



*Continued on page 4*

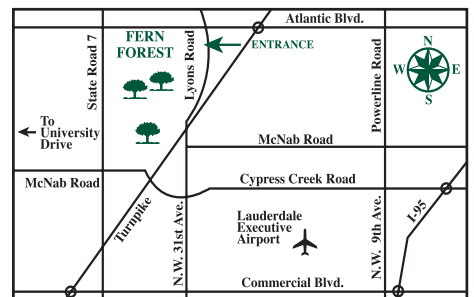
**Broward Sierra Club's General Meetings** are held at 7:30 pm on the first Thursday of each month at the Fern Forest Nature Center. Each month we have an educational program on conservation or ecological issues.

**DIRECTIONS:** The Fern Forest Nature Center, 201 Lyons Road South, Coconut Creek, just south of Atlantic Blvd. on the west side of the street. (From the south, NW 31 Ave. becomes NW 46 Ave., and then Lyons Rd. as you pass under the turnpike.) Committee reports begin at 7:30, and the program begins at 8:00. The meeting is open to the public at no charge.

**Thursday, Apr. 4: Professor Charlotte Maloney** of Florida Atlantic University & Palm Beach State College will give a photographic and video presentation and discuss **Landscape Photography Techniques**.



**Thursday, May 2: Dr. Keren Bolter** of Florida Atlantic University will be discussing the adverse effects of **Climate Change and Sea Level Rise** on Broward County and its shoreline.





## The Broward Sierra Club Leaders

### Executive Committee Chair

Tanya Tweeton 954-472-3704  
tweeton204@yahoo.com

### Vice Chair / Education & Recycling

Ina Oost Topper 954-722-9944  
irtopper2000@cs.com

### Treasurer

Max Goldstein 954-296-3411  
maxgold@yahoo.com

### Secretary

Sue Caruso 954-684-6747  
susan.caruso@att.net

### Conservation Chair

Matthew Schwartz 954-634-7173  
matthew3222@yahoo.com

### Conservation Vice-Chair

Hawk Arachy  
climateresearch@live.com

### Legal Chair

Mara Shlackman 954-523-1131  
marashi@hotmail.com

### Membership Chair

Art Joseph 954-472-0649  
rogerwilcotj@bellsouth.net

### Volunteer Coordinator

Tanya Tweeton 954-472-3704  
tweeton204@yahoo.com

### Newsletter Editor & Web Master

Carole Walsh 954-987-3642  
carolewalshgraphics@gmail.com

### Outings Chair

Judy Kuchta 305-308-8913  
judykuchta@yahoo.com

### Political Chair

Brion Blackwelder 954-262-6135  
blackwelderb@nsu.law.nova.edu

### Program Chair

Stanley Pannaman 954-720-4639  
s\_pannaman@yahoo.com

### Transportation and CWA Liaison

Barbara Ruge 954-328-2165  
b-realtor@att.net

### Executive Committee Meetings

are held on the first Tuesday of each month. Contact Tanya Tweeton at 954-472-3704 or tweeton204@yahoo.com for time and location.

### Membership Corrections -

To expedite any membership change (new addresses, etc.) or problems with your membership records please send your name, member number, old and new address or problem to: **Member Services**, 85 Second Street, San Francisco, CA 94105-3441. Phone 415-977-5653 or e-mail: <address.changes@sierraclub.org> or <membership.services@sierraclub.org>

The **Broward Sierra News** is available every other month in electronic format. Additionally, to keep you apprised of current Broward Sierra Club events, they will be listed on our website: <http://florida.sierraclub.org/broward>. If you would like to receive reminders of these events e-mailed to you, you will need to **subscribe to our Yahoo newsgroup**. The address is: <http://groups.yahoo.com/group/BrowardSierra>. Simply click on the blue "Join this Group" icon and follow the instructions. You may have to create a Yahoo ID first, which is easy and free. This will also allow you to sign up for any of the other numerous Yahoo groups.

## WATER MATTERS

– By Ina Oost Topper, Broward Sierra Vice Chair / Education & Recycling Chair



By the time this newsletter was going into production, this year's "Water Matters Day" at Tree Tops Park had come and gone. We were all very pleased to see that the Water Matters Day was a great success again this year.

Thank you all for heeding the call and coming! Last year's Water Matters Day was also very successful, with, from what we've been told, well over 3000 people in attendance. And, from what we're hearing now, this year's attendance was at least as much, if not more.

The subject of water is being widely discussed these days, not just in environmental publications such as this one, but also in the daily newspapers, magazines, television, etc. This most vital, all encompassing element on our planet – without which life would simply not exist – has become a more important focus of environmentalism in general. Increasingly we're made aware of distinct water matters we had never heard of before, and couldn't even think of.

We talked earlier about water conservation, now let's discuss water pollution. For instance, in an environmental Time magazine article this past year, titled 'A River Runs Through It' attention was drawn to the fact that WHATEVER we flush down our toilet or pour down the drain will eventually show up in our rivers, oceans and, alas, even in our drinking water. Who would have ever thought that sizeable quantities of insect repellents, prescription drugs and antibiotics would be detected in sampled water

from many different sources. Aaayyee! After we thought we did the right thing by NOT dumping our excess medication in the garbage bin, in order to not poison the landfill, we probably did worse by flushing it down the toilet. What's more baffling, as mentioned in the Time Magazine article, is that in over 70% of water samples, caffeine was present in not small quantities. (Come to think of it, why not make smaller pots of coffee in the mornings, saving money as well as water.)

And what about hormone residues? We prohibited our farmers from injecting livestock with growth hormones for the purpose of speeding up their growth for quicker marketability, and... voila! Reproductive hormones (probably from flushed birth control pills) are now found in 40% of overall water samples.

Attention environmentalists; please reconsider using fertilizers, pesticides and weed killers (which seep into the water supply) on your lawn this coming spring. Landscapers say that, given the right amount of watering and some extra TLC, no large-scale weed killers or extensive use of fertilizers are needed. Could we, perhaps, just manually pull some weeds out of our lawn, when walking outside? Yes, it is a bit of extra work. But just think how exhausting it would be, in maybe the not too distant future, when all our drinking water will have to be carried home in containers, because our faucets supply a liquid so poisoned and polluted (and you know this is already the case already in some areas) that it's only good for taking showers or scrubbing floors!

## WE'RE ALL OVER THE WEB

In addition to our Broward Sierra Club website ([www.florida.sierraclub.org/broward/](http://www.florida.sierraclub.org/broward/)) and our Broward Sierra Club Yahoo group ([www.groups.yahoo.com/group/BrowardSierra](http://www.groups.yahoo.com/group/BrowardSierra)), we now also have a **Facebook page** (at [www.facebook.com/BrowardSierra](http://www.facebook.com/BrowardSierra)) and **Twitter feed** (at [twitter.com/BrowardGroup](http://twitter.com/BrowardGroup))! We will keep you updated on local and worldwide environmental issues, as well as upcoming outings, events and meetings. We look forward to having you look, join, like and follow us.

## GREEN STREETS

Sierra Club members and all environmentalists interested in Broward County transportation plans and "Green Streets" initiatives, the MPO-CIR (Community Involvement Roundtable) meets on the Fourth Wednesday of each month from 6 to 8 pm at the Broward MPO offices, in the Trade Centre South, 100 West Cypress Creek Road, Suite 850, Fort Lauderdale. Public input is welcomed. Contact Barbara Ruge 954-328-2165 for more information.

# Local Sierra Club Outings & Events *To preserve a place, you must believe in it. To believe in it, you must see it.*



**MAR 23, SAT. FERN FOREST NATURE CENTER COMMUNITY SERVICE PROJECT.** We'll be giving back to the park, as they so kindly allow us to hold our monthly general meetings at this urban forest treasure. This is an opportunity to learn about some of the challenges of maintaining and upgrading a natural area. No experience or tools necessary. Bring a hat, water, sunscreen and substantial footwear and clothing for working outdoors in the brush. Meet downstairs at the nature center at 9am and we'll be out by lunch time. *Free.* Leader: Jackie Fisher 954-434-2855 <jsf812@bellsouth.net>.



**APR. 6, SAT. FERN FOREST NATURE CENTER COMMUNITY SERVICE PROJECT.** If you missed the clean-up day on March 23rd, you have another chance to get out to enjoy and help maintain this beautiful urban forest. We'll be giving back to the park, as they so kindly allow us to hold our monthly general meetings there. No experience or tools necessary. Bring a hat, water, sunscreen and substantial footwear and clothing for working outdoors in the brush. Meet downstairs at the nature center at 9am and we'll be out by lunch time. *Free.* Leader: Judy Kuchta 305-308-8913 <judykuchta@yahoo.com>.



**APR. 6, SAT. CANOE TRIP ON HALFWAY CREEK (OR TURNER RIVER).** Explore the hidden world of mangrove tunnels. 7 hours round trip. Bring your own water and lunch (we'll have a lunch-break in our canoes). A park ranger will accompany us as a guide. Rating: moderate to strenuous. *Suggested donation: \$10.* Leader: Kaatje Bernabei 305-223-6551 or 305-298-0277 <kaatjebnabei@bellsouth.net>, Asst. Leader: Alan Nowell 305-253-4250 <mrhitnmiss@aol.com>.



**APR. 14, SUN. KAYAK/CANOE THE SOUTH FORK OF THE ST. LUCIE RIVER NEAR STUART.** (9:30 am) This beautiful, pristine stream near Stuart becomes increasingly scenic and narrow as we paddle. We'll stop at a remote picnic site and then paddle back to the starting point. This trip is in very gentle water suitable for beginners. Bring your own kayak or canoe or rent in advance from South River Outfitters 772-223-1500 [www.southernriveroutfitters.com](http://www.southernriveroutfitters.com). \$26 for a single kayak, \$36 for a double kayak or canoe, \$5 launch fee if you have your own boat. Limit 20. Rated moderate. *Suggested donation: \$3 members, \$5 non-members.* Leader: Chas Hunt 561-967-4770 <loxoutings@comcast.net>.



**APR. 15 - 18, MON. - THURS. THE 3RD ANNUAL EARTH WEEK STUDENT SYMPOSIUM** will be held at the Broward College South Campus from 10 am - 2 pm. On Tuesday, April 16th, the Broward Sierra Club will have an exhibit to introduce the students to the various ways they can contribute to being champions for our environment. Since the Sierra Club has a comprehensive list of issues/activities presented to the legislature and the community, we will have an update on these issues at our table At 11:00 am on April 15, Broward Sierra's Phil Busey will be the main speaker at the opening ceremonies, which is open to the public.



**APR. 20, SAT. BAYNANZA 2013 AT MATHESON HAMMOCK.** Clean-up coastal area, mangroves from 9-12, then picnic and swim at Matheson Hammock, Old Cutler Rd, Miami. Rating: easy to moderate. Leader: Kaatje Bernabei 305-223-6551 or 305-298-0277 <kaatjebnabei@bellsouth.net>, Asst. Leader: TBA.



**APR. 21, SUN. WEST LAKE KAYAK.** West Lake /Anne Kolb nature center is an excellent place for kayaking. We'll paddle through mangrove trails and some open water. Learn and be inspired by what environmentalist Anne Kolb did to preserve this natural resource from development. Rated moderate. Kayak rental at the concession is \$29.00 for 4 hours. *Suggested donation to the club is \$5,* and we'll have some healthy snacks afterwards. Leader: Judy Kuchta 305-308-8913 <judykuchta@yahoo.com>.



**APR. 20 - 21, SAT. - SUN. EARTH DAY AT THE MUSEUM OF DISCOVERY AND SCIENCE IN FT. LAUDERDALE.** Help make our world a better planet for everyone by becoming more eco-friendly. Learn how bio-foam peanuts can change the future of waste, test your knowledge by grouping animals based on the ecosystem, and see how pollution can affect what we eat. Stop by the Sierra Club table and say hi.

**Become an Outing Leader.** Outing Leaders get involved, get active, meet new people, have fun, and attend their outings for free. (Assistant Leaders attend for half price.) If you are interested, contact Judy at 305-308-8913 or <judykuchta@yahoo.com>.

We would like to invite you to come on one of our fun and educational outings! If you have any questions about an outing, please check with the certified Sierra Outing Leader listed for the outing. Some of the outings need no experience; others require some level of proficiency. All participants are required to sign a standard liability waiver. If you would like to read the Liability Waiver before you choose to participate in an outing, contact the leader of the outing or go to <[www.sierraclub.org/outings/chapter/forms](http://www.sierraclub.org/outings/chapter/forms)>.

Florida Seller of Travel Ref. No. ST37115

Unless otherwise stated, the costs for each outing represent a best estimate of actual shared expenses, for food and transportation and other direct expenses.

**For sign-up, payment and further information, please contact the outing leader.**

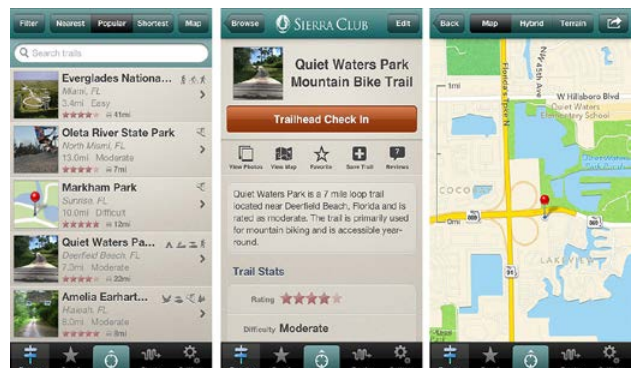
**LOOK FOR UPDATED INFORMATION ON OUR WEBSITE: <http://florida.sierraclub.org/broward>**

## SIERRA CLUB HIKING APP FOR YOUR IPHONE

Sierra Club Trail Explorer is a great app to help you explore and enjoy the wilderness in your own backyard and across the country.

Download the app today to find, record, and share new adventures.

- Browse and share over 40,000 trails across North America.
- Search trails by name, activity, length, and location.
- Track routes, view live stats, and take geo-tagged photos using the iPhone GPS.
- Add new trails, write reviews, and submit routes and photos of your adventures.
- Access trails offline (save a trail to download its maps, photos, and reviews).
- Sync your saved trails and GPS tracks with your account on [www.AllTrails.com](http://www.AllTrails.com).



**DID YOU KNOW?** – By Lindsay Taylor

Did you know that you can **recycle rechargeable batteries, cell phones, CFL light bulbs and plastic bags** at any Lowe's or Home Depot store? The recycling containers are located right at the entrance of the stores. You can also use Broward County's ARC program to recycle electronics, such as old TV's, computers, VCR's, etc. The website for this FREE service is [www.arcbrowarderecycling.com](http://www.arcbrowarderecycling.com).



Conservation Committee, continued from page 1

from our canal drainage systems. These materials, which include mercury, lead, arsenic, magnesium, and cadmium, are killing the coral reef systems;



- Human activity such as bathing in our oceans also threatens the corals from the introduction of chemicals found in sun block;
- Because of the lack of mooring buoys, corals are being physically damaged from anchoring and grounding of small and large vessels which are numerous in Broward County;
- Coral reefs are essential to the survival of tropical marine ecosystems. Their ecological services include protecting the area from sea level rise and coastal erosion due to anthropocentric activity. The anomalies of weather are causing intense storms to break on the shores of South Florida. Coral reefs are natural barriers against the flux of energy from storm surges. Coral reefs dissipate wave energy and high surf. According to the Intergovernmental Panel on Climate Change, the coastal ecosystem of Florida protects it from storm surges, flooding and rising sea levels;
- The biome supports Florida's socio-economic development. The ecosystem provides a source of food, breeding grounds and nurseries for many sport fishes and shellfishes. Corals have high value to fishery resources and eco-tourism - including Broward County's important recreational diving industry. They provide ecological services to fisheries, shoreline protection and tourism.

**TRI-RAIL EXPANDS WEEKEND SCHEDULE**

Expanded Tri-Rail service on the weekends (16 trains have been expanded to 30 trains) began on March 2, for more information visit [www.tri-rail.com/service-updates/tri-rail-expanded-weekend-schedule-change](http://www.tri-rail.com/service-updates/tri-rail-expanded-weekend-schedule-change), and to see the new schedule, go to [www.tri-rail.com/pdf/TrainSchedule\\_Horizontal\\_v2.pdf](http://www.tri-rail.com/pdf/TrainSchedule_Horizontal_v2.pdf).



Make your voice heard! Leave a comment at: [www.regulations.gov/#!documentDetail;D=NOAA-NMFS-2010-0036-0469](http://www.regulations.gov/#!documentDetail;D=NOAA-NMFS-2010-0036-0469)

Find out about **Florida's Water and Land Legacy** campaign at [www.floridawaterlandlegacy.org/](http://www.floridawaterlandlegacy.org/).

**DONATE TO PROTECT THE FLORIDA PANTHER**

You can help protect the Florida Panther and wilderness through litigation and education. This is fund of The Sierra Club Foundation created by your Broward Group. Your tax-deductible gift will support our lawsuit challenging the National Park Service plan to put 130 miles of off-road vehicle (ORV) trails in Big Cypress National Preserve, habitat of the Florida Panther.



Please make your check payable to:  
The Sierra Club Foundation  
In the notes, write "for Florida Panther"  
Mail your donation to:  
Broward Sierra, P.O. Box 550561, Davie, FL 33355

**LEAVE A GIFT TO THE ENVIRONMENT**

Doing your Estate Planning now? Or thinking about it? Please remember the environment in your planning wishes. For more information on estate planning to include the Sierra Club, please go to [www.sierraclub.org/giftplanning](http://www.sierraclub.org/giftplanning).



Ansel Adams

**Most people don't know that Ansel Adams was a member of the Sierra Club for over 50 years. He didn't just photograph the wilderness. He fought for it.**

Shouldn't your grandchildren have more than photos to remind them of the grandeur of our land? The Sierra Club is dedicated to protecting our wilderness for generations to come. Join us. You'll be in good company.

**Join the Sierra Club and receive a FREE Sierra Club Weekender Bag!** (While supplies last)



**Yes**, I want to join the Sierra Club! I want to help safeguard our nation's precious natural heritage and receive a free Sierra Club Weekender Bag. My payment is enclosed.

Name \_\_\_\_\_

Address \_\_\_\_\_

City \_\_\_\_\_ State \_\_\_\_\_ Zip \_\_\_\_\_

Phone (optional) (\_\_\_\_) \_\_\_\_\_

E-mail (optional) \_\_\_\_\_

Check enclosed, payable to Sierra Club  Mastercard  Visa  AmEx

Cardholder Name \_\_\_\_\_

Card Number \_\_\_\_\_ Exp. Date \_\_\_\_/\_\_\_\_

Contributions, gifts or dues to the Sierra Club are not tax deductible; they support our effective, citizen-based advocacy and lobbying efforts. Your dues include \$7.50 for a subscription to *Sierra* magazine and \$1.00 for your Chapter newsletter.

**Membership Categories**



	INDIVIDUAL	JOINT		INDIVIDUAL	JOINT
Introductory	<input type="checkbox"/> \$25		Life	<input type="checkbox"/> \$1000	<input type="checkbox"/> \$1250
Standard	<input type="checkbox"/> \$39	<input type="checkbox"/> \$49	Senior	<input type="checkbox"/> \$25	<input type="checkbox"/> \$35
Supporting	<input type="checkbox"/> \$75	<input type="checkbox"/> \$100	Student	<input type="checkbox"/> \$25	<input type="checkbox"/> \$35
Contributing	<input type="checkbox"/> \$150	<input type="checkbox"/> \$175	Limited Income	<input type="checkbox"/> \$25	<input type="checkbox"/> \$35

F94Q

W3302

Enclose check and mail to: **Sierra Club**  
P.O. Box 421041, Palm Coast, FL 32142-1041