

CONSERVATION NOTES *By George Cavros, Conservation Chair*

Sierra Scores Big Conservation Victory

The Sierra Club's Florida chapter scored a big victory towards preserving Florida's environmental heritage, at the same time it was being assailed by the Miami Herald, Governor Bush, and some conservation groups.

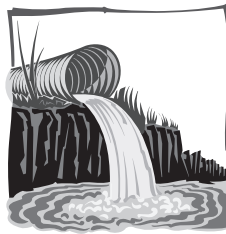
Sierra Club filed suit over a state-brokered deal between developer Syd Kitson and several Southwest Florida counties to preserve a majority of Babcock Ranch, a pristine tract of land reminiscent of "old Florida." While the deal seemed good enough for most folks, the Sierra Club concluded that it was too heavily weighted towards the developer and violated local land use laws.

Last month, Kitson settled with Sierra by agreeing to cluster the development in one area – sparing an additional 2,000 acres from bulldozers, and creating a large wildlife corridor for endangered species such as the Florida panther. Moreover, the settlement included limits on pesticide and fertilizer use, thereby protecting the local watershed

from pollution, and even included green building standards that will conserve valuable energy.

Sierra negotiated a much improved agreement over the previously brokered deal. It was a well-crafted conservation compromise that will better preserve and protect one of our last remaining pristine lands for future generations.

This is why the Sierra Club is the largest and most effective environmental advocacy group in the state. Congratulations to the club!!



South Florida's Dirty Little Secret

The growing number of news reports and studies released recently are shedding light on one of Southeast Florida's dirtiest little secrets: unlike the rest of the state, we dump much of our wastewater (partially treated sewage) offshore through giant pipes called ocean outfalls.

"It's ironic that a place built on the good fortune of its coastline would treat it like a cesspool, but that has been the practice for the last few decades in Miami-Dade, Broward and Palm Beach Counties, which have two ocean outfalls apiece," opined Jim Harper in recent story in the Biscayne Boulevard Times.

Every day these six pipes send close to 400 million gallons of partially treated wastewater into the sea. The discharges send out nutrients that create algae blooms that smother and kill coral reefs, which are critical ecological gems and a local economic asset.

A new report by the University of Florida on South Florida's six outfalls lays out their current status and sounds the call for alternatives. The leading alternative is to reuse as much water as possible. It is both environmentally responsible and relatively affordable for our counties, according to the report's projections.

continued on page 3

Broward Sierra Programs

September 5th: Everglades Photography Slide Show and Talk by Brian Call.

Brian Call, a self-taught fine art nature photographer, realized early on in his life that he shared a strong connection with nature. Since moving to South Florida in 1991, Brian has been artistically documenting the flora and fauna of the Everglades, Big Cypress National Preserve, Biscayne National Park, Fakahatchee Strand State Park, and various ecosystems of the region. He has also been very active with efforts to save the Florida panther and involved with other environmental issues

Photos © Brian F. Call Photography
www.briancallphoto.com



concerning the protection of wilderness habitats throughout the region. Through his nature photography, Brian's goal has not only been for his images to inspire people to connect with the very special natural areas here in South Florida, but also to inspire people to connect with, preserve, and protect natural areas in their own localities. Brian was also recently featured on a PBS program on the Florida panther.

Because of the election, this month only, we will meet in the Exhibit Hall rather than in the Mangrove Hall at Anne Kolb Nature Center in Hollywood. Take I-95 to the Sheridan Street exit, head East past U.S. 1, over the bridge, and on the left within 1/2 mile, look for the lighted Anne Kolb sign. If you go over the Intracoastal, you missed it. Doors open at 7:00 PM. Committee reports begin at 7:30 and the program begins at 8:00. The meeting is open to the public at no charge. For more information contact Harold Hancock at 561-417-0216.

Graphic design & layout by carolewalsh@mindspring.com
Printing by The Press Room
4111 SW 47 Ave. #309, Ft. Lauderdale, FL 33314
(954) 792-6729 • www.thepressroom.net



Recycled paper, soy ink

Sierra Hotline  **954-567-2841**

for Hotline additions, call Harold @ 561-417-0216

SIERRA CLUB / BROWARD COUNTY

P.O. Box 350432
Ft. Lauderdale, FL 33335

NON-PROFIT ORG.
U.S. POSTAGE PAID
FT. LAUDERDALE, FL
PERMIT NO. 4189

We hope you enjoy our newsletter. Why not join us right now? Come along on an outing. Get involved, learn about local issues and how they affect you and your community. Just use the membership form on the back cover.



The Broward Sierra Club Leaders

Executive Committee Chair
Harold Hancock 561-417-0216

Secretary
Louis Serra 954-442-0880

Treasurer
Max Goldstein 954-296-3411

Conservation Chair
George Cavros 954-295-5714

Marine Issues / Energy Issues Chair
Pedro Monteiro 954-525-3324

Political Chair
Matthew Schwartz 954-764-2739

Legal Chair
Mara Shlackman 954-523-1131

Everglades Chair
Rod Tirrell 954-202-9263

Outings Chair
Judy Kuchta 305-308-8913

Education Chair
Open

Fundraising Chair
Open

Membership Chair
Andrea Hagen 954-475-9399

Volunteer Coordinator
Anita Lind 954-983-3709

Programs
Open

Media
Open

Newsletter Editor
Carole Walsh 954-987-3642
carolewalsh@mindspring.com

Newsletter Folding Coordinator
Open

Executive Committee Member
Leigh Buckner 954-563-0073

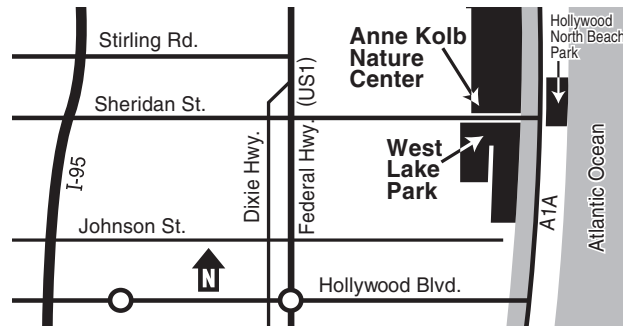
Broward Sierra News is published monthly for the members of the Broward County Group, Florida Chapter of the Sierra Club. Subscriptions are available for non-members. Send inquiries to: **Broward Sierra News**, P.O. Box 350432, Ft. Lauderdale, FL 33335

Membership Corrections -
To expedite any membership change (new addresses, etc.) or problems with your membership records please send your name, member number, old and new address or problem to:
Member Services, 85 Second Street, San Francisco, CA 94105-3441. 415-977-5653 or e-mail <address.changes@sierraclub.org> or <membership.services@sierraclub.org>
If further assistance is needed, please contact your local Membership Chair, Andrea Hagen 954-475-9399.

Broward Sierra Club General Meetings

Held on the first Tuesday of every month at Anne Kolb Nature Center (954-926-2480). Outings sign-up starts at 7:00 p.m. and the general meeting begins at 7:30 p.m. The public is welcome!

To get to Anne Kolb Nature Center: Take I-95 to the Sheridan St. exit. Go East past Federal Hwy. The entrance to Anne Kolb Nature Center will be on your left (After the sign for West Lake Park). The Center is before the Intracoastal Bridge.



Executive Committee Meetings

Held on the 3rd Monday of each month at 7:00 pm, in room 430a of the Broward County Governmental Center. For details call Harold Hancock at 561-417-0216 or e-mail hdhcpa@yahoo.com.

FROM THE EDITOR - COMINGS AND GOINGS

I hope everyone had a good summer. We're back, and there have been some changes in the group over the summer.

Our Outings Chair for many years, **Jackie Fisher**, is stepping down from her position. Under her leadership, we have visited and learned about some of the most beautiful and endangered places in Broward County. Jackie's sure hand at organizing and locating the outings will be sorely missed. In 2000 Jackie was honored with the national Sierra Club Otter award, given for outstanding contributions to the group outings program. She will remain active in the group and will continue to offer her assistance and advice as well as going to new outings as she can.

Also leaving us is Program Chair **Joyce Tarnow**. She is moving out of the county to the center of Florida where the environment is still fairly unsullied. In Joyce's 35 years in Broward County, she has lent her energy and drive to many worthy causes, including the Sierra Club. Joyce has been a leader in defending our environment, women's rights and reproductive freedoms, free speech, and in fighting rampant overdevelopment. To many in the Broward activist community, Joyce's name is a watchword for excellence in fighting the good fight. Perhaps best known for the Women's Clinic in Ft. Lauderdale, which provided reproductive health and prenatal care to low income women without question or challenge, Joyce has long been known as a champion of individual rights and freedoms. Her dedication to the environment took a

strong upturn last year when she spent a month crewing on a Sea Shepherd ship, dedicated to protecting the whales and baby seals. This is perhaps best representative of her devotion to the little person - being willing to throw herself in front of the danger that hunters pose to these elegant and beautiful creatures. Her dedication to people is even stronger. Joyce will be severely missed by all in Broward and by our group. Her energy and drive will be difficult to replace. All of us join in wishing Joyce bon voyage and best of luck in whatever she does.

On a happier note, we would like to welcome our new Outing Chair, **Judy Kuchta**. Judy is a Miami native who moved to Hollywood in 2001. She has been a member of the Sierra Club since 1983 and has served on several Sierra Club Committees, including Membership, Political Fundraising, and Outings. She has enjoyed many South Florida outings, as well as one to Georgia for whitewater rafting, to the Claire Tappan Lodge in the Sierra Nevada Mountains of California, and to the Dry Tortugas. "On these trips I've created bonds and relationships with many wonderful people who care about the environment." Judy said. "I feel strongly about teaching environmental sensitivity on outings. And I'd like to organize a snow skiing outing and stay at the Claire Tappan Lodge. I dream of doing 10,000 islands in the Everglades National Park, too. But I know we have to start small and short in our outings in order to develop a core, strong group who are committed to doing the more challenging and lengthy trips. I look forward to working with Jim Gross, the Miami Outings Chair. He's an unfathomable resource." We're glad

WE NEED YOUR HELP!

The Sierra Club functions on the work of a small group of dedicated volunteers. We are truly a grassroots organization relying on the active participation of our members. The Broward group is looking for volunteers to fill the important positions of **Program Chair**, **Newsletter Folding Coordinator**, and **Fundraising Chair**. If you have questions about a particular position or want to get involved, please contact Harold Hancock at 561-417-0216 or Louis Serra at 954-442-0880.



PRIMARIES ARE SEPTEMBER 5th BROWARD SIERRA CLUB ENDORSES LOCAL CANDIDATES

Be sure to get out and vote! Check our website <<http://florida.sierraclub.org/broward>> to find out which local candidates are endorsed by the Broward Sierra Club.

CONSERVATION CONFERENCE

Don't miss this fall's Florida Chapter Conservation Conference, to be held Friday through Sunday, November 10-12. Featuring programs and discussions on Florida's environmental challenges such as: Energy - Red Tide - Growth - Wetlands - Biodiversity - Water Quality - Offshore Drilling - Everglades. Training sessions and outings

NEW LOCATION!

We're excited about the new location, which will be the beautiful Pine Lake Retreat, in central Florida. Pine Lake Retreat is conveniently located on Rt. 27 just south of Leesburg and the Florida Turnpike. Housing options include: chalets, lodges, RV or tent camping. Great food in their cafeteria, as well as kitchen facilities. Spacious, fully equipped meeting rooms. The camp is loaded with activities and sport options. Fun for the whole family.

So mark your calendar now for this weekend of learning, sharing, and fun. More details and a sign up sheet will be in the next Pelican. More information on the camp is at <<http://www.pinelakeretreat.com>>. For more information on the conference call Rosalie Shaffer at (941) 729-9248.

Conservation Notes, continued from page 1



Palm Beach already leads the three counties in reuse, and its Delray Beach sewage outfall has been monitored by Palm Beach County Reef Rescue, a volunteer group that documents the sewer outfalls' impact on the reef system. That group recently won a concession from the Florida Department of

Environmental Protection mandating a one year federal study of the Delray outfall on the causal relationship between outfall nutrients and coral die-offs.

Of the three SE Florida counties, Broward is pulling up the rear with water reuse levels at less than 5%. According to the South Florida Water Management District, Broward County has plans to shut down its ocean outfalls and move toward 100 percent reuse of its wastewater within ten years.

This is unlikely to occur, as it requires the cooperation of all of Broward County's municipalities. While reuse is a lofty long-term goal, the most immediate and effective action Broward County and local municipalities can take is to implement advanced waste water treatment before either pumping our wastewater out to sea or pumping it underground through Underground Injection Control wells.

The Sierra Club is closely monitoring the Broward County outfall originating in Pompano Beach, and the city of Hollywood outfall. It has been well documented that sewage outfalls are degrading our oceans and reefs, and the Palm Beach study should confirm earlier scientific conclusions. Based on this information, The Sierra Club will challenge the two outfalls in Broward County as their permits come up for renewal.

Get NatureScape Certified!

Did you know that landscape irrigation accounts for up to 50% of

Local Sierra Group Outings

*To preserve a place, you must believe in it.
To believe in it, you must see it.*



SEPT. 16, SAT. ECONLOCKHATCHEE (ECON) RIVER FROM FL 50 TO TAKEOUT. The distance from FL 50 to the takeout is 9 miles. There will be a small charge to launch the boats and for the shuttle. Limit 12 people.

Contact Leader Ken Bowman at 407-435-2021, 407-482-1837 or kbowman@prodigy.net for reservations and information. (Central Florida Group)



SEPT. 23, SAT. INTERMEDIATE KAYAKING LESSON AT ANNE KOLB/WEST LAKE. Prerequisite to this course is the basic kayaking class or prior experience. 9am to 12:30pm. Rated Moderate. *Members \$20, non-members \$23. Lunch included.*

Leader: Judy Kuchta (305) 308-8913 or judykuchta@yahoo.com (Broward Group)



SEPT. 30, SAT. JUPITER INLET NATURAL AREA CLEANUP.

9am - noon. We will remove exotic plants and trash as part of the National Public Lands Day celebration. Pre-registration required. Limit 25. *FREE.* Moderate or Strenuous tasks available.

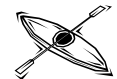
Contact Sabrina Carle (561) 732-4486 or Carles@bellsouth.net. (Loxahatchee Group)



OCT. 14, SAT. NOBLE HAMMOCK CANOE. Paddle an interesting canoe loop trail in Everglades National Park located just north of West Lake. We will attempt to find the hidden canoe trail to West Lake. Join us in this adventure, observing lots of wildlife and gators as we go. Rated Moderate. Limit 16.

Members \$35, non-members \$40.

Contact Leader: Jim Gross at 305-665-2401 or JMGross3013@aol.com. (Miami Group)



OCT 21, SAT. WEST LAKE INTERMEDIATE KAYAK. Now that you have the Intermediate Training, come on a more advanced trip in West Lake. Enjoy the beauty and learn about the ecology of this mangrove estuary and saltwater lake. Prerequisite is the intermediate lesson or previous kayak experience. Rated Moderate. Limit 18. *Members \$25, non-members \$30. Lunch included.*

Leader: Judy Kuchta (305) 308-8913 or judykuchta@yahoo.com (Broward Group)

Outing Leaders Wanted. Outing Leaders get involved, get active, meet new people, have fun, and attend their outings for free. (Assistant Leaders attend for half price.) If you are interested, contact Judy at (305) 308-8913 or judykuchta@yahoo.com

We would like to invite you to come on one of our fine educational outings! If you have any questions about an outing, you can check with the certified Broward Sierra Outing Leader in charge of the outing. Some of the outings need no experience; others require some level of proficiency. All participants in Sierra Club outings are required to sign a standard liability waiver. If you would like to read the Liability Waiver before you choose to participate in an outing, contact the leader of the outing.

For Broward Group outings, make your check payable to: Broward Sierra Outings. Include the name and date of the trip on your check. Also include your name, phone number, email and street address. Mail checks to: Judy Kuchta c/o Jackie Fisher, 4992 S.W. 105 Way, Cooper City, FL 33328.

You may call the Sierra Hotline for updates at 954-567-2841.

LOOK FOR UPDATED INFORMATION ON OUR WEBSITE:

<<http://florida.sierraclub.org/broward>>



SIERRA CLUB HATS & TOTES



Sierra Club apparel is created with organic cotton, renewable resources, and technical synthetics produced to have the least impact on the environment!

The Sierra Club black twill cap has a fabric closure, adjustable brass buckle and hideaway closure with the Sierra Club logo embroidered in white on the front. Price: \$7.

The waterproof **Sierra Club Excursion/Tote Bag** is gray with black trim and is ideal for shopping or camping/beach trips. With convenient top zipper, comfortable shoulder straps and tasteful Sierra Club logo on the side. Price: \$10.

Purchase both cap and tote as a "set" for \$15! Please add shipping and handling costs: \$3.50 for 1st item, \$1 for each additional item (please note that each "set" counts as 2 items). Please allow approx. 5 to 10 days for delivery. Due to incredibly discounted pricing we are unable to offer exchanges; returns accepted only for defective merchandise. Please include your check made out to "Broward Sierra Club" along with this order form, and mail to: Broward Sierra Club, PO Box 350432, Ft. Lauderdale, FL 33335.

Name: _____
Address: _____
City/State/Zipcode: _____

Qty	Item	Price/each	Shipping	Price/total
	Hat	\$7		
	Tote	\$10		
	Hat & Tote Set	\$15		
Total Amount				

Join the Sierra Club and receive a FREE Sierra Club Weekender Bag!



(While supplies last)

Yes, I want to join the Sierra Club! I want to help safeguard our nation's precious natural heritage and receive a free Sierra Club Weekender Bag. My payment is enclosed.

Name _____
Address _____
City _____
State _____ Zip _____

Phone (optional) (____) _____

Check enclosed, payable to Sierra Club Mastercard Visa AmEx

Cardholder Name _____

Card Number _____ Exp. Date ____/____/____

Contributions, gifts or dues to the Sierra Club are not tax deductible; they support our effective, citizen-based advocacy and lobbying efforts. Your dues include \$7.50 for a subscription to *Sierra* magazine and \$1.00 for your Chapter newsletter.

Membership Categories



	INDIVIDUAL	JOINT		INDIVIDUAL	JOINT
Introductory	<input type="checkbox"/> \$25		Life	<input type="checkbox"/> \$1000	<input type="checkbox"/> \$1250
Regular	<input type="checkbox"/> \$39	<input type="checkbox"/> \$47	Senior	<input type="checkbox"/> \$24	<input type="checkbox"/> \$32
Supporting	<input type="checkbox"/> \$75	<input type="checkbox"/> \$100	Student	<input type="checkbox"/> \$24	<input type="checkbox"/> \$32
Contributing	<input type="checkbox"/> \$150	<input type="checkbox"/> \$175	Limited Income	<input type="checkbox"/> \$24	<input type="checkbox"/> \$32

F94Q

W3302 1

Enclose check and mail to: **Sierra Club**
P.O. Box 52968, Boulder, CO 80322-2968

Conservation Notes, continued from page 3

water consumption in Broward County? Or that landscape runoff is a major source of water pollution? That is why NatureScape is an important part of Broward County's water conservation program, which benefits eople, plants and animals. Our plant choices and the way we maintain our yard can impact our future water supplies.

NatureScape encourages the use of native plants in landscaping. These plants are uniquely adapted to grow in South Florida. Natives generally require little watering once established, and are naturally pest resistant, which means less use of expensive and toxic chemicals. So by using native plants we conserve water and reduce pollution while maintaining a healthy landscape.

Information on certification available at: naturescape@broward.org; or (954) 519-0317.

SIERRA CLUB MEMBER OWNED BEAUTIFUL DUPLEX FOR SALE



S.E. Pompano Beach Duplex. Spacious 3/2 and 2/2, 15 minutes from the ocean. Ceramic tile floors and ceiling fans throughout. Solid wood kitchen cabinets & vanities. **Beautifully landscaped with Florida native trees and butterfly shrubs.** Circular drive for easy in and out with two pull-off parking spaces. Excellent condition. \$565,000. See <<http://www.owners.com/TPT6006>> for more information and photos. Or call **Joyce at 954-942-7278.**



Computer Technical Support Services and Consulting

SEAN ATKINSON

technology analyst

immediate@bellsouth.net

Tel: 954.394.4828

Fax: 954.212.0204

www.immediatetech.net

ADVERTISE IN THE BROWARD SIERRA NEWS

	1 month	3 months
Business card size ad (3-3/4" x 2")	\$55	\$150
Double size ad (3-3/4" x 4")	\$95	\$255
1/2 page ad (7-3/4" x 5")	\$195	\$525

If you would like to place an ad, please contact Max Goldstein at 954-296-3411 or email him at <maxgold@yahoo.com>.