



**SIERRA CLUB**

FOUNDED 1892

# Broward Sierra News

**Vol. XXVII No. 8 NOVEMBER 2005**

<http://florida.sierraclub.org/broward>  
<http://groups.yahoo.com/group/BrowardSierra>

## THE CORAL REEFS ARE DYING – BUT YOU CAN HELP SAVE THEM!

By Pedro Monteiro, Conservation Chair

South Florida is home to the only living coral reef system in the Continental United States. It extends from the Dry Tortugas, west of Key West, northward along Monroe, Dade, Broward, and Palm Beach counties. Coral reefs worldwide are important fishery and nursery areas, are home to more than one quarter of all marine life and provide about 10% of the world's protein through fisheries. Reefs also provide coastlines with protection from erosion and sand for beaches.

The coral reefs in Florida have made it the number one dive destination in the world, with ten times as many divers as the second highest rated diving area, Australia's Great Barrier Reef, which is ten times larger. Its market value in the Florida Keys alone has been estimated to exceed \$24 billion dollars [DeeVon Meade Quirolo, Reef Relief].

In spite of the environmental and economic value of Florida's coral reefs, they are being killed at an unprecedented rate, and may be mostly dead within a few decades, due primarily to long term cumulative stresses caused by humans. Many land-based activities have important implications for reefs. The Global Coral Reef Monitoring Network reported that of all the reefs they monitor worldwide, 27 percent have been lost and another 32 percent could be lost in the next 20-30 years.

### What's Killing the Coral Reefs?

According to the EPA, agricultural and industrial runoff, increased sedimentation from land clearing, human sewage and toxic discharges are contributing to coral stress. Agricultural activities can introduce herbicides, pesticides, fertilizers and runoff from animal feed lots. Sewage discharges introduce nitrogen and phosphate compounds along with pathogens and mixtures of toxics. Uncontrolled land clearing can result in erosion, with the resultant increase in sediment loads to surface waters. Impervious surfaces such as roadways, parking lots and buildings

*continued on page 3*



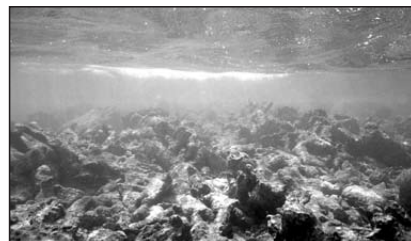
*Carysfort Reef 1975*



*Carysfort Reef 1985*



*Carysfort Reef 1995*



*Carysfort Reef 2005*

The latest reports on the state of the world's coral reefs are tragic. At least one quarter of known reefs are seriously degraded and over half are seriously threatened. This set of photographs, taken from the same vantage point from 1975 to 2005, illustrates the rapid degradation of coral reefs that has occurred throughout the Florida Keys and Caribbean Sea. Carysfort Reef, the largest and most luxuriant reef in the Florida Keys, has lost over 92% of its living coral cover from pollution, disease, physical damage, and global scale threats. The reef has lost much of its three dimensional structure and its framework-building capacity. The dead skeletons of the once dominant species, *Acropora palmata*, have become badly eroded rubble fragments in 30 years time. (Photographs courtesy of Phillip Dustan, College of Charleston)

## Broward Sierra Programs

**NOV. 1st: "South Florida Butterflies: Blues, Hairstreaks and Metalmarks - Jewels in the Crown"**



Join us for this powerpoint presentation by Dennis Olle. This program features members of the Lycaenidae (Gossamer-wings) family of butterflies, which are generally small and secretive, but colorful. Many of the local members of this Lepidoptera family, are among the rarest butterflies in South Florida, including the Atala, Bartram's Scrub-Hairstreak, Martial Scrub-Hairstreak and Silver-banded Hairstreak.



**December 6: Annual Sierra Potluck Dinner and Auction** - Bring a dish to share (bring your own reusable dinnerware) and pick up some great stuff at the auction.

Anne Kolb Nature Center is located in Hollywood on the North side of Sheridan Street, East of U.S. 1. Doors open at 7:00 PM. The meeting is open to the public at no charge.

Graphic design & layout by [carolewalsh@mindspring.com](mailto:carolewalsh@mindspring.com)  
 Printing by The Press Room  
 4111 SW 47 Ave. #309, Ft. Lauderdale, FL 33314  
 (954) 792-6729 • [www.thepressroom.net](http://www.thepressroom.net)



Recycled paper, soy ink

**Sierra Hotline**  **954-858-0160**  
 for Hotline additions, call Kip @ 954-434-2855

**SIERRA CLUB / BROWARD COUNTY**  
 P.O. Box 350432  
 Ft. Lauderdale, FL 33335

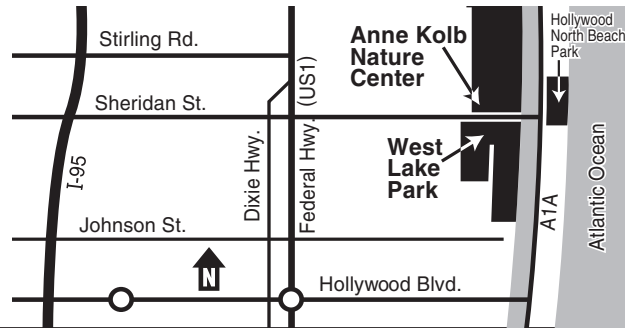
NON-PROFIT ORG.  
 U.S. POSTAGE PAID  
 FT. LAUDERDALE, FL  
 PERMIT NO. 4189

We hope you enjoy our newsletter. Why not join us right now? Come along on an outing. Get involved, learn about local issues and how they affect you and your community. Just use the membership form on the back cover.

## Broward Sierra Club General Meetings

Held on the first Tuesday of every month at Ann Kolb Nature Center (954-926-2480). Outings sign-up starts at 7:00 p.m. and the general meeting begins at 7:30 p.m. All members welcome!

To get to Anne Kolb Nature Center: Take I-95 to the Sheridan St. exit. Go East past Federal Hwy. The entrance to Anne Kolb Nature Center will be on your left (After the sign for West Lake Park). The center is before the Intracoastal Bridge.



### Committee Meetings

#### Executive Committee:

Meets the 3rd Monday of each month at 7:00 pm, in room 430a of the Broward County Governmental Center. For details call Loren Colburn at 954-761-1355 (or e-mail [lorenac1101@hotmail.com](mailto:lorenac1101@hotmail.com)).

#### Carrying Capacity Committee:

Contact Linda Brown, Carrying Capacity Chair at (954) 764-1470 or e-mail [lbrown@communityusa.com](mailto:lbrown@communityusa.com).



**SIERRA CLUB**

FOUNDED 1892

## The Broward Sierra Club Leaders

- Chair**  
Harold Hancock 954-566-9817
- Vice-Chair**  
Loren Colburn 954-761-1355
- Secretary**  
Louis Serra 954-442-0880
- Treasurer**  
Max Goldstein 954-296-3411
- Energy Issues Chair**  
George Cavros 954-295-5714
- Conservation Chair**  
Pedro Monteiro 954-525-3324
- Everglades Chair**  
Rod Tirrell 954-772-3865
- Outings Chair**  
Jackie Fisher 954-434-2855
- Education Chair**  
Open
- Fundraising Committee Chair**  
Tina Voci 954-817-3352  
[ttiinnaa@gmail.com](mailto:ttiinnaa@gmail.com)
- Political Chair**  
Open
- Carrying Capacity Chair**  
Linda Brown 954-764-1470
- Membership Chair**  
Andrea Hagen 954-475-9399
- Volunteer Coordinator**  
Anita Lind 954-983-3709
- Programs**  
Joyce Tarnow 954-942-7278
- Media**  
Open
- Newsletter Editor**  
Carole Walsh 954-987-3642  
[carolewalsh@mindspring.com](mailto:carolewalsh@mindspring.com)
- Newsletter Folding Coordinator**  
Loren Colburn 954-761-1355

**Broward Sierra News** is published monthly for the members of the Broward County Group, Florida Chapter of the Sierra Club. Subscriptions are available for non-members. Send inquiries to: **Broward Sierra News**, P.O. Box 350432, Ft. Lauderdale, FL 33335

**Membership Corrections** - To expedite any membership change (new addresses, etc.) or problems with your membership records please send your name, member number, old and new address or problem to: **Member Services**, 85 Second Street, San Francisco, CA 94105-3441. 415-977-5653 or e-mail <[changes@sierraclub.org](mailto:changes@sierraclub.org)> or <[membership.services@sierraclub.org](mailto:membership.services@sierraclub.org)> If further assistance is needed, please contact your local Membership Chair, Andrea Hagen 954-475-9399.

## EXCOM ELECTION BALLOT

MUST BE RECEIVED BY DECEMBER 2004

According to the By-laws of the Broward Sierra Group, each Board Member will serve a two-year term, electing 4 candidates one year and 5 the next year.

This year we will vote for up to 5 candidates and 5 people will be elected to the EXCOM board. The Nominating Committee selected 4 candidates. Your vote may determine the fifth EXCOM member from valid write-in candidates. If you have a joint membership, both members should select candidates for office in the "Second Member" space. When you have completed your ballot, **clip on the dotted line** and mail to:

**Broward Sierra Club, P.O.  
Box 350432, Ft. Lauderdale, FL 33335**

Members may bring ballots to the December meeting.

**All valid ballots must have either a printed newsletter mailing label on the reverse side or your membership number in the space provided:**

Membership number:



	First Member	Second Member (if applicable)
George Cavros .....	<input type="checkbox"/>	<input type="checkbox"/>
Loren Colburn.....	<input type="checkbox"/>	<input type="checkbox"/>
Mary Rochester.....	<input type="checkbox"/>	<input type="checkbox"/>
Louis Serra .....	<input type="checkbox"/>	<input type="checkbox"/>

#### Write-in Candidates

_____	<input type="checkbox"/>	_____	<input type="checkbox"/>
_____	<input type="checkbox"/>	_____	<input type="checkbox"/>

### VOLUNTEER POSITIONS AVAILABLE

Please print your name in the space of any committees where you would be interested in serving.

Political Chair \_\_\_\_\_

Fundraising \_\_\_\_\_

Outings Leader \_\_\_\_\_

Meeting Refreshment Table \_\_\_\_\_

Meeting Greeter \_\_\_\_\_

## HOLIDAY POT LUCK DINNER AND AUCTION



December's general meeting will be the Holiday Pot Luck Dinner. This year we are adding a silent auction as a fundraiser for the club.

Among the items available for bid at the silent auction will be autographed paperback editions of Arianna Huffington's book, *How to Overthrow the Government*, and Robert F. Kennedy, Jr.'s book, *Crimes Against Nature: How George W. Bush and His Corporate Pals Are Plundering the Country and Hijacking Our Democracy*. Huffington and Kennedy were featured speakers at the Sierra Summit in San Francisco, which EXCOM member Mara Shlackman attended as a delegate for the Broward Sierra Group.

If you would like to donate an item or service for the auction or would like to volunteer to help with the dinner or the auction please call Loren Colburn at 954-761-1355.

So bring a dish and some cash and join your fellow Sierrans for a holiday celebration on December 6th at the Anne Kolb Nature Center.



## ORDER NOW - STILL SOME LEFT!



Sierra Club apparel is created with organic cotton, renewable resources, and technical synthetics produced to have the least impact on the environment!

**The Sierra Club black twill cap** has a fabric closure, adjustable brass buckle and hideaway closure with the Sierra Club logo embroidered in white on the front. Price: \$7.

The waterproof **Sierra Club Excursion/Tote Bag** is gray with black trim and is ideal for shopping or camping/beach trips. With convenient top zipper, comfortable shoulder straps and tasteful Sierra Club logo on the side. Price: \$10.

**Limited time offer:** Purchase both cap and tote as a "set" for \$15! Please add shipping and handling costs: \$3.50 for 1st item, \$1 for each additional item (please note that each "set" counts as 2 items). Please allow approx. 5 to 10 days for delivery. Due to incredibly discounted pricing we are unable to offer exchanges; returns accepted only for defective merchandise. Please include your check made out to "Broward Sierra Club" along with this order form, and mail to: Broward Sierra Club, PO Box 350432, Ft. Lauderdale, FL 33335.

Name: \_\_\_\_\_  
Address: \_\_\_\_\_  
City/State/Zipcode: \_\_\_\_\_

Qty	Item	Price/each	Shipping	Price/total
	Hat	\$7		
	Tote	\$10		
	Hat & Tote Set	\$15		
Total Amount				

### Coral Reefs, continued from page 1

increase runoff rates and the runoff carries mixtures of dissolved substances to surface waters. The surface waters in any watershed eventually discharge into coastal or near-coastal waters.

To support a population that has quadrupled since 1930, South Florida has taken so much fresh water from the Everglades ecosystem that the salinity in Florida Bay is killing even more coral. Additionally, rising sea temperatures caused by global warming are contributing to coral stress worldwide, bleaching large areas of coral.

In Broward County we are contributing to these reef-killing policies by pumping tens of millions of gallons of sewage directly into the ocean every day. Although the sewage is partially treated, it still contains high nutrient levels that are causing algae to grow on the reefs, blocking sunlight and killing them. Additionally, Broward leads the state of Florida by pumping around one hundred million gallons of (partially) treated sewage underground every day, even though government officials don't know where the sewage goes once it leaves the Underground Injection Control (UIC) well. There is indication that the sewage finds its way into the ocean, and contributes to further algal growth.

Irresponsible and unsustainable beach widening projects such as the one taking place in Hollywood are causing sand and sediment to settle onto the reefs, killing even more coral. Ironically, such projects are called "shore protection projects," when in fact they do the opposite: they are killing the very coral reefs that protect the beach from erosion. As if that were not enough, the occasional

*continued on page 4*

# Broward Sierra Group Outings

*To preserve a place, you must believe in it.  
To believe in it, you must see it.*

## SUN., NOV 6TH. RESTORATION DAY AT FERN FOREST NATURE CENTER, CYPRESS CREEK

An opportunity to give something back to the community, your Sierra group and Mother Nature! Yep, we're talking volunteer work here, doing whatever is needed at a local park to restore it to its natural beauty. Help keep it wild and clean. 3-4 hours on a Sunday morning. No experience needed. Bring water and sunscreen. *Cost: Free.*

Leader: Loren Colburn 954-761-1355 [lorenac1101@hotmail.com](mailto:lorenac1101@hotmail.com)



## SUN., NOV 13TH. HIKE THE BIG CYPRESS 'NEW ACQUISITION LANDS'

As we did in July, learn the difference between the Everglades and Big Cypress, while hiking through a wide mixture of S. Florida vegetation on foot trails, overgrown buggy and gravel roads, in the area closest to Ft. Lauderdale. Familiarize yourself with this beautiful piece of Broward County's backyard, just off Alligator Alley, before the public input period begins, later this year. You may have read in the last newsletter, this entire 147,000 acre tract is coming up for review by the National Park Service, who will determine how it will be utilized. Plan to get wet. Nothing gets this lush without water. Rated moderate to strenuous with a distance of approximately 6 miles, meeting at 8 am. *Cost: Min. \$5 donation.*

Leader: Matthew Schwartz 954-764-2739

[matthew3222@yahoo.com](mailto:matthew3222@yahoo.com)



## SAT., DEC 3RD. BIG CYPRESS, SECTION II DAY HIKE

Explore Section II of the Florida Trail, north of Alligator Alley where you'll learn the difference a few inches of elevation makes to the local flora, as you trek through cypress forest, hammocks and prairie. Bring your own lunch. Rated moderate to strenuous, due to 7-9 mile distance on 'back country' trails. *Cost: Min. \$3 donation.*

Leader: Kathleen Rhoad 954-537-9195



## SUN. DEC 4TH. RESTORATION DAY AT TREE TOPS PARK, DAVIE

An opportunity to give something back to the community, your Sierra group and Mother Nature! We're talking volunteer work here, doing whatever is needed at a local park to restore it to its natural beauty. Help keep it wild and clean. 3-4 hours on a Sunday morning. No experience needed. Bring water and sunscreen. *Cost: Free.*

Leader: Loren Colburn 954-761-1355 [lorenac1101@hotmail.com](mailto:lorenac1101@hotmail.com)



We would like to invite you to come on one of our fine educational outings! If you have any questions about an outing, you can check with the certified Broward Sierra Outing Leader in charge of the outing. Some of the outings need no experience; others require some level of proficiency. All participants in Sierra Club outings are required to sign a standard liability waiver. If you would like to read the Liability Waiver before you choose to participate in an outing, contact the leader of the outing.

Make your check payable to: Broward Sierra Outings.

Include the name and date of the trip on your check.

Include your name, phone number, email and street address.

Mail all checks to:

Jackie Fisher, 4992 S.W. 105 Way, Cooper City, FL 33328.

**You may call the Sierra Hotline for updates at  
954-858-0160.**

**LOOK FOR UPDATED INFORMATION ON OUR WEBSITE:**

**<<http://florida.sierraclub.org/broward>>**

large ship runs aground on our reefs, grinding large coral areas into sand in mere minutes.



**How YOU Can Help Save The Reefs:**

There are a number of things you can do to reduce coral reef destruction. The first few don't even require any of your time!

1. Don't use fertilizers or pesticides, and don't support businesses that use them, such as golf courses and non-organic food growers; buy organic foods.
2. Consider limiting your number of children. More people lead to more development, more sewage, more pollution, more global warming, more, more, more...
3. Reduce your contribution to global warming by making more efficient use of energy: select efficient vehicles, drive less, conserve energy at home, and eat lower on the food chain (meat production is extremely inefficient, and contributes greatly to global warming and water pollution).
4. Help us stop reef-killing beach projects:
  - a. Tell Broward County to add a sand bypass at Port Everglades. The Port Everglades inlet is acting as a dam, blocking the natural southward flow of sand from Fort Lauderdale toward Dania Beach and Hollywood.
  - b. Reduce beach erosion by closing off the outfall pipes that are flushing sand into the ocean.
  - c. Require beaches to add dune vegetation to retain the sand and reduce erosion.
  - d. Ask for independent science on all beach sand projects. The consultants and scientists who worked on the Hollywood and Fort Lauderdale beach widening projects actually have a

financial stake in their approval, tainting their claims.

5. Attend comprehensive land use meetings, and county and city commission meetings, and tell the staff and elected officials to limit development.
6. Tell government officials to invest in better sewage treatment that will not pump nutrient-rich sewage into the ocean.
7. Tell Broward to stop pumping sewage underground unless the county can prove it is not harming the coral reefs.
8. Ask the Coast Guard to redefine the ship anchorage area off of Fort Lauderdale so that ship groundings will be reduced.
9. The U.S. Coral Reef Task Force <<http://www.coralreef.gov>> was established by an Executive Order on Coral Reef Protection issued by President Clinton in 1998. South East Florida Coral Reef Initiative (SEFCRI) was established to focus on reefs in the tri-county area. The SEFCRI Team is comprised of four focus teams, each responsible for addressing one of the four focus areas of concern:
  - Awareness and Appreciation
  - Fishing, Diving, and Other Uses
  - Land-Based Sources of Pollution and Water Quality
  - Maritime Industry and Coastal Construction Impacts.

Please consider participating in a local working group here in South Florida. We must offset the influence of the self-interested polluters who are profiting by contributing to reef destruction.

✓ Please help the Sierra Club Broward Group work on these issues locally by contacting Pedro Monteiro at 954-525-3324.

**Further reading:**

- Here in Broward: Cry of the Water: <<http://cryofthewater.org>>
- U.S. Coral Reef Task Force <<http://www.coralreef.gov>>
- Useful coral reef links: <<http://floridakeys.noaa.gov/links/reefs.html>>
- Reef Guardian: <<http://www.reefguardian.org>>
- 25 Things You Can Do To Save Coral Reefs <<http://www.yoto98.noaa.gov/books/reefs/reef1.htm>>

**DON'T FORGET ESCRIP**

Sign up for eScrip and participating merchants will donate a percentage of whatever you spend on your Master Card, Visa, American Express, Discover, or debit cards that you have registered with eScrip, to the Broward Sierra Club. There is no surcharge for using your card at an eScrip participating store.

**If you wish to sign up, you must register on-line:**

- Go to [www.escrip.com](http://www.escrip.com).
- At the registration section, click where it says **(Sign Up, It's Free)**.
- Select **Group Name** and enter **Broward Sierra Club Group**. Then continue with the registration. It's easy!

They have a FAQ link that will address any questions you may have. You can also contact Max Goldstein or Tina Voci. Sign up today for this easy, painless way to raise funds for Broward Sierra!

**ADVERTISE IN THE BROWARD SIERRA NEWS**

RATES		
Size	1 month	3 months
Business card size ad (3-3/4" x 2")	\$55	\$150
Double size ad (3-3/4" x 4")	\$95	\$255
1/2 page ad (7-3/4" x 5")	\$195	\$525

If you would like to place an ad, please contact Max Goldstein at 954-296-3411 or email him at <[maxgold@yahoo.com](mailto:maxgold@yahoo.com)>.

**Join the Sierra Club now and receive a FREE Sierra Club Weekender Bag!**



(While supplies last)

Yes, I want to join the Sierra Club! I want to help safeguard our nation's precious natural heritage and receive a free Sierra Club Weekender Bag. My payment is enclosed.

Name \_\_\_\_\_

Address \_\_\_\_\_

City \_\_\_\_\_

State \_\_\_\_\_ Zip \_\_\_\_\_

Phone (optional) (\_\_\_\_) \_\_\_\_\_

Check enclosed, payable to Sierra Club     Mastercard     Visa     AmEx

Cardholder Name \_\_\_\_\_

Card Number \_\_\_\_\_ Exp. Date \_\_\_\_/\_\_\_\_

Contributions, gifts or dues to the Sierra Club are not tax deductible; they support our effective, citizen-based advocacy and lobbying efforts. Your dues include \$7.50 for a subscription to Sierra magazine and \$1.00 for your Chapter newsletter.

**Membership Categories**



	INDIVIDUAL	JOINT		INDIVIDUAL	JOINT
Introductory	<input type="checkbox"/> \$25	<input type="checkbox"/>	Life	<input type="checkbox"/> \$1000	<input type="checkbox"/> \$1250
Regular	<input type="checkbox"/> \$39	<input type="checkbox"/> \$47	Senior	<input type="checkbox"/> \$24	<input type="checkbox"/> \$32
Supporting	<input type="checkbox"/> \$75	<input type="checkbox"/> \$100	Student	<input type="checkbox"/> \$24	<input type="checkbox"/> \$32
Contributing	<input type="checkbox"/> \$150	<input type="checkbox"/> \$175	Limited Income	<input type="checkbox"/> \$24	<input type="checkbox"/> \$32

F94Q

W3302 1

Enclose check and mail to: **Sierra Club**  
P.O. Box 52968, Boulder, CO 80322-2968