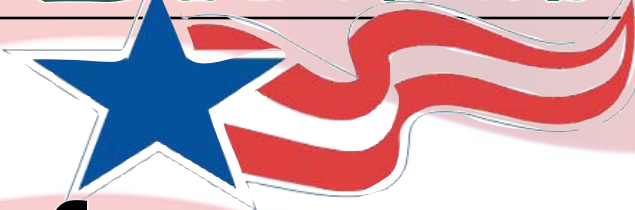




# SIERRAN



## Election 2012

### Ready to vote?

# Best picks for green candidates

By Mary Anne Hitt

I'm proud the Sierra Club is endorsing President Barack Obama for re-election. The president has demonstrated exceptional leadership in standing up to big polluters, implementing historic mercury protections, and strengthening the clean energy economy.

When I look at my baby daughter, I'm encouraged to think of how these victories will protect her health and the planet as she and her generation grows up. The Obama Administration has acted thoughtfully to address one of the biggest threats to her future -- climate disruption -- by first thoroughly reviewing the science, and then putting carbon pollution standards in place that will modernize the way we power our country -- a move that will make for healthier kids, families and workers, while creating much-needed jobs.

Granted, we still have a lot of work to do. We still need stronger smog standards, protections from toxic coal ash, and an end to the devastating process of mountaintop removal coal mining. The Sierra Club will continue working hard toward all these goals in the months and years ahead.

In short, we know that the struggle



SCOUT TUFANKJIAN FOR OBAMA FOR AMERICA

President Barack Obama gets a warm welcome on the campaign trail in Las Vegas in August

for clean air, clean water, good jobs, and healthy families is far from over -- and it doesn't stop at the coal plant gates or at the coal executive's desk. As so many of you all know, we have to fight everywhere from the halls of

Congress to city hall, and on to the voting booth.

Big polluters know that, too -- that's why they are dumping hundreds of millions of dollars into shadowy front groups and propa-

ganda campaigns to help put their political allies in office.

The goal of big polluters is the same as it has been for years: they don't want any new protections in place that would mean they have

### Sierra Club endorsements

• The Nov. 6 national election could be one of the most important for the environment, climate change and other planet-worthy policies.

• The Sierra Club urges you to consider the environment when you vote by considering candidates and ballot initiatives we endorse. See Pages 4-5.

• **Not registered to vote?** Californians have until Oct. 22 to vote in the general election. Contact the Secretary of State's office at (800) 345-8683 or online at [tinyurl.com/voteinCA](http://tinyurl.com/voteinCA)

## Chapter leader snags Club's top mountaineering honor

Meet Tina Bowman, 2012 Farquar Award winner.

By Emma Smith

Tina Bowman doesn't just bag peaks, she conquers long lists of peaks.

The mountaineer, climber, Sierra Club leader and Angeles Chapter member received the Club's Francis P. Farquhar Mountaineering Award that honors people who make significant contributions to mountaineering and "enhancement of the Club's prestige in this field."

Bowman, longtime resident of Long Beach and a retired instructor at Cal State Long Beach, more than exemplifies the climbing spirit. She is the second of only two mountaineers in the Angeles Chapter to have twice completed the three major peak climbing lists: the Sierra Peaks Section list of 248 peaks in the Sierra Nevada, the Desert Peaks Section list of 99 peaks in the desert Southwest and the Hundred Peaks Section list of 275 peaks in Southern California higher than 5,000 feet in elevation.

Bowman became the first quadruple list finisher in 1998 with her completion of the Lower Peaks Committee list of 81 (then 58) peaks under 5,000 feet in Southern California.

Bowman also completed the "tri-

ple-double" list in her unique style: climbing the final peak of each list on the same day, Oct. 7, 2006. Her list-finish summit was Independence Peak, followed by an exuberant celebration at her second home in Independence, Calif., which, incidentally was where naturalist and author Mary Austin penned "Land of Little Rain."

Like most motivated climbers, she's done plenty of non-list peaks too, such as Mt. Kilimanjaro (19,340 feet) and Mt. Aconcagua (22,841 feet) in Argentina.

And among these achievements, Bowman has found time to guide others on their own peak quests. She has been and continues to be a very popular and prolific mountaineering leader for both the Sierra Peaks Section (SPS) and Desert Peaks Section (DPS), leading excursions ranging from comparatively easy to very hard peaks.

Earlier this year she was recognized by the DPS for having led more than 50 of their 99 peaks. She has also assisted on two weeklong National trips in the Sierra Nevada as a climbing leader.

She has helped train future leaders as the Leadership Training Committee Chair (LTC) for the Angeles Chapter since 2002. Bowman has also been co-editor,

*Congratulations to Chapter historian Bob Cates who also won a national award. Page 8*

with her husband Tom, of the Leader's Reference Book (LRB) for three editions. The LRB is the primary reference and training material for Angeles Chapter leaders and has helped develop many hundreds of leaders as well as countless mountaineers.

She has held a variety of other leadership roles over the years, including chair of the national Mountaineering Oversight Committee, DPS Outings Chair, SPS Mountain Records Chair, Wilderness Travel Course lecturer on mountain travel and conditioning, etc.

Prior to the Francis P. Farquhar Mountaineering Award, Bowman in the past has won top Chapter awards too: the Chester Versteeg Outings Award and the Bill T. Russell Mountaineering Award. The former is the Angeles Chapter's highest outings award, while the latter was given by the DPS in recognition of her extensive mountaineering accomplishments as well as her wider service to the Sierra Club. All three awards recognize her tremendous impact on and off the mountain, paying tribute to someone who is not only an accomplished mountaineer,



Distinguished climber Tina Bowman continues to bag peaks and leads others on their climbing quests.

but who is, more generally, an amazing individual.

Does she have a favorite Sierra peak?

"Perhaps Mt. Whitney would be my favorite peak or climb because it was my first when I was 15 with my dad and a cousin, and because I climbed the East Face in 2007, thanks to Doug Mantle and Marcelo Altamirano," she says. "I've been to the summit four times now."

Bowman joins climbing legends Normal Clyde and Allen Steck

(1970), Jules Eichorn (1973), Glen Dawson (1973), the late Galen Rowell (1977) and mountaineer Arlene Blum (1982) in being an awardee. She received her award Aug. 4 at the Sierra Club's Annual Awards event in San Francisco, not too terribly far from the peaks that have distinguished her climbing career.

*Emma Smith is a Southern Sierran intern and a junior at Pomona College in Claremont, Ca. Information for this story was provided by Chapter entities.*

### Web Edition

Welcome to the e-edition of the Southern Sierran! You'll find all-color photographs and embedded links to make the reading easy. The downloaded PDF makes it easy to read now or save for later -- and no need to place it in the recycle bin afterward! Let us know what you think too. Happy reading!



**Want to become a Sierra Club leader? Find out how. Page 3**



**Explore Ecuador, from high country to the Amazon jungle. Page 6**



**Get the picture? You will at the Camera Committee auction. Page 8**



# Sierra Club y la tierra

By Michael Brune  
EXECUTIVE DIRECTOR, SIERRA CLUB

You're probably already aware that Latinos are the fastest growing segment of American society. Latino influence on our economy, our culture, and our politics will only increase in the coming years. But what about the environment? Where do Hispanics in the United States stand on issues like clean energy, protection for wilderness, and climate change?

New information shows Latino support for environmental issues is stronger than ever.

Together with the National Council of La Raza, the Sierra Club recently led a nationwide survey of Latino voters and their environmental concerns and priorities. This was a follow-up to a Sierra Club 2008 survey of Latino voters, which was the first of its kind. This project included focus groups with registered Latino voters in Houston and Los Angeles, followed by a bilingual phone poll of 1,131 registered Latino voters across the country.

Here are five key takeaways from the survey:

1. Overall, Latinos are strongly pro-environment. In both the focus groups and phone poll, Latino voters consistently expressed a strong desire to protect the environment

and move toward a clean energy future.

2. Nearly all Latino voters (91%) view outdoor activities as important to their way of life and support environmental safeguards that protect their family, community and culture. Substantial numbers take advantage of public outdoor spaces, and nearly 7 in 10 Latino voters favor designating more existing public lands as national monuments.

3. Many Latinos have firsthand reasons to distrust polluters -- they report that they live or work near toxic sites. Many also have family members whose health was affected by environmental pollution. Nearly half of respondents (47%) reported that they or someone in their family has faced asthma, and 41% reported the same thing about cancer. Since 2008, their concern over the pollution of air and water has grown by 10 points.

4. Latinos are as concerned about jobs and the economy as any other group, but they overwhelmingly believe that conservation and clean-energy solutions will function as job creators. A hefty 86% of Latino voters report that they would prefer



the U.S. to invest in clean, renewable energy sources rather than fossil fuels. Further, Latino voters almost unanimously said they would prefer to work in the clean energy industry over the fossil fuel industry, provided salary and benefits are equal.

5. Global climate change? Nine in 10 Latino voters believe that global climate change is already happening or will happen in the future. That may help explain why nearly 6 in 10 Latino voters are willing to pay more each month on their electricity bill to have their home's electricity come from clean sources.

Of course, for anyone who's been paying attention, this survey confirms something that should have been obvious all along. After all, Latinos led the defense of California's climate legislation (Proposition 23), and Latino communities have been among those leading the fight against incinerators and toxic dumps for decades. For those who haven't been paying attention, though, seeing just how deep and broad the support for environmental issues runs among Latino voters ought to be a wake-up call.

## Volunteer opportunities

The Angeles Chapter relies on volunteers to carry out the mission and goals of the Sierra Club. Here are some opportunities on how to get involved. If you are interested, contact Senior Chapter Director Ron Silverman at (213) 387-4289 or e-mail him at ron.silverman@sierraclub.org.

### Volunteer editor/designer wanted

If you are web savvy, enjoy creating graphics and layouts and are good at editing copy, then we have an exciting new volunteer opportunity for you! Put your graphic and editing abilities to good use and reformat our current on-line Schedule of Activities information into a printable version for mailing and tabling. Our new online capability allows us to list events, hikes, and meetings in real time. Now we need to morph that information into listings that are easy to print out and mail.

### Chapter treasurer position available

If you have a knack for numbers, a background or interest in accounting, the ability to understand checks and balances, and good people skills as you will be coordinating with all entity treasurers compiling the Annual Financial Statement, this may be the perfect volunteer spot for you. Good organizational skills needed. This is a rewarding venture that allows you to be an intricate part of the Chapter and affords you an opportunity to deal with interesting folks in the National Office.

### Newly created Volunteer Ambassador position

If you have a general understanding of how things work at the Angeles Chapter, i.e. groups, sections, task forces, committees, conservation, outings, political committees, etc., and you'd like to help our membership grow, then we have the perfect spot for you. As our Volunteer Ambassador, you will respond to inquiries from new members about what current volunteer options are open to them. Perfect for someone who would enjoy introducing new members to the volunteer opportunities in the Chapter.

# A message to Chapter members...

By Mike Sappingfield and Susan Heitman

The Angeles Chapter has recently made some significant changes to the manner in which it communicates with members (you!). While there are members who would prefer there had been no changes, Angeles Chapter Chair Hersh Kelley reports that circumstances caused the Chapter to advance its plans for electronic communications.

Here is information on the changes:

## Southern Sierran

Beginning with the July-August issue, the print version of the Southern Sierran is no longer being mailed to the entire membership, but only to those who request a mailed copy. An invitation to request the Southern Sierran by mail was enclosed in the May-June 2012 issue; to date approximately 500 people (out of a membership of 40,000) have requested printed copies.

Current plans call for mailing one issue a year to all Chapter members, with an insert containing the leader directory information now included in the Schedule of Activities.

The news and announcements in the Southern Sierran are incorporated into the Chapter website (angeles.sierraclub.org). In addition, a PDF digital copy of each full, printed issue will be available on the website.

▶ To subscribe to Angeles Chapter E-news, send an e-mail with the subject "E-news" to southern.sierran@sierraclub.org

▶ To opt in to receive print versions of the Southern Sierran, send an email with the subject "Opt-in by print" to southern.sierran@sierraclub.org and include your name and address.

Or, send a request in writing to: Subscriptions, Sierra Club Angeles Chapter, 3435 Wilshire Blvd #320, Los Angeles, CA 90010-1904.

## Schedule of Activities

The Schedule of Activities will no longer be produced in its current format. This was announced in the July-October 2012 issue, along with a form to request a printed, mailed list of the outings and activities portion of the Schedule. To date, approximately 300 people (out of a membership of 40,000) have requested this printed version, which will be mailed beginning in October 2012.

The outings and activities formerly printed in the Schedule are now in the online Schedule of Activities (angeles.sierraclub.org/find\_hike\_trip\_event). This new system offers much more timely information on outings and activities, as well as useful functions such as maps to trailheads and easy contact with trip leaders.

The leader directory formerly printed in the Schedule will be included in a once-a-year edition of the Southern Sierran that will be

mailed to the entire membership. This is expected to be in the March-April issue.

The remainder of the information now in the Schedule is included in various sections of the chapter web site, angeles.sierraclub.org.

▶ To opt in to receive print versions of the Schedule of Activities Outings, send a request in writing to: Schedule of Activities Outings, Sierra Club Angeles Chapter, 3435 Wilshire Blvd #320, Los Angeles, CA 90010-1904.

## Why was this done?

The conversion from print/mail to electronic distribution has been under discussion for some time, primarily driven by four factors: timeliness of information, the need to reach a wider and more diverse audience, cost, and the desire to reduce our environmental footprint.

In preparation, we converted our website into a new format that is easier to read and much easier to keep current. Working closely with the Outings Management Committee, we installed a new, online, interactive events calendar (built in a system called OARS, Online Activity Registration System, developed and maintained by the national Club and in use by chapters around the country).

This events calendar -- essentially the Schedule of Activities in online format -- avoids the long lead time for posting outings required by a printed version; it currently has

between 600 and 700 outings and events listed, with the ability to contact leaders, access maps, sort by type of trip, etc.

## Why was it done suddenly?

By April, it had become clear that the Chapter was faced with an urgent cash flow issue. After consultation with National, the Executive Committee concluded that continuing to print and send the publications to all 40,000 members, knowing that not everyone reads them, was not financially responsible.

By dramatically curtailing the circulation of the Southern Sierran and by transferring the information in the Schedule of Activities to the chapter website -- along with an aggressive fundraising push -- enough money has been saved (and raised) to keep us in the black throughout this year; and the savings will be even greater in future years.

We appreciate the patience and understanding of our membership during this transition. Change is never easy, but we think that the new website, online interactive events calendar, and electronic newsletter will help the Angeles Chapter provide better service and information for all its members!

*Mike Sappingfield is chair of the Chapter's Finance Committee. Susan Heitman is Angeles Chapter Communications Chair.*

## OBAMA/PAGE 1

dates whose jobs plan is simply pollution without limits. But President Obama has embraced a clean energy future that puts Americans to work without risking the air we breathe and the water we drink.

But this election is about much more than just one person's job -- it's the future of all the things we care about. We have to defend all the victories we've won to ensure that we can build upon them in the years to come -- so that our kids have healthy air and water as they grow up. And we have more work to do.

If the president is defeated, big polluters will get free reign to turn back the clock and begin polluting our air and water without fear of repercussions.

The contrast is clear, and the stakes are high. Big polluters may have millions to spend, but we know we have what it takes to beat them: our people. People who are willing to stand up, work hard, and fight for what is right.

It's critical that we lend our voices and our power to ensure we win this fight, ensuring a cleaner, brighter, and healthier future for our country, our families, and our planet.

If President Obama is re-elected, he will have a clear mandate to protect Americans' air, water, land and health, creating momentum for progress on the issues we care so deeply about for generations to come. That's an essential victory for parents like me who want a better, safer and healthy future for our kids -- and an essential victory for all Americans.

*Mary Anne Hitt is director of the Sierra Club Beyond Coal Campaign*

## Southern Sierran

angeles.sierraclub.org/news/SouthernSierran.asp  
southern.sierran@sierraclub.org

Mary Forgione Editor  
Tom Politeo Advertising

### Staff

Ron Silverman Senior Chapter Director  
Jane MacFarlane Chapter Coordinator  
Jennifer Robinson Conservation Coordinator  
George Watland Conservation Coordinator

### Office Volunteers

Gloria Cedrone, Lori Ives, Ute Lee,  
Patty Sappingfield, Jim Ulmer,  
Jacqelen Ruben, Loren Lee, Cecilia Wilmott,  
Charming Evelyn, Carmen Paz Stanuikynas,  
Bonnie Kinneer, Bonnie Strand,  
Edward McKittrick, Grace Kadoya

### Chapter Officers

Hersh Kelley Chapter Chair  
Mary Morales Vice Chair

The Southern Sierran (ISSN 1073-6875) is published bimonthly by the Sierra Club Angeles Chapter, 3435 Wilshire Blvd. #320 Los Angeles, CA 90010-

1904. Phone: 213-387-4287, ext. 212 (fax: 387-5383). Hours: Mon.-Fri., 10 a.m. to 6 p.m.. Website: www.angeles.sierraclub.org.

Subscription rate for Chapter members is \$1 and is included in membership dues. For nonmembers, the annual rate is \$12. Single copies are \$2 by mail. Periodicals postage paid at Los Angeles, CA 90052.

**POSTMASTER:** Send change of address to Southern Sierran, Sierra Club Data Changes, 3435 Wilshire Blvd. #320, Los Angeles, CA 90010-1904.

**Contributors:** Deadline for the November-December issue is September 30. Fax, mail, or e-mail submissions to the editor at the Chapter office. The editor reserves the right to reject or edit all submissions.

Accepted submissions and images may also appear on Sierra Club websites.

**Advertisers:** To advertise, call 213-387-4287, ext. 212. Deadline for the November/December issue is October 5 or e-mail sierran-ads@politeo.net

©2012 Sierra Club Angeles Chapter. Image copyrights held by the artists. Opinions expressed by contributors are not necessarily those of the Angeles Chapter.

The Sierra Club is open to all people who believe in preserving the environment for future generations. Club policy prohibits discrimination on the basis of race, color, national origin, gender, or native language.

Printed on recycled paper with soy-based inks.



# Conservation news

## Montebello Hills Fire lends urgency to oilfield plan

Twenty-one fire engines, approximately 200 firefighters and two water-dropping helicopters doused a three-alarm wildfire in a Montebello Hills oilfield that's slated for a housing development.

In the wake of the fire, the Save the Montebello Hills Sierra Club Task Force renewed its concerns about building a high density, residential development in hills surrounded by a dense ring of flammable coastal sage. The proposal would place houses atop an active oil field, in close proximity to operating oil well cellars and their pumping units.

If the hills were developed, the task force says, firefighters and police officers would have been faced with the responsibility of evacuating frantic residents in addition to fighting the flames. Luckily less than a dozen workers needed evacuation.

And then there's the danger of the flammables on the site. The oil company that operates the oil field was worried about the significant possibility of hazardous materials, oil and natural gas, being released into the environment during this fire. Plains Exploration & Production Company (PXP) took the unusual step of filing a pre-emptive Hazardous Materials Spill Report with the California Emergency Management Agency. Fortunately, a release did not occur, but the dangers are no less diminished for families if the development goes forward.

—Linda Strong, chair, Save the Montebello Hills Sierra Club Task Force

## Orange County Plan changes threaten Trabuco Canyon

Despite intense public opposition, the Orange County Planning Commission in late July approved a major overhaul of two master planning documents for the canyon areas, the Orange County General Plan and the Foothill Trabuco Specific Plan, including deleting a requirement that new development be "rural" in character.

The changes were made at the request of Rutter Development whose president, Dave Eadie, said the Foothill Trabuco plan "just doesn't work" because not enough houses have been built in the canyons since the plan's enactment in 1991.

The plan overhaul also repeals limits on grading along Santiago Canyon Road, allows developers to cut down formerly protected healthy oak trees throughout Trabuco Canyon and replace them with acorns, and raises the allowable traffic volume on Santiago Canyon Road from 800 to 2,720 vehicles per hour. Rutter needs the plan revisions to legitimize a mass-graded 65-unit housing tract, Saddle Crest, proposed along Santiago Canyon Road north of Cook's Corner, according to an environmental impact report (EIR) for the project. Irons against.

Where the original plan requires developers to preserve a certain amount of "natural open space" within each project, Rutter persuaded commissioners to delete the word "natural," so that he can now count graded areas, such as manufactured slopes, as open space.

Orange County approved a smaller version of Saddle Crest in 2003, including similar amendments, but it was shot down in 2005 by a lawsuit brought by environmental organizations including the Sierra Club. The appellate court held that the project violated the General Plan's level of service policy for Santiago Canyon Road.

The plan change now goes to Orange County supervisors.  
—Rural Canyons Conservation Fund



**Theodore Payne Foundation**  
for Wild Flowers & Native Plants, Inc.  
10459 Tuxford Street, Sun Valley, California 91352

**Fall Festival & Native Plant Sale**  
Fri-Sat, Oct. 12-13, 8:30 AM-4:30 PM  
Member discount (memberships available at the door)  
Fri-Sat, Oct. 19-20, 8:30 AM-4:30 PM  
Discounts to all!

[theodorepayne.org](http://theodorepayne.org) | (818) 768-1802

IF YOU ARE ON AN OLDER MEDICARE SUPPLEMENT PLAN YOU ARE PROBABLY PAYING TOO MUCH

*new medicare supplement plans are now available*

We have already saved clients as much as \$80/mo. with IDENTICAL plan benefits  
Call 800 487 0880 to see if a new plan is right for you



CA lic# 0669770 0A02225



**Joshua Davidson, M.D., M.P.H.**  
Allergy, Asthma & Immunology  
A Medical Corporation

3400 Lomita Blvd., Suite 301  
Torrance, CA 90505  
Phone: (310) 534-4494  
Fax: (310) 534-4534  
joshua.davidson@me.com  
www.davidsonallergy.com



# Sierra Club leadership training session starts October 6



Leaders in training learn navigation skills at a desert event organized by the Chapter.

By Jane Simpson

The Angeles Chapter Sierra Club is home to one of the largest outings programs on the planet. Each year, the Chapter sponsors thousands of trips ranging from beach barbecues to mountaineering expeditions in Southern California, across the nation and the world.

You can take the first step toward becoming a leader by attending a class offered by the chapter Leadership Training Committee on Saturday, Oct. 6, at Eaton Canyon Nature Center in Pasadena. The class is held just twice a year for training in this important leadership role.

During the seminar, participants learn the basics of leadership. Experienced Sierra Club leaders will tell you how to plan a trip, prevent problems on the trail and make sure that

everyone – including you – has a great time. They'll also explain good conservation and safety practices while on the trail. And they'll give you tips for getting your "O" rating quickly and then, if you choose, pursuing more advanced leadership ratings.

The all-day class costs \$25. The application is online at [angeles.sierraclub.org/ltc](http://angeles.sierraclub.org/ltc).

Mail the application and check, payable to Sierra Club, to Steve Botan, LTC Registrar, 18816 Thornwood Circle, Huntington Beach 92646. You also can reach Botan by phone (714-321-1296) or e-mail ([ltcregistrar@hundredpeaks.org](mailto:ltcregistrar@hundredpeaks.org)). Applications and checks are due Sept. 22. Scholarships are available for those with financial need. Apply to LTC Chair Tina Bowman ([tina@bowmandesigngroup.com](mailto:tina@bowmandesigngroup.com)).

**Donate it running or not**



You receive a tax deduction and help the Angeles Chapter.

Contact Ron Silverman  
213.387.4289  
[ron.silverman@sierraclub.org](mailto:ron.silverman@sierraclub.org)



**1000 for \$100**

Your one time or monthly donation to the Angeles Chapter of the Sierra Club helps us green the environment and is particularly timely in a presidential election year.

To donate on line please visit:  
[angeles2.sierraclub.org/join\\_donate/](http://angeles2.sierraclub.org/join_donate/)

**THE GREENEST HOME**  
is one that's already built.

**ERIKLERNER REAL ESTATE BROKER**  
310 729 4597  
LEED@AP ECOBROKER® REALTOR®  
ADVICE PLANNING GUIDANCE SERVICE  
ACQUIRING HOLDING OFFERING PROPERTIES  
DRE #01225073 KELLER WILLIAMS REALTY  
INFO@REALESTATEARCHITECT.COM®



As an Energy Upgrade Participating Contractor, we can help improve the energy efficiency and comfort of your home.



**HARDING CONSTRUCTION & SUSTAINABLE SOLUTIONS**  
562-333-6392 • [www.HardingConstruction.biz](http://www.HardingConstruction.biz)

- Rebates and Incentives Up To \$8000
- Green Remodeling
- Home Energy Audits
- Energy Efficient Mortgages
- Windows · Insulation · Air Sealing

License #B895042

Victor A. Herzfeld, CFP®

**HERZFELD INVESTMENT MANAGEMENT**

(626) 975-5235 · [vicswire@pacbell.net](mailto:vicswire@pacbell.net)  
713 W. Duarte Road, #G · Arcadia, CA 91007  
[www.herzfeldinvestmentmanagement.com](http://www.herzfeldinvestmentmanagement.com)

**Jan C. Scow Consulting Arborists, LLC**

- Oak preservation
- Hazard tree evaluation
- Disease and pest diagnosis
- Restorative pruning recommendations
- Tree preservation during construction
- Oak compatible landscaping
- Tree value assessment

[www.JanScow.com](http://www.JanScow.com) 818.789.9127



# Election 2012: Angeles Chapter

## Candidate endorsements

How do we decide what candidates to endorse?

Angeles Chapter political activists work at the local level in both Los Angeles and Orange counties to promote the election of environmentally sensitive candidates to public office, by recommending endorsements to the chapter Executive Committee, organizing support for endorsed candidates and maintaining a liaison with successful candidates after election.

Decisions are then vetted by Sierra Club California, a legislative advocacy organization that lobbies the state Legislature, the admin-

istration, and state government agencies to protect the state's natural resources and to improve the health and safety of Californians. For the latest California endorsements, go to [sierraclubcalifornia.org/ca-elections](http://sierraclubcalifornia.org/ca-elections). Share this list with your friends and family – and don't forget to vote on Nov. 6!

Candidates for federal office are vetted by the national Sierra Club Political Team. For a list of Sierra Club's political endorsements nationwide visit: [www.sierraclub.org/politics/endorsements/](http://www.sierraclub.org/politics/endorsements/)

### California State Assembly

District 38: Edward Headington (Santa Clarita)  
 District 41: Chris Holden (Pasadena)  
 District 42: Adrian Nazarian (Sherman Oaks)  
 District 43: Mike Gatto (Burbank)  
 District 45: Bob Blumenfeld (W. San Fernando Valley)  
 District 49: Edwin "Ed Chau" (Alhambra, Arcadia)  
 District 50: Betsy Butler (West LA)  
 District 51: Jimmy Gomez (Los Angeles)  
 District 52: Norma Torres (Ontario)  
 District 53: John Perez (Downtown LA)  
 District 54: Holly Mitchell (Culver City)  
 District 62: Steve Bradford (Inglewood)  
 District 63: Anthony Rendon (South Gate)  
 District 65: Sharon Quirk-Silva (Fullerton, Anaheim)  
 District 66: Al Muratsuchi, (South Bay)  
 District 70: Bonnie Lowenthal (Long Beach)

### U.S. Congressional Districts

District 25: Lee Rogers (Santa Clarita/Palmdale)  
 District 26: Julia Brownley (Westlake, Ventura County)  
 District 27: Judy Chu (Pasadena)  
 District 29: Adam Schiff (Hollywood)  
 District 32: Grace Napolitano (W. Covina)  
 District 33: Henry Waxman (Coastal Los Angeles)  
 District 34: Xavier Becerra (Downtown LA)  
 District 37: Karen Bass (Culver City)  
 District 38: Linda Sanchez (Whittier)  
 District 40: Lucille Roybal-Allard (Downey)  
 District 43: Maxine Waters (Inglewood)  
 District 44: Janice Hahn (Carson)  
 District 45: Sukhee Kang (Irvine)  
 District 46: Loretta Sanchez (Santa Ana)  
 District 47: Alan Lowenthal (Long Beach/Westminster/Garden Grove)

### California State Senate

District 25: Carol Liu (Pasadena) — District 27: Fran Pavley (Malibu, Ventura County)

## California propositions

The Sierra Club has taken the following positions on three California ballot measures. For a detailed description of each visit the California Secretary of State Debra Bowen's website at [www.sos.ca.gov/elections/ballot-measures/qualified-ballot-measures.htm](http://www.sos.ca.gov/elections/ballot-measures/qualified-ballot-measures.htm).

**NO on 32: Prohibits Political Contributions by Payroll Deduction.** The measure would restrict union political fundraising by prohibiting use of payroll-deducted funds for political purposes. Same use restriction would apply to payroll deductions, if any, by corporations or government contractors. Permits voluntary employee contributions to employer or union committees if authorized yearly, in writing. Prohibits unions and corporations from contributing directly or indirectly to candidates and candidate-controlled committees.

**YES on 37: Genetically Engineered Foods. Mandatory Labeling. Initiative Statute.** Requires labeling on raw or processed food offered for sale to consumers if made from plants or animals with genetic material changed in specified ways. Prohibits labeling or advertising such food as "natural." Exempts foods that are: certified organic; unintentionally produced with genetically engineered material; made from animals fed or injected with genetically engineered material but not genetically engineered themselves; processed with or containing only small amounts of genetically engineered ingredients; administered for treatment of medical conditions; sold for immediate consumption such as in a restaurant; or alcoholic beverages.

**YES on 39: Tax Treatment for Multistate Businesses. Clean Energy and Energy Efficiency Funding. Initiative Statute.** Requires multistate businesses to calculate their California income tax liability based on the percentage of their sales in California. Repeals existing law giving multistate businesses an option to choose a tax liability formula that provides favorable tax treatment for businesses with property and payroll outside California. Dedicates \$550 million annually for five years from anticipated increase in revenue for the purpose of funding projects that create energy efficiency and clean energy jobs in California.

## Obama vs. Romney: Energy policy smackdown

By Michael Stevenson

Just in terms of energy policy alone, we are on the verge of one of the most important presidential elections in our lifetime. The decisions that will be made during this next presidential term will not only impact the way we produce and use energy but what kind of a planet we will leave for future generations. This article will briefly summarize the Sierra Club's Energy Resources Policy. It can be found by searching at [www.sierraclub.org](http://www.sierraclub.org). This policy will be contrasted with President Obama's energy policy: "Blueprint for a Secure Energy Future" which can be found at [www.whitehouse.gov](http://www.whitehouse.gov) as well as Mitt Romney's Energy Policy which can be found at [www.mittromney.com](http://www.mittromney.com).

The consensus of the scientific community is that the burning of fossil fuels is increasing CO2 and other greenhouse gas emissions to levels that will substantially change our climate, thereby threatening human health and harming natural ecosystems. To combat this problem the Sierra Club has proposed an energy policy that centers on promoting "a positive vision of a sustainable energy future."

The goal of this policy is to help wean us off fossil fuels by accelerating the development and market growth of sustainable low carbon energy resources; phase out environmentally damaging fossil fuels such as coal, tar sands oil and nuclear technologies; and maximize energy efficiency in our transportation, work place and home. The Sierra Club says that meeting these goals would be an engine for new economic growth, save money, generate jobs and develop more livable communities. This would create a better way to live on our planet by placing less pressure on the natural systems that help sustain us.

### The president's energy plan

President Obama states in his energy policy that "we can't keep going from shock to trance on the issue of energy security, rushing to propose action when gas prices rise, then hitting the snooze button when they fall again." He goes on to say that "we cannot afford to bet our long-term prosperity and security on a resource that will eventually run out."

But he says as we develop the next generation energy technologies, we will have to continue to rely on oil and gas. So he proposes "to make us more secure through controlling our energy future by harnessing all of the resources that we have available and embracing a diverse energy portfolio." He says "we must also focus on expanding cleaner sources of electricity, including renewables like wind and solar as well

as clean coal, natural gas and nuclear power."

According to the Department of Energy since President Obama took office, net oil imports have fallen from 57% to 45% of overall consumption, the lowest level in 16 years. In 2011, U.S. crude oil production reached its highest level since 2003 with a record number of oil and gas rigs operating which is more than the rest of the world combined. Since 2009 the U.S. has been the world's leading producer of natural gas.

One of the best ways to help reduce the use of fossil fuels is to become more energy efficient. To this end, Obama has mandated an increase in the average fuel efficiency for passenger vehicles to 35.5 miles per gallon by 2016 and has proposed a 54.5 miles per gallon standard by 2025. The first ever fuel economy standards for heavy duty trucks, vans and buses have been put into effect for model years 2014-2018. He has made the needed government investments in battery technology and infrastructure to support the manufacture of one million plug-in hybrid and electric vehicles by 2015.

One of the most efficient means of saving transportation energy is the use of train travel. The president has established a goal to give 80% of Americans access to high-speed rail within 25 years. Through the Energy Star program new efficiency standards for more than 30 products have been put into place and expect to save consumers more than \$300 billion through 2030.

So how does the Sierra Club's Energy Policy compare with Obama's? Overall the president is fairly close to the Sierra Club's position on the need to move towards more sustainable energy choices. The Sierra Club demands a higher standard for green energy than the president, but he has many more constituencies to deal with. For the moment, he keeps natural gas, "clean coal" and nuclear energy in his portfolio of transitional energies on the way to greener choices. The Sierra Club's plan points out that at least at this point there is no such thing as "clean coal." His emphasis on improving energy efficiency is very much in line with the Sierra Club position.

### Mitt Romney's energy plan

Compared to the Sierra Club, Republican presidential candidate Mitt Romney has a very different energy policy. He sees energy production as primarily a national security and job creation issue. He wants to streamline approval processes for extracting energy and says "all permits and approvals for exploration and development should be issued according to fixed timelines with the availability of fast-track processes."



MARK SCHMERLING/SCHMERLINGDOCUMENTARY.COM

A coal-fired power plant near Carmichaels, Pa., polluted the air and the Monongahela River with mercury, cadmium, selenium, lead. The facility towers over the Saint George Serbian Orthodox Church, front left, and was built after the church.

He says "the Clean Air Act, Clean Water Act and other environmental laws need to be overhauled." He says "the Clean Air Act was passed to protect against pollutants that pose dangers to human health and was not intended to control CO2 emissions, and is poorly tailored to that purpose." He says President Obama is trying "to fit that particular square peg into the round hole of the Clean Air Act to essentially achieve the effect of cap-and-trade without congressional approval." The Supreme Court disagrees with that as it ruled in 2007 that part of the mandate of the Clean Air Act allows the EPA to regulate CO2.

Romney wants to increase our domestic supply of oil which would put downward pressure on energy prices. But according to the Energy Information Administration, the supply of oil and gasoline is higher today than it was three years ago, when the national average price for a gallon of gasoline was just \$1.90. Meanwhile, due in part a slower economy and more efficient cars the demand for oil in the U.S. is at its lowest level since April 1997. Besides that the president of the United States doesn't set the price of oil and gasoline, the global market does. Rumors of war in the Middle East, increased use of oil by China and other factors including speculators are pushing up oil prices.

Romney is for quick approval of the Keystone XL Pipeline which would bring tar sands oil from Canada through the Midwest to the gulf coast. He says that Obama has "an unhealthy green jobs obsession" and is "in thrall with the environmentalist lobby and its dogmas." He asserts that the president has waged war against oil and coal while touting the creation of green

jobs and says that "wind and solar remain sharply uncompetitive on their own with conventional resources such as oil and natural gas in most applications." He says "we have wasted time and money by steering investment towards particular politically favored approaches."

Recently, Mr. Romney has come out in favor of running mate. Paul Ryan's new Republican budget proposal eliminating federal subsidies and tax breaks for alternative energy firms and would slash funding for energy research.

Romney says "the United States is blessed with a cornucopia of carbon-based energy resources and developing them has been a pathway to prosperity for the nation in the past and offers similar promise for the future." He says "he will permit drilling wherever it can be done safely including the Gulf of Mexico, both the Atlantic and Pacific Outer Continental Shelves, Western lands, the Arctic National Wildlife Refuge and off the Alaska coast." This will include both conventional reserves and shale oil deposits. There is no indication on his website as to a position on any demand side measures to increase energy efficiency. There is no mention on his website of climate change, but in October 2011 during a forum in Pennsylvania, he expressed the view that "we don't know what's causing climate change and the idea of spending trillions and trillions of dollars to try and reduce CO2 emissions is not the right course for us" ([www.lunberg.com](http://www.lunberg.com)).

*Michael Stevenson is program chair for the Angeles Chapter's San Fernando Valley Sierra Club Group. This article appeared in the June issue of Vall-E-Vents newsletter.*



# ter Political Endorsements

## Hot seats

### State Assembly

#### Betsy Butler

##### Assembly District 50



Despite her relatively short tenure in the California State legislature, Betsy Butler has proven herself to be a real leader on environmental issues in the State Assembly and the Sierra Club strongly supports her re-election.

Butler was able to take her long-time involvement in environmental affairs to quickly work on critical legislation that will have a significant impact on the future of California. Her commitment to working on environmental issues spans her entire career, which includes the time she spent working for the California League of Conservation Voters and the Environmental Defense Fund. During this time, she helped create communities of support for strategic environmental movements, including carbon emission standard changes, water conservation and habitat protection policies.

In her first year in office, she was the author of bills such as the Toxin-Free Infants and Toddler Act, signed by Governor Jerry Brown in October 2011, which bans the use of Bisphenol-A (BPA) in baby bottles and sippy cups. By enacting this important new law, California has taken a vital first step to protect babies and toddlers from the harmful health effects of BPA. In addition to the ban on BPA, one of the other bills she authored and was signed into law by the Governor in her first year in office included a bill to expand electric vehicle infrastructure.

In 2012, she continued to work on critical legislation advocating for our the environment and the working men and women of California. Earlier this year, she introduced the Farm Worker Safety Act of 2012, which will ensure our farm workers have access to shade and clean drinking water.

#### Jimmy Gomez

##### 51st Assembly District



The 51st Assembly District has been moved in the redistricting plan. Much of it now resides in Assembly District 62, which is represented by Steven Bradford. The new 51st includes Angeleno Heights, Chinatown, Cypress Park, East L.A., Echo Park, Eagle Rock, El Sereno, Elysian Park, Glassell Park, Highland Park, City Terrace, University Hills (Cal State L.A.), Olvera Street and Dodger Stadium.

Jimmy Gomez received a bachelor's degree in Political Science from UCLA and a master's in public policy from Harvard. During his time at UCLA, he served as a representative for Mike Feuer, working with community groups on protecting remaining open space. While at Harvard, Gomez worked for then Congresswoman Hilda Solis, current Secretary of Labor in the Obama administration. Currently Gomez is political director of the United Nurses Assn. and has been endorsed by the California Labor Federation.

Gomez anticipates that open space, air quality, and toxics and contaminated land will be the three main environmental issues he will face as he represents his district in the state Legislature. He does not believe that CEQA is a barrier to economic growth. Instead he argues that "CEQA is one of those special sets of tools and laws that require and allow public input for land-use decisions. It is critical to the cause of environmental justice, helping us ensure that high-impact industries and toxics are not concentrated in communities of color or low-income communities."

Gomez supports incentives for clean technologies and supports smart-growth practices: in-fill, transit-friendly development. He is opposed to the extension of the 710 Freeway because it will create more air pollution. He also opposes the water bond that will be on the November 2012 or later ballot because he perceives it as containing large giveaways to corporate special interests and not paying enough attention to water quality.

#### Sharon Quirk-Silva

##### Assembly District 65



Sharon Quirk-Silva, candidate for California State Assembly representing the 65th Assembly District, currently serves as mayor of Fullerton. She has been elected twice to the Fullerton City Council (2004 and 2008), and both times was endorsed by the Sierra Club. In 2011, she was recognized as an Environmental Hero by the Angeles Chapter Political Committee for her votes against the development of Coyote Hills and her efforts to preserve the 500 acres of North Orange County's last open space in Fullerton. She chaired the Sustainable Communities Committee of the Southern California Association of Governments, where she led a successful process to develop a regional transportation

plan. Quirk-Silva has worked toward development of regional/citywide mass transportation and notes that Fullerton is the first city in Orange County to have a bike-sharing program. She has also supported efforts toward neighborhood preservation and preserving the integrity of historical buildings in Fullerton. She looks forward to working on issues related to sustainable communities when she goes to work in Sacramento.

#### Al Muratsuchi

##### Assembly District 66



Al Muratsuchi is running for the Assembly in a new district that includes most of the South Bay and Palos Verdes Peninsula. Muratsuchi supports Sierra Club positions on important environmental issues, including renewable energy, water supply, and clean oceans. For more information, see his Website at alforassembly.com.

"As a surfer with a deep passion for the ocean since my childhood days (and as a former Torrance Environmental Quality and Energy Conservation Commissioner), I will fight to advance the goals of clean coastal waters and beaches, healthy ocean and coastal habitats, and sustainable economic development of coastal communities," he says.

### State Senate

#### Fran Pavley

##### 27th State Senate District



The Sierra Club again has endorsed the re-election of State Senator Fran Pavley, a world leader in energy conservation who has earned international acclaim as the author of AB 1493, the landmark California emissions reduction law, (often known as the "Pavley Law"), which forms the basis for increased fuel efficiency standards in the U.S and Canada.

Pavley also co-authored AB 32, the "greenhouse gas law", plus legislation designed to reduce public exposure to dangerous toxics such as lead, mercury, and cadmium, and has authored an environmental education initiative to bring environmental principles into California textbooks.

As chair of the State Senate's Natural Resources and Water Committee, Pavley has played the lead role in obtaining the funds needed to purchase Ahmanson Ranch and King Gillette Ranch, the latter being the location of the new visitor center for the Santa Monica Mountains National Recreation Area. She was also instrumental in the purchases of Happy Camp, Towsley Canyon, and the Backbone Trail, and is a strong advocate for cleanup of the Santa Susana Field Lab.

The district includes Malibu and parts of Ventura County.

### Congress

#### Lee Rogers

##### 25th Congressional District



Lee Rogers is a podiatrist who specializes in preventing amputations in diabetes. He is a national health expert and lectures all over the world on topics related to diabetes, complications from the disease and health policy. Lee lives in Simi Valley with his wife and two daughters.

"I'm running for Congress because we're not being represented in Washington," Lee says. "While filling their campaign coffers with special interest money, Congress has irresponsibly spent our money and racked up our country's largest debt. This has got to stop! We need a Congress that responds to the people. My opponent, Congressman Buck McKeon, has ignored the needs of people here in the district. My top priorities will be addressing these needs, including major actions needed to keep our environment clean and safe."

California's 25th District, which includes Santa Clarita and Palmdale, is facing three major environmental issues as a result of federal contracts or on federal land that are being ignored by incumbent McKeon. First, contamination from a munitions manufacturing plant operated by Whittaker-Bermite is in the center of Santa Clarita. This plant has polluted the groundwater with perchlorate and the plume of contamination is spreading. The topsoil is contaminated with volatile organic compounds. Clean up is underway, but slowly.

Second, the Santa Susana Field Laboratory operated by Rocketdyne now owned by Boeing is located in the Simi Hills. Contamination by Rocketdyne and a reactor meltdown has left radioactive pollution and other chemicals on the site. The federal government and Boeing are supposed to clean up the site, however Boeing is challenging their responsibility in the cleanup. McKeon is a top recipient of campaign contributions from Boeing

and unlikely to bring in federal help to force Boeing to take responsibility.

Lee Rogers will be a champion for these environmental issues, a stark contrast to his opponent.

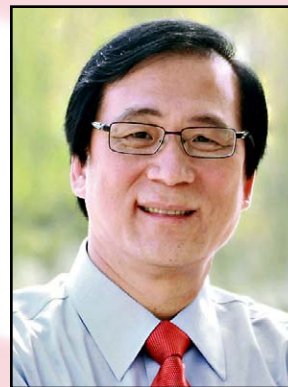
#### Brad Sherman vs. Howard Berman

##### 30th Congressional District

The Chapter is making no endorsement in this race. The campaign for this San Fernando Valley district has been fierce as two politicians who have both been endorsed by the Chapter in the past are now vying for a single congressional seat. Both have had good environmental records during their terms in Congress.

#### Sukhee Kang

##### 45th Congressional District



Sukhee Kang is the current mayor of Irvine, who has been elected to this post twice. Kang previously served on the Irvine City Council. He was endorsed by the Sierra Club in all three elections and has supported pro-environmental actions in the city, including long-term sustainability of the city's shuttle system, development of an inventory of the city's greenhouse gas emissions and energy footprint, and promoting environmentally-friendly construction. Over the past two years, Kang has been meeting with the FBI as they take over an area near the Great Park that has a shooting range and has asked them to keep the surrounding land in a natural state. Kang is a strong supporter of alternative, renewable energy, and drives a fuel cell demo car that is loaned to the city of Irvine. Recently, he led the successful effort for Irvine to go on record with the Nuclear Regulatory Commission to ensure that San Onofre Nuclear Generating Station is completely safe before allowing it to be restarted. His successful efforts to build a coalition of all council members on this issue were noteworthy. Kang brings a pragmatic approach to environmental concern, and would be a strong advocate for the Sierra Club's mission if elected to represent the district that includes Irvine.

Kang has been meeting with the FBI as they take over an area near the Great Park that has a shooting range and has asked them to keep the surrounding land in a natural state. Kang is a strong supporter of alternative, renewable energy, and drives a fuel cell demo car that is loaned to the city of Irvine. Recently, he led the successful effort for Irvine to go on record with the Nuclear Regulatory Commission to ensure that San Onofre Nuclear Generating Station is completely safe before allowing it to be restarted. His successful efforts to build a coalition of all council members on this issue were noteworthy. Kang brings a pragmatic approach to environmental concern, and would be a strong advocate for the Sierra Club's mission if elected to represent the district that includes Irvine.

#### Loretta Sanchez

##### 46th Congressional District



Congresswoman Loretta Sanchez, candidate for re-election to Congress in the 46th District, has been a strong advocate of environmental issues since she was first elected to the House of Representatives in 1995. Throughout her legislative career, Sanchez has worked with colleagues from both sides of the aisle to craft legislation that is environmentally friendly and calls on companies to demonstrate accountability for their business practices. She has co-sponsored legislation that protects some of our most vulnerable species. Sanchez is an original co-sponsor of H.R.4122, the Big Cats and Public Safety Protection Act, and she has been instrumental in bringing national attention to the issue. She will continue to fight in Congress and she will continue to confront any administration, regardless of party lines, to ensure that priceless lands like the Grand Canyon are protected from toxics due to mining. Sanchez will continue to build on her environmental record by supporting legislation that will improve emission standards, reduce our dependence on foreign oil, improve water quality, and clean up toxic waste sites.

#### Alan Lowenthal

##### 47th Congressional District



Alan Lowenthal is a candidate for the House of Representatives in the newly drawn 47th District, which encompasses southern coastal Los Angeles County and a portion of Orange County. He is a dedicated spokesman for environmental issues. Lowenthal has been a champion for the environment for more than 20 years, first as a Long Beach city councilman, then as a California Assembly member, and now as a state senator. Ever since he authored legislation that covered the petroleum coke piles at the Port of Long Beach (AB 1775) that reduced harmful airborne particulate matter, Lowenthal has been fighting relentlessly for a greener port, cleaner air and water, and a protected coastline for all Californians.

As a state senator, he had a 71% rating on the Sierra Club California 2011 scorecard, an 88% on the California League of Conservation Voters scorecard, and a 96% lifetime rating. The Chapter has a long history of support for Lowenthal, and has endorsed him in all of his previous campaigns beginning in 1992. He is a past winner of the Angeles Chapter Brian Sher Award, and the Political Committee's 2012 Political Leadership Award. Lowenthal is focused on proving that environmental stewardship and economic development are not mutually exclusive, and will provide a credible voice for Sierra Club concerns in Washington, D.C.





# Angeles Chapter Adventure Travel Calendar

These fund-raising trips are open to Sierra Club members and non-members alike. Each one presents a value for participants and raises funds for the Angeles Chapter of the Sierra Club. For more details and how to sign up, go online to [angeles.sierraclub.org/get\\_outdoors/travel\\_adventure](http://angeles.sierraclub.org/get_outdoors/travel_adventure).

## Explore Patagonia region of Argentina and Chile

Feb. 2-18, 2013

O-rated: Explore the wilds of Patagonia on this 17-day active adventure that starts in Buenos Aires and then flies to southern Argentina and across into Chile. Participants spend five days hiking in spectacular glaciated landscape of Torres del Paine National Park. In Argentina, travel by boat on Lago Argentino to view the massive terminus of the Perito Moreno Glacier. Side trip visits a local Patagonia Estancia (ranch) on the pampas. Then embark on three days of hiking to explore the beautiful lagunas (lakes) around El Chalten and hike to Laguna Torre to get a view of the famous Mt. Fitzroy and Glacier Grande, weather permitting. Condors, herds of rheas and guanacos, as well as many other animals may be seen during this trip. Optional side trip to spectacular Iguazu Falls also offered. Price includes hotels and lodges, private transportation, most meals, airport transfers, catamaran tour, most activities. Domestic and international airfare is extra; group airfare rates available. Trip cost per person for Sierra Club members is \$3,995 before Sept. 15; \$4,095 after Sept. 15; nonmembers add \$100. Sponsored by the Angeles Chapter. Leaders Fred Dong ([madelinesdad@earthlink.net](mailto:madelinesdad@earthlink.net)) and Kath Giel ([bear980@gmail.com](mailto:bear980@gmail.com)).

## Yellowstone National Park in Winter

Feb. 15-22, 2013

C/O-rated: Watch for wolves, bison, elk, mountain goats, arctic birds and swans during Yellowstone at its winter best. Enjoy wildlife viewing and photography as well as the icy air that enhances geyser scenes at Mammoth Hot Springs, Norris, Old Faithful and West Thumb geyser fields. Spend five days with a Yellowstone Association tour guide who knows where to go to see wildlife and guide participants on walks, snowshoe and cross-country skiing activities around geyser fields. Bonus: Visit the dinosaur exhibit at Museum of the Rockies in Bozeman, Montana. Trip includes travel by snow coach, hotel stays, ground transportation, guides two days of cross-country ski options, daily breakfast, most lunches and one dinner. Group size is limited to 10. Trip cost per person is \$2,210 for Sierra Club members, \$2,235 for nonmembers; \$500 deposit holds a spot, with the balance due by Sept. 1. Sponsored by Angeles Chapter, Verdugo Hills Group. For information on itinerary, cancellation policy, application, contact leaders Judy Anderson ([anderson-judith@att.net](mailto:anderson-judith@att.net)) and Carol Henning ([carolhen@sbcglobal.net](mailto:carolhen@sbcglobal.net)).

## Thailand Cultural & Wildlife Tour

March 14-April 2, 2013

O-rated: See the cultural gems and wildlife of Thailand on sightseeing and easy hiking adventures. Itinerary includes three days in Bangkok visiting the Grand Palace and Wat Phra Kaew, reclining Buddha in Wat Pho temple, boat trip in Bangkok canals, Thai theater performance, National Museum, Royal Barge Museum and more. Other highlights include stops at Sukhothai; the historic capital at Ayutthaya; Khao Yai National Park for wildlife viewing; temple complex of Si Satchanalai; birding at Doi Inthanon; Chiang Mai; Chiang Rai and more. Optional add-on tour to Phuket. Price includes hotel, bus transportation, most meals, airport transfers, most hikes or walks, and more. Domestic and international airfare is extra (group airfare available for additional price). Sierra Club members \$1,995; non-members add \$100. Sponsored by the Angeles Chapter. Contact leaders Fred Dong (818) 545-3878; [madelinesdad@earthlink.net](mailto:madelinesdad@earthlink.net), Stephanie Gross, Maew Suchin

## Arches and Canyonlands

April 28-May 5, 2013

O-rated: Come with us on an 8-day, 7-night fly-and-drive excursion to eastern Utah to explore and enjoy two national parks: Arches, with more than 2,000 arches ranging in size from a few feet to several hundred feet, and Canyonlands National Park, with deep canyons of the Green and Colorado rivers. Fly to Grand Junction, Colo., then drive in vans to Moab, Utah. Moab will be the base with day trips into national parks. Trip cost is \$1,250 for Sierra Club members;



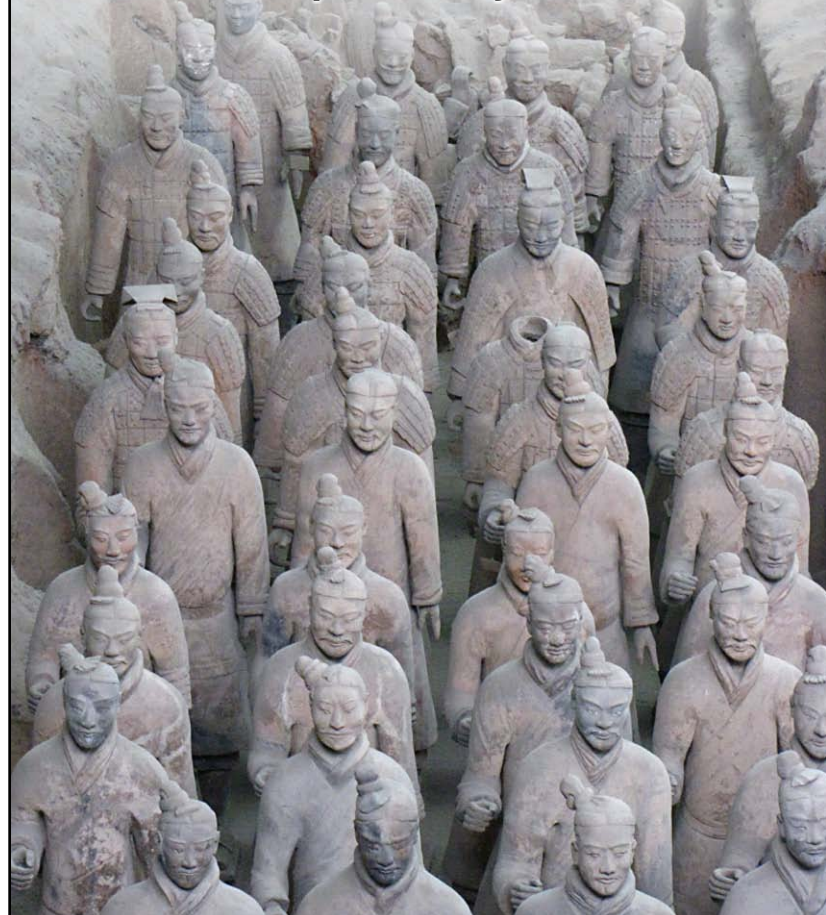
ANN CADEZ

Above the Lago de San Pablo in Ecuador's high country.

C/O rated: Come explore on a 13-day trip based at three eco-lodge reserves and one lodge in the Amazon jungle. The first lodge is just 20 miles from the Ecuadorian capital of Quito, staying in an 18th-century Spanish Hacienda at 10,000 feet in elevation. Then spend a few nights at a lodge in the Hummingbird Sanctuary high in the cloud forest and another in the tropical rainforest. Days will be spent trekking to sacred waterfalls; some trails follow in the same footsteps as the pre-Incans. Learn about local culture, volcanology, anthropology, see incredible wildlife, exotic birds, tropical plants and flowers. Tours will also include the Quito Indian Market and Cotopaxi Volcano National Park. Then it's on to the Amazon River and four days at a rainforest. Canoe the Rio Napo, take guided hikes, view wildlife, go piranha fishing and more. The price is \$2,985 for Sierra Club members, \$3,085 for non-members. It includes in-country flight to the Amazon, canoe transport, lodges (double occupancy; some triples), ground transport, all meals, guides. International airfare is extra; group rates available. Sponsored by Orange County Sierra Singles. For itinerary, application, cancellation policy, contact leader Donna Specht [(714) 963-6345, [donnaSpecht@juno.com](mailto:donnaSpecht@juno.com)] and co-leader Ana Cadez ([ana.cadez@bt-store.com](mailto:ana.cadez@bt-store.com))

## China Highlights & Yangtze River

April 20-May 4



FRED DONG

China's famed terra-cotta warriors are a popular tourist stop.

O-rated: You are invited on a well-paced journey to China to explore Tiananmen Square and Forbidden City where the Emperors of the Ming and Qing Dynasties lived. Participants will climb the Great Wall, take a boat cruise on the Grand Canal of Hangzhou and visit Suzhou's silk factory. Set sail on the Yangtze River and enjoy fantastic vistas of deep and quiet gorges and magnificent peaks that seem carved by axes. Take a shore excursion to the Shennong Stream, where you may see the ancient roads and even some golden-haired monkeys. Also you'll visit Xi'an's most important archeological site, where thousands of life-size terra-cotta warriors have been guarding the Emperor's burial site for over 2,000 years. Price is \$2,998 for Sierra Club members, \$3,195 for non-members. It includes international round-trip air transportation from LAX, three domestic flights within China, seven deluxe hotels (double occupancy), 37 meals, admission fees, \$140 in gratuities and guides. Airline taxes/fuel charge of \$480 and China visa are not included and are subject to change. Sponsored by the Angeles Chapter. Contact leader Andrea Lim by e-mail with subject line "China 2013" at [andrealim94@yahoo.com](mailto:andrealim94@yahoo.com) or call (818) 249-8584. Co-leader: Salud Salinda.

\$1,350 for non-members. It includes lodging (double occupancy) and land transportation to and from Grand Junction and around Moab. All park admissions are also included. Breakfasts and three lunches will be provided. All other meals and airfare to and from Grand Junction are not included. For copies of the itinerary and

application forms, contact Mike Sappingfield ([mikesapp@cox.net](mailto:mikesapp@cox.net)). \$500 deposit will hold a reservation with the remainder due by March 1, 2013. Sponsored by the Sierra Sage Group and the Angeles Chapter. Leaders: Mike Sappingfield and Sylvia Stevenson.

## Seattle Getaway

July 18-20, 2013

O-rated: Join us for a 3-day, 2-night exploration of the wonders of the city of Seattle, Mt. Rainier and Mt. St. Helens. This can be taken in conjunction with the July 20-27 Olympic National Park and Victoria Excursion or as a separate trip. Special Offer: Sierra Club members who enroll in both the Seattle Getaway and the Olympic National Park and Victoria Excursion will qualify for a \$50 discount for the Seattle Getaway (i.e., trip cost will be \$345). Cost is \$395 for Sierra Club members, \$425 for non-members. Lodging for 2 nights, transportation while on the getaway, admissions and breakfasts are included. Airfare to and from Seattle and most meals are not included. For information, contact Mike Sappingfield by phone 949-768-3610 or e-mail [mikesapp@cox.net](mailto:mikesapp@cox.net). Sponsored by Sierra Singles, Sierra Sage Group and the Angeles Chapter. Leaders: Mary Morales, Mike & Patty Sappingfield

## Olympic National Park and Victoria Excursion

July 20-27

O-rated: Join us for an 8-day, 7-night excursion to explore the wonders of the Pacific Northwest's fabulous Olympic National Park and a ferry ride to Victoria, Canada. Sample the delights of the city and explore Bouchart Gardens before returning to Seattle via a ferry winding through the San Juan Islands. Lodging, admissions, and transportation while on the trip included. Airfare to and from Seattle and most meals not included. Cost for the trip is \$1,195 for Sierra Club members; \$1,250 for non-members. To reserve a spot and for more information, call Mike Sappingfield at 949-768-3610 or e-mail [mikesapp@cox.net](mailto:mikesapp@cox.net). Sponsored by Sierra Singles, Sierra Sage Group and the Angeles Chapter. Leaders: Mary Morales, Mike & Patty Sappingfield

## Iceland, Hiking and Exploring an Extraordinary Island

August 17-28, 2013

C/O rated: This 11-day tour explores the land of Vikings, fire and ice, which is surprisingly green for much of the year. Visit the capital Reykjavik in southwest, Akureyri in far north, travel south through the remote, barren interior to the brilliant-blue hot spring Hveravellir, drive along the roots of volcano Eyafjallajokull and wander further southeast to view majestic glaciers from the Vatnajokull icecap. Among floating icebergs, participants will board a boat in the glacier lagoon Jokulsarion and also take a relaxing swim in the cobalt colored water of the Blue Lagoon south of Reykjavik. Hike and explore towering cliffs, remote fjords, majestic waterfalls, volcanic craters, geysers, boiling mud pits and more. Optional extension to Greenland is also offered. The price is \$3,190 for Sierra Club members (\$3,290 for non-members) and includes hotel accommodations (double occupancy), private charter transport, 24 meals, guides, glacier lagoon boat ride. International airfare is extra; group rates available. Sponsored by Orange County Sierra Singles and the Angeles Chapter. For complete itinerary, application, cancellation policy, contact leader Donna Specht (714) 963-6345, [donnaSpecht@juno.com](mailto:donnaSpecht@juno.com) and co-leader Ana Cadez ([ana.cadez@bt-store.com](mailto:ana.cadez@bt-store.com))

## China Silk Road and Gobi Desert

Oct. 5-19, 2013

O-rated: See seldom visited sights on the China Silk Road and the Gobi Desert. Visit mountains, deserts, living historic sites, rare wildlife and abandoned cities on this adventure where few Western tourists travel. Highlights include historic Urumqi's Great Bazaar, historic buildings, Tian Shan Mountains and lakes. In Turpan, see ruins of ancient Jiaohe city, ancient aqueduct system, beautiful Imin Minaret, old city, Tuyu Valley, and more. In Liuyuan, visit Bizaklik Thousand Buddha Grottoes, Flaming Mountains, Gaochang ancient city ruins, and Astana Tombs. In historic Dunhuang, visit old city, Mogao Thousand Buddha Caves, White Horse Pagoda, Crescent Moon Springs, and see the Gobi Desert. In Jiayuan, visit western end of Great Wall, and nearby mountains. The trip will go to the end of the Silk Road, Xian, to see famous Terra Cotta Warriors. Optional Beijing tour available. Cost: \$3,095 until Feb. 28, (March 1 and later, \$3,195) includes round-trip airfare from LAX to Beijing, all transportation, four-star hotels, nearly all meals, admissions, guides. Taxes and visa fees are extra. Sponsored by the Angeles Chapter. For information on how to sign up, contact leader Bruce Hale at (818) 957-1936. Co-Leader: Fred Dong.



# Calendar

Get outdoors! The online Schedule of Activities at the Angeles Chapter website (angeles.sierraclub.org) lists hundreds of hikes, backpacks, tours, bicycle rides, ski and snowshoe trips and more. Enter a date range online to find outings in your area and beyond. Here's a sampling of upcoming events. Details can be found online.

## Saturday, September 8

**9 a.m. O: Mt. Waterman from Buckhorn.** Wilderness Adventures Section: Moderately paced, 7 mi rt, 1300' gain. Meet 9 am La Canada rideshare point. Leader: Rosemary Campbell 818-344-6869 hiker.rosemary@sbcglobal.net; Maureen Conn

**9:55 a.m. O: Griffith Park Walk/Observatory Tour.** Sierra Singles: Climb a mountain (600 feet of gain, 3 to 4 miles round-trip) then explore the observatory. Sandra Tapia 818-365-8789 sltderamas64@yahoo.com. Elaine Ayala 310-399-5372 elaineayala@verizon.net

## Sunday, September 9

**9 a.m. O: WTC Introductory Hike: Mt. Wilson via Manzanita Ridge.** Wilderness Training Course: Invigorating conditioning hike at a moderate pace. 10-14 mile round-trip, 4000 feet of gain. Leaders will provide an overview of the Wilderness Travel Course (WTC), which begins January 13. Meet 9 am at trailhead. Mira Monte Ave and Mt Wilson Trail Drive. Roland Kelly 310-470-9632 rkelly@jefferies.com. David Meltzer 310-913-1230 dwm@crpgm.com

## Monday, September 10

**6:30 p.m. 20s30s40s Night in Costa Mesa.** Orange County Singles: Come celebrate with great food and a great slideshow presentation of our adventures; newcomers welcome. Meet 6:30 p.m. for social hour, 7 p.m. for program at Costa Mesa Neighborhood Community Center. Charles Geller 714-292-2352 eduright@aol.com; Donna Specht 714-963-6345, donnaspecht@juno.com

**7:30 p.m. Monthly Camera Committee Meeting: Members Show.** Camera Committee: Members and guests will display prints, slides, and other media. Meet at Falcia Mahood Center, 11338 Santa Monica Blvd at Corinth, West LA. Bill Betts, 310-372-3595, webpub@mindspring.com.

## Tuesday September 11

**7:30 p.m. Orange County Monthly Meeting: WTC Preview.** Orange County Group: Wilderness Training Course preview with Cheryl McMurray and Kim Breul. Meet at REI in the Tustin Marketplace. Bob Siebert, 714-997-0190, eesolar@sbcglobal.net



TOM POLITO/CAMERA COMMITTEE

La Jolla Valley skirts the western end of the Backbone Trail in Point Mugu State Park. Join us for the Backbone Trail Festival in fall.

## Thursday, September 13

**7 p.m. Thoreau, Muir, and Brower: Communicating the Wilderness Experience to Promote Conservation.** West Los Angeles Group: Brian Treanor, director of environmental studies at Loyola Marymount University, presents this conservation program about the importance of inspiring people to value natural places. Culver City Veterans Memorial Auditorium, Uruapan Room, 4117 Overland Ave. David Haake, 310-237-3447, dhaake@ucla.edu

## Saturday, September 15

**8 a.m. O: Malaga Cove/Douglas Trail on the PV Peninsula.** Palos Verdes Group: Try out a new trail overlooking Bluff Cove with fantastic views; 6 miles, 600 feet of gain. Meet at the Malaga Cove Plaza fountain. Jacques Monier 310-320-1249 jmonier@pacbell.net; Barry Bonnicksen 310-519-0778 bonnicks@pacbell.net

**8:30 a.m. O: Laurel Canyon and Stagecoach Laurel in OC.** Sierra Sage: 6 mile loop with 1,000 feet of gain up Laurel Canyon to Serrano Ridge then on to the newly-opened Stagecoach Laurel trail. Meet at Laguna Coast Wilderness Visitors Center. Chester Stipe 949-363-1142 chetbar@cox.net. Michael Metcalf 949-492-6277 msmetcalf@cox.net

## Saturday, September 18

**8:30 a.m. O: Baldwin Hills Ramble.** Santa Monica Mountains Task Force: Moderate 6-7 mile round-trip hike over urban trails. Meet in Hahn Recreation Area Park., Fran Denny 310-838-2354 frandnns@yahoo.com; Wlodek Proskurowski, 310-202-0331, proskuro@usc.edu

## Saturday, September 22

**8 a.m. O: Thunder (8587'), Telegraph (8985') and Timber (8303') Peaks.** Sierra Sage of South Orange County: Meet at the Mt. Baldy Ski Lift parking lot to hike the "3 Ts". No beginners. Todd Clark, 714-803-0195, clarkta@hotmail.com; Sylvie Cote, 949-547-2998 mlsylvie@hotmail.com

## Wednesday, September 26

**7 p.m. Monthly Meeting: Madagascar Experience.** Verdugo Hills Group: Sierra Club leader Joe Young brings pictures and stories from Madagascar. Meet in the community room of Montrose Citibank (2350 Honolulu Ave, Montrose). Delphine Trowbridge 818-558-7722 dtrowbridge36@gmail.com

## Friday, Sept. 28 - 30

**HPS Fall Festival: Hiking, Pot Luck, Camping.** Hundred Peaks Section: Fall Festival in the San Gabriel Mountains for hiking and climbing opportunities followed by an evening potluck party and campfire. Camp in the Bandito Campground; \$10 donation covers camping Friday and Saturday nights. Wayne Vollaire 909-327-6825 avollaire1@verizon.net; Ted Lubeshkoff 626-445-5707 jeannstar@sbcglobal.net

**9 a.m. O: Santa Ana River to the Beach.** Orange County Group: 7 miles virtually no elevation gain through Fairview Park to the Talbert Nature Preserve and on to Banning Ranch and the beach. Meet at Fairview Park, Costa Mesa. Patricia Barnes, 714-827-9744, mezzohiker@msn.com

**5:30 p.m. O: Modjeska Canyon.** Orange County Group Outing: About 8 miles and 1900 feet of gain under the almost full moon. Meet at the north Orange County rideshare point Julie Garner, 714-335-1579, avtrix@sbcglobal.net; Jay Matchett, 714-730-7730, sierra\_jay@juno.com

**6 p.m. O: Full Moon Hike to Trippet Ranch, Musch Trail, Eagle Rock Loop.** Sierra Singles: Easy paced 8 mile hike with 1,200 feet of gain hike in Topanga State Park. Meet outside Trippet Ranch parking lot. Linda Hillman, 818-990-5124, lghillman@earthlink.net; Marshall Ratinoff, 310-446-1806, lataxman@att.net. Francine Oschin, 818-907-1130, foschin@sbcglobal.net

## Saturdays in October

**8:30 a.m. O: Santa Monica Mountains Trail Work.** Santa Monica Mountains Task Force: Volunteers help build and maintain trails. Tools and instructions provided. For meeting time/place, contact Ronald Webster, 310-559-3126; Noel Bell, 310-398-0774, noelbell@verizon.net; John Russell Marshall, 951-898-4632, russmarshall13@gmail.com

## Wednesday, October 3

**7 p.m. The Environmental Benefits and Impacts of Siting Wind and Solar Energy Projects in California's Deserts.** Pasadena Group: Sarah Friedman of the Sierra Club's national field office in Los Angeles presents this program. Newcomers always welcome. Meet at Eaton Canyon Nature Center. Elizabeth Pomeroy, 626-791-7660, ewpomeroy@sbcglobal.net

## Sunday, October 7

**9:30 a.m. O: Franklin Canyon Hike.** Sierra Singles: Easy 6-mile round trip hike with 800 feet of gain. Meet in Ranch/Hastain Trail parking lot. Francine Oschin, 818-907-1130, foschin@sbcglobal.net; Margaret Belknap, 310-305-9391, avec@mindspring.com

**8:30 a.m. O: Sepulveda Basin Beginners Walk.** Sierra Singles: Walk 4.5 to 5.5 miles round-trip at slow to moderate pace on walking trail. Newcomers welcome. Sandra Tapia, 818-365-8789, sltderamas64@yahoo.com; Elaine Ayala, 310-399-5372, elaineayala@verizon.net

## Saturday, October 13

**8:45 a.m. Monrovia Canyon Park Family Walk to Waterfall.** Verdugo Hills Group: Hike to a waterfall in the San Gabriel Mountains. 3 miles round-trip, 720 feet of gain. Suitable for families. Meet 8:45 at the Joslyn Adult Center in Burbank or 9:30 am at Bill Cull Trail at Monrovia Canyon Park. Annette Kargodorian 818-956-5201 akar214@aol.com; Delphine Trowbridge 818-558-7722 dtrowbridge@gmail.com

## Saturday, October 20

**8 a.m. O: Santa Rosa Plateau.** Orange County Group: 8 miles, 800 feet of gain hike in the grasslands and oak lands of this preserve. Meet 8 a.m. at north Orange County rideshare or 9:15 am Santa Rosa Preserve visitor's center. Julie Garner 714-335-1579 avtrix@sbcglobal.net; Jay Matchett 714-730-7730 sierra\_jay@juno.com

## Saturday, October 20 - 21

**Harwood Lodge: Fall Work Party.** Come have fun, meet new people, all while working on lodge repairs/maintenance. Receive lodging, food and drink, pass to come back for a free weekend (\$12-\$15 value). Graeme Whitaker 909-861-2931

## Friday October 26 - 28

**7:30 a.m. Wilderness First Aid Course at Harwood Lodge.** Wilderness First Aid Course runs from 7:30 am Friday to 5 p.m. Sunday. Fee includes lodging, meals and practice first aid kit. Proof of CPR within previous 4 yrs required to enroll. \$210 per person. Steve Schuster 714-526-9308 steve.n.wfac2@sbcglobal.net

## Saturday, October 27

**9 a.m. O: Gold Creek to Big Tujunga Canyon.** Wilderness Adventures Section: Moderate 5-mile hike with initial gain of 1200 feet before loss of 1700 feet. Meet in Big Tujunga Canyon and car shuttle to Gold Creek; e-mail/call for details. Homer Tom 818-954-4721 hikerhomie@gmail.com. Mark Fleming 626-359-4157 mflemi@earthlink.net

## Friday, November 2 - 4

**O: Sturtevant's Camp-Big Santa Anita Canyon.** Great Hiking Era Tribute Weekend Wilderness Adventures Section: 9 mile hike round-trip with 1800 feet of gain. Travel back in time to Southern California's Great Hiking Era (1890-1938), lodge at Sturtevant's Camp founded 1893. Cabin accommodations, hot showers, all meals. \$115 for Sierra Club members; \$123 non-members. Peter Ireland 818-996-8846 naturetrust@earthlink.net; Frances Penn 714-434-2754 fpenn@rutan.com

## November and December

First 3 Saturdays & Sundays in November, first weekend in December at 9 a.m.

**O: 15th Annual Backbone Trail Festival.** Santa Monica Mountains Task Force: The Sierra Club will lead a hike on the iconic 70-mile Santa Monica Mountains Backbone Trail to introduce hikers and newcomers to the route. 9 a.m., Saturday, Nov. 3,

**O: Mishe Mokwa Trail to Six Peaks,** meet at Mishe Mokwa trailhead parking lot 2 miles past ranger station. Robert Cody, 310-410-9172, bcodyman@aol.com; Marlen Mertz, 310-391-6028, mbmertz@aol.com; Wayne Vollaire, 909-595-5855, avollaire1@verizon.net

# Classifieds

## Personals

**Retired quiet GBM** good shape wants to meet affectionate topman. Like nature, music & arts. MEL 213-243-9882

**SWM, 63, 5' 9" ROCK CLIMBER** x-country skier, likes classical music, sincerity. 310-558-1941

**WHAT'S YOUR LEGACY?** When writing your will, please consider the Angeles Chapter Foundation. We can help you demonstrate your commitment to John Muir's ideals. angeleschapterfoundation.org

## Travel / Trek

**COPPER CANYON, PERU, COSTA RICA.** Galapagos, Patagonia, Bhutan, Yucatan and more. Call for free newsletter. The California Native. 310-642-1140. www.calnative.com

## Professional Services

**COMPUTER HELP \$45/HOUR.** Get started, learn more, or solve problems. Good with beginners & all ages. Emergencies OK. Call Chris anytime: 323-261-8894.

**SEEKING NONPROFIT STATUS?** www.kopsconsulting.com or 925-783-3790. Reasonable fees

## Vacation Rentals

**Sequoia Nat'l Pk. Small cabin** in the wilderness. Off the grid, but propane & generator give hot water, cooktop & frig. 1 bdrm 1 Ba greatm kitch & deck. You need 4WD for 10m of dirt road. No cell access. \$100/nite or \$500.wk. Ann 310-322-2471

**BIG BEAR CABIN RENTALS,** pet friendly, high speed Internet, Jacuzzis. 1-800-770-2210. www.bigbear-cabin.com.

**MAMMOTH LAKES CONDO** sleeps 6-8, 1 1/4 bath, free Wi-Fi, HDTV, Jac, sauna, frpl, BBQ, pool (smr), walk to shops, restaurants, shuttle. Well equipped. N/S, no pets. (310) 379-8100.

**X-Ski Sequoia National Monument:** Small guest house at 7,200 ft. elev. \$100/night. X-Ski blue-diamond trails. 3rd night free. N/S no pets (559) 542-2032.

## Saturday, November 10

**8 a.m. I: Navigation: Beginning Clinic.** Leadership Training Committee: Spend the day one-on-one with an instructor, learning/practicing map and compass in our local mountains. Beginners to rusty old-timers welcome. 4 miles, 500 feet of gain.) Diane Dunbar 818-248-0455 dianedunbar@charter.net; Richard Boardman 310-374-4371

## Advance Notice

### Saturday, Jan. 19 - 21

**O: Death Valley Bus Trip.** LA and Orange County pickups. Visit Death Valley National Park at the best time of the year for hiking. Trip cost is \$286. Contact Linda Berler, 2350 W. 238th St, Torrance, Ca 90501.

# OUTINGS LEGEND

- O** Uncomplicated hikes on trail
- I** involves off-trail travel
- C** Concessionaire-controlled event (non-Sierra Club)
- T** Technical skills

**Changes:** Trips subject to cancellation without notice.

**Outings info:** For more hike listings, please see the Schedule of Activities or visit: www.angeles.sierraclub.org, click Outings

All participants on Sierra Club outings are required to sign a standard liability waiver. If you would like to read the Liability Waiver before you participate on an outing, please go to: www.sierraclub.org/outings/chapter/forms, or contact the Outings Department at 415-977-5528 for a printed version.

In the interest of facilitating the logistics of some outings, it is customary that participants make carpooling arrangements. The Sierra Club does not have insurance for carpooling arrangements and assumes no liability for them. Carpooling ride sharing or anything similar is strictly a private arrangement among the participants. Participants assume the risks associated with this travel.

Seller of Travel identification number: CST 2087766-40. Registration as a seller of travel does not constitute approval by the state of California.

## Sierra Club Calendars

Order your 2013 wall or desk calendar today.

Mail check payable to "Sierra Club" to Sierra Club Angeles Chapter, Attn: Calendar Orders, 3435 Wshire Bl. #320, Los Angeles, CA 90010-1904.



Name: \_\_\_\_\_  
 Address: \_\_\_\_\_  
 Address: \_\_\_\_\_  
 City: \_\_\_\_\_ Zip: \_\_\_\_\_ Day Phone: \_\_\_\_\_

Type	Price Each†	Quantity	Total
Wall	\$10.75	_____	_____
Desk	\$11.50	_____	_____
Subtotal			_____
S/H*			_____
TOTAL			_____

\* Shipping & Handling: \$5.50 for the first, \$0.50 per additional calendar sent to the same address.  
 † Prices include sales tax

Pictured, bald eagle Cache la Poudre River, from desk calendar page. Photo by Vic Schendel.



## Briefs

### Chapter historian Bob Cates receives national Club award

Bob Cates on Aug. 4 was awarded the Susan E. Miller Award from national Sierra Club that honors administrative contributions to groups, chapters and regional entities. Cates has been a vital part of the Club and the Angeles Chapter for at least three decades.

A leader and longtime climber, Cates is active with the Hundred Peaks Section and the Natural Science Section, and serves as editor of the Natural Science Section newsletter too.

Together with his wife, Maureen, Cates has led the Nature Knowledge Workshop and a variety of camping trips that combine his interests in photography and natural science.

He has a life-long interest in conservation, including a leadership role in the passage of the California Desert Protection Act in 1994 and continuing into the present time with trail work days in the Angeles National Forest following the devastating Station Fire of August 2009.

Most know him as keeper of the Chapter's history. He has catalogued and preserved thousands of photographs and records, organizing and archiving them for future use. Last year during the Chapter's centennial, he and Maureen dressed in period attire from their collection of vintage hiking clothes, camping and hiking equipment and memorabilia.

—Ginny Herrerger

### Members and new members welcome at Sept. 20 event

Come find out about the many activities in your neighborhood and adventure outings offered by the Angeles Chapter, the largest chapter in Sierra Club. Learn about the many entities you can join and participate in – from hiking, cycling, mule packs, backpacks, barbecues and inner-city outings to the Santa Monica Mountains, the Sierra Nevada and beyond. The evening will feature informational displays, exhibits, demonstrations, refreshments and free drawings. All are welcome to explore this chapter of the world's largest environmental organization. Meet at 6:30 p.m. at the LA Zoo in Griffith Park, 5333 Zoo Dr, LA, 90027 (follow Sierra Singles signs to meeting room). Front gates close promptly at 7:30 p.m. so please arrive early. For more information, contact Jeanne Karpenko at jkarpenko@earthlink.net or (818) 244-0733.

### Calling all leaders to November Outings Assembly

The Angeles Chapter will host an all-day Outings Assembly on Nov. 3 designed to bring together outings leaders, provisional leaders and outings chairs.

The group will kick around ideas for future activities and outings and elect members of two key committees: Outings Management and Safety and Leadership Training. The event is sponsored by the Chapter Outings Management Committee. Meet 9:30 a.m. to 3 p.m. at Eaton Canyon Nature Center in Pasadena. Contact: Outings Management Committee Chair Melody Anderson or Donna Specht (donnaSpecht@juno.com)

### Get an energy boost with Sungevity's solar offer

Sierra Club has partnered with solar home company Sungevity to offer homeowners a chance to install rooftop solar panels easily and affordably. The offer is good in California as well as Arizona, Colorado, Connecticut, Massachusetts, Maryland and New York.

Sungevity will give \$750 to the Sierra Club for every homeowner who installs solar panels in their

home through this program. This means more money for Sierra Club's important environmental campaigns in California. Last summer more than 150 Californians took advantage of Sierra Club's Solar Homes Pilot Campaign. This year, we've expanded — and you may qualify.

To learn more about the program, go to [content.sierraclub.org/solar/sungevity?ref=11](http://content.sierraclub.org/solar/sungevity?ref=11) or call Conservation Coordinator Jennifer Robinson at [jennifer.robinson@sierraclub.org](mailto:jennifer.robinson@sierraclub.org) or call (213) 387-4287 ext. 204.

### Plein-air paintings of Edgar Payne on display in Pasadena

Edgar Payne was an outdoorsman who captured the spirit of the wilderness on his large canvases. The Pasadena Museum of California Art is featuring "The Scenic Journey," a retrospective of this early plein-air painter through Oct. 14. The exhibition includes his landscapes of the Sierra, the Southwest and Europe.

Of particular note to Sierra Club members is footage of a 1920s-era film made during one of Payne's pack trips on the North Fork Trail of Big Pine Creek, where Norman Clyde makes an appearance. For hours and ticket prices, contact [www.pmaonline.org/](http://www.pmaonline.org/) or call 626-568-3665.

### Electric car parade

This year the Sierra Club and the Electric Auto Assn. once again join forces Sept. 23 to create Plug-In America, a nationwide awareness of the environmental, economic and other benefits of plug-in electric vehicles through simultaneous events staged around the country.

Orange County National Plug In Day will celebrate the many benefits

of electric cars with a plug-in parade and a day at the beach. Come take a look at the Seal Beach Pier (in the wet parking lot at the corner of Main Street and Ocean Avenue) from 1 to 3 p.m.

—Bob Siebert

### Nominate someone for an Angeles Chapter award

Each year the Angeles Chapter recognizes individuals who have provided exemplary service to the Chapter in the fields of conservation, outings, leadership, interpretation of nature, and service. Recommendations for awards may be made by each group, section, committee and task force, based on the criteria listed below.

Award nominations forms are available on the Angeles Chapter website under "Chapter Awards." (You may fill out an online form or download and mail in the form.) Deadline for nominations is Nov. 1.

For more information, contact Mary Morales at [10ter@cox.net](mailto:10ter@cox.net) or 949-636-2981

### Please keep in e-touch!

Want to stay on top of the latest hikes, trips and e-news from the Angeles Chapter? Here's an easy way to sign up and change or update your e-mail address to make sure you will receive the Southern Sierran and the Travel Adventure newsletter.

Fill out a one-time registration form on the Sierra Club's website at [tinyurl.com/SierraClubnews](http://tinyurl.com/SierraClubnews).

Select which e-publications you want to receive. You may unsubscribe or change publications at any time.

Download the Southern Sierran in a clean, all-color PDF format to read right away or save for the future.

Questions? Contact [mary.forgione@sierraclub.org](mailto:mary.forgione@sierraclub.org).

## Suitable for framing—and buying



BILL BETTS/CAMERA COMMITTEE

The Angeles Chapter's Camera Committee fine art photo auction returns Nov. 10 with stunning photographs in urban and outdoor settings at venues around the world.

In the 23rd Annual Photo Auction Fundraiser, bidders have an opportunity to purchase original fine-art photographic prints in live and silent auctions starting at 5:30 p.m. at G2 Gallery in Venice.

The event begins at 4:30 p.m. with print viewing and a social hour with food and drink. Bidding on prints and items in a silent auction will take place throughout the evening. There will be photography books, gift certificates, workshops, and other items for sale.

The auction is the Camera Committee's major fundraising activity. All bidders and guests must RSVP by sending an e-mail to [SCCAuction2012@gmail.com](mailto:SCCAuction2012@gmail.com). Each person who replies receives a free drink coupon. Please include the name of each person in your party and the name of each person who would like to bid during the event (bidder numbers will be pre-assigned to speed the check-in).

Works for the auction are selected by a Camera Committee jury. Prints being auctioned off include works by photographers Don Kirby, Joan Gentry, Steve Anderson, Joan Schipper, Peter Mason, Jasmine Swoop, Judith Molle, Bill Betts, Alison Boyle, John Boyle, Dan Gee, Steve Cohen and others. To see a preview of the prints included in the auction, visit [angeles.sierraclub.org/camera/](http://angeles.sierraclub.org/camera/).

### For a special gift

Send a personalized Sierra Club Angeles Chapter Tribute or Memorial Card



It's a perfect way to say you care and to help the Angeles Chapter.

Within 24 hours, we'll send a personalized card suitable for any happy or sad occasion.

Contact Ron Silverman  
213-387-4289

[Ron.Silverman@SierraClub.org](mailto:Ron.Silverman@SierraClub.org)

Make someone smile — do it today!

**Registration Opens Sept. 15**  
**Class size limited!**

**2013 WILDERNESS TRAVEL COURSE**  
PRESENTED BY THE ANGELES CHAPTER OF THE SIERRA CLUB

**LEARN NEW SKILLS**  
**MAKE NEW FRIENDS**  
**EXPERIENCE NEW ADVENTURES**

Backpacking · Rock Scrambling · Snow Camping  
Navigation and much much more!

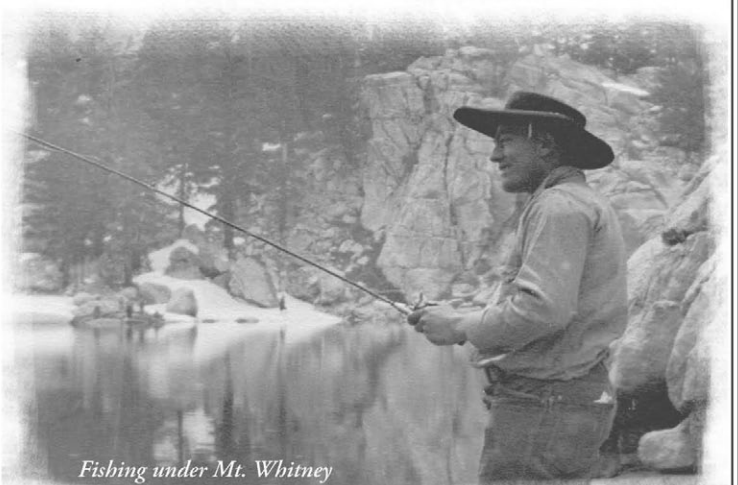
**2013 CLASS STARTS IN JANUARY**  
OFFERED IN 4 SOCAL AREAS

For information and registration go to:  
**WildernessTravelCourse.org**  
or call & leave message at: 310-967-2029  
CST #2087766

**WTC**

## INYO COUNTY, CA

Legendary Experiences. Larger than Life.



The Other Side of California  
DEATH VALLEY AND THE EASTERN SIERRA

Fishing • Backpacking • Camping •  
Biking • Mountaineering • Endless  
Backcountry • Historic Sites •  
Museums • Events • Timeless Towns

BIG PINE, BISHOP, DEATH VALLEY, INDEPENDENCE AND LONE PINE.  
[www.TheOtherSideofCalifornia.com](http://www.TheOtherSideofCalifornia.com)