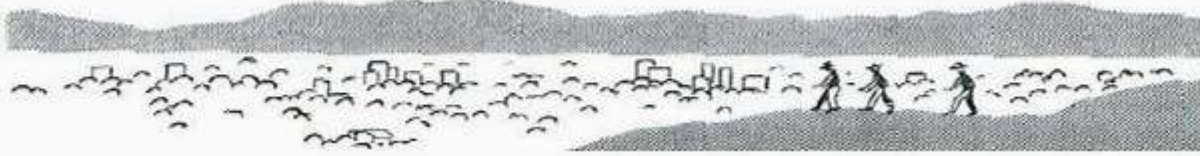




VALL-E-VENTS



SIERRA CLUB San Fernando Valley Newsletter February 2013

**Monthly Meetings-the 3rd Tuesday of the month at 7:00pm
Reseda Park Rec. Hall, 18411 Victory Blvd. (Cross Street-Reseda Bl.)
(Near child's play area), Reseda, CA. We are limited in our parking space because of
construction. For this reason, it's best to arrive early. There is a parking lot & street parking. If
the Rec Hall parking lot is full, there is ample parking at the One Generation lot, directly east at 17400 Victory
Boulevard**

Learn About Conservation Tips AT OUR SF Valley Sierra Club WEBSITE:

<http://angeles.sierraclub.org/sfvg/>

(See names, phone numbers and emails of our San Fernando Valley Management Committee in the sidebar)

TABLE OF CONTENTS

If you can't see newsletter, click here



Program Chair Mike Stevenson's electric car

PLEASE JOIN US

February 19, 2013

Beyond Oil

In Sidebar Column.
See write-ups for programs further down on the sidebar.

Brief program listing:

Beyond Oil
Feb. 19, 2013

New Mexico Adventure
March 19, 2013

Environmental Issues of the San Fernando Valley
April 16, 2013

Oil Spills—Causes, Effects and Responses
May 21, 2013

We need your help!

Scrabble Group

Management Comm.
phone, email

In Main Column

Beyond Oil Program
Feb. 21, 2013

Willis Simms cartoon

1000 at \$100 Sierra Club

Army Corps Destruction
Part of Sepulveda Basin

Storm Water Assessment

Tell Pres. Obama No Shell
Oil Drilling in the Arctic

Serious About
Climate Change?

Beef about Beef &
Climate Change

Weekend Activities

Monday Activities

Tues hikes

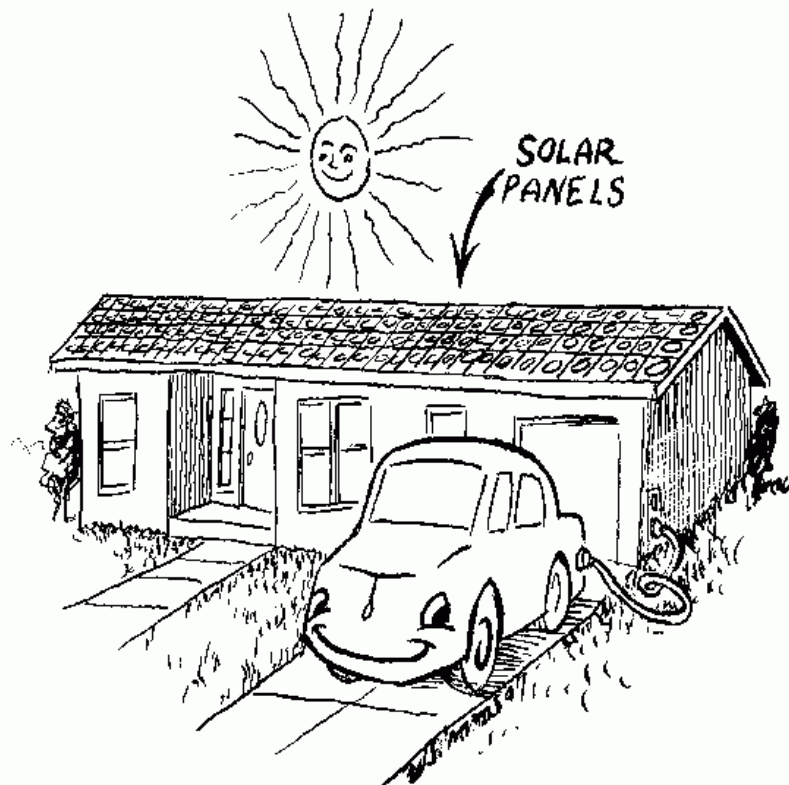
Thursday hikes

King-Gillette Ranch
activities

Darrell Clarke will present Beyond Oil. He is the Sierra Club National Beyond Oil Campaign volunteer co-lead; the Angeles Chapter Transportation co-chair; past Angeles Chapter chair; Conservation chair; and former ExComm member. The reality of global warming and rising world oil prices are two of the critical reasons for us to move away from oil. Join us to discuss how we can do this technically and how the Sierra Club can organize nationally and locally to achieve this vital goal.

There will be socializing and refreshments.

Cartoon by Willis Simms



Plugin hybrid car powered by the sun via solar panels

FUTURE PROGRAMS



Feb. 19, 2013

Beyond Oil

Darrell Clarke will present Beyond Oil. He is the Sierra Club National Beyond Oil Campaign volunteer co-lead; the Angeles Chapter Transportation co-chair; past Angeles Chapter chair; Conservation chair; and former ExComm member. The reality of global warming and rising world oil prices are two of the critical reasons for us to move away from oil. Join us to discuss how we can do this technically and how the Sierra Club can organize nationally and locally to achieve this vital goal.



March 19, 2013

New Mexico Adventure

Come to hear Mike Sappingfield, former Angeles Chapter Chair, hike leader since 1995, activist in the Santa Ana Mountains Task Force and in the "Stop the Toll Road" effort.

He will speak about his recent and upcoming Angeles Chapter New Mexico Adventure Trip on

Dear Angeles Chapter Members & Supporters,
For over 100 years the Angeles Chapter has been a constant force in the environmental landscape. We have weathered good times and bad, flush times and lean. Despite increasing costs and declining donations, our Executive Committee, in partnership with our tiny, yet crackerjack staff, has been doing all it can to be financially responsible while maintaining the basics needed to run our Chapter. But now we need your help.

We understand that even the smallest gift is a struggle for some and we appreciate any and all donations, but we also recognize that for many a more substantial donation is possible. To that end we are establishing a new group of donors known as the "1000 at \$100", aimed at enlisting the aid of 1,000 of our members to donate at least \$100 to ease our funding crunch and allow us to continue our ability to provide local opportunities to enjoy, explore, and protect the environment. If you can't give \$100 all at once, please consider making a monthly donation of \$10.

[Please donate today.](#)

A heartfelt thank you,

Hersh Kelley, Chair, Executive Committee & Ron Silverman, Senior Chapter Director

If you would like to pay by check, please send it to:

Angeles Chapter Sierra Club
3435 Wilshire Blvd #320
Los Angeles, CA 90010

Make your check payable to the Angeles Chapter Sierra Club

[Read the longer original appeal letter:](#)

http://action.sierraclub.org/site/MessageViewer?em_id=242185.0

SIERRA CLUB
FOUNDED 1892
Angeles Chapter

1000 at \$100 Donors

For over 100 years the Angeles Chapter has been a constant force for the environment in good times and bad. But now we need your help.

We are asking 1000 donors to give at least \$100 or \$10/month to ease our funding crunch. Please help us meet our goal.

DONATE \$100 TODAY!



Listing of donors for the
1000 at \$100 Donors fundraising campaign
<http://angeles2.sierraclub.org/1000donors>

October 12-19, 2013. The Albuquerque Balloon Fiesta is the largest and best known hot air balloon event in the U.S. and allows you to walk among the Balloons as they are getting ready to take off. This trip also features two active Native American Pueblos, Historic Chaco Canyon and several National Monuments. There will be socializing and refreshments. Meet 7 pm Reseda Park Rec



*Pacoima Reservoir to catch water in the mountains.
Photo NPS & River Project*

April 16, 2013

Environmental Issues of the San Fernando Valley

Dan Feinberg, President and one of the founders of CASM SFV ("CASM") will present a program about the work this non-profit organization is doing to address various critical environmental issues facing the San Fernando Valley. These projects include a planned Strip Mine Project and the Sediment Removal Project planned for the Pacoima Reservoir. Come and learn about the important work this group is doing and how you may be able to help. There will be socializing and refreshments, start 7pm



May 21, 2013

Oil Spills –

Army Corps' Destruction of 48 Acres Habitat at Sepulveda Basin



South Wild Life Area Pond 2 years ago



Wild Life Area Pond Dec. 2012

(Pictures from the San Fernando Valley Audubon Society)

<http://www.sfvaudubon.org/>

*By Kris Ohlenkamp, Conservation Chair San Fernando Valley Audubon Society (SFVAS)
Dave Weeshoff, President SFVAS*

(Look at the first video at the end of this article to hear what happened. Then take a virtual tour with the other videos.)

In the middle of December the United States Army Corps of Engineers (USACOE) laid waste to the South Wildlife Reserve in the Sepulveda Basin. What has taken nature 30 years to develop has been destroyed in one week by a mechanized blitzkrieg assault by the Corps. The public, including the Sepulveda Basin Wildlife Areas Steering Committee (SBWASC) had no advance notice of these intended actions, even though we have requested many times to be informed of all proposed projects in the Basin.

Under the guise of a "Vegetation Management Project" the Corps has indiscriminately removed nearly all of the vegetation (native and non-native) that has provided food, shelter, and breeding habitat for thousands of migratory and resident birds since this area was planted from 1979-1984. The Corps 1) intentionally avoided public input in the planning process, 2) published a "No Significant Impact" document which included serious errors, omissions, and misrepresentations of fact and intent, 3) failed to notify well-known organizations, which have supported the Wildlife Area for many years, of their intentions or findings, 4) allowed insufficient opportunity to respond to the plan, 5) ignored constructive comments from responsible organizations which were provided once the plan was discovered and, 6) acted precipitously to decimate the vegetation by going well beyond what was described in the Project plan.

The Corps plan of completely eliminating all vegetation (except for a few of the native trees), spraying herbicides for the next 2 to 5 years, changing a naturally evolving, low maintenance habitat dominated by diverse native vegetation into an unnaturally open mono-culture of salt grass, will require many years for the habitat to recover, and will create a large, unsightly scar on the Wildlife Area. The devastation is already so complete that it will take a decade or more before the area can rightfully be considered a "Wildlife Area".

The "Vegetation Management Project" called for selective removal of non-native trees and shrubs, trimming of native trees, and removal of dead limbs and debris along Haskell Creek, the berm along Burbank Blvd., and within 50 feet of the Dam structure. Instead, they removed nearly all of the vegetation (including many mature native Cottonwoods and Willows) in approximately 50 acres of the Wildlife Area, completely destroyed and filled in the Pothole Pond, and created several new "access roads". Many of the trees and native plants that were taken out were in an area previously planted as mitigation for a Tillman Plant project. The decomposed granite trails, signs, trail markers and stone structures have been destroyed or removed. Tens of thousands of dollars of public money spent on these improvements has been plowed under in one week of needless destruction.

The Corp's stated mission of environmental stewardship with a long term objective of restoring the Basin's diverse native habitat is apparently hollow hyperbole. The extent of the devastation inflicted by the Corp's recent activities must be seen to truly comprehend the damage that has been done. Urgent steps must be taken to stop the immediate clear-cut activities and prevent even greater long term impacts.

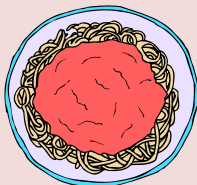
RESULTS OF MEETING WITH THE ARMY CORP OF ENGINEERS

On Jan 11th, We (SFVAS, SBWASC, George Watland of the Sierra Club) concluded our initial meeting with the Corps, and feel that we have made significant progress in reaching verbal

Causes, Effects and Responses

Dave Weeshoff, Past Board Chairman of International Bird Rescue will present a program entitled: "Oil Spills – Causes, Effects and Responses". Dave is the President of the San Fernando Valley Audubon Society, a Life Member of the Sierra Club and a frequent guest speaker on birds and environmental issues. He is an expert on the care of sick, injured, orphaned and oiled aquatic birds.

Come and learn all about oil spills including their causes, typical bird species affected, rescue operations, care, cleaning and rehabilitation of the birds involved and typical spill cleanup. He will also cover the Cosco Buson spill in San Francisco Bay in 2007 as well as the Deepwater Horizon oil blowout in the Gulf of Mexico in 2010. There will be socializing and refreshments. Start 7:00pm.



**\$25.00 Fundraising
Italian Dinner
& Program**

June 18, 2013

**Tues., 6:30 pm
At Prince of Peace
Episcopal Church
5700 Rudnick Avenue
Woodland Hills, CA
91367
Info.
818-999-5384,
jxszende@yahoo.com**

**For our Dinner
Muriel Horacek
presents**

**Adventurous
Travel
With Earthwatch**

agreements on how to move forward in a productive fashion. We were given the assurance that no further work will be done on the existing Vegetative Management Program (VMP) without direct input and supervision of our volunteer experts. We acknowledge the immediate need to remove some of the debris that was generated in the first week of Phase 1, and will be present to observe and provide guidance during that process. They have acknowledged that their in-house and public communications processes need to be improved, and have already begun to take steps in that direction. And, we have both agreed to meet again soon (next week) to tour the area together and schedule a series of meetings to establish mutually agreeable goals.

We have provided them with a list of significant problems with the VMP description and implementation, as well as a list of recommendations for moving forward. When they have had time to review this material we will meet again and begin the real work of assuring permanent change for the better. We feel good about the progress made and are hopeful.

THE SIERRA CLUB ANGELES CHAPTER WEBSITE ASKS YOU TO WRITE TO THE FOLLOWING:

Senators Diane Feinstein and Barbara Boxer, and to your Councilmember if you live in the City of Los Angeles. Ask them to stop any further action on this project. Please also copy your congressional Representative. Brad Sherman is the Representative for the Sepulveda Basin. [Click to read the talking points](#)

US HOUSE REP. SHERMAN & STATE SEN. PAVELEY'S DISTRICTS CONTAINS SEP. WILDLIFE BASIN

US Rep. Brad Sherman's letter to the US Army Corps of Engineers [Click to read his letter.](#)
State Senator Fran Pavley [Click to read her letter.](#)

WATCH THESE VIDEOS TO GET AN IDEA OF THE SITUATION NOW & BEFORE

1-13-13 Video Kris Ohlenkamp, Audubon, & George Watland, Sierra Club, speak about what happened <http://www.youtube.com/watch?v=wMPbeYAL6i4>

Then a tour with Kris Ohlenkamp Audubon, Sandra Tapia & Joe Phillips of Sierra Club
Tour 1-13-13 pt. 1 http://www.youtube.com/watch?v=bNw1Ft0fZ_o&feature=youtu.be
Tour 1-13-13 pt. 2 <http://www.youtube.com/watch?v=rYAHu1fUMyE&feature=youtu.be>

12-22-12 Tour of the cleared area—voice is Kris Ohlenkamp
<http://www.youtube.com/watch?NR=1&v=0ReqTaHFiGY>

1-1-13 views of destruction & preserved uncleared area
More tour <http://www.youtube.com/watch?NR=1&v=CJLPPO8NjKI>

2010 lovely tour of lake & foliage in Sepulveda Wildlife area
http://www.youtube.com/watch?NR=1&v=xl_KE7SfUpo

TAKE A HIKE IN THE SEPULVEDA WILDLIFE AREA: Because of the plant destruction that was brought on by the Army Corp of Engineers, we are tentatively planning to conduct a public information hike around the damaged area each Sunday. If you are interested in the hike or if you are an interested hike leader, please contact Joe Phillips at 818-348-8884 email recreationbyjoe@yahoo.com

Muriel is a Volunteer Field Representative of the Earthwatch Institute and has been an activist participant for a number of years. Finding solutions for a sustainable future, is the purpose of this organization. Muriel will show, her experience is vast and interesting. Her experiences include camping out in a cave in China while monitoring the white-headed langur, saving the cheetahs in Namibia, observing migrating birds in Israel, Brazil and Alaska and the wild horses off the coast of Maryland. The Panda Project meant an expedition to the reserve there in China this last July with family members. Her participation as a zoo docent keeps her here and busy in California.



Little Tujunga Creek passes beneath the 210 Fwy; the photo shows the large amount of water that can come down from the mountains when it rains & snows. The intention is to capture this water to put in the underground aquifers.
(Photo from The River Project)

Property Owners in L.A. asked to Vote on Storm Water Assessments

By E. Trogman, Sierra Club Water Committee Member

Land owners should have received by now information on this initiative. **The reason for the fee is to clean up water pollution and catch more local rain to put into our underground aquifers. Our oceans and drinking water are being polluted from land run-off; in addition, both people and animals are becoming sick from swimming in our oceans. We are getting the majority of our drinking water from many hundreds of miles away and it will be more difficult to obtain this water in the future. We need to use more of our local water.** Each parcel of land will be charged per storm water run-off, based on lot size, and water-resistant area etc. Fees collected will be allocated accordingly. The owners who will be paying the most are properties like businesses with a large surface of parking lots & building square footage. When the money is collected it will be distributed as follows:

- 10% - Storm water projects/capture
 - 40% - local municipalities
 - 50% - Watershed Authority Groups for regional projects
- A 50% plus 1 vote is needed for the ballot to fail or be advanced.

Below is the explanation of oversight for the money collected.

Watershed Authority Groups

Watershed Authority Groups consist of representatives from each municipality in the watershed, plus a public water supply agency representative and a land conservancy representative.

A Stakeholder Advisory Panel (made up of community members) helps the Watershed Authority Groups select projects and develop 5-year plans that meet the needs of the community.

All plans and projects must be approved by the Oversight Board.

Oversight Board

Appointed by the Board of Supervisors and made up of property owners who are representatives from Watershed Authority Groups and the Flood Control District, plus one member from the environmental community, and two at-large members from the general public.

Reviews all Watershed Authority Group plans and projects.

Reviews all \$2 million+ local projects.

Annual Audits

The Auditor-Controller of Los Angeles County will conduct annual audits of municipalities and Watershed Authority Groups actual and budgeted use of funds.

[A collaborative local approach, since this is more than a one city problem.](#)

Just 1 inch of rain can produce billions of gallons of water, which enters into our flood protection system. The way in which stormwater flows doesn't necessarily follow city lines. Many cities send

We need your help!

The Sierra Club relies heavily on its volunteers to carry out its Mission. Since you probably have a skill that we need and if you can spare a few hours a month, let us know.

Call Elaine Trogman
(818) 780-8345

Scrabble Group

Do you enjoy spelling?
Are you into words and combinations of

words? Does the idea of spending hours hovering over a Scrabble board appeal to you? If so, you might like to join our Scrabble group. We meet once a month for an evening of fellowship, refreshments, and hard-fought Scrabble games. Beginners, intermediates, and experts are welcome. For more information call Julie at (818) 999-5384 or email julieszende@gmail.com

**SAN FERNANDO VALLEY
SIERRA CLUB
MANAGEMENT COMMITTEE**

Chair/Rep to Executive Committee
Barry Katzen
818 341-8304
barkat@rocketmail.com
Vice-Chair....Anita Devore 818 705-2301
Treasurer...Gabe Szende 818-999-5384
russianstore@earthlink.net
Outing Chair
Gabe Szende 818-999-5384
russianstore@earthlink.net
Secretary...Belem Katzen 818 341-8304
Programs...
Michael Stevenson
drmsteve@aol.com
818-419-5318
Co-membership Chair:
Emaline Rich 818 340-5955
Julie Szende 818-999-5384
julieszende@gmail.com
Political Committee...
Barry Katzen 818 341-8304
barkat@rocketmail.com
Outreach:
OPEN
Conservation Chair:
Terrie Brady
NEW 818-264-6731
terriebrady@gmail.com
Publicity...Joe Phillips
818 348-8884
recreationbyjoe@yahoo.com
Hospitality... Joe Phillips
818 348-8884
recreationbyjoe@yahoo.com
Info Phone... Joe Phillips
818 348-8884
recreationbyjoe@yahoo.com
Vall-E-Vents Editor
Elaine Trogman
818-780-8345

water to the same place, such as the Los Angeles River, San Gabriel River or Ballona Creek. Ultimately, all that stormwater ends up going to our Bay and coastal waters.

This Measure allows cities and the County to work collaboratively on water quality projects where they make the most sense, from inland all the way to the ocean, rather than having a string of very expensive and perhaps redundant projects paid for by each city. Projects funded by the measure may be single-purpose, or may be multi-purpose and multi-benefit, cleaning water, recharging groundwater supplies, and beautifying public spaces.

The county has been putting pressure on cities to clean up so they don't contribute to water pollution. Many cities answer that they don't have the extra money. The Measure sends 40% of funds directly back to cities and County unincorporated communities, in proportion to the fees paid by property owners in that area. Cities make decisions about funding local water quality projects, which can include new and existing services such as sweeping streets to capture trash, and maintaining storm drains and filters.

The Measure also sends 50% of funds to Watershed Authority Groups, regional collaborative groups of cities and County unincorporated communities in that watershed. Watershed Authority Groups make decisions about funding regional water quality projects in the 9 watershed areas. (See [Clean Water Projects](#) map for watersheds.)

The remaining 10% of funds go to the County Flood Control District for countywide water quality monitoring, projects for improving water quality, performance oversight and technical assistance to cities and regional collaborations. The proposed [Ordinance](#) includes the project criteria for determining which projects can be funded.

The Sierra Club Water Committee voted to support the "Storm Water Assessment." They did this because some action is badly needed to gain more and better drinking water. We need to save our oceans and the people plus animals who swim in them. Most improvements can't be done without money and these improvements take time to create. See domoic acid case below to get an idea of what water pollution can do.

Water pollution example, Domoic Acid Cases Hit Malibu

Algae can be a marine mammal's biggest threat; find out why.



Based in the Santa Monica Mountains, California Wildlife Center's Marine Mammal Response Team (MMRT) was busy during 2011 with a number of rescues involving animals suspected of having Domoic Acid (DA) toxicity. DA toxicity is caused by a common type of algae in the waters off Southern California. These animals tend to exhibit a wide range of symptoms, from head bobbing or weaving, to full seizures that last for seconds or minutes. www.cawildlife.org

WATCH THIS VIDEO FOR AN ENTERTAINING EXPLANATION OF THE WATER POLLUTION PROBLEM: http://www.lacountycleanwater.org/app_pages/view/493

L.A. COUNTY'S WEBSITE TO ANSWER YOUR QUESTIONS

This extremely important site will explain what L.A. County would like you to know. http://www.lacountycleanwater.org/app_folders/view/429

WATER COMMITTEE of the Sierra Club Angeles Chapter

If you are interested in water issues in California & especially So. Calif., we urge you to come or tune into the WATER COMMITTEE by phone. We have discussions within the committee and we, also, invite experts to speak to us. It meets every month on the second Tues., at 7:00pm. If you can't make it in person then you can choose to tune in from your home telephone or by video conferencing.

The FREE phone conference line is available at [1-866-501-6174](tel:1-866-501-6174) Code: 1000 400 1892.

Video conferencing is now available - link to video conferencing below www.anymeeting.com/angelesvideo1

Any questions for the Water Committee contact Charming Evelyn. If you want to personally attend the Water Committee, contact Charming for location. bcharmz@aol.com

ektrogman@yahoo.com
Member at Large
Edith Roth 818-346-9692
Cartoonist
The Late Willis Simms

Tell Pres. Obama NO Shell Oil Drilling in the Arctic

[This is the last straw:
Tell President Obama we can't trust Shell in America's Arctic!](#)



Shell oil rig after grounding. Photo courtesy of the U.S. Coast Guard.

Take Action!

"The Last Straw" - After Shell's latest failure, Sierra Club Calls for Drilling Permits to Be Immediately Revoked. While you might have been partying on New Year's Eve, Royal Dutch Shell Oil drilling ship *Kulluk* ran aground near Kodiak Island, Alaska with over 150,000 gallons of petroleum products; it is the latest in a long list of failures by Shell in the company's much-hyped but continuously failed attempt to drill in the Arctic. **Even under the best circumstances, drilling in the Arctic Ocean would be risky. Currently, there is no effective way to clean up an oil spill in Arctic conditions, and there is a lack of infrastructure in the region to support an adequately safe drilling or cleanup effort.** Last year, Shell came close to drilling for oil in the Chukchi and Beaufort Seas - also known as the Polar Bear Seas because they are home to 20% of the world's polar bear population. But Shell showed it was completely unprepared for the reality of the stormy waters of the Arctic Ocean. Shell's ships caught fire, the spill clean-up equipment was destroyed during testing, and at the last minute, Shell admitted it wouldn't be able to comply with its clean air permits. But this most recent incident is the last straw. The Polar Bear Seas are far too important and fragile to leave in the hands of Big Oil. They are home to walrus, endangered ice seals, hundreds of species of migratory birds, and bowhead and beluga whales. Shell's incompetence could lead to an irreversible disaster.

Regardless, Shell was allowed to move forward in 2012 only to prove its own inability to operate in the Arctic. 2012 revealed the chaotic and remote conditions of the Arctic Ocean and Shell's inadequate planning. Problem after problem forced Shell to severely scale down their plans for summer drilling until the season of mishaps and broken promises in the Arctic came to a close in October. Though Shell won approval to conduct "tophole" drilling, it was unable to complete any exploration wells during this open water season.

Sierra Club Executive Director Michael Brune released the following statement in response:

"In just one year, Shell has proven over and over again that they are completely incapable of safely drilling in the Arctic. Their ships have caught fire and lost control, they've damaged their own spill containment equipment, and they've been caught entirely unprepared for the challenges of the Arctic. Now, they've actually run a ship carrying tens of thousands of gallons of oil aground in Alaska.

This is the last straw. We should judge Shell not by their assurances or their PR tactics, but by their record – and Shell's record clearly demonstrates that letting them operate in the Arctic is an invitation for disaster.

America's Arctic – whether offshore or in the Arctic Refuge – is the last place we should be drilling for oil and gas. If we are serious about fighting climate disruption and protecting our wild places, the President should immediately cancel Shell's drilling permits before it is too late, and ensure the Arctic is off-limits for new oil and gas leasing and drilling this year and every year."



Sunset

By Sierra Club Member Gayle Dufour

Conservation Corner

Are We Ever Going To Do Something About Climate Change?

By Michael Stevenson

As you have no doubt noticed since President Obama has been elected, instead of doing all that needs to be done about the rise of CO₂ in our atmosphere, we are seemingly bogged down forever in a political argument as to whether humans are actually the cause of the problem. This disagreement between politicians is probably not going to end any time soon. As Bill McKibben wrote in a recent article in The New Republic: "On what is quite possibly the single biggest issue the planet has faced, American conservatism has reached a near-unanimous position, and that position is to pay no attention to all those scientists". One of the great schools of political thought has for now checked out. So how did we get here and where do we go from here?

First off most people don't understand how science actually works. A recent study found that fewer than 20% of Americans possessed enough basic scientific literacy to be able to read with understanding articles about science in the popular press, to engage in conversation about the validity of the conclusions and then express positions that are scientifically and technologically informed. This is tragic as having a basic knowledge of scientific principles is no longer a luxury but in today's complex world is a necessity. As a result many Americans don't understand the difference between climate and weather and the part that the burning of fossil fuels play in driving climate change. Education of the public is difficult in the face of millions of dollars a year spent by the fossil fuel industry to protect their short-term interests by keeping the public confused. Most of us remember the gigantic effort put forward by the tobacco companies to cast doubt on the link between cigarette smoking and cancer.

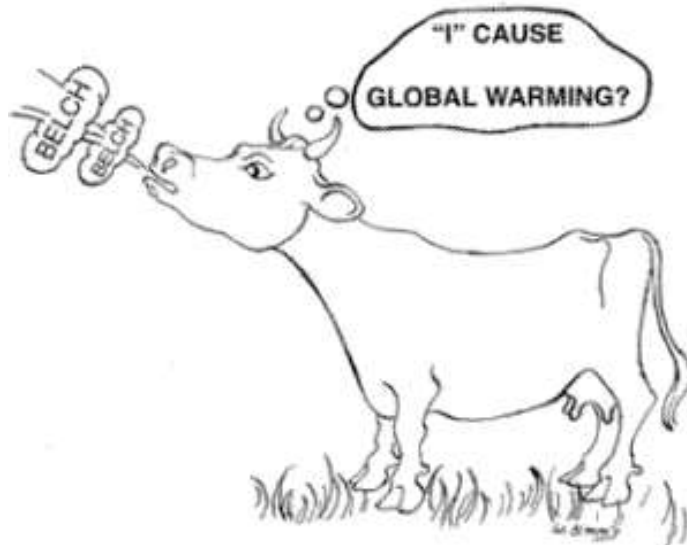
Scientists speak in terms of confidence intervals and probabilities of an event occurring. This leads the opposition to climate change to put out the message that if scientists don't know something for sure then they really know nothing. The public wants to know if our climate is warming, by how much and how bad the effects are going to be. Because the earth's climate is complicated all scientists can do is to give us some probable outcomes if we continue to pollute the atmosphere with CO₂. These projections into the future could be much rosier or considerably worse than expected. If you're a heavy smoker for 30 years there is a significant chance that you'll develop lung disease at some uncertain time in the future but if you're lucky you could live a long healthy life. Smoking is down in the U.S. as most people have decided it's not worth the risk. It took a while for the "tobacco scientists" to be discredited and for people to realize that smoking is not worth the risk of an early death. Much of the damage from smoking is to the individual and their loved ones but with climate change every day we wait for non-believers to get on board places the entire earth and the creatures that inhabit it at an ever increasing risk.

Scary is that we have waited over a hundred years for the Theory of Evolution, as first proposed by Charles Darwin in 1859, to be accepted. Scientists accept evolution as the best and only theory that accurately explains how humans and other species came to be so diverse. In spite of this, in the U.S., according to a 2007 Gallup Poll, only 30% of conservatives believe in the theory of evolution, one of the cornerstones of modern biology. In the face of this survey how can we ever hope they will come to accept climate change as scientific fact in time to prevent a catastrophe?

Obviously we have to find a way to change this dynamic by working harder to more effectively answer and marginalize "Climate Change Deniers". We also need to move forward without them through tougher EPA regulations, Presidential Executive Orders, by making California a leader in the new green economy and by our own personal energy conservation efforts. We need to start now!

Beef About Beef

Cartoon by Willis Simms



The connection between our meal choices and global warming might be another "inconvenient truth" that is particularly hard to swallow.

by Sarah S. Mosko, Ph.D.

Global warming is on the tip of many tongues these days, but so are hamburgers, pork chops, and fried chicken. As hybrid car sales are up and SUV sales on the decline, it seems Americans might be waking up to the reality that each of us bears some responsibility for climate change through our everyday consumer choices. John Robbins, the once heir-apparent of the Baskin-Robbins ice cream company, has authored bestsellers, such as *The Food Revolution*, detailing the detrimental environmental impacts of a meat-based diet. He and other experts make a strong case that food choices rank right up there with what car you drive in determining your personal contribution to global warming. A quick look inside the hamburger bun easily makes the point.

Massive Fossil Fuels Consumed to Produce Beef

Most U.S. beef comes from cows raised on factory farms where hordes of animals are crowded onto concrete lots and fed grains, mostly corn. The grains are also grown using industrial farming methods that rely heavily on application of synthetic nitrogen fertilizers and pesticides manufactured from natural gas or oil. Enormous amounts of energy were consumed to extract those fossil fuels and transport them, often across the globe, to chemical factories where energy again is used to transform them into the desired chemicals. Those fertilizers/pesticides are then transported to grain farms that, from planting through harvest, run on diesel-fueled machinery. Fossil fuels were also expended to manufacture the farm equipment. Electricity, derived from the burning of coal, pumps up water from underground aquifers to irrigate the fields. The feed grain products are moved by truck or rail to feed lots. Once the cattle are fattened up, they're trucked to slaughter houses where electrically-driven machines prepare and package burger patties. Refrigerated trucks carry the patties to markets and restaurants nationwide. The burgers are most likely cooked on a natural gas-fired grill.

Livestock Produce Volumes of Global Warming Gases

Heat-trapping CO₂ is produced at each of these steps, all of which rely on fossil fuels (oil, coal or natural gas). About 16 fossil fuel calories are burned to produce a single calorie from beef. Producing one calorie from soybeans, in contrast, eats up only 1/4 of a calorie from fossil fuels, making soybean production about 64 times more efficient⁽¹⁾. According to a 2006 report from the [United Nations Food and Agricultural Organization](#), ⁽²⁾ 9% of all CO₂ stemming from human activity is attributable to the livestock sector. And it doesn't stop there. The report highlighted that livestock are major contributors to two other highly potent greenhouse gases: 37% of human-related methane (23 times the global warming potential of CO₂) comes from the belching and flatulence of cattle and other ruminants; 65% of human-related nitrous oxide (296 times the global warming potential of CO₂) comes largely from manure. Furthermore, tropical rainforests are being burned down at an alarming rate to create pastureland for cattle, releasing suddenly into the atmosphere as CO₂ the vast amounts of carbon that were stored over centuries within the plant material.

Food Choices Affect Global Warming as Much as Driving Choices

Most of us probably blame vehicle emissions when we think of global climate change. However, the United Nations report concluded that the livestock sector is responsible for 18% of global greenhouse gas emissions (measured in CO2 equivalents) – more than that of the transport sector! Indeed, geophysicists [Gidon Eshel and Pamela Martin](#) at the Univ. Chicago compared the total greenhouse gas emissions of animal- and plant-based diets and found that a person eating a vegetarian diet contributes about 1.5 tons of CO2 equivalents *less* per year than someone consuming the same number of calories from a typical American diet (about 28% of which come from animal sources). Going veg reduces your greenhouse gas emissions more than switching from an average sedan (Toyota Camry) to an ultra fuel-efficient hybrid (Toyota Prius).¹

For those of us raised on meat protein dished up three times a day, the connection between our meal choices and global warming might be another “inconvenient truth” that is particularly hard to swallow. Maybe it will help to learn that study after study finds that vegetable protein is not only perfectly adequate but also associated with better health and longer lifespan!

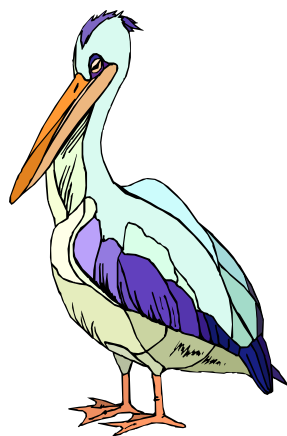
My hope is that a cultural shift is coming where the veggie patty replaces the beef patty in the *All-American* burger. I hope it happens soon since the latest research from the [National Center for Atmospheric Research](#) predicts that the Arctic could be nearly devoid of summer sea ice by as early as 2040 if greenhouse gas emissions are not seriously curtailed. To the dwindling number of skeptics, global warming might still feel reminiscent of Chicken Little crying out “the sky is falling,” – but given what human negligence has done to our atmosphere, this time it’s for real.

(1) [Eshel G, Martin P](#) (2006) Diet, Energy and Global Warming. *EarthInteractions*:10 (calorie input-output data extrapolated from Table2).

(2) [Steinfeld H et al.](#) (2006) Livestock’s long shadow: Environmental issues and options. [UN Food and Agricultural Office](#).

Visit www.BoogieGreen.com to read other articles by Sarah Mosko

SEE MORE PICTURES IN HIKE SECTION BELOW



WEEKEND ACTIVITIES

COME TO OUR PROGRAMS AND PICK UP OUR SCHEDULE OF ACTIVITIES through JUNE. 2013. The schedules have programs and hikes in the San Fernando Valley area.)

See programs and hikes thru JUNE 2013 from our San Fernando Valley Sierra Club website. Click this link below to start:

<http://angeles.sierraclub.org/sfvg/>

CALLING ALL HIKE LEADERS OR TRAINEES FOR

SATURDAY OR SUNDAY HIKES

Help people who work to get exercise and learn about nature.

Call or email Gabe Szende 818-999-5384

russianstore@earthlink.net,
gabesende@yahoo.com

SATURDAY & SUNDAY

We have been receiving a number of inquiries from people who

would like to enjoy the outdoors, either by climbing the mountains or walking around the city on weekends. We will be scheduling activities around the San Fernando Valley and the surrounding neighborhoods on the 3rd weekend of every month starting in March.

If you would like to join us please contact Gabe @ 818-999-5384 or via e-mail @ gabesende@yahoo.com for the location and time.



2013 CAR-CAMP TRIP

April 26 -28 Fri- Sun, Idyllwild Car Camp:

O: Join us for a relaxing, enjoyable weekend in Idyllwild. Stay in the campground or in a motel near the camp. Sat AM there will be hiking , with excursion into town in the afternoon. Happy Hour and International potluck Sat evening followed by a campfire. Sun AM breakfast at a charming local eatery followed by an easy hike along nature trails. Families with children are welcome. Send SASE , rideshare info, \$30 (Sierra Club).

Ldr: Gabe Sende 818-999-5384 , Co-leader: Barbara Madel

June 7- 9 Fri-Sun

Winery Tour & Carcamp in Santa Inez Valley:

O: Join us for a relaxing, enjoyable weekend in Santa Barbara County. Moderately paced hike Saturday morning; afternoon tour of local wineries. Return to camp for Happy Hour with a delicious international potluck dinner to follow. After dinner enjoy camaraderie around a blazing campfire. Sunday options include an additional hike, sightseeing, a boat ride, or a tour of nearby California missions. Children welcome. Send phone numbers, rideshare info, \$30 (Sierra Club) to

Ldr: Gabe Sende 818-999-5384 , Co-Ldrs: Barbara Madel, Iris Edinger.



Upper Zuma Falls Newton Cyn Hike, Thurs. hike Feb. 7, 2013

See write-up at end of this newsletter under Thursday

photo by Sierra Club hike leader Pixie Klemic.

SATURDAY

Top of Reseda, Tarzana, SF Valley, There will be no Feb. hike
Third Saturdays of each month, 8:00am.

Mar. 16, April 21, May 19, June 15, 2013,

Moderate 2hr, 5 mile RT 800' elevation gain hike in the hills above Tarzana and Reseda

overlooking the complete San Fernando Valley on fire road/trail composed of compacted dirt/sand and loose gravel. In the beginning and end, there will be very little shade and tree coverage with some shade in between. It is recommended that you bring sun block, wear light colored clothing/hat for daytime hiking, and a jacket for nighttime hiking, along with two quarts of water. Lug soles or athletic footwear for proper footing. Meet at 8:00am on third Saturdays of each month at trail-head at the Southern top of Reseda at the chainlink fence where the park entrance is and the paid parking begins. 3 miles South of Ventura Blvd after the sixth stop sign. Rain cancels

Hike leader: Joe Phillips 818 348-8884 Asst leader: TBD

May 4, 2013: Eagle Rock Stairway Hike-Sat

Join us for a relatively gentle 3.8 mile walk through a little-known section of Eagle Rock, full of solid local architecture and featuring some of the city's few "sidewalk staircase" streets. The complete hike consists of 328 steps. It should last no more than two hours. After the walk we can have lunch at a neighborhood Italian restaurant. Meet at 10AM at the corner of Colorado Boulevard and Townsend Avenue near Trader Joe's in Eagle Rock. Wear walking shoes and bring money for lunch. Rain cancels.

Ldr: Gabe Sende 818-999-5384, Co-Ldr: Barbara Madel

June 1 Franklin Canyon Walk-Sat

O: Join us for an easy-paced docent-led walk through Franklin Canyon Park. Walk will be 3-4 miles with little elevation. Some great views of Los Angeles are found here. Franklin Canyon has been the site of many movies, and the docent will show us the better-known sites. You will probably recognize some of them. After the hike there will be a potluck lunch. Bring your own favorite dish and drinks to share. Rain cancels. Meet at Clubhouse parking lot at 9:45AM. Take Coldwater Canyon south to Franklin Canyon Rd. Turn right and follow road to parking lot.

Ldr: Gabe Sende 818-999-5384, Co-Ldr Jeff Slottow.

SUNDAY

TAKE A HIKE AT SEPULVEDA BASIN: Because of the plant destruction that was brought on by the Army Corp of Engineers, we are tentatively planning to conduct a public information hike around the damaged area each Sunday. If you are interested in the hike or if you are an interested hike leader please contact Joe Phillips at 818-348-8884 recreationbyjoe@yahoo.com

Feb 17, 2013 Stagecoach Trail:

Meet 9:00 a.m., 3rd Sunday of each month (Feb 20, 2013) No hiking in summer-early fall due to hot weather. An interpretive hike into the history of Santa Susana Pass State Historic Park: Hike is 3 to 4-1/2 mile loop up the historic Stagecoach Trail. Meet at park entrance on Larwin Ave. Park on street. **Leader: Lee Baum (818-341-1850)** Sierra Club-Santa Susana Mtns. Task Force

February 3, 2013 Redline Metro Stations Tour: Sun

O: SFV/International Community

O: Join us for a docent-led walking tour of a number of Redline metro stations beginning at Hollywood Station and ending at Universal Station. This is a rare opportunity to study the station interiors, which are decorated with the artwork of some 300 commissioned artists. On the tour the docent will give insights into the art and the artists who created it. The route is completely free and takes about two hours. At the tour's end we'll take a train to Union Station. From there we can walk to Olvera Street, where we'll have lunch at one of the fine restaurants in the neighborhood. Next we will visit Pico house, the first-three-story building constructed in LA (1870). You will receive a courtesy pass to ride the Metro free for the entire day. Meet at 9:30AM at the Hollywood Blvd Metro Station entrance. Wear walking shoes, sun protection, dress for weather. Rain cancels.

Ldr: Gabe Sende 818-999-5384, TBA

February 24, Sun Hollywood Hike through Malibu Creek:

O:SFV/Intl Community

Come join us for a great hike to the old M.A.S.H. site. We'll visit the original location where the TV show was filmed. Hike is 5 miles rt with little or no elevation. Suitable for children of all ages. Meet us @ 9AM at the Woodland Hills Rideshare or 9:30AM at the trailhead. Take the Ventura Freeway to Los Virgenes Road. Continue to Mulholland and meet at the intersection. Rain cancels.

Ldr: Gabe Sende 818-999-5384. Co-Ld TBA:

Feb 24, 2013: Snow Moon walk. Sunday

Sierra Singles, San Fernando Valley (co-sponsor)

O through CSUN: Fortunately we won't worry about snow or hunger during this full moon walk. We'll see what the natives (The Matadors) founded in 1958 on 365 acres. We'll look for The Oviatt Library's American Flag, the CSUN Sculpture, The Historic Orange Grove, and any leftover lima-beans. This is a slow paced level walk, 3 - 4 miles rt, and approximately 2 hours. We meet 6:30pm, 9420 Reseda Blvd, Northridge. Join us afterwards for coffee and dessert, optional.

Leader Sandra Tapia 818.365.4571, Co-Leader: Gerri Montooth

April 21, 2013 Ethnic Dinner- Greek: Sun

Join us for a mouth-watering feast at one of the San Fernando Valley's finest Greek restaurants. Choose from a menu that includes vegetarian platters, salads, appetizers, pastas, and seafoods while trying to decipher the meaning of such exotic food names as fassolia, saganaki, keftethes, loukanika, and tzatziki. Ethnic entertainment will be provided. Approximate cost: \$25. For information and reservations, **contact Hosts: Julie and Gabe Szende at (818) 999-5384 or julieszende@gmail.com**

May 5, 2013 The LA Flower Market Sunday

O: Sierra Singles, San Fernando Valley

Join us as we tour the LA Flower Market, the largest flower market in the United States where virtually every variety of cut flower can be found, plus potted plants, dried and silk flowers and floral supplies. This is the time to buy your mom or yourself flowers for Mother's Day. We meet 9am at the Metro Red Line Entrance at 7th Street / Metro Center and then enjoy a walk to the Market. Walk is approx. 3-4 miles and 3-4 hours. Afterwards we will enjoy a late breakfast or early lunch and share our purchases. Wear good walking shoes; bring money for entrance (\$2.00), purchases, food and umbrella for drizzle. Heavy Rain cancels. Leader: **Sandra Tapia 818.365.4571**, Co-Leader Gerrie Montooth



Las Virgenes hike Feb 29, 2013

See write-up below

Photo by Sierra Club Member Gayle Dufour

MONDAY ACTIVITIES

Feb. 18: Cindy Reyes, California Wildlife Center

Community Meetings are Free to the Public)

Rockpointe Clubhouse: 22300 Devonshire Street, Chatsworth CA 91311

Cindy will discuss medical treatment and saving of wildlife. Each year the California Wildlife Center (CWC) provides for thousands of animals (land and marine,) medical treatment, rehabilitation, and release back into their natural environment. Many animal injuries are a direct result of urbanized environments. Education for homeowners, teachers, and students is another service CWC provides to help wildlife and humans co-exist. Come learn what to do if you find a sick, injured, or abandoned animal. www.cawildlife.org

Website: <http://ssmpa.com/> mail@ssmpa.com

TUESDAY HIKES

Hike Leaders phone #

Nancy Krupa (818)981-4799, Pixie Klemic (818)787-5420, M. Vernallis(818)360-4414, Gabe Szende 818-999-5384, Marcia Harris.310-828-6670, Charlotte Feitshans (818)818-501-1225, Peter Ireland 310-457-9783 (w) Sandra Tapia 818.365-4571, Rosemary Campbell (818)344-6869, Doug Demers(805)419-4094, Richard Pardi (818)346-6257. Dotty Sanford 805-532-2485, Rita Okowitz 818-889-9924, Virve Leps 310-477-9664. Reaven Gately (661)255-8873,

Mimi Knights (661)253-3414, Ted Mattock (818)222-5581,
Joe Phillips 818 348-8884, Stephen Beck 818-346-5759

Tues Moderate Easy Paced 4-6 Mile.

**For all hikes, bring 2 qts water, lunch, lugsoles, hat, & sunscreen.
RAIN CANCELS. Possible \$3-\$5 park fee**

February 5, 2012 Ahmanson Ranch Parklands:

O: (WA/SFV) Moderately paced 5 mile hike with 700' gain. Enjoy our recently acquired Santa Monica Mtns Conservancy land at the edge of the Simi Hills. Hike the rolling grassland hills of oaks and coastal sage and visit the old ranch house at Lasky Mesa. Meet 8:30 AM at Victory trailhead. From 101 Ventura Fwy take Valley Circle Bl. exit and go north to Victory Bl., about 2 miles. Turn left on Victory, go 1/2 mi. to fee parking area. Muddy when wet. Rain cancels. Leader: MARCIA HARRIS Asst: PIXIE KLEMIC

February 12 Stunt High Trail:

O: (WA/SFV) Moderately paced 6 mile 1000' gain hike through a beautiful riparian canyon and chaparral, with great sandstone outcroppings in the Santa Monica Mtns. Meet 8:30 AM Stunt High trailhead. From 101 Ventura Fwy take Valley Circle/Mulholland Dr exit south, turn right on Valmar Rd (becomes Old Topanga Cyn Rd), right on Mulholland Hwy for 3½ miles, left on Stunt Rd for 1 mile, park on dirt shoulder on right. Bring water, snack, lugsoles, hat, sunscreen. Rain cancels. Leader: PIXIE KLEMIC Asst: CHARLOTTE FEITSHANS

February 19 Las Virgenes Canyon into Ahmanson:

O: (WA/SFV) Moderately paced 6 mile 600' gain hike from Las Virgenes Canyon and into the eastern Ahmanson Ranchlands. Visit the riparian, grasslands, and oak woodlands communities in the beautiful Agoura Hills. Meet 8:30 AM at trailhead kiosk. From 101 Ventura Fwy take Las Virgenes Rd exit north 1+ mile to end, street parking. Rain cancels. Leader: RITA OKOWITZ Asst: PIXIE KLEMIC

February 26 Top of Reseda to Nike Site:

O: (WA/SFV) Moderately paced 5 mile, 600' gain hike along old dirt Mulholland to cold war Nike site. Great views of SF Valley and Encino Reservoir. Meet 8:30 AM at top of Reseda Blvd in Tarzana. From 101 Ventura Fwy take Reseda Blvd exit, turn south and go 3 miles to Mulholland Gateway Park. Choice to park along street below the white line at beginning of fee area or pay fee and park above. Meet at trailhead at the top Rain cancels. Leader: PIXIE KLEMIC Asst: VIRVE LEPS



Trippit Ranch, Musch Trail, monkey flower

Thurs. Hike Feb. 21-2013

See write-up below

photo by Sierra Club member Gayle Dufour

THURSDAY HIKES

Hike Leaders phone #

**Nancy Krupa (818)981-4799, Pixie Klemic (818)787-5420, M. Vernallis(818)360-4414,
Gabe Szende 818-999-5384, Marcia Harris.310-828-6670,
Charlotte Feitshans (818)818-501-1225, Peter Ireland 310-457-9783 (w)
Sandra Tapia 818.365-4571, Rosemary Campbell (818)344-6869,**

**Doug Demers(805)419-4094, Richard Pardi (818)346-6257.
Dotty Sanford 805-532-2485, Rita Okowitz 818-889-9924,
Virve Leps 310-477-9664. Reaven Gately (661)255-8873,
Mimi Knights (661)253-3414, Ted Mattock (818)222-5581,
Joe Phillips 818 348-8884, Stephen Beck 818-346-5759**

**For all hikes, bring 2 qts water, lunch, lugsoles, hat, & sunscreen.
RAIN CANCELS. Possible \$3-\$5 park fee**

Feb 7, 2013 Newton Canyon Backbone Trail:

O: (WA/SFV) Moderately paced 8 mile 1400' gain hike on scenic trail through oak woodlands and chaparral. Meet 8:30 AM Newton Canyon Trailhead (from 101 Ventura Fwy take Kanan Rd, exit 36, south to paved trailhead parking area on west side just north of Tunnel 1 (3rd tunnel from 101 about 1¾ miles past Mulholland Hwy). Leader: NANCY KRUPA Asst: STEPHEN BECK

Feb 14 Thu Moderate Hikers / Johnson's Motorway to Rocky Peak:

O: (WA/SFV) Moderately paced 9 mile 1700' gain hike on picturesque trail in Santa Susana Mtns. Meet 8:30 AM outside Iverson gate to Indian Springs Estates (from 118 Fwy take Topanga Canyon Blvd south in Chatsworth, turn right on Santa Susana Pass Rd and go about 1 mile to Iverson Rd (just past Rocky Peak Church), turn right, go ¼ mile and park on dirt shoulder outside gate. Leader: ROSEMARY CAMPBELL Asst: NANCY KRUPA

Feb 21 Trippet Ranch, Musch Trail, Eagle Rock Loop:

O: (WA/SFV) Moderately paced 8 mile 1200' gain hike in Topanga State Park. Meet 8:30 AM at Trippet Ranch parking lot (from 101 Ventura Fwy take Topanga Canyon Blvd, exit 27, south to Entrada Rd, turn left (east), go about one mile making two left turns to stay on Entrada Rd, and park along Entrada Rd outside lot or pay to park in lot). Bring \$ for parking, Rain cancels. Leader: TED MATTOCK Asst: NANCY KRUPA

Feb 28 Chumash Trail to Fossils:

O: (WA/SFV) Moderately paced 8 (optional 10) mile 1500' gain hike in rolling hills of Santa Susana Mtns. Meet 8:30 AM at trailhead. From 118 Fwy take Yosemite Ave, exit 29, north 0.4 mile, turn right on Flanagan Dr, continue 0.8 mile to end and park. Rain cancels. Leaders: REAVEN GATELY, MARGARET VERNALLI



King Gillette Ranchland

See write-up on activities below

Photo by Sierra Club hike leader Pixie Klemic

Visit the King Gillette Ranch Visitor Center free parking for 2 hours

The visitors center is a very enjoyable experience with a lot of hands on exhibits regarding the Santa Monica Mountains. There is, also, a fun short hike up a hill with great views in all directions. The photo above was taken from this hill.

Interpretive Programs & Misc

These programs below are a project of the Mountains Recreation and Conservation Authority in cooperation with Santa Monica Mountains Conservancy, California State Parks, and National Park Service. Come Visit their visitor center at King Gillette Ranch.

[King Gillette Ranch Directions & Info.](#)

(818) 878-0866 x228 RAIN CANCELS \$7.00 parking

26800 Mulholland Hwy. Calabasas, CA 91302

From 101 Ventura Fwy take Las Virgenes Rd/Malibu Canyon exit, go south approx. 5 ¾ miles to Mulholland Hwy. Turn left on Mulholland and then right to enter the long eucalyptus alleé driveway for Ranch.

Sat, February 2nd at 3pm

Living in the Sticks

Meet the Dusky-Footed Woodrat on his own turf. We will take you on a tour of the neighborhood where they build elaborate nests that are both a home and a time capsule. Easy 1 mile walk. Meet at the parking lot to left of pond, 2 hours.

Sat, February 9th at 10am

Innovation in the Golden Era

King Gillette Ranch was home to MGM Director Clarence Brown who made movies on this still popular filming location. Look behind the scenes at his filmmaking innovations and Hollywood parties on this easy walk. Meet at the parking lot to left of pond, 2 hours.

Sat, February 9th at 2pm

Capture a Nature Moment,

Nature offers the best photo opportunities, but can be a difficult model. Learn the tricks of nature photography on an easy walk. Bring your camera. Meet at the parking lot to the left of the pond, 2 hours.

Sat, February 16th at 1pm

A Stroll Through the Seasons

Enjoy a gentle walk through the native plant garden, where we will observe how plants and animals change with the seasons. Meet inside the Santa Monica Mountains Interagency Visitor Center. 30 minutes.

Sat, February 16th at 1pm

Weaving Our Way Through King Gillette Ranch

Fill your heart and hands with Chumash weaving culture and technique. Try it yourself; materials provided. Meet at the parking lot to left of pond, 2 hours.

Sat, February 23rd at 2pm

A Walk into the Chumash World

Discover how local Chumash Indians have used natural resources of their environment for thousands of years to create a sustainable way of life on this easy 1 mile walk. Meet at the parking lot to left of pond, 2 hours.

SUBSCRIBE

<http://lists.sierraclub.org/SCRIPTS/WA.EXE?A0=ANGELES-SFV-NEWS>

UNSUBSCRIBE:

To unsubscribe from the ANGELES-SFV-NEWS list, send any message to: ANGELES-SFV-NEWS-signoff-request@LISTS.SIERRACLUB.ORG Check out our Listserv Lists support site for more information: <http://www.sierraclub.org/lists/faq.asp>

Sign up to receive Sierra Club Insider, the flagship e-newsletter. Sent out twice a month, it features the Club's latest news and activities. Subscribe and view recent editions at <http://www.sierraclub.org/insider/>