



HELLO, I AM MYRNA HAYES

- I AM MYRNA OF MARE ISLAND!
- RESTORATION ADVISORY BOARD COMMUNITY CO-CHAIR FOR 27+ YEARS
- CO-FOUNDER, MARE ISLAND SHORELINE HERITAGE PRESERVE
- VOLUNTEER PRESERVE MANAGER, 2007-2019
- PRESIDENT, MARE ISLAND HERITAGE TRUST
- REPRESENTATIVE FROM REDWOOD CHAPTER, SIERRA CLUB ON THE 3-CHAPTER SEA LEVEL RISE COMMITTEE



**I CAME TO MARE ISLAND 27 YEARS AGO
AND FELL IN LOVE**

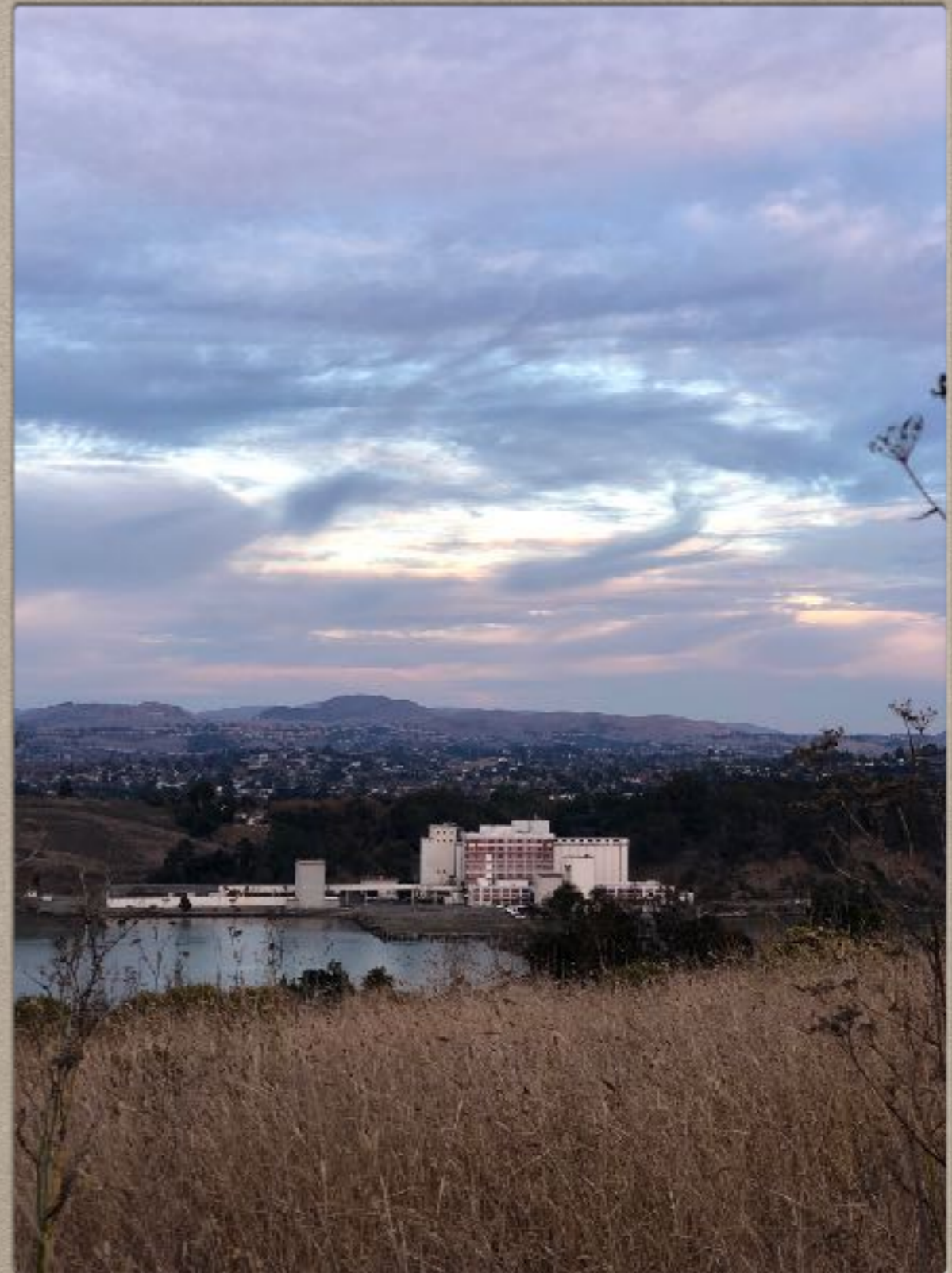


MARE ISLAND OF MY DREAMS

- HOW A SMALL PENINSULA, ONCE AN ISLAND SURROUNDED BY THOUSANDS OF ACRES OF "SWAMP LANDS" HAS MANAGED TO CONSUME MOST OF MY ADULT LIFE
- I HOPE TO INSPIRE YOU TO FIND MARE ISLAND FINDING ITS WAY INTO YOUR OWN DREAMS

**MARE ISLAND SHORELINE
HERITAGE PRESERVE: WHERE
IS IT? WHAT IS IT? AND WHAT'S
AT STAKE ISLANDWIDE?**

- **A PLACE OF PEACE AND SOLITUDE BRIMMING WITH HISTORY, NATURE AND SCENIC VISTAS ADJACENT TO GROWING DEVELOPMENT PRESSURES**
- **ON THE ISLAND, THERE'S AN OPPORTUNITY TO EXPAND THE PRESERVE IN A NETWORK OF WILD LANDS TO THE WEST AND NORTH ALONG THE SAN PABLO BAY AND NAPA RIVER SHORES**





CONVERT OR CONSTRUCT...WHERE DOES RESOURCE PROTECTION FIT IN? HOW DO WE CONVEY OUR VALUES?

- AN ISLANDWIDE SPECIFIC PLAN UPDATE HEADED BY THE CITY'S NEW ISLAND-BASED MASTER DEVELOPER LOOMS**
- HOW WILL NATURAL, ARCHEOLOGICAL, CULTURAL AND HISTORIC RESOURCES FARE WITH COMPETING INTERESTS OF PERCEIVED GREATER ECONOMICS?**



POISED ON THE "NORTH SHORE"

- **IN THE LARGER REGIONAL CONTEXT MARE ISLAND IS A LYNCHPIN FOR THE REGIONAL RESPONSE TO SEA LEVEL RISE ADAPTATION AND A POSSIBLE COOLER RETREAT AND HAVEN FOR WILDLIFE RESPONDING TO CLIMATE CHANGE IN THE SONOMA AND NAPA VALLEYS TO THE NORTH**

**THE MARE ISLAND PRESERVE IS SITUATED
AT THE MOUTH OF THE NAPA RIVER. IT'S
ON THE "ORIGINAL" MARE ISLAND, PRIOR
TO NAVY FILLING OVER 150 YEARS**







Mare Island Shoreline Heritage Preserve



**ONLY OPEN SPACE PARK IN THE TOWN
SOLANO COUNTY IS THE ONLY BAY AREA
COUNTY WITH NO OPEN SPACE DISTRICT, HAS
NO NATIONAL PARK AND ONLY ONE STATE PARK**

POCO A POCO-
little by little- **PARK**

**WHEN THE CITY OF
VALLEJO COULDN'T
OPEN THE PRESERVE
DUE TO BANKRUPTCY,
IN 2008, WE DID.**

**LITTLE BY LITTLE WE
CREATED A LOVELY
AND MAGIC SPOT**



IN 2008 WE FOUNDED A NON PROFIT OPERATED PARK BECAUSE THERE WAS NO REGIONAL PARK OR COMMUNITY PARK DESIGNATION

- **The City of Vallejo has jurisdiction over the property as the State Lands "Granted Lands" manager**
- **The City has never designated the Preserve as a park**
- **Most of the City's community parks are managed by a separate Recreation District**



MORE THAN A PARK- A NATURE AND CULTURAL HISTORY WILDLANDS COMMUNITY

Our key purpose is to provide a nature and cultural history wildlands park open to the public at no cost



SCENIC VISTAS

7-COUNTY PANORAMAS



ANCIENT STRUCTURES

**Remind us of past
industrial uses and
invite us to reflect on
life in another era**





MARE ISLAND SHORELINE HERITAGE PRESERVE

- **FOR THE 12 YEARS THAT WE MANAGED THE PRESERVE, IT WAS OPERATED PRIMARILY BY VOLUNTEERS WITH NO FINANCIAL SUPPORT FROM THE CITY OF VALLEJO**
- **WITHOUT AN AGREEMENT IN PLACE WITH THE CITY, WE COULD NOT RAISE FUNDING FROM MANY GOVERNMENTAL AND PRIVATE SOURCES SUCH AS BOND ACTS AND GRANTS.**



**FORMER NAVAL AMMUNITION DEPOT
BUILT ON THE SHORE AND INTO THE HILLSIDES
AND BLUFFS OF THE ORIGINAL MARE ISLAND**



THE HISTORIC SOUTH SHORE

OLDEST MAGAZINES BUILT 1857-1860

LISTED ON THE NATIONAL REGISTER OF HISTORIC PLACES



**NAVY AMMO DEPOT WORKERS HOUSING
ESSENTIAL PERSONNEL CIVILIAN AND OFFICERS
UNDER BUREAU OF ORDNANCE**



THE FORMER AMMO DEPOT

**VERY SOLID BUILDINGS GENERALLY NOT SUITABLE
FOR MODERN BUILDING USE WITHOUT MAJOR
AND EXPENSIVE INVESTMENT**



WESTERN MAGAZINE AREA

**SLATED FOR ADDITION TO THE PRESERVE, HISTORIC AND
LOCATED ON OR NEAR SEA LEVEL, WITH NO UTILITIES, NOT
VIEWED AS PRACTICAL FOR TRADITIONAL USE INCOME SOURCES**



SAN PABLO BAY TRAIL

MARE ISLAND HERITAGE TRUST IS THE DAY-TO-DAY MANAGER OF THE TRAIL TO THE NORTHWEST OF THE PRESERVE

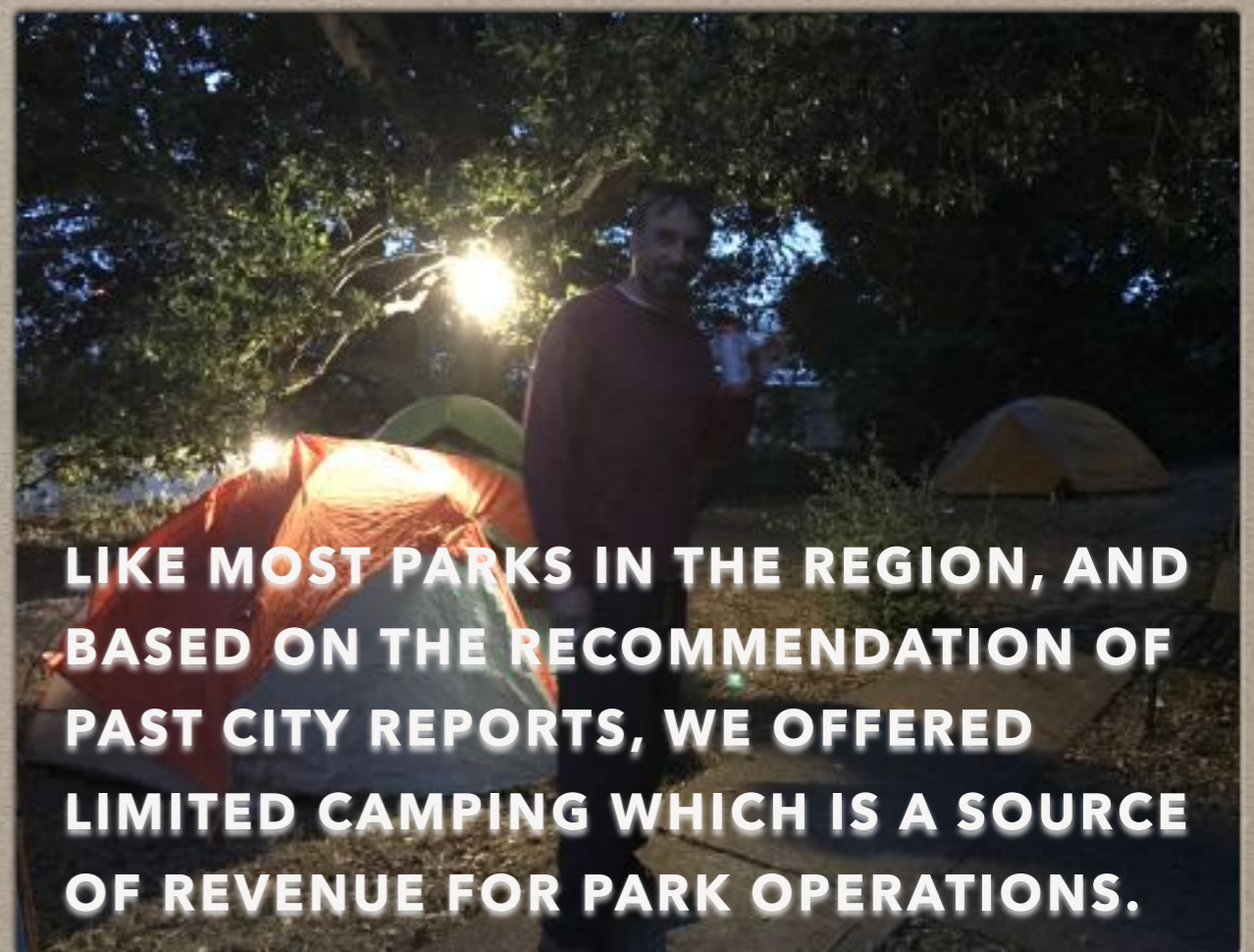


**THE PRESERVE TURNED 13 IN APRIL
TWO DONATION BARRELS WERE SOURCE OF
SUPPORT FROM THOSE ABLE TO CONTRIBUTE
AND ENSURE THAT THE PRESERVE WAS FREE!**

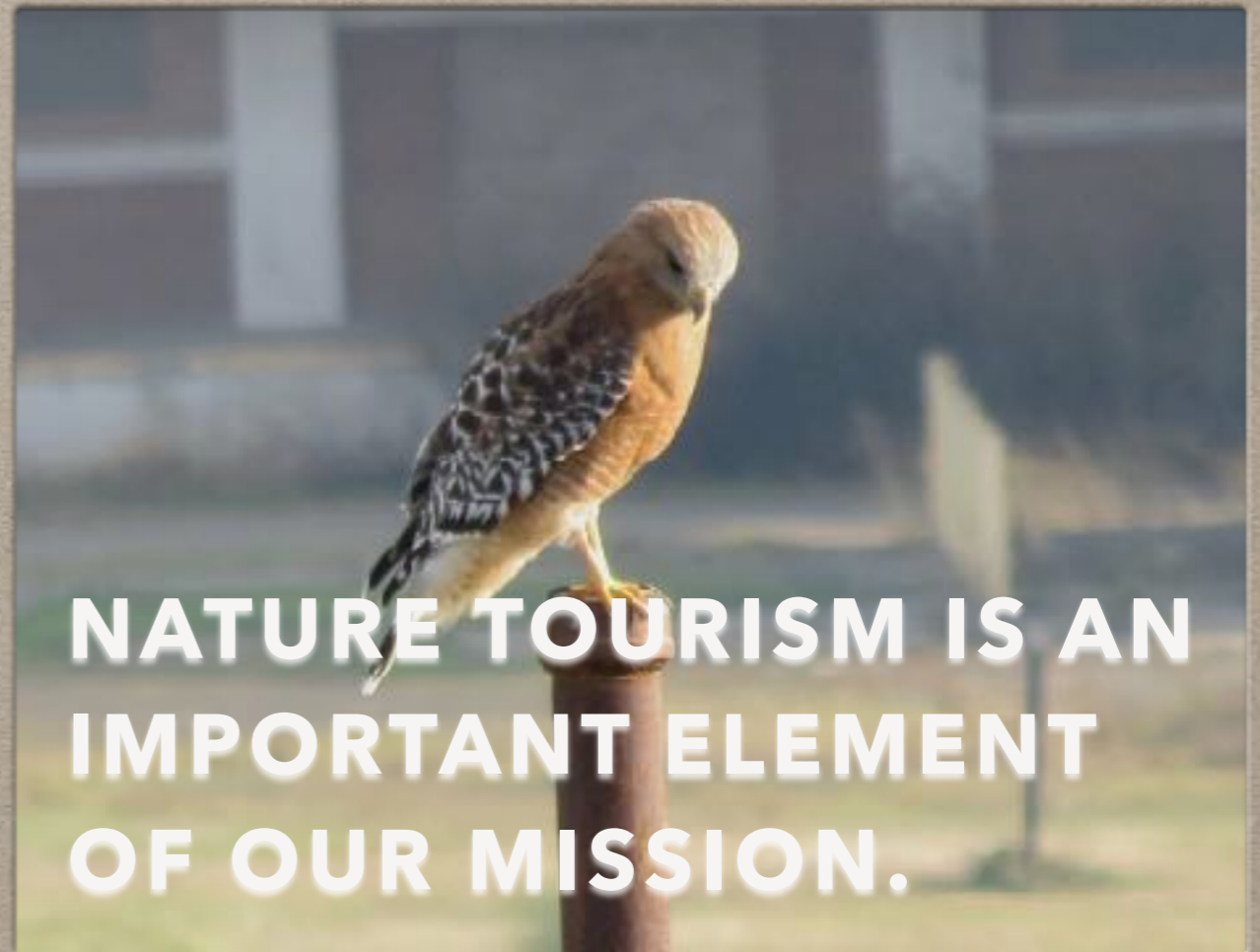
GUIDED TOURS

GUIDED HISTORIC AND
BIRD WATCHING HIKES
AND EXPLORATION ARE
POPULAR





LIKE MOST PARKS IN THE REGION, AND BASED ON THE RECOMMENDATION OF PAST CITY REPORTS, WE OFFERED LIMITED CAMPING WHICH IS A SOURCE OF REVENUE FOR PARK OPERATIONS.



**NATURE TOURISM IS AN
IMPORTANT ELEMENT
OF OUR MISSION.**











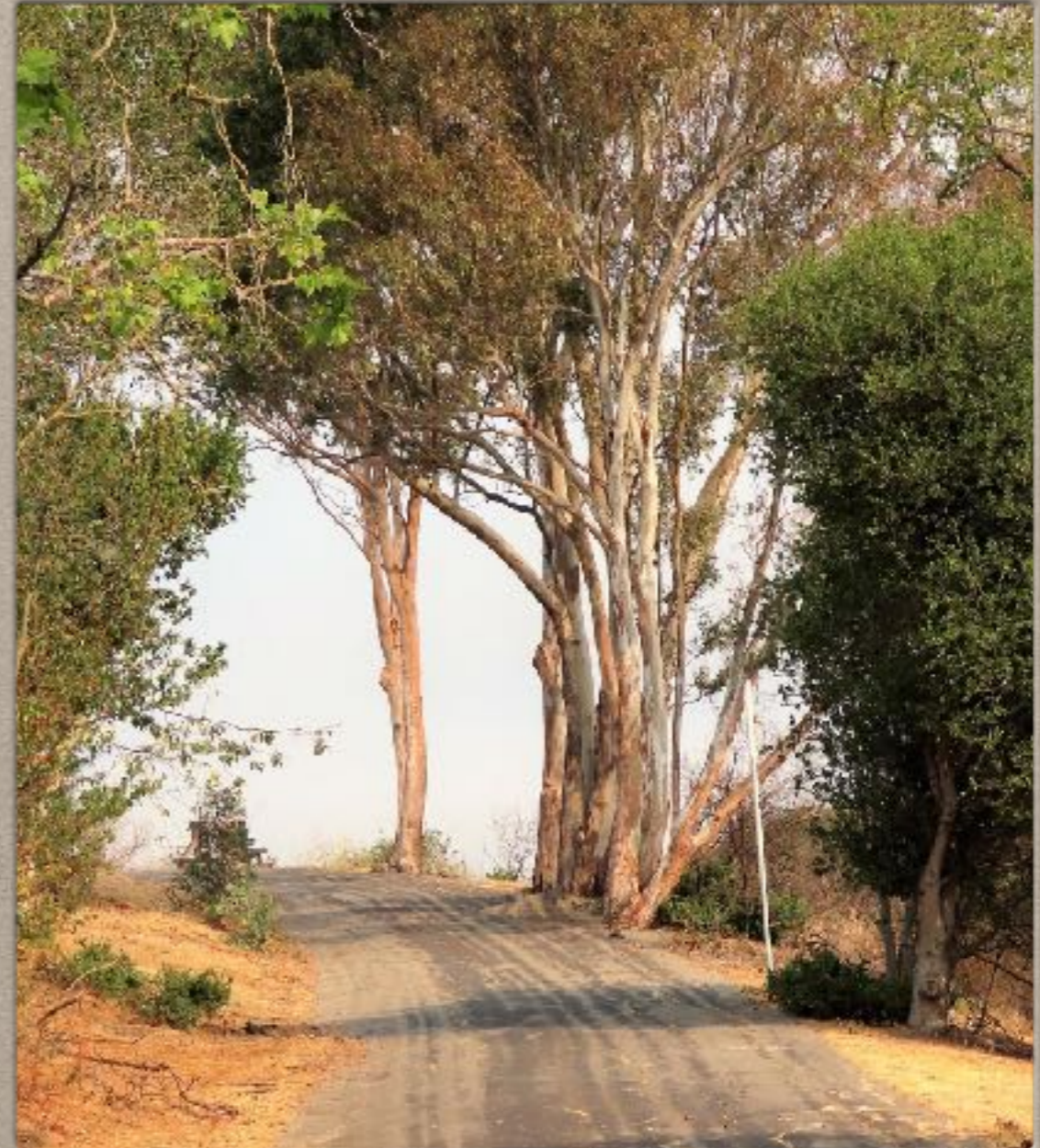


MARE ISLAND PRESERVE TODAY

- **SEPTEMBER 2019 MARE ISLAND HERITAGE TRUST DISMISSED AS MANAGERS OF THE PRESERVE**
- **2020 REOPENED UNDER MANAGEMENT OF THE CITY OF VALLEJO PUBLIC WORKS DEPT. WHICH HAS STRIPPED HISTORY AND NATURE FROM THE PROPERTY**

WHAT WENT WRONG? HOW WE LOST OUR NATURE PRESERVE COMMUNITY

- **January 2018 a new City Manager set out to destroy our “wildlands community gathering park”**
- **He envisioned downgrade to a “jogging trail” and our removal as managers.**



WHAT WENT WRONG? THE POWER OF STAFF TO WRECK AN OPEN SPACE

- January 2019 the new Fire Chief stated, "Things are going to change around here. Rich people are buying this Island. And, they don't like the way you run this park."





WHERE DO WE GO FROM HERE? YOUR THOUGHTS?

- **MISTAKE MADE BY A FORMER CITY MANAGER MUST BE CORRECTED**
- **RETURN TO THE VIBRANT WILDLANDS COMMUNITY, NOT JUST A JOGGING TRAIL**
- **WITH PUBLIC WORKS IN CHARGE NOT SUSTAINABLE FOR THE RESOURCES OR FOR THE CITY**
- **JUST MAKES SENSE TO PARTNER WITH THE FOUNDING LAND TRUST**

SO, WHY IS IT IMPORTANT THAT WE RETURN SOON?

- OUR LAND TRUST FOUNDED AND FUNDED THE PRESERVE FOR 12 YEARS AND SERVED ON THE MAYOR'S TASKFORCE TO DEVELOP A PLAN FOR 4 YEARS PRIOR
- WE UNDERSTAND THE COMPLEXITY OF THE RESOURCES AND HAVE A PROVEN MANAGEMENT MODEL
- THE PUBLIC WANTS US TO
- PUBLIC WORKS DEPARTMENT IS NOT SUITED TO RUN A NATURE AND HISTORY PRESERVE





WHAT YOU CAN DO TO HELP RESTORE MANAGEMENT OF THE PRESERVE TO OUR LAND TRUST

- SIGN OUR PETITION TO THE MAYOR AND CITY COUNCIL
@MAREISLANDPRESERVE.COM**
- WRITE TO THE MAYOR AND CITY COUNCIL EXPRESSING YOUR DESIRE FOR THE PRESERVE'S MANAGEMENT TO RETURN TO THE MARE ISLAND HERITAGE TRUST**

MORE WAYS YOU CAN HELP

- **Write a letter to the editor of local papers and more regional papers**
- **Contact regional radio/TV**
- **Write to your local Sierra Club Group and Chapter. Ask them to join together as a national environmental organization engaging other regional and statewide Chapters and Groups in our effort to protect this fragile land and the adjacent open spaces.**
- **Since the Preserve is State Lands "granted land" contact the State Lands Commission members and elected State Representatives expressing your concern for the resources.**





OUR MAYOR IS A LONG-TIME ALLY

- **REALITY IS THAT'S NOT ENOUGH**
- **HELPED ELECT TWO SUPPORTIVE COUNCIL MEMBERS AND A MAYOR IN 2020, BUT WE DON'T HAVE MAJORITY SUPPORT FOR OUR RETURN**
- **YOU CAN HELP ELECT 1 MORE COUNCIL MEMBER IN NOVEMBER 2022**



WRITE TO THE VALLEJO MAYOR AND CITY COUNCIL WITH THIS SIMPLE MESSAGE:

PLEASE, WILL YOU RETURN TO YOUR PAST SUPPORT OF OUR COMMUNITY-BASED MARE ISLAND SHORELINE HERITAGE PRESERVE? WE ENCOURAGE YOUR STRONG DIRECTION AND CITY STAFF COMMITMENT TO THE RETURN OF THE MARE ISLAND PRESERVE'S MANAGEMENT TO THE SKILLED AND TRUSTED LAND TRUST WHO FOUNDED AND OPERATED IT FOR 12 YEARS. RETURNING THE PRESERVE'S CARE TO THE MARE ISLAND HERITAGE TRUST WILL ENSURE THAT OUR NATURE AND CULTURAL HISTORY PARKLANDS WILL BE CAREFULLY CARED FOR, ONCE AGAIN.

**MYRNA HAYES, PRESIDENT
MARE ISLAND HERITAGE TRUST
MYRNAHAYES@MAC.COM
707-249-9633**

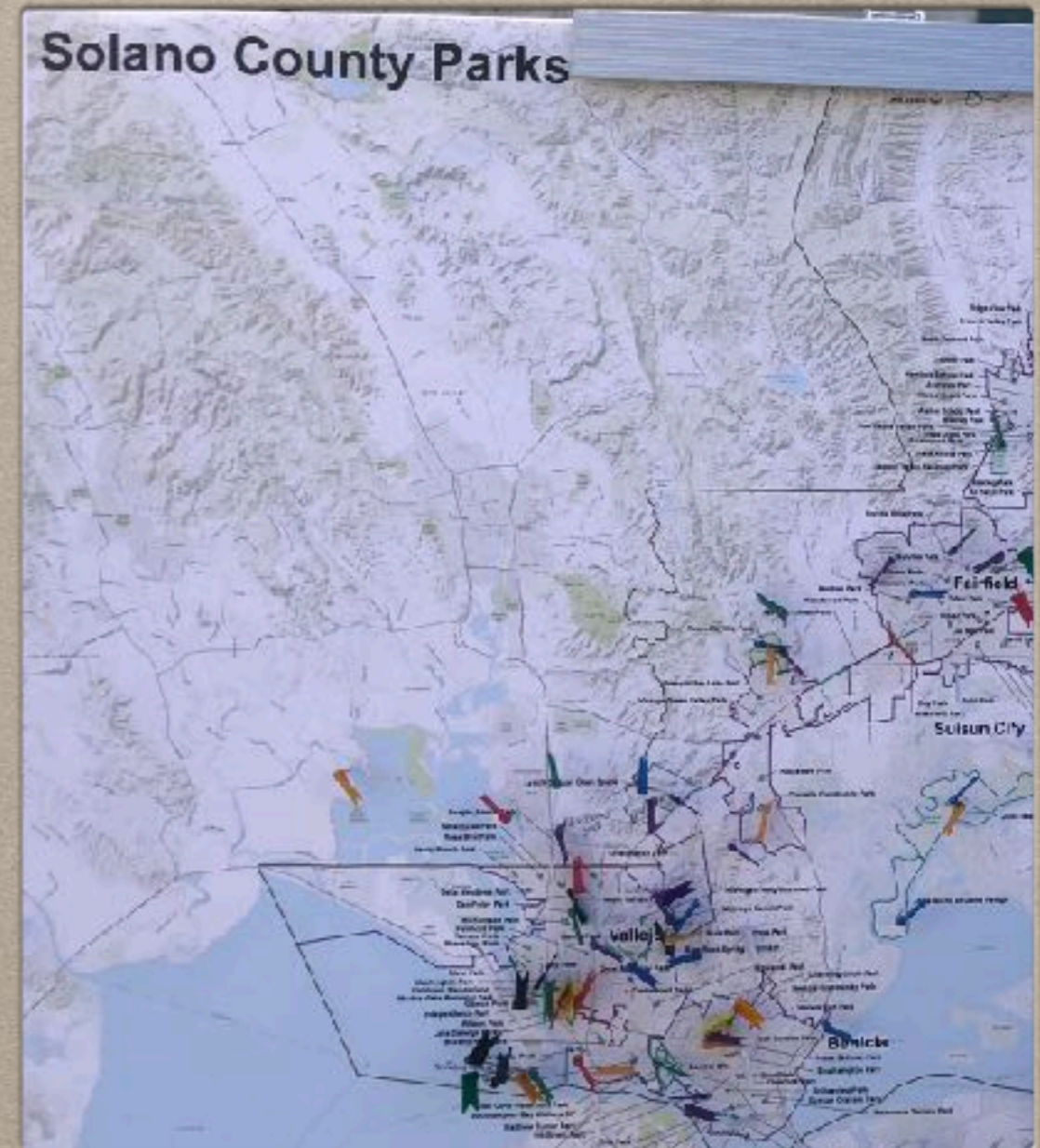


WHAT YOU CAN DO...MAKE AND LEVERAGE DONATIONS

- **MAKE A DONATION FROM A DONOR ADVISED FUND, IRA OR OTHER PERSONAL FUNDS AT MAREISLANDPRESERVE.COM**
- **ASK OTHERS TO JOIN YOU**
- **ASK A GROUP YOU ARE A MEMBER OF TO MATCH EXISTING FUNDS**
- **NOTIFY US WHEN YOU RUN ACROSS A SOURCE OF UNRESTRICTED FUNDS**

ENGAGE IN THE MARE ISLAND SPECIFIC PLAN UPDATE PROCESS

- Before the Specific Plan is issued, write to the Master Developer Nimitz Group/ Southern Land Co.
- Tell them how important the protection and expansion of the Preserve is to you and the local and regional community
- Write this same message to Letters to the Editor and the Mayor and Council



MAKE A DIFFERENCE IN THE MARE ISLAND SPECIFIC PLAN UPDATE

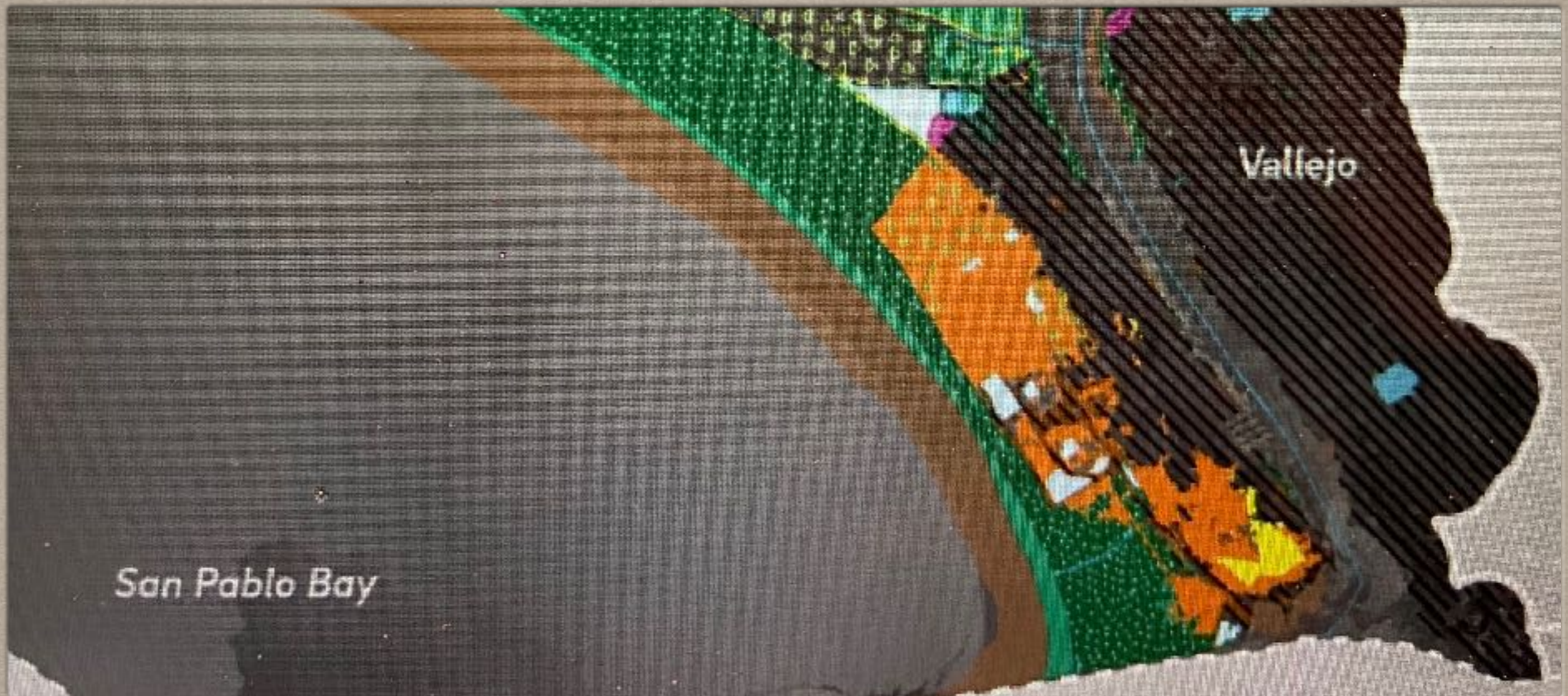
- Tell the Developer right now, ***before*** the Specific Plan is released, that you want the current open space retained and protected in the Update
- This includes the former golf course and the vast marsh areas to the West and the Napa River's edge
- Urge them to limit plans for trails in and adjacent to marshes on the Bay and River's Edge to keep these bands of wilderness as wildlife corridors





HELP TO ORGANIZE AND LEAD HIKES AND GATHERINGS

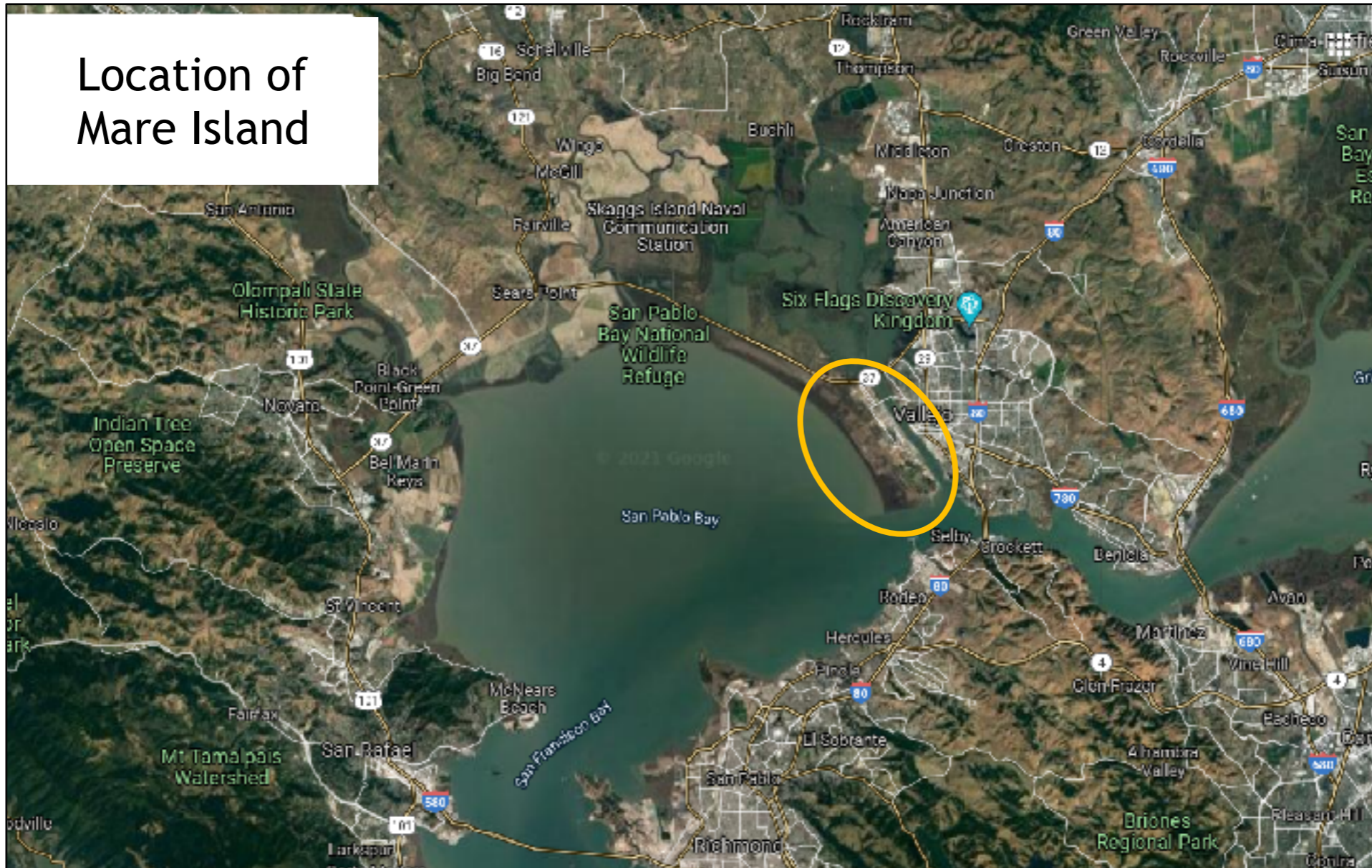
- EDUCATE AND INFORM THE PUBLIC ABOUT THE SPECIFIC PLAN PROCESS
- ENGAGE PEOPLE WHO CARE ABOUT MULTIPLE ISSUES HOUSING, OPEN SPACE, NATURE, HISTORY, CLIMATE CHANGE, SEA LEVEL RISE, SUSTAINABILITY
- WORK TOGETHER TO CRAFT COMMENTS REGARDING THE SPECIFIC PLAN INTEGRATING ISSUES THAT MATTER TO COMMUNITY PARTICIPANTS



GET INFORMED ABOUT SEA LEVEL RISE ADAPTATION AND HOW IT CAN BE APPLIED TO MARE ISLAND

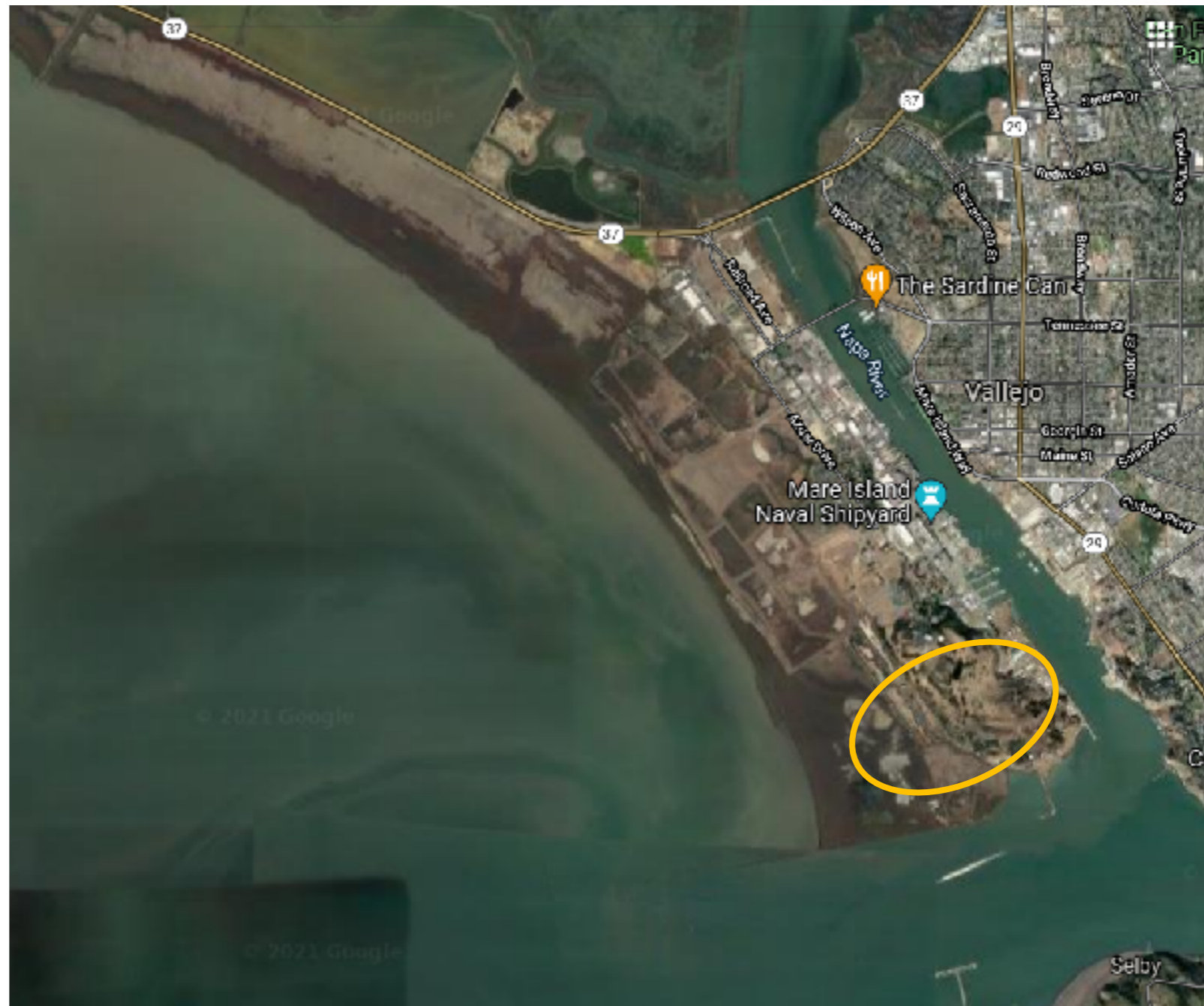
- **TEAM UP WITH OTHERS TO REVIEW THE SAN FRANCISCO BAY SHORELINE ADAPTATION ATLAS AND "GROUND TRUTH" IT**
- **WRITE TO THE AUTHORS ABOUT AREAS OF MARE ISLAND THAT CAN BENEFIT FROM ATLAS REFINEMENT**
- **HELP TO INTEGRATE THE ATLAS AND ITS IMPLICATIONS INTO THE MARE ISLAND SPECIFIC PLAN**

Location of Mare Island

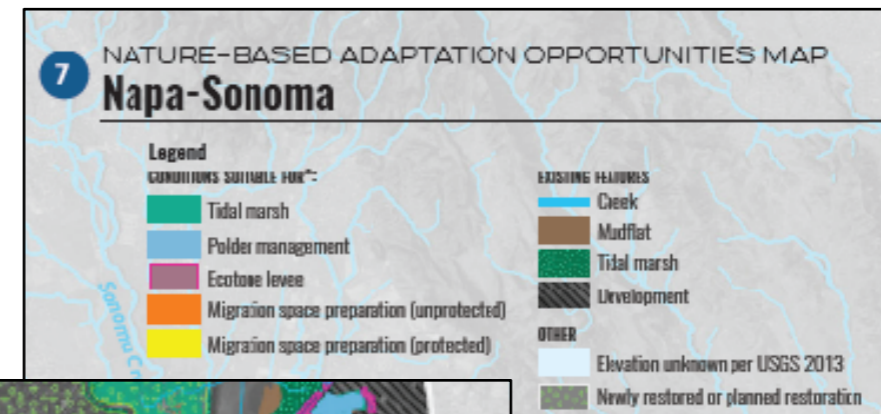
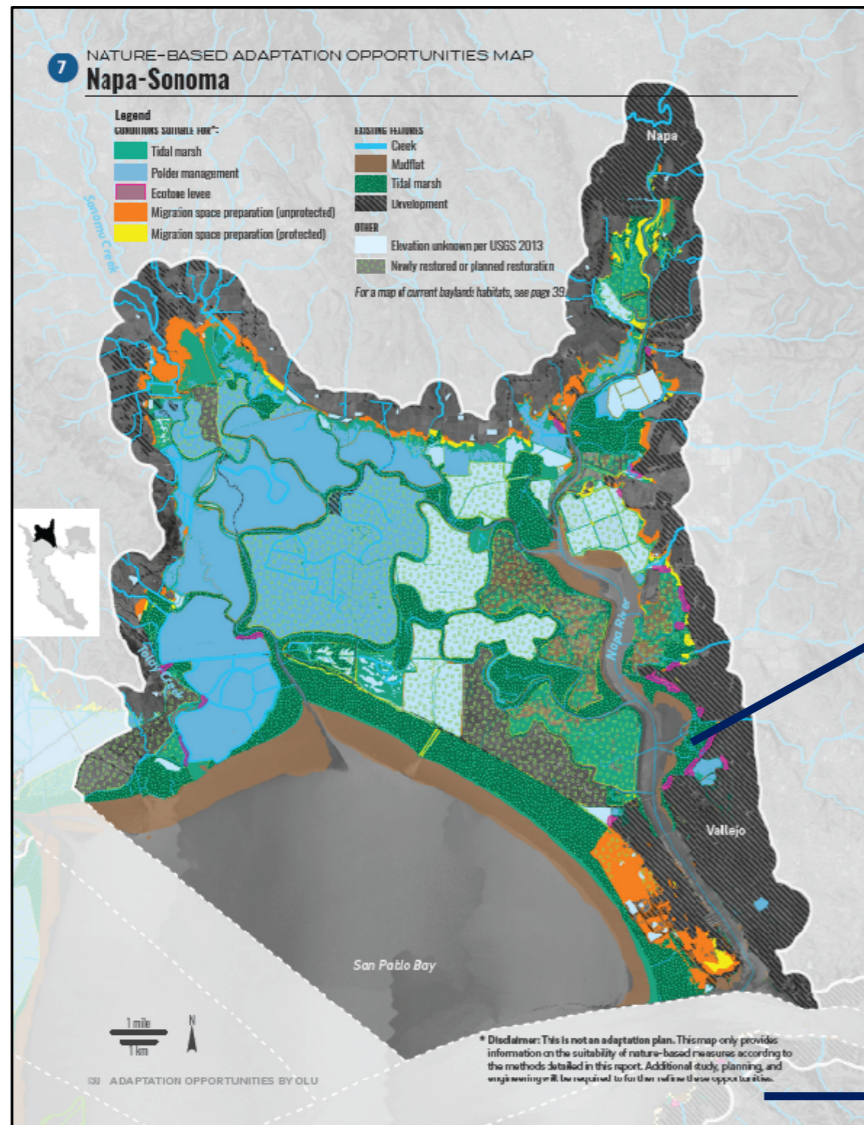


Mare Island and its Preserve

- Faces current driven by the Pacific Ocean
- Adjoins the mouth of the Napa River
- Is north edge of the mouth of Carquinez Strait
- 40% of California's water flows through the Carquinez Strait into the Bay
- Preserve located at southern end of Island

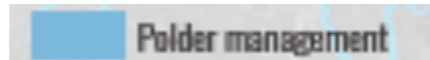


SF Bay Shoreline Adaptation Atlas, OLU #7, Napa Sonoma: Mare Island Area



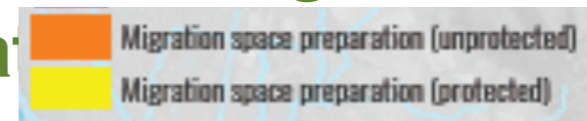
Potential Sea Level Rise Shoreline Adaptation Opportunities for Mare Island

DEFINITION: Polders

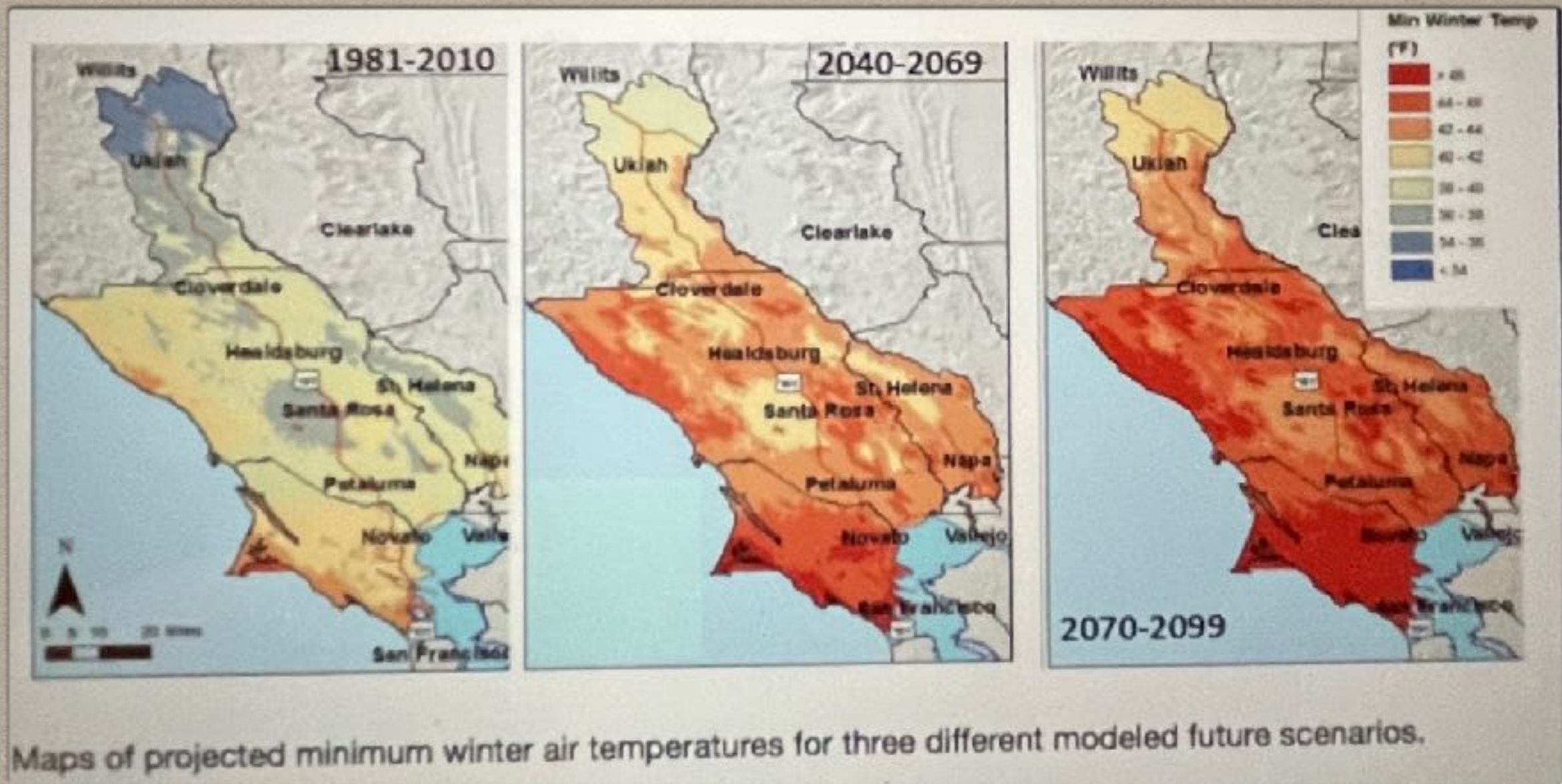


Polders are low-lying areas of land that would normally be inundated by regular tides if they were not protected by dikes. Polders are the diked, ditched, and drained historical marshes and mudflats that are locally known in San Francisco Bay as “diked baylands.” Land uses within the polders vary: there are salt ponds in the North and South Bays, hay fields in San Pablo Bay, flood retention basins such as Palo Alto Flood Basin, and significant residential areas in the Central Bay such as Alameda Island, Foster City, and Redwood Shores. In many areas, the low-lying land within polders is used for infrastructure, including roads, rail lines, wastewater

DEFINITION: Migration Space Preparation



Migration space in this report refers to areas at appropriate topographic elevations that could support estuarine-upland transition zones now and in the future with sea level rise. These are often natural wetland-upland transition zone areas adjacent to present and potential marshes that could be protected, enhanced, or restored to allow marshes to migrate landward as sea level rises. Lands that provide migration space are scarce and in demand as they are generally situated between the lower limits of developed upland areas and the upper limits of diked or



REGIONAL IMPACT OF MARE ISLAND OPEN SPACE PROTECTION

- MODELING ALREADY SHOWS CLIMATE CHANGE WILL IMPACT SPECIES IN UPPER REACHES OF THE COUNTIES TO THE NORTH-MANY WILL ONLY SURVIVE BY MIGRATION TO COOLER OPEN SPACE AREAS
- [HTTP://WWW.NORTHBAYCLIMATE.ORG](http://www.northbayclimate.org)
- MARE ISLAND IS A RETREAT FROM THE HEAT ONLY WITH WILDLIFE CORRIDORS
- MARE ISLAND OPEN SPACES MUST BE PROTECTED FOR WILDLIFE FIRST
- NO ORGANIZATION CURRENTLY WORKING ON THESE ISSUES FOR MARE ISLAND

STAY VIGILANT, PERSEVERANT, HOPEFUL

RECOGNIZE AND ACKNOWLEDGE SIGNS OF CHANGE

- **Two new Island wayfinding signs for the Preserve**
- **For the 1st time in 14 years, our Preserve made it onto the Island direction signs with top billing!**

