



It's Our Nature

Fox Valley Group of the Sierra Club - Wisconsin Chapter Vol. 24 Issue 3

Fox Valley Group Meetings

January 9, 2025 - 7:00pm
RENEW Wisconsin

(This is a Zoom meeting - check the website or Facebook for link)

Did you know that Wisconsin has a nonprofit organization based out of Madison that promotes renewable energy? Meet RENEW Wisconsin! More info on page 3.

February 13, 2025- 7:00pm
Native Urban Landscaping

Ron Jones and Everett Grosskopf from the Wild Ones Fox Valley Chapter will get us started on designing and planting a native urban landscape that doesn't cause concern with your neighbors and local officials. They can also help answer your native planting questions. Wild Ones is a national organization which celebrates and promotes the use of native plants in home and civic landscaping. Think spring!

March 13, 2025 - 7:00pm
Off trail in the Grand Canyon

Presented by Paul Kuenn. A 1975 foray into rock climbing in northern Minnesota led Paul to become an alpine climbing guide in 1980. Paul has climbed from Peru & Ecuador to Alaska and the NW Territories and has made trips to climb & trek in Nepal, Norway, France, Scotland and England. Closer to home he can be found on the rocks of Wisconsin and most of the winter climbing ice along the shores of Lake Superior. After completing the Pacific Crest Trail in 81' he began his off- trail forays into the Canyons of the southwest. When not climbing, he is either retrofitting older homes to make them zero energy or taking care of lighthouses with his spouse Jude.

April 10, 2025 - 7:00pm
Habitat Restoration at Joliet Park in Green Bay
Tentative - more details to come

All programs, except for January's Zoom, are at the Girl Scout Building
(next to Bubolz Nature Preserve)
4693 N. Lynndale Drive, Appleton

Details and subject can change. Follow us at -
www.sierraclub.org/wisconsin/fox-valley
or www.facebook.com/foxvalleysierra

Meetings and Outings are open to the public

From the Chair

November 2023

I had hoped to write a much different "note from the chair;" one filled with the promise of moving forward on matters of our precious environment and of social justice. For many of us, this election was a huge setback and a devastating reminder of the work that remains to be done. A friend sent this to me the morning after the election. May you find in these words, the inspiration to continue your conservation and environmental justice work

Penny Paiser Wilson
Fox Valley Sierra Group Chair

*You are awakening to the same country you fell asleep to.
The very same country.
Pull yourself together.
And,
when you see me,
do not ask me
"What do we do now?"
How do we get through the next four years?"
Some of my Ancestors dealt with
at least 400 years of this
under worse conditions.
Continue to do the good work.
Continue to build bridges not walls.
Continue to lead with compassion.
Continue the demanding work
of liberation for all.
Continue to dismantle broken systems,
large and small.
Continue to set the best example
for the children.
Continue to be a vessel of nourishing joy.
Continue right where you are.
Right where you live into your days.
Do so in the name of
The Creator who expects
nothing less from each of us.
And if you are not "continuing"
ALL of the above,
in community, partnership, collaboration?
What is it you have been doing?
What is it you are waiting for?*

~Venice Williams~

To Explore, Enjoy and Protect the Wild Places of the Earth

*The Environment and Earth needs You! And We Need You Too! Help us as a group move forward. Become involved!
Join the Fox Valley Sierra Group board. It's fun, rewarding and necessary. Contact one of our board members.*

Hope, Unity and Action: Environmental Organizations React to the 2024 Presidential Election Results

by Karen Van Offeren

"When we fight, we win. Sometimes the fight takes a while, but that doesn't mean we won't win. The important thing is to never stop trying to make the world a better place."

Kamala Harris, excerpted from her 2024 presidential concession speech

Many environmental organizations have echoed Vice President Harris' sentiment since the reelection of Donald Trump on November 5th. A sampling of environmental post-election reactions follows.

From Sierra Club Executive Director Ben Jealous:

"This is a dark day, but despite this election result, momentum is on our side. The transition away from dirty fossil fuels to affordable clean energy is already underway. Trump can't change the reality that an overwhelming majority of Americans want more clean energy, not more fossil fuels. Through investments in the Inflation Reduction Act we are creating millions of new clean energy jobs. Clean energy is already cheaper in most cases than dirty fossil fuels, and wind and solar now generate more power in the US than coal.

"When we come together, we are stronger than Donald Trump, and we will not let one climate denier in the White House erase all the progress we have made. Our movement is bigger, bolder, and more diverse than it's ever been. We will be a force of nature and use every tool at our disposal to defend our democracy and critical environmental protections, and continue to build toward the clean energy economy and future we need."

Excerpted from the November 6, 2024 press release
<https://www.sierraclub.org/press-releases/2024/11/sierra-club-statement-we-will-be-force-nature-defending-our-communities-and>

From League of Conservation Voter's President Gene Karpinski:

"The outcome of the election is deeply disappointing, but the clean energy economy is here to stay. Trump's attacks on clean energy and his plans to enact Project 2025's dangerous agenda are extremely unpopular. We applaud all the climate champions who ran this year and are grateful to everyone who worked so hard.

We are fiercely committed to defending people and the planet and we know how to fight back against what is coming. After 2016 we focused on making progress in the states and blocking Trump's most extreme policies and appointments. States are even more powerful now and can continue to make progress while also pushing back on Trump. We will fight against the extreme MAGA Republicans' agenda to not only gut the Inflation Reduction Act, protections for our clean air, clean water, and our public lands, but also our voting rights, our reproductive rights, immigrant rights, and our democracy itself. These attacks are bad policy and bad politics, and we will fight like hell to stop them at the federal level while continuing to advance progress at the state and local level."

Excerpted from the November 8, 2024 This Week in Climate Action
<https://www.lcv.org/media-center/this-week-in-climate-action-november-8-2024/>

From National Wildlife Federation's President and CEO Collin O'Mara:

"The voters have spoken, and now the hard work continues to stand up for wildlife, frontline communities, and future generations. We will find common ground when possible to recover wildlife, confront the climate crisis, and address generational environmental injustices, but we are also clear-eyed about how several campaign promises of the president-elect could adversely affect wildlife habitat and communities. The stakes could not be higher, and we will work in concert with our state and territorial affiliates, our seven million members and supporters, and our allies in Congress to defend our bedrock conservation laws, safeguard wildlife and our irreplaceable natural resources, uphold our democratic principles, and make progress on our priorities wherever possible."

Excerpted from the November 6, 2024 press release
<https://nwf.org/Home/Latest-News/Press-Releases/2024/11-6-24-Presidential-Election>

From World Wildlife Fund's President and CEO Carter Roberts:

"As we transition to a new administration, now is the time to renew our call to protect our planet as the most singular foundation for prosperity and security—not just for Americans but for all people and for all life on Earth.

"We know that the majority of Americans support taking actions to protect our environment, and for good reason. The health of our planet underpins the wellbeing, safety, and security for all. Healthy forests sustain our watersheds and the air we breathe. Ocean systems sustain our fisheries and stabilize our coasts. Keeping pollution out of nature keeps our water safe. And a stable climate provides our ability to grow food. The danger signs are all around us—but so are the solutions.

"With this new administration and a new Congress, WWF's work will continue. We remain devoted to conserving nature and reducing the most pressing threats to the diversity of life on Earth. Our priorities remain the same: to halt and reverse biodiversity loss, to address climate change, and to save life on our planet. The US government remains a powerful essential partner in all these efforts.

"We will continue WWF's 60-year legacy of building bridges and working with our partners—governments, cities, states, universities, companies, NGOs, and local communities—to create and deliver solutions that our children and our planet deserve. It's time to get busy and get on with our work."

Excerpted from the November 6, 2024 press release
<https://www.worldwildlife.org/press-releases/wwf-statement-on-us-election-results>

Hope, unity and action. Environmental progress WILL continue. As members of the Fox Valley Sierra Group, you're already aware of the importance of further safeguarding our environmental resources.

Please continue to join us as we both protect and enjoy the natural world around us!

Introducing a Wisconsin Organization Dedicated to Renewable Energy: RENEW Wisconsin

by Karen Van Offeren



Did you know that Wisconsin has a nonprofit organization based out of Madison that promotes renewable energy?

Meet RENEW Wisconsin!

RENEW's vision is clean renewable energy powering a strong, healthy and vibrant Wisconsin.

Their mission is to lead and accelerate the transformation to Wisconsin's renewable energy future through advocacy, education and collaboration.

Why support renewable energy? RENEW Wisconsin's website highlights:

- It's made in Wisconsin. We can use our own resources to produce our own energy.
- It's good for our economy. Transitioning to renewable energy will create thousands of good-paying local jobs and keep our energy dollars in Wisconsin.
- It saves money for our businesses and families. Renewable sources like wind and solar are the most cost-effective way to generate electricity, which saves money for everyone.
- It means protecting our water and lands. Clean energy helps to preserve Wisconsin's resources for future generations.

Established in 1991, RENEW Wisconsin has worked on policies and programs that expand solar power, wind power, renewable fuels, local hydropower, building electrification, energy storage and electric vehicles.

Discover more about all these initiatives on their website, <https://www.renewwisconsin.org/>. Each topic is discussed in detail and supported by numerous case studies and resource materials.

RENEW also provides information on several Wisconsin events that support in-person networking opportunities and further education on renewable energy. But the highlight of the year is RENEW Wisconsin's Renewable Energy Summit.

The 2025 summit returns to the Monona Terrace in Madison on Thursday, February 6th. This gathering of clean energy industry leaders, policymakers, students and advocates explores how clean energy is empowering Wisconsin communities.

For more details on the summit, please visit RENEW's website at <https://www.renewwisconsin.org/renewable-energy-summit/>.

Currently, RENEW Wisconsin is running their Rural Gratitude campaign. This is a special acknowledgement of the importance rural Wisconsin is playing in the transition to a cleaner, healthier future.

It's rural Wisconsin that hosts the large-scale wind and solar farms that generate clean, homegrown energy. And these

projects aren't just about generating power. They result in cleaner air for everyone across the state, less reliance on imported fuels and more local energy dollars staying in Wisconsin.

For details on how you can participate in RENEW's Rural Gratitude campaign, go to <https://www.renewwisconsin.org/thank-you-rural-wisconsin/>.

Interested in learning more about RENEW? The Fox Valley Sierra Group is hoping to have a RENEW Wisconsin representative speak at one of our upcoming monthly meetings. Please watch for updates on this exciting possibility!

Registration Open Until February 1 to Receive Landscape Pesticide Advance Notices

Homeowners and renters have until February 1, 2025 to sign up for 2025 growing season notices through the Wisconsin Department of Agriculture, Trade and Consumer Protection's (DATCP) landscape pesticide registry. Registrants receive advance notice from commercial lawn care companies that apply pesticides to lawns, trees, and shrubs on nearby property. You can submit addresses that you want to receive notification for that are located on your block or on adjacent blocks. There is no cost to register, and you must re-register every year.

To register, use either of the following methods:

- Online: visit <https://mydatcp.wi.gov> and click on "Registries/Lists" and select "Landscape Registry."
- Paper: Download, fill out, and mail a paper form available at <https://datcp.wi.gov/Pages/Programs/Services/LandPestReg.aspx>.

The landscape pesticide registry will start March 15, when pesticide applicators are required to notify individuals at least 12 hours in advance of when registered addresses are to be treated with pesticides ("pesticide" is a broad term that can include herbicides, fungicides, and insecticides). The registry applies only to commercial landscape applications. The registry does not apply to the following:

- Homeowners or landlords who do their own pesticide applications
- Pesticide applications to the inside or outside of buildings; including around a workplace, school, or day care center
- Pesticide use in agriculture

The landscape pesticide registry is a service offered by DATCP. For the 2024 growing season, over 4,500 addresses were registered to receive notice. To learn more about the registry, visit <https://datcp.wi.gov/Pages/Programs/Services/LandPestReg.aspx>.

Support your Fox Valley Sierra Group

Consider a Donation. Mail to, Fox Valley Group of the
Sierra Club, 567 Oak St., Neenah, WI 54956

Thanks to all who stepped up and donated to us.
Much appreciated!

Winter Outings

January 1 • Wednesday • 11:00am

New Years Day Hike or Snowshoe

Navarino Nature Center, W5646 Lindsten Rd, Shiocton, WI

Snowshoe OR Hike trails depending on snow conditions. If there is snow on the trails, we will use the 1.4 mile snowshoe trail. If there is no snow, then we can hike the loop trail which is about 4.4 miles. The trails are considered intermediate. Plan on spending 2 to 2.5 hours enjoying the outdoors. Hike or snowshoe, it will be a great way to start the new year! Dress appropriately, bring your snowshoes or warm hiking gear; dress in layers for this activity.

We will monitor the weather, in the event of extreme weather conditions this activity may be cancelled or rescheduled. Please register or let me know you plan to attend so I can update you on any changes.

Please register at sierraclub.org/wisconsin/fox-valley. Or with Peter Jobe at peterjobe1@gmail.com

January 11 • Saturday • 10:00am

Fallen Timbers Snowshoe/Cross Country Ski

Join us for snowshoeing or skiing at Fallen Timbers in Black Creek located at: W4531 Robin Road, Black Creek, Wisconsin. The trails are generally groomed for classic skiing with a separate snowshoe trail. The trails are level and generally easy for beginners.

We can take time to identify trees in winter and to learn about this interesting nature center and the area where it is located. Here is the website: fallentimbers.net Use the large parking lot nearest to Robin Road. The lower parking lot is reserved for staff.

Please register at sierraclub.org/wisconsin/fox-valley. Or Register with Penny Bernard Schaber at pennybernardschaber@athenet.net

January, February or March? Snowshoeing or Cross Country Skiing To be determined

Because snow conditions and temperatures fluctuate so much lately, it can be hard to plan. We are trying to setup a list of people who want to engage in winter activities. When the conditions are favorable we will contact all and try to get out there and enjoy the winter.

Signup with Monny at

fvsg.outings@gmail.com

Options could be Bubolz Nature Preserve, Reid Golf Course, High Cliff State Park, Point Beach State Forest, Hartman Creek State Park or Kettle Moraine State Forest. Or you can suggest a place to go to. Stay tuned.

March 29 • Saturday • 9:00am

Hike and explore LaSage Bottoms State Natural Area

LaSage Bottoms features a second-growth floodplain forest situated along the Lower Wolf River. The forest is dominated by silver maple with swamp white oak and green ash. LaSage Bottoms is owned by the DNR and was designated a State Natural Area in 2012. There are no restrooms or any

amenities available. We will spend 2 to 2.5 hours exploring this area. Dress appropriately, be aware that ticks may be out, and depending river level it may be soggy.

We will monitor the weather, in the event of extreme weather conditions this activity may be cancelled or rescheduled. Please register or let me know you plan to attend so I can update you on any changes.

Location: LaSage Bottoms State Natural Area (<https://dnr.wisconsin.gov/topic/statenaturalareas/LaSageBottoms>)

From the intersection of County S and Highway 78 north of Stephenville, go west on County S 1.2 miles to a DNR parking area north of the road. Park and walk north along the west bank of the river 0.5 miles into the natural area. Public access is available just east of the parking area on County S along the east bank of the Wolf River. We will gather in the parking area at 9:00 AM.

Register with Peter Jobe at pjobe1@gmail.com or on the Fox Valley Group Website.

April 5 • Saturday • 4:00pm

Terrell's Island Hike

5401-5541 Shubert Rd, Omro, WI

Water and migratory birds make an interesting combination. Join the Fox Valley Group of the Sierra Club for an early spring walk out on Terrell's Island in Omro on Saturday, April 5, 2025 @ 4 PM.

This is a flat, fairly easy walk. We will take the bridge trail first and depending on group interest, stamina, and time, decide together if we want to walk the second trail. This hike will be canceled for inclement weather.

Please register at sierraclub.org/wisconsin/fox-valley. Or Contact Marjie Fendt at marjiefendt@gmail.com to sign up.



Fonferek Glen County Park

For more information or additional outings,
check out our facebook page
or our website -
sierraclub.org/wisconsin/fox-valley
Click on the Meeting and Outings Link

PAINTING FUNDRAISER

We all experience cabin fever during Wisconsin's cold, snowy winter. Why not get out with friends and help your Fox Valley Sierra Group raise some badly needed funds on Wednesday, January 15th at 7:00pm at Pinot's Palette in Appleton. We've had a painting party the last couple of years and it was fun and successful. Arrive 15-20 minutes early for setup. We will be painting "Golden Gaze." This watercolor-esque rendering of a barn owl is both expressive and easy to customize.

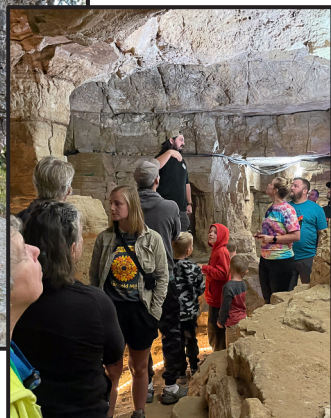
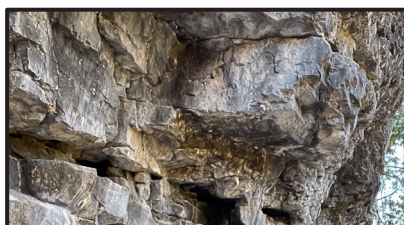
Cost per painter is \$39 which covers your canvas and supplies. Please pass the word to friends and family. Even if they aren't a Sierra member, they can join the fun and as part of Pinot's Paint it Forward program. Each chair filled is another \$10 donation to our group.

Sign up at <https://www.pinotpalette.com/appleton/event/805782>

Guests are welcome to bring snacks and appetizers into the studio to enjoy during class. Beer, wine, and an assortment of non-alcoholic beverages are available for purchase from the studio's full-service bar. BYOB not allowed..



Summer/Fall Fox Valley Outings



Cherney Maribel Caves
County Park



Wild Ones Center-
Guckenberger-Storm Preserve



An Example of How Outagamie County Benefited from Federal Funding

by Karen Van Offeren

Have you visited and enjoyed the beautiful grounds of Plamann Park? If you've attended one of Fox Valley Sierra Group's Annual Picnic meetings, you sure have!

Located north of Appleton at 1375 East Broadway Drive, Plamann is comprised of over 250 acres of scenic hills and trails and offers a large variety of activities.

But a few years ago, infrastructure problems developed. The original Outagamie County sewer system that serviced the park used holding tanks and the water system ran through wells.

One Fourth of July weekend, a holding tank overflowed resulting in a public health concern.

A joint project evolved between Appleton and Outagamie County. The resulting master plan benefited both the city and the county as an updated sewer line would run through both Plamann Park and the north and west sides of the city.

Initially, it was projected that the city would pay approximately \$914,000 and the county would pay an estimated \$1.6 million.

In the end, the complete project cost \$3 million dollars. Plamann Park was hooked directly with Appleton's sewer and water system.

However, rather than the City of Appleton and Outagamie County having to pay for the project, funds from the Biden-Harris Infrastructure and American Rescue Plan Acts covered the full cost.

The Plamann Park project is just one example of how Outagamie County has benefited from Infrastructure Plan funding.

If you'd like to know more:

- See the Democratic Party of Outagamie County Facebook page and search for the September 6th Infrastructure Minute video with Megan Eisenstein for a summary of the Plamann Park updates.
- See the Democratic Party of Outagamie County Facebook page and search for the October 18th Infrastructure Minute with Tom Nelson for a summary of how Outagamie County has benefited from the Biden-Harris Infrastructure Plan.

The Cost of Utility “Gaslighting” – An Update

by Karen Van Offeren

At the Fox Valley Sierra Group’s September 2024 meeting, Cassie Steiner, Senior Campaign Coordinator at Sierra Club-Wisconsin, talked about the cost of utility “gaslighting.”

“Gaslighting” in this instance refers to utilities across Wisconsin proposing a massive new methane gas infrastructure that is inconsistent with the state’s clean energy future and directly conflicts with Wisconsin’s ability to achieve carbon-neutral status by 2050.

In September, the Power Wisconsin Forward campaign was launched in opposition to this plan.



Power Wisconsin Forward is a movement toward an affordable, reliable and fossil-free future. It is supported by the Clean Economy Coalition of Wisconsin and its more than 50 partner organizations. You can visit Power Wisconsin Forward’s website at <https://powerwisconsinforward.com/>.

With the launch of Power Wisconsin Forward, Steiner explained, “Wisconsinites deserve affordable, reliable and fossil-free clean energy For too long, utility companies have gotten away with making poor investment decisions in fossil fuels, passing along the cost to customers, and profiting while customers suffer from air pollution and high electric bills. We look forward to continuing our work to ensure that our utility regulators hold true to their mission to ‘ensure safe, reliable, affordable, and environmentally responsible utility services’.”

This sentiment was echoed by Sam Dunaiski, Executive Director at RENEW Wisconsin. “Methane gas expansion would put Wisconsin further behind in our transition to a clean energy economy. Wind, solar and batteries are now economically competitive with fossil fuel energy and mitigate the impacts of climate change.”

Power Wisconsin Forward emphasizes three consequences of the proposed fossil fuel infrastructure. It will:

- Be harmful to our health. Burning methane gas will lead to increased air pollution, affecting the health of nearby communities. Research from the National Institutes of Health shows that people living in a zip code with a fuel-fired power plant experience 11% higher asthma hospitalization, 15% higher respiratory infection hospitalization, and 17% higher COPD hospitalization rates than those who live in a zip code without a power plant.
- Negatively impact the environment. Methane, the primary component of natural gas, is a potent greenhouse gas. With over 80 times the warming power of carbon dioxide over a 20-year period, gas burning and methane leaks from extraction, production and transportation significantly contribute to climate change.
- Lead to higher energy bills. The cost of building these new facilities will be passed on to ratepayers, who will bear the financial burden well beyond the expected lifespan of these plants. Additionally, households are already struggling to pay higher energy bills following two rate increases since 2022.

The Public Service Commission’s Decision

On November 7, 2024, the Public Service Commission of Wisconsin approved rate increases for both We Energies and Wisconsin Public Service.

At the PSC’s meeting, commission chair Summer Strand said that the commission sought to balance the need for safe, reliable and environmentally responsible utility service with affordability. “Rate shock and major changes in any direction do have significant impacts on all parties.”

In We Energies’ case, the commission approved a 8.79 percent overall electric rate increase over the next two years. This translates into an estimated \$7.62 increase in the 2025 monthly electric bill for an average residential We Energies customer, and a \$9.73 monthly increase in 2026.

In Wisconsin Public Service’s case, the commission approved a 7.33 percent overall electric rate increase over the next two years. This translates into an estimated \$7.11 increase in 2025 on an average residential customer’s monthly electric bill, followed by a \$5.04 monthly increase in 2026.

In response, Tom Content, executive director of the nonprofit Citizens Utility Board of Wisconsin, said the PSC took a “business as usual approach” at a time when many consumers are struggling with utility bills.

Steiner responded, “[The Sierra Club-Wisconsin is] disappointed in this decision, but we’re not going to stop fighting to put people first. We appreciate the Commission scrutinizing We Energies’ claims about the needs for this increase. We Energies’ poor investment in fossil fuels have put us in this place. Going forward, we hope to see the Commission continue to investigate We Energies’ claims about the needs of its customers. This will be more critical than ever as the Commission rules on decisions about new gas facilities that could result in stranded assets, hurting our communities even more.”

For more details and reactions to the PSC’s decision, visit: <https://www.wpr.org/news/regulators-approve-electric-rate-hikes-for-we-energies-wps> and <https://www.sierraclub.org/press-releases/2024/11/wisconsin-public-service-commission-approves-rate-increase-we-energies>

The food-wasting-est time of the year

Reducing food waste ranks in the top two things everyday people can do to pull back from the climate crisis.. Food waste research group ReFED estimates that 316 million pounds of grub will hit the bin during Thanksgiving festivities alone. That’s about a pound per person, and animal products are the biggest offender; 58% of what goes uneaten comes from turkey and milk alone. Become a methane busting hero during the holidays, make only what is needed and use your compost pile whenever possible.

One guide to climate solutions and sustainable living is an online news and advice service from ONE 5 C - <https://one5c.com>

A New Invasive Pest Has Been Found in Wisconsin

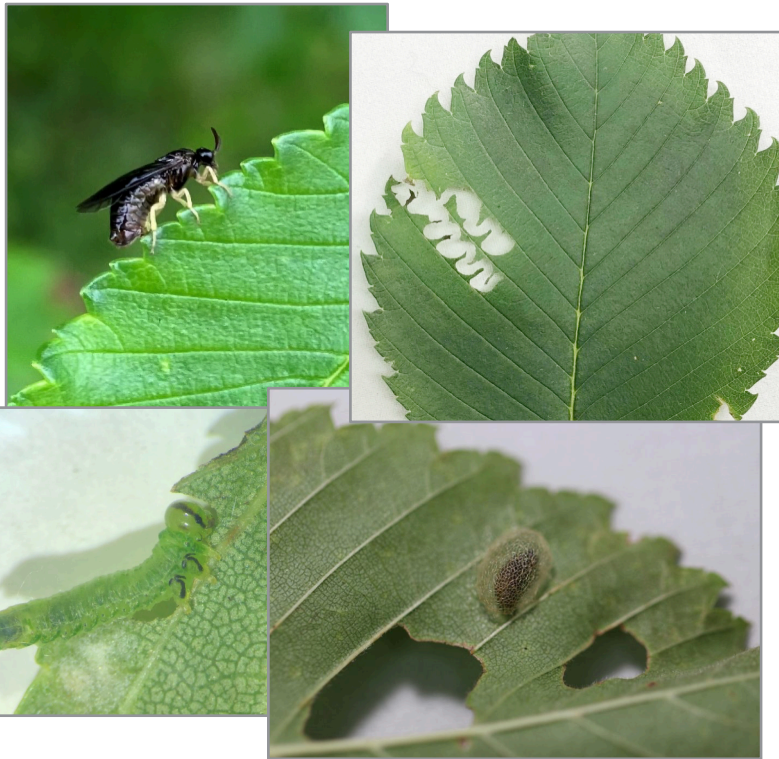
by Karen Van Offeren

Meet the elm zigzag sawfly.

As its name implies, this invasive pest attacks elm trees. It also refers to the distinctive “zigzag” feeding pattern of young larvae.

The elm zigzag sawfly was detected in Wisconsin in July 2024, and unfortunately, has already been found in several counties across the state.

It should be noted that in many cases, damage from this pest may be minor, but it does have the potential to cause significant defoliation of elm trees.



In spring, adults emerge and lay eggs. As pictured above, adults have a wasp-like appearance and are only about ¼ inch long. They are short-lived and lay from 7-49 eggs along the edges of elm leaves.

Within 4-8 days, the larvae emerge and begin to eat the leaves. Larvae are pale green with a dark line on their head and have dark T-shaped markings above their second and third pairs of thoracic legs.

The larvae feed for 10-18 days and gradually increase in size to just over 3/8-inch long.

Once they reach maturity, the larvae create small

cocoons as pictured above. In the cocoons, they reach the pupa stage. Cocoons are often found on plant material, but they can also be found beneath trees and on outdoor furniture, vehicles, etc.

The elm zigzag sawfly can produce multiple generations per year. At this time, it is not known how many generations will occur in Wisconsin each year.

Management

To date, few scientific studies have looked at the management of this invasive species. However, management approaches used for other sawfly species are recommended.

Management options for individual or small numbers of landscape trees include:

- Tolerance – Trees can tolerate some insect feeding without raising concern. In this case, doing nothing may be the appropriate response.
- Physical Control – Blast larvae off leaves with a stream of water from a garden hose or hand-pick/knock larvae into a container of soapy water.
- Chemical Control – Two options are recommended. 1) Organic and Reduced-Impact Sprays such as insecticidal soap and horticultural oils (e.g., neem oil). 2) Conventional Insecticide Sprays containing pyrethroid ingredients. Note: Both of these options are most appropriate for small trees that can be sprayed easily.
- Consult an Arborist – This is the best option when dealing with large trees.

For more information on the elm zigzag sawfly, visit the University of Wisconsin – Madison Extension’s website at <https://hort.extension.wisc.edu/articles/elm-zigzag-sawfly/>.

Several factors help the elm zigzag sawfly rapidly expand its numbers and spread into new areas:

- Populations consist entirely of females which can reproduce asexually (without mating)
- Multiple generations are generally produced each year
- Adults are capable of long-distance dispersal (28-56 miles per year)
- Cocoons can be formed on man-made items such as vehicles, facilitating insect spread.

Host Trees

The elm zigzag sawfly only attacks elm trees, but this includes a wide range of species: American, Chinese, English, Siberian, slippery and winged elms as well as elm hybrids. It can be found in both urban and forested areas.

Damage

While the young larvae create the meandering “zigzag” pattern pictured above, older larvae consume a greater amount of leaf material, creating large notches in the leaves. Each larvae eats a relatively small amount of leaf material, but groups can consume entire leaves, leaving only thicker mid- and lateral leaf veins.

Overall, damage from the elm zigzag sawfly can vary from minor/cosmetic to complete defoliation. If severe damage is repeated, it can weaken the trees and result in branch dieback. In the long-term, this could impact the health and value of both landscape and forest trees.

Life Cycle

The elm zigzag sawfly has four distinct life stages: egg, larvae, pupa and adult.

The pupae overwinter in leaf litter and other sheltered locations.

Fox Valley Sierra Group
Of the John Muir Chapter of the Sierra Club

567 Oak Street
Neenah, WI 54956

NON PROFIT
US POSTAGE
PAID
GREENVILLE, WI
PERMIT 19



It's Our Nature

Fox Valley Group of the of the Sierra Club - Wisconsin Chapter Vol. 24 Issue 3

sierraclub.org/wisconsin/fox-valley

Fox Valley Group of the Sierra Club Contacts

fvsierragroup@gmail.com

Chairperson, Conservation, Facebook

Penny Paiser-Wilson • (920) 720-9741
wilscats@new.rr.com

Treasurer

Diane Perschbacher • (920) 216-2159
DPerschbacher1@new.rr.com

Secretary, Membership, Hospitality

Jo Hjerstedt • (920) 479-4900
jhjerstedt@hotmail.com

Newsletter Editor, Outings, Communications

Monny Hjerstedt • (920) 558-0013
mhjerstedt17@gmail.com

Newsletter Writer

Karen Van Offeren • (920) 636-8696
vanofferenk@gmail.com

Fundraising

Donna Gasbarro • (920) 202-4333
gasbard14@gmail.com

Outings, Chapter Delegate

Peter Jobe • (920) 460-5915
pjobe1@gmail.com

Outings

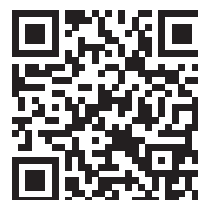
Marjie Fendt • (920) 921 8501
marjiefendt@gmail.com

Environmental Education.

Laura Menefee • (920) 824-5339
Menefee.laura@gmail.com

Stay up-to-date on the latest environmental news,
outings, programs and events by checking out our website at
sierraclub.org/wisconsin/fox-valley
or find us on **[facebook.com/foxvalleysierra](https://www.facebook.com/foxvalleysierra)**

It's Our Nature is published three times a year
Subscription included with Sierra Club membership dues



FVSG web site

To Join - https://bit.ly/FVG_membership