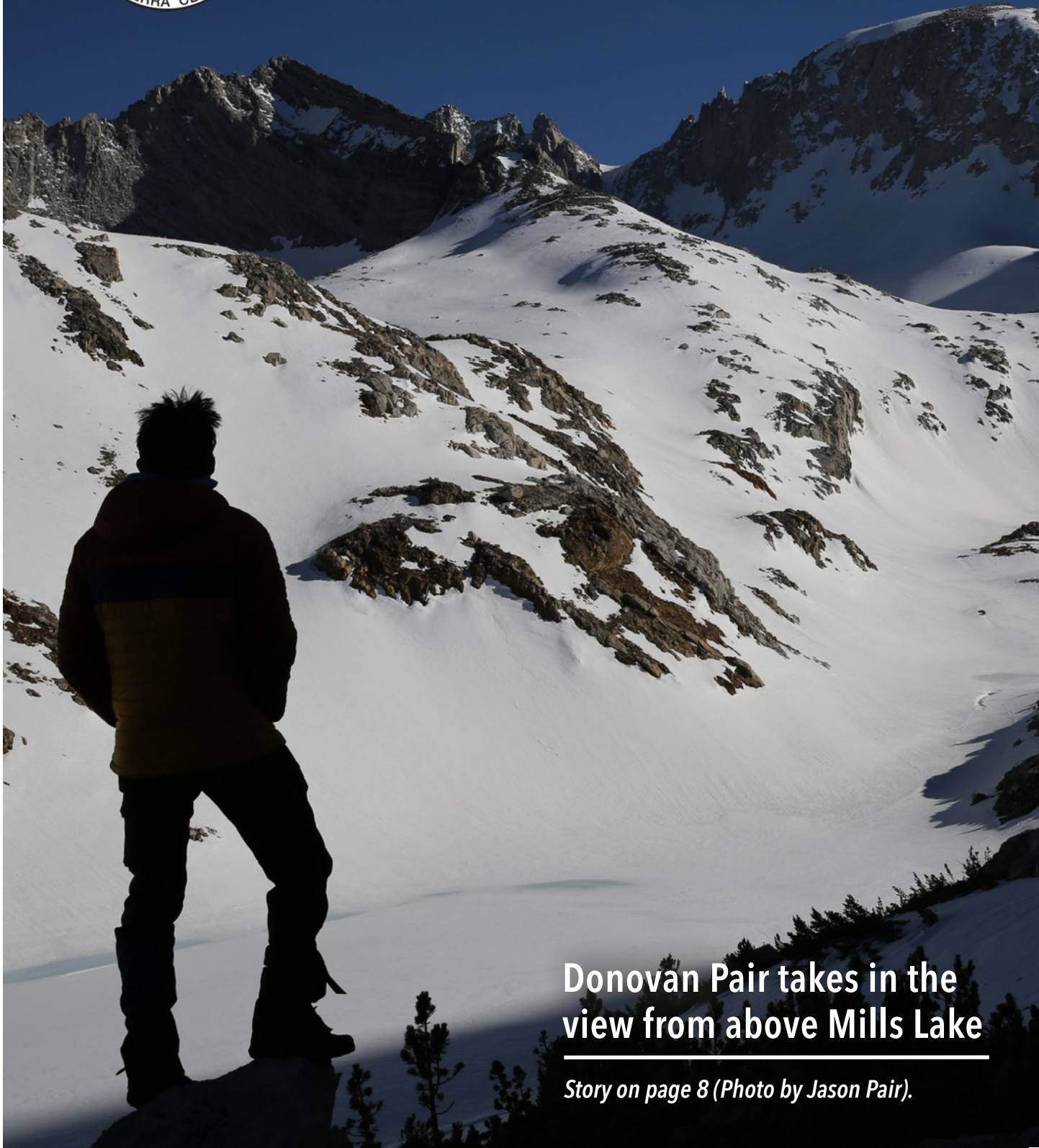




The Sierra Echo

Volume 68 ▲ Number 4 ▲ October-December 2024



**Donovan Pair takes in the
view from above Mills Lake**

Story on page 8 (Photo by Jason Pair).

Echoes from the Chair

Historically, the SPS has provided a means for climbers to find trips to join, either through sanctioned SPS trips with certified leaders or through private trips. Covid restrictions put a pause on the sanctioned trips, but we are pleased to see trips up and running again, thanks primarily to the efforts of Tina Bowman, Daryn Dodge, Kathy Rich, and Gary Schenk. Many of the former certified trip leaders have “retired.” Other members are in the pipeline working toward outings leadership positions, so there should be more trips available in the near future. All that said, there is still a dearth of sanctioned outings available for members and potential members to join, especially given the permit restrictions throughout the Sierra.

Gratefully, with social media these days, we have another outlet to be able to find partners for potential trips. The SPS Facebook group (1400 members) is going strong, and we will soon have an Instagram account as well. Through these outlets climbers can post trip reports in essentially real time (or once they have cell service). I personally find it invaluable to see what the conditions look like. And through Facebook you can ask questions of the posting climber directly on the post, or through a private message. I encourage everyone to utilize Facebook for this. The more “conversation,” the more information we have available for planning our own trips.



The one thing that we have not used the Facebook page for in any significant way is to help climbers connect for private trips. For instance, if you really wanted to climb peaks out of the Meysan Lakes area next season, I would encourage you to create a post that essentially says, “Anyone interested in partnering for a trip to climb X, Y and Z out of Meysan Lakes? I’m available most weekends in July. I am comfortable climbing up to Class 3.” The ideal time for this would be in the winter, at least six months before the summer permits become available. If you enjoy day hiking peaks on the list, but don’t want to go solo, go ahead and write a post that says something like, “Anyone interested in a day hike of Mt. Williamson from the George Creek trailhead next weekend?” Maybe you’ll find another climber willing to endure a hellish bushwhack and scree slog and, in doing so, find a climbing partner for life.

Jason Pair

In this issue:

Chair’s Column	2
Awards Nominations	3-4
Management Committee	3
Archivist	3
Treasurer’s Report	4
Member News	5
Around the Web	6
Thunderbolt, Clark & Leonard	7
Abbot	8-10
Finger, Reinstein	11-15
Outings	16-20
Wilderness Permits	18
Minutes	20-23
Bernard Passages	21
Mystery Peak Challenge	22-23

Call for Nominations

It’s that time of year when we’re looking for members to run for the SPS management committee. Are you interested? Know someone who might be willing to serve? Please contact Mary McMannes, chair of the nominating committee, to make suggestions. Her email is marymuir@earthlink.net.

New Treasurer Needed!

After years of excellent service, SPS treasurer Laura Newman needs to step away from the position. Are you willing to serve? If you have modest (or better) accounting skills, the SPS needs you! Please contact Laura or chair Jason Pair for more information.

Call for Award Nominations!

It's that time of year for members to nominate SPS leaders for the SPS Leadership Award. Established and first given in 1997, the award has been described thus: "Created by the SPS Membership to give recognition to those individuals who have shown outstanding leadership and service to the SPS over the years and who have fostered new leaders."

Please send your nomination and list of qualifications to the chair, Jason Pair, at jasonpair69@gmail.com. For more information, here's what the Policies and Procedures say about the award:

From time to time the Management Committee may choose to honor a leader for extraordinary service to the SPS. The award shall be given at the annual banquet with an article in the banquet **(Continued on page 4)**

Save the Date for the SPS Banquet!

The next SPS banquet is scheduled for Sunday, January 26, 2025. We will be entering our seventieth year and are looking forward to a big celebration.

A New SPS Archivist Is Needed

By Dan Richter, SPS Archivist

It must have been at least thirty years ago that I became your archivist. As SPS chair, secretary, and I can't remember what else, I became aware that we had boxes, files, newsletters, registers, and even a banner from the Mexican Alpine Club that needed indexing and a permanent home. One of our great leaders and my mentor, Bill T. Russell, wanted to have the Sierra Club SPS archives stay in Southern California. Bill made an appointment for us to meet with the folks from the UCLA Special Collections, and from that moment forward the archives had a home. Since then we have made several donations to UCLA. The only exceptions are registers and documents prior to 1940, which I send to the Bancroft Library at UC Berkeley. I also keep digital files and maintain an Excel file of SPS accomplishments and one of SPS members' awards.

I just turned eighty-five, and I'm slowing down. The time has come for me to step down as your archivist. It has been wonderful to learn about our history from our old timers and hold in my hands registers and letters from long ago. My greatest pleasure is knowing all of these materials are safe and preserved for following generations.

So we need someone to take on the role of our archivist. It's not much work but it is very rewarding. I plan to stick around for a while longer, so if you accept the job, I'll be available to help.



2024 Sierra Peaks Section Management Committee

Elected

Jason Pair	Chair jasonpair69@gmail.com
Jim Fleming	Vice-chair/banquet flemingjim174@gmail.com
Laura Newman	Treasurer sierrapeakstreasurer@gmail.com
Phil S. Bates	Secretary philsbates54@gmail.com
Dylan Kilby	Fifth officer/outings dylanrkilby@gmail.com

Appointed

Archives	Dan Richter dan@danrichter.com
Conservation Chair	Sharon Moore justslm@earthlink.net
Echo editors	Tina Bowman tina@bowmanchange.com , Beth Epstein
Echo mailer	Tina Bowman
Emblem Committee	Phil S. Bates, Kathy Rich, Daryn Dodge, Ron Bartell, Bob Pickering
IT Support	Greg Mason admin@sierrapeaks.org , Harry Lagenbacher admin2@sierrapeaks.org
Keeper of the List	Tina Bowman
Merchandise	Patty Kline patriciakline@aol.com
Mountain Records	Harry Langenbacher register@langenbacher.org
Outings	Gary Schenk gary@hbfun.org
Safety Chair	Doug Mantle sierradoug@icloud.com
Webmaster	Joe Wankum jbwankum@aol.com
Asst. Webmasters	Harry Lagenbacher register@summitregister.org , Tina Bowman tina@bowmanchange.com

Regional Representatives

San Diego, Joe White; Central California, Daryn Dodge; Northern California, Lisa Barboza

(Award Nominations, continued from page 3)

issue of *The Sierra Echo* to honor the leader. The award may be given posthumously. By submitting a letter to the Management Committee indicating why the leader should be so honored, members may nominate possible recipients. Management Committee members may also nominate recipients and should draw up a list of qualifications to be mentioned in an *Echo* article published each year in a mid-year issue along with a solicitation for nominees. Factors that may contribute to the selection of recipients should include leadership on numerous trips over a period of at least ten years, fostering new members and leaders, achievement of at least an “M” leadership rating, and setting the example of well-planned and safe trips. The Management Committee shall vote whether each nominee is to receive the award. More than one person may receive the award each year, but it need not be given every year.

Past recipients are
 Dave Dykeman and Bill T. Russell
 (posthumously), 1997
 Doug Mantle and Duane McRuer, 1998
 Dan Richter, 1999
 Larry Tidball, 2000
 Barbee Tidball, 2002
 Tina Bowman (Stough), 2015
 Neal Robbins, 2016
 Kathy Rich, 2017

The SPS now has a Lifetime Achievement Award, first given in 2016 to Barbara Lilley and Gordon MacLeod, then to Jerry Keating in 2017, Doug Mantle in 2018, and Tina Bowman in 2022. Please contact the chair if you would like to nominate someone. Here’s the description of the award from the Policies and Procedures:

From time to time the Management Committee may choose to honor a member for outstanding service to the SPS over many years. Such service may include leading copious outings, serving in various elected or appointed positions on the Management Committee, contributing to the *Echo*, and inspiring others by their mountaineering accomplishments. Members may nominate a possible recipient by writing to the Management Committee and indicating why the person should be so honored. The Management Committee shall vote whether each nominee is to receive the award. More than one person may receive the award each year, but the award need not be given every year.

Treasurer's Statement Year to Date (1/1/2024–8/31/2024)		
Money In		\$7865.36
Donations		1226.00
Interest		2.36
Membership		1375.00
Banquet Income		5117.00
Merchandise Income		145.00
Money Out		-\$5183.11
Banquet		-4330.69
Banquet (other)		-3330.69
Speaker Honorarium		-1000
Echo Expense		-652.15
Postage		-248.81
Printing		-403.34
Taxes		-6.56
Office Expenses		-128.65
PayPal Fees		-65.06
	Money In	\$7865.36
	Money Out	-\$5183.11
	Net Total:	\$2682.25
ASSETS		
Paypal		\$572.34
Checking		\$8261.60
Savings		\$3570.18
NET WORTH		\$12,404.12

Welcome New Members!

Isaac Simons

Isaac Simons is a long-time backcountry Rambler and newfound convert to the art of peakbagging. Tackling a snow climb of Mt. Abbot on just his third SPS peak, Isaac has been flailing in the deep end since and managing—just barely—to stay afloat. Recently he completed the Mt Pinchot-Mt Wynne traverse, which scared the bejeezus out of him. When not caked in trail dust, Isaac keeps up a respectable appearance with his wife and daughter in Los Angeles, where he spends his time as a writer of fiction, essays, and poetry.



Sunny Yi

Welcome new members Sunny Yi (seen above) and Rafaelle Abramovitz.

Congratulations!



Philip S. Bates earned his third Andy Smatko Explorer Emblem on Ellis Peak on July 1, 2024. Congrats, Phil!



around-the-web/

By Dave Sholle

Editors' note: Dave Sholle is our correspondent for this column, sharing web links that SPS members may find interesting. If you see something you would like to share with other members, please send it to Dave at dsholle@verizon.net.

Some of these links may be behind paywalls.

Sierra and California

[Alex Honnold smashes Yosemite solo speed record](#)

[Climber sentenced to life for Yosemite assaults](#) and [here](#)
[Tobin Sorenson](#)

[New hard free route on Keeler Needle](#)

[L.A. peak hike challenge](#) (seems like HPS already does this?)

[Fatal fall on Half Dome cables](#) and [here](#) and [here](#) and [here](#)
and [here](#)

[Record heat waves cause hiking rescues to increase](#)

Andes

[Melting glacier reveals body of long lost climber](#) and [here](#)
and [here](#) and [here](#) and [here](#)

[Original story of the tragedy from 2002 involving Sierra Club climber Matthew Richardson](#)

High Asian Peaks

[Lhakpa Serpa Netflix documentary](#)

[Record breaking Everest Sherpa guide Kami Rita hits out at piles of garbage left on mountain](#)

[Instagram star does backflip on top of Mount Everest](#)

[California climbers summit Everest with pioneering techniques](#)

[Removing bodies from Mount Everest](#)

[Nims Purja controversies](#) and [here](#) and [here](#) and [here](#)

[Tragedies on Mount Everest](#) and [here](#)

[Footage of Everest cornice accident](#)

[Fewer climbers died on Mount Everest this year](#)

[The man who took on Reinhold Messner's mountaineering record](#)

[Sherpas fear their homes will be washed away](#)

From Jeff Temple via Tina Bowman—[Annapurna Film Purnima Shrestha's Mount Everest record](#)

[Death on Shishapangma](#)

[Forgotten female mountaineer who held Himalayan record](#)

Alps

[Olympic torch goes for a climb in Chamonix](#)

[Top young alpinist dies free soloing](#)

[Circumnavigating the Mer de la Glace](#)

Alaska

[Denali climbed totally with human power, seven summits to follow](#)

[Climber dies on Denali](#)

[Two climbers stranded on Denali](#) and [here](#)

Other

[What heatstroke feels like](#)

[Why Mount Rainier troubles scientists](#)

[Climbing after your spouse/climbing partner dies](#)

[Suffer bivvy](#)

[SAR in Washington](#)

[Four-year old climbed New Hampshire's 48 4,000 foot peaks](#)

[Make yourself searchable when disaster strikes on a hike](#)

[Turning trash into treasure in the Atacama desert—a Patagonia film](#)

[Red snow at height](#)

[Women climbers reaching new heights but face old obstacles](#)

[How backpacking meals are made](#)

[A mechanical assist as we age](#)

[Cyanobacteria in backcountry water](#)

[Tent stake holding power](#)

[Should you use AI on the trail?](#)

From Bill Oliver re “SPS Honorary Members Continued: Eichorn and Dawson” by Doug Mantle in our last issue:

“It was great to see that Doug has continued his honorary memberships articles, this time with Glen and Jules.

Let me mention that the article is mistaken in stating that Dick Leonard was part of the team that made the first ascent of Thunderbolt Peak. He was not present, nor was he part of Underhill's preceding “Palisades Climbing School.” Thus, his absence from their group photo. Jules and Dick first connected in March 1932 (not 1931) when the latter started the Cragmont Climbing Club.”

Doug replied, “Apparently, it was Lewis Clark, Dickie Leonard did everything else. Mea Culpa.”



Left: Palisades Climbing School, August 1931. L-R, standing: Francis Farquhar, Bestor Robinson, Glen Dawson, Neill Wilson, and Lewis Clark. Kneeling: Robert Underhill, Norman Clyde, Jules Elchorn, and Elmer Collett. Behind: Jules Eichorn and Robert Underhill on summit of Starlight, North Palisade, during The Palisades Climbing School (Photo by Lewis Clark; both photos Courtesy Glen Dawson Collection, Sierra Club Angeles Chapter Archives).

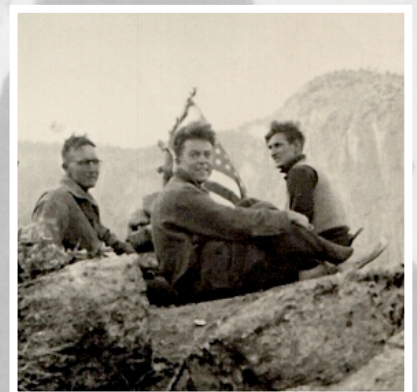
More on Thunderbolt *By Doug Mantle*

Must you climb the summit block to count the peak? Some list finishers have thought not. Others insist, whether via shoulder stands, lassos, or slings. For the first ascent of Thunderbolt Peak topping the block was thought necessary and was accomplished via “shimmying.”

In the last *Echo*, we recounted how only two climbers scurried up the block which has been rated at 5.9, while the others, including Norman Clyde, and NOT Dick Leonard, as I wrote, but Lewis F. Clark, retreated. But there is a different version of the events.

Lewis F Clark was a long-time Sierra Club officer. He, along with Dick Leonard, founded the Cragmont Climbing Club, and the two ushered it into the Sierra Club as the rock climbing section (RCS). Clark was interviewed as part of an oral history project by the Club in the 1970s. Of the Thunderbolt climb, he recounted, “to feel we were really on top, we had to shimmy up [the block]. One by one we got up there and signed our names on a scrap of paper.”

All this done amidst the impending lightning strike for which the peak is named. Kudos, gentlemen!



Above: L to R, Bestor Robinson, Dick Leonard, and Jules Eichorn on their first ascent of Highest Cathedral Spire August 25, 1934 (Courtesy of bigwallgear.com).

Abbot—An Early Season Ascent

May 25-27, 2024

By Jason Pair



This was a private trip with my son Donovan and Isaac Simons. It was planned as the first trip of the season for us because my son had just finished his first year of college. The plan was to backpack into the Mills Lake area on day one, relax in the afternoon, and climb Abbot on day two. We would then climb Mills on day three before packing out. As it turned out, this was one peak more ambitious than we planned.

We met in Bishop for some Mountain Rambler Brewery pre-trip festivities before driving up to Rock Creek Pack Station, where we truck camped for the night. We weren't in a big hurry the next morning, knowing we had a full day to travel less than five miles to base camp.

Besides the requisite backpacking and mountaineering equipment, we brought snowshoes in anticipation of post-holing above Ruby Lake—turned out these were dead weight as the snow stayed firm enough throughout the weekend. We also brought along a 30m length of 6mm rope, alpine harnesses and some slings, ATCs, and carabiners. We used all of these.

The first day to camp was uneventful under blue skies (as the weather would remain for three days) with many stops to marvel at the Little Lakes Valley peaks. We encountered a day hiker below Ruby Lake but otherwise did not see another person until our hike out. There was a single set of tracks in the snow heading up from

Ruby Lake, which we confirmed were a skier's the next day, when we spotted them ending in the upper reaches of the NE couloir.

Once we got to an area above Mills Lake (frozen like Ruby Lake), we carved out a few tent sites (let the college kid shovel out a flat area in the snow). We had plenty of time to do some self-arrest and short rope practice on a nearby slope, along with snow anchoring techniques. We then settled into an epic battle of Texas Hold'em before melting snow and making dinner. This was all in glorious view of the cirque of Abbot and Mills.

After a cold, clear night, with a fine moon rise, we set out at 5:30 a.m. We began ascending the couloir at 7 a.m. The snow in the couloir was easy enough to kick steps and felt secure enough not to rope up. Once we reached the rocks, we had to move slowly and one at a time with the profusion of loose rocks. As we wound our way up to the ridge, we found ourselves having to remove and replace our crampons multiple times. After trying to use a dry ascent on some steep class 3 slabs, we ran into a headwall that required a traverse across a snow-filled ledge. This ran above a steep snow slope that, from our perspective, had no end in sight. Time for the rope—we used a nice horn of granite to terrain belay across this section.

The mix of snow and rock between the couloir and the Airy Traverse made for a SLOW ascent. Before the trip we had talked about the "crux" of the climb being this traverse. After

*Left: Start of the summit day
(Photo by Jason Pair).*

the objective hazards of what we had dealt with getting to it, the traverse was not intimidating at all. The remainder of the ridge was pure class 2 alpine granite fun with some easy route finding and solid exposed moves.

The final snow slopes to the summit were easy, and we were quickly basking in summit bliss. I love early season summit views with so much snow in the backcountry. The downclimb proved to be slower than the ascent with four sections rappelled due to the steep snow. We used natural features for the rappels, leaving no



soft or hard goods behind. Before we reached the couloir, the sun dipped behind the ridge and the temps dipped quickly. We were relieved to reach the couloir and then the safety of the plateau below.

By the time we made it back to camp, it had been a fourteen-hour day, and we were exhausted. We all agreed we needed a long sleep and lazy next day. Without an ounce of disappointment at not

Right: Jason Pair and Donovan Pair approaching Mt. Abbot (Photo by Isaac Simons). Left: Donovan Pair on the snowy ascent (Photo by Jason Pair).



Left: Jason Pair belays Donovan Pair on the first traverse. Middle: Donovan Pair on the Airy Ridge Traverse (Photos by Isaac Simons). Bottom: Left to right on the summit, Isaac Simons, Jason Pair, Donovan Pair (Photo by Jason Pair).

committing to Mt. Mills, I settled into a deep sleep. The next day was truly a lazy morning; I am so used to alpine starts that a morning of allowing the morning sun and some hot coffee to defrost my soul felt downright decadent. We'll be back to grab Mt. Mills!





Ascents of Finger Peak (Northwest Ridge, class 3) and Mount Reinstein (South Slope, class 2), June 10-13, 2024

[Photo Album](#)

Timeline:

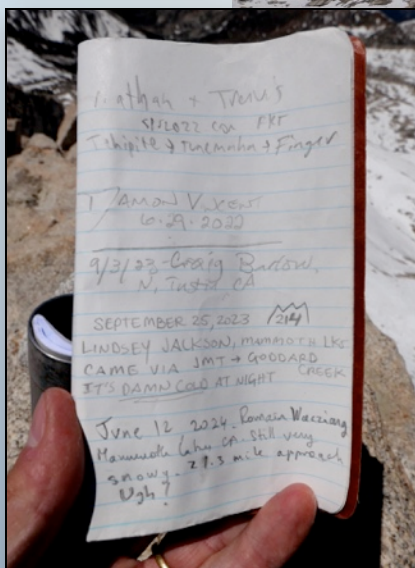
Those were four solitary days in a remote part of the Sierra Nevada, one that I had not before visited. On June

9, I left LA at 2:00 and drove to Prather, where I picked up my wilderness permit from the after-hours drop box. After a dinner of fajitas at Velasco's (a Google



Top: NW Ridge of Finger Peak. Bottom: Blackcap Basin and Mt. Reinstein from atop the chute on Finger (Photos by Romain Wacziarg).

Top: Mantle Pass.
 Middle: Finger
 Peak register
 (Romain's entry
 date is wrong).
 Bottom: Portal
 Lake (Photos by
 Romain
 Wacziarg).



recommendation which did not disappoint), I drove the remaining distance to Courtright Reservoir, parking at the Maxson trailhead around 8:40. It was a comfortable night in the back of my 4Runner.

June 10, 2024: I woke up early, had breakfast, and set out on the Blackcap Basin Trail at 6:50 at a steady 3 mph pace. This I could only sustain for a few miles, as trail conditions progressively worsened. The main issue was snowmelt turning the trail into a stream and requiring some detours to the sides to avoid wet feet. I took occasional breaks, one longer lunch break along the trail, and the miles went by slowly. Multiple stream log crossings, bug

infested hikes through wet bogs, and three major shoes-off river crossings, brought me to the southern side of the North Fork of the Kings River and the uphill portion of the hike. About 4 miles later, I reached Portal Lake but was on





the wrong side of the outlet stream and had to hike down a few hundred feet to find a log crossing to the correct side. Twelve hours had elapsed before I was able to set up camp at Portal Lake around 6:50. (A 12:01 hour day, 10:27 hours moving, 21.35 miles, 4,071 feet of elevation gain)

June 11, 2024: My plan for this day was to climb Finger Peak by its Northwest Ridge, and I also had a vague notion of heading to Tunemah Peak on the same day. This would make for about a 14-mile cross-country day, not an easy task. Indeed, it did not prove possible, due to the amount of snow on the ground, to my state of fatigue, or to my general inadequacies. At any rate, I left camp at 6:43, contoured Portal Lake's north shore and on to steep snow toward Midway Lake. Halfway up the slope, I put on my microspikes, and broke a rubber strap. This I thought might mean the end of the trip. But I carried on, and at a stop on the shores of Midway Lake I was able to fix the item with some tent guy line. This held up for the remainder of the trip. On I went toward Cathedral Lake and up moderately-angled snow to the prominent notch directly south of the lake (8:45). At the notch, I climbed some steep 3rd class rock to the broad Northwest Ridge of Finger Peak. Several bumps on the ridge went at class 2, until the final portion which became steeper. The 3rd class climbing in this final portion, including the final steep staircase to the tiny summit



Top: Mt. Reinstein, White Divide. Middle: A selfie before ascending Reinstein's south slope. Bottom: Finger Peak from the approach to Reinstein (Photos by Romain Wacziarg).



block, was very enjoyable—in fact I would rate this as an excellent climb, something I had not been led to expect from the descriptions I had read beforehand. I was on the summit at 10:37 and greatly enjoyed the views of Blue Canyon and of the Mount Goddard area, lingering there for a while. Looking across toward Tunemah Peak, I found the amount of terrain I would have to traverse to reach that peak daunting. I decided instead to descend Finger Peak's class 2 Southeast Slope, head to Mantle Pass, through Crown Basin, and back to camp at Portal Lake for a complete traverse of Finger Peak. This was a very enjoyable hike. But the vagaries of the terrain, the plentiful snow coverage, and the frequent photo breaks delayed my return, and I was back in camp only at 4:34. I enjoyed the four additional hours of daylight with some rest in camp. (A 9:49 hour day, 8:32 hours moving, 7.50 miles, 3,080 feet of elevation gain)

June 12, 2024: I expected this day to be quite a bit easier. The plan called for an ascent of the South Slope of Mount Reinstein, some three miles north of camp. The excursion would take me through much of Blackcap Basin, which I was looking forward to. I left camp at 6:32 and hiked up to Pearl Lake, still mostly frozen. I then angled east toward Regiment Lake and then north from there toward the broad South Slope of Mount Reinstein. One option in the center went up some snow. Left of me was a talus field, and right was some sand and scree. I chose the snow at first, taking me about a quarter of the way up the slope. I then opted for a mix of talus and sand, which was not too bad (a bit steeper and it would have been hell). Once again I had expected worse, and was pleasantly surprised with a solid class 2 staircase at the top, leading to the summit (10:21). The views from there were nothing short of breathtaking of the SW aspect of



Mount Goddard, the Ionian Basin, Martha Lake, Goddard Canyon, and the Goddard Creek drainage. Far in the distance one could see Mount Humphreys, Thunderbolt Peak, and North Palisade among a myriad other high peaks of the Sierra. While putting a peak this far remote from any trailhead on the Sierra Peaks List had seemed like a cruel joke, now I understood. The Sierra Peaks Section lists Mount Reinstein as the remotest peak on the SPS list, but it truly

Top: Mt. Reinstein summit view: Mount Goddard, Martha Lake, Goddard Canyon. Mount McGee, Emerald Peak. Bottom: White Divide and Finger Peak from the summit of Reinstein (Photos by Romain Wacziarg).

belongs there. I left the summit at 10:57, retraced my way down the slope, but angled west toward Ambition Lake to take a slightly different way back to camp. It was pretty continuous snow along Ambition Lake and Bighorn Lake, till I rejoined Division Lake, Pearl Lake, and finally camp at 2:12.

There was still a lot of day left, so I decided to get a head start on the return. I took a nap in the shade of a pine tree, had lunch, packed up camp, and set out at 4:02. I made my way about four miles to a spot just before the crossing of the North Fork of the Kings River, through mosquito infested bogs, a mix of snow and mud, till reaching a much drier spot with an inviting fire ring and a flat spot for the tent, begging me to stop (6:03). I was happy to oblige. I made a fire, which dissipated the few bugs that lingered around, had dinner, and went to bed at sundown. It was a relatively comfortable night at only 9,200 feet. (A 9:39 hour day, 8:27 hours moving, 10.71 miles, 2,218 feet of elevation gain)

June 13, 2024: There were about 17 miles left, and it turned into a sort of death march as I tried to reach the trailhead early enough to return home the same day. I left camp at 6:39, forded the Kings River, stopped at the Meadow Brook Cabin for a snack, forded Fleming Creek, then Post Corral Creek, stopped for a nice lunch near a stream, and reached the car at 3:00. Mine was still the only car in the entire trailhead parking lot. I

had not seen another human being in over 90 hours. I drove to the shores of Courtright Reservoir, which was teeming with campers, and took a bath in its waters. Feeling refreshed, I started the long drive home, stopping briefly at the McKinley Grove of Giant Sequoias for a short walk through the big trees, and on to Prather for dinner, reaching home in LA at 11:00. (An 8:21 hour day, 7:20 hours moving, 16.94 miles, 1,431 feet of elevation gain)

Trip totals: 39:50 hours elapsed, 34:46 hours moving, 56.5 miles, 10,800 feet of elevation gain

Top: Along the flooded Blackcap Basin Trail. Bottom: Cabins at Big Maxson Meadow (Photos by Romain Wacziarg).



Dare to Lead!

Virtual Leadership Training Fall Seminar Sunday, October 27

Interested in starting on your path to become an Angeles Chapter outings leader? The first step is to take the Leadership Training Seminar offered virtually. The class costs \$15. See more information about the seminar, learn the dates once they're set, and find a link to the application here: <https://www.sierraclub.org/angeles/leadership-seminar>.



We've chosen the photo above taken by Mat Kelliher, showing climbers ascending Mt. Emerson on an SPS trip, to represent the outings section. Do you have a photo you would like to see here? If so, please send your submission as an email attachment to tina@bowmanchange.com or via USPS to Tina Bowman.

SPS outings can always be viewed online on the electronic Angeles Chapter Schedule of Activities:

<http://angeles.sierraclub.org/activities>
<https://sierraclub.org/angeles/sierra-peaks/outings-schedule>

recommended. These outings require substantial pre-outing preparation work, including completion of both a comprehensive written exam and a route planning assignment that will be mailed to you prior to the checkoff. See Chapter 6 of the *Leader's Reference Book* for more information.

Sep 27-29 | Fri-Sun

SPS

M: Mt. Powell (13,364'), Picture Pk (13,120'): Join us for two Sierra peak climbs above the beautiful Echo Lk basin. This is a Sierra Club backcountry outing that starts and ends at the Sabrina Lk trailhead. The outing is dependent on wilderness permit availability. We will know two weeks in advance of the trip if we have obtained a permit. Fri: backpack to rock-bound Echo Lk and camp near the lake's outlet (7 mi, 2700' gain). Sat: climb Mt. Powell in the morning, take a lunch break back at camp, then climb Picture Pk in the afternoon. Both peaks are rated class 3 by their easiest route (total 5 mi, 3500' gain). Mt. Powell and Picture Pk are not on the SPS list. However, Mt. Powell is on the Vagmarken Sierra Crest List. Sunday: we hike out. Medical Form required. Send email and cell phone, recent conditioning and resume of recent class 3 climbs. Ldr: Daryn Dodge. Co-ldrs: Kathy Rich, Tina Bowman.

Sep 21 | Sat

LTC, WTC, HPS, DPS, SPS

I: Navigation: Mt Pinos Navigation Noodle: Navigation noodle at Mission Creek Preserve to satisfy the basic (I/M) or advanced (E) level navigation requirements. Practice skills or checkoff. Send email with contact info (mailing address, phone numbers), navigation experience/training, any WTC, leader rating, rideshare to Leader: Robert Myers. Assistant: Ann Shields. (This is a backcountry outing; a medical form will be required.) Note: Early (at least two weeks prior to the event) sign-up for all navigation checkoffs and practices is

Leaders in this issue's schedule:

Tina Bowman tina@bowmanchange.com
 Daryn Dodge daryn.dodge@oehha.ca.gov
 Robert Myers rmmyers@ix.netcom.com
 Ann Pedreschi Shields apedreschi@sbcglobal.net
 Kathy Rich karich@usc.edu
 Gary Schenk gary@hbfun.org

Oct 27 | Sun

LTC

LTC Seminar Fall 2024: The Angeles Chapter Leadership Training Committee is offering another "hybrid" seminar, all virtual. Learn about essential topics from Sierra Club Values, Conservation and Safety, to best leadership practices, group management, trip planning, steps to leadership, and a First Aid overview, followed by our legendary scenarios. Because there's an online e-learning component and homework and a pre-exam, you'll

Please note: Currently the Sierra Club requires all participants on an outing more than an hour from help to complete a medical form, and leaders for such outings must complete a safety management plan. Both are fairly simple forms, which are available at the LTC web site here: <https://www.sierraclub.org/angeles/leadership-outings/forms-resources>.

OUTINGS

From the Outings Chair

By Gary Schenk

Leaders need to be aware of some new changes in outings. For the time being, it's recommended by the national office that no unaccompanied minors be allowed on trips. We will be getting more clarification on this soon.

More importantly, trips entering a national park now require, in addition to the standard waiver, a new waiver for national parks. The waiver can be found here: <https://community.sierraclub.org/page/national-park-service-visitor-acknowledgement-risks-2024-2025> and also here on the LTC website: <https://www.sierraclub.org/angeles/leadership-outings/forms-resources>.

Many thanks to leaders of trips into the Range of Light.

want to register enough in advance to guarantee your spot as space is limited. Later applications may be accepted on a space-available basis but are not guaranteed, so register early. Open to leaders refreshing their rating, but priority is given to leader candidates. Come learn all about the best leadership practices of our outings program. **Note:** Our *Leader's Reference Book (LRB)* was revised in 2022 just as National Sierra Club launched its online *Outings Leadership Training ("OLT")* for "local outings" (Chapters, Groups, Sections) leaders. The online OLT presents the latest training on Sierra Club values, commitments, equity, and more. Angeles incorporates these trainings into our own. **This Seminar is also a Train the Trainers opportunity and will require a meeting for trainers ahead of the seminar. Candidates will need to be a Sierra Club member in order to do this seminar and**

SPS safety chair Doug Mantle notes that the INYOSAR (Inyo Search and Rescue) site on Instagram is a useful tool for determining the latest safety risks in the Sierra with related stories.

Note: Please check the bottom of the SPS home page (<https://www.sierraclub.org/angeles/sierra-peaks>) or Leadership Training Committee home page (<https://www.sierraclub.org/angeles/leadership-outings>) for more training and other outings.

access Campfire Learning. For added information, see <https://act.sierraclub.org/events/details?formcampaignid=7013q0000029psbAAA&mapLinkHref=>

Nov 2-3 | Sat-Sun

LTC

Wilderness First Aid Course: The course runs from 7:30 am to 5:30 pm on Saturday and Sunday in Fullerton plus four hours of video lectures (on-demand) during the following week. Review of course notes and completion of pretest (est. 4 to 8 hours) is required prior to course. This course meets the 24-hour WFA requirement for I/M/E leader ratings. Fee includes instruction, skills materials, pdf of course notes and two laminated cards with response protocols. COVID precautions include optional masks for skills activities. Proof of CPR training within previous 4 years (8 years with on-line refresher) and signed release of liability and are required to enroll. Fee \$180 (full refund until 10/4/24). This WFA course is only offered twice a year by a dedicated, highly experienced team. For sign-up, see instructions and application at <http://wildernessfirstaidcourse.org> **Cost:** \$180

Nov 23-24 | Sat-Sun

LTC, WTC, HPS, DPS, SPS

I: Navigation: Mission Creek Preserve Navigation

Noodle: Navigation noodle at Mission Creek Preserve to satisfy the basic (I/M) level navigation requirements. Saturday for practice, skills refresher, altimeter, homework, campfire. Sunday checkoff or additional practice. Medical form required from all participants. Send email with contact info (mailing address, phone numbers), navigation experience/training, any WTC, leader rating, rideshare to Leader: Robert Myers. Assistant: Ann Shields. Note: Early (at least two weeks prior to the event) sign-up for all navigation checkoffs and practices is recommended. These outings require substantial pre-outing preparation work, including completion of both a comprehensive written exam and a route planning assignment that will be mailed to you prior to the checkoff. See Chapter 6 of the *Leader's Reference Book* for more information.

OUTINGS

Thinking of leading a trip or looking for info on a trip you've already decided on?

SPS Safety Chair Doug Mantle invites you to e-chat about it, get his input, flesh out your ideas—sierradoug@icloud.com.

Wilderness Permit Info

Most wilderness permit reservations are now made through <http://recreation.gov>. For day use permits for Desolation Wilderness, get a free permit from a local Forest Service office any time of year or at the trailhead in summer. For overnight permits year round, go to recreation.gov.

INYO NATIONAL FOREST

Web site: www.fs.usda.gov/main/inyo/home

All wilderness permits are reserved through <http://recreation.gov>. Follow instructions regarding permit pick up. This includes the “walk-up” permits (and you now have to pay for them!).

Eastern Sierra InterAgency Visitor Center, Lone Pine, CA
(760) 876-6200

White Mountain Ranger Station
Bishop, CA 93514
(760) 873-2500

Mammoth Lakes Visitor Center
Mammoth Lakes, CA 93546
(760) 924-5500

Mono Basin Scenic Area Visitor Center, Lee Vining, CA 93541
(760) 647-304

KERN PLATEAU

Web site: www.fs.usda.gov/sequoia

Wilderness permits are required only for overnight stays in the Golden

Trout Wilderness. For trips departing from a Sequoia National Forest trailhead, permits are free via email using the application you'll find at https://www.fs.usda.gov/detail/sequoia/passes-permits/recreation/?cid=fsbdev3_059517. For entry into the Golden Trout Wilderness from Inyo NF or Sequoia/Kings Canyon NPS, make your reservation through <http://recreation.gov>.

Cannell Meadow Ranger District
105 Whitney Road
P.O. Box 9
Kernville, CA 93238
Phone: 760/376-3781
Fax: 760/376-3795

Tule River Ranger District
32588 Highway 190
Springville, CA 93265
Phone: (559) 539-2607

YOSEMITE NATIONAL PARK

Web site: www.nps.gov/yose

Yosemite wilderness permit reservations become available by lottery twenty-four weeks in advance through <http://recreation.gov>. Any remaining reservations become available on a first-come, first-served basis after the lottery process is complete for that week's reservations up until seven days in advance. May-October walk-up unreserved permits (40% of the trailhead quota) are available on a first-come, first-served basis beginning at 11:00 a.m. on the day before the intended date at permit issuing stations. Reservations aren't needed from November through April, but permits are required. Trailhead quotas are in effect in winter. See <https://www.nps.gov/yose/planyourvisit/wildpermits.htm>.

If your starting trailhead is outside Yosemite NP, obtain your permit from the land agency that manages that trailhead.

SEQUOIA AND KINGS CANYON NP

47050 Generals Highway
Three Rivers, CA. 93271-9599
Phone (559) 565-3766 for permit & trail info. Fax (559) 565-4239

For general information go to www.nps.gov/seki. For wilderness permits go to www.nps.gov/seki/planyourvisit/wilderness_permits.htm.

Up to six months in advance of your trip, permits may be reserved at <http://recreation.gov>. Permits may be self-issued outside the quota period, from roughly mid-September to mid-May.

SIERRA NATIONAL FOREST (WESTSIDE) ENTRY

Web site: <https://www.fs.usda.gov/sierra>

Ansel Adams Wilderness—North
Bass Lake Ranger District
57003 Road 225
North Fork, CA 93643
Phone: (559) 887-2218

Ansel Adams Wilderness—South
John Muir, Kaiser, and Dinkey Lakes
Wildernesses
Pineridge/Kings River Ranger District
29688 Auberry Road
Prather, CA 93651
Phone: (559) 855-5355

See https://www.fs.usda.gov/detail/sierra/passes-permits/?cid=fsbdev7_018115 for wilderness permit information; reservations are made at <http://recreation.gov>.

OUTINGS

FREE

First Year's Membership or *Echo* Subscription

New subscribers and members can receive their first year's subscription for free! Download the Membership Application Form at <http://sierraclub.org/angeles/sierra-peaks/new-members#mr>. Please contact the chair if you have any questions.



Wear 'em! Give 'em!
SPS TEES

Front: NORTH PAL
Back: FULL SPS LIST
By geographic area with Mountaineer & Emblem peaks highlighted

S, M, L in Ash & Sand
\$20 includes shipping
Send your order to:

Patty Kline, 7409 Hermosa Ave
Yucca Valley, CA 92284
Make check payable to SPS
CST 2087766-40

Yosemite Reservations 2024

Yosemite Park Entry 2024 (see <https://www.nps.gov/yose/planyourvisit/reservations.htm> for complete information)

Mid-April through October 2024 Reservation Requirement

A reservation will be required to drive into or through Yosemite National Park on some days from April 13 through October 27, 2024, for those driving into the park between 5 am and 4 pm as follows:

- **April 13 through June 30:** A reservation is required from 5 am to 4 pm on Saturdays, Sundays, and on holidays (May 27 and June 19).
- **July 1 through August 16:** A reservation is required from 5 am to 4 pm every day.
- **August 17 through October 27:** A reservation is required from 5 am to 4 pm on Saturdays, Sundays, and holidays (September 2 and October 14).

In all instances, you still pay the \$35/car entrance fee upon arrival (credit card only) unless you have an annual or lifetime pass. Most reservations for all dates from April 13 through October 27, 2024, will be available on [Recreation.gov](https://www.recreation.gov) on **January 5, 2024, at 8 am Pacific time**. Additional reservations will be available **seven days before the arrival date** (e.g., make a reservation for an arrival date of October 27 on October 20) at 8 am Pacific time. **Reservations are taken almost immediately. Be sure to have a [Recreation.gov](https://www.recreation.gov) account and be logged in and ready to get a reservation promptly at 8 am Pacific time.** The non-refundable reservation fee is \$2 (this does not include the \$35-per-car park entrance fee). Peak-hours reservations are valid for three consecutive days (including arrival date). Each user can make one reservation for each three-day period. The reservation holder must be in the arriving vehicle and show photo ID at the entrance station.

Your reservation for **in-park lodging or camping, a Half Dome permit, or a wilderness permit** allows you to enter the park 24 hours per day for the duration of your reservation or for three consecutive days (whichever is longer). If you have a [wilderness permit](#) reservation (for backpacking) or [Half Dome permit](#), you do not need an additional reservation. Your reservation allows you to enter the park 24 hours per day for the duration of your reservation or for three days (whichever is longer). If you have a wilderness permit, you may enter the park a day before the date on your wilderness permit to stay at a backpacker's campground. A Half Dome permit does not allow you to camp in Yosemite.

You can visit the Hetch Hetchy area of the park when it is open (sunrise to sunset) without a reservation.

SPS Management Committee Meeting Minutes Monday, July 22, 2024, via Zoom

1. Call to Order at 7pm PST, present: Jason Pair, chair; Phil S. Bates, secretary; Dylan Kilby, outreach; Laura Newman, treasurer; Tina Bowman, *Echo* co-editor; Patty Kline, merchandise; Joe Wankum, webmaster; Dan Richter, archives; Gary Schenk, outings, Doug Mantle, safety chair; and Kathy Rich, emblem committee.
2. Standard business and reports
 - a. The minutes were approved for the last MC meeting on May 6, 2024.
 - b. Chair (Jason Pair)
 - i. In advance of the meeting, Jason distributed examples of the types of merchandise the SPS could market via RedBubble.
 - ii. Jason led a discussion about future options for SPS merchandising of T-shirts, ball caps, patches, and other items. With participation from many attendees, the committee's preference was to keep open the option for both new, on-line sales of lower cost SPS merchandise via RedBubble and existing mail-order sales of traditional SPS merchandise. Reflecting the traditional design features and the need to maintain an inventory, many committee members supported a premium pricing for the traditional T-shirts. RedBubble offers the flexibility of no inventory requirements, as well as a choice of colors and fabric. With a dwindling supply of traditional merchandise, Patty plans to contact a possible new, local producer of T-shirts. Patty indicated that she would inquire about the pricing of new SPS T-shirt made of polyester, which the committee believed would be more attractive to climbers than the cotton fabric used for existing SPS T-shirts.
 - iii. Reflecting the practices of some other hiking and climbing organizations, Jason asked about the desirability of encouraging members to include donations to the SPS in their estate planning arrangements. However, this option for revenue raising was deemed unworkable due to the Sierra Club's discretion to use the funds of any Club subsection (including the SPS) for whatever purposes are deemed appropriate by the national organization.
 - c. Secretary and Chair of the Emblem Committee (Phil S. Bates): No new SPS emblems were awarded by the Emblem Committee over the past two months. Keith Christensen expects to complete the SPS list on September 14 on Smith Mountain as part of an SPS outing led by Daryn Dodge.
 - d. Vice Chair (Jim Fleming)—Not present. Jason plans to contact Jim to get an update on his search for a banquet venue and to clarify the planned date for the banquet. Dylan has approached Mike Toffey about speaking at the next SPS banquet in late January 2025. Mr. Toffey expressed a strong interest, and Dylan will follow-up next month during the Sierra Challenge.
 - e. Outings (Gary Schenk): Tina and Tom McDonnell led an SPS climb of Olancha Peak on May 24. Sunny Yi and Jason Park will be leading an SPS-sponsored trip to Red Slate Peak later this summer. Gary noted that WTC is leading ten trips into the Sierra Nevada this year, including an ER trip to Starr King. While in the past the SPS often co-sponsored Sierra trips with the WTC, this coordination practice has lapsed in recent years. Kathy suggested the SPS inquire about the feasibility of co-sponsoring the ER trip to Starr King. Prior to the meeting, Joe distributed links to several old *Echo* issues that referenced past private outings by SPS members, and he suggested this practice might be revisited as a means of increasing the number of group outings, even if on an informal basis. Many committee members expressed strong support for this approach, and there was agreement that an on-line forum was needed to help share information and coordinate planning of private outings by SPS members. The SPS Facebook page was mentioned as one possible forum. In addition, Gary noted that a new separate waiver is now required for trips that enter a national park.
 - f. Treasurer (Laura Newman): Prior to the meeting Laura distributed the June report on SPS finances and provided the current balances for the SPS checking, savings and PayPal accounts, which remained stable. Laura informed the committee of her intention to leave the SPS Treasurer position at the end of her current term, reflecting conflicting demands on her time. To facilitate the search for a replacement, Laura plans to circulate to committee members a listing of the treasurer's responsibilities and the key skills required for the position.

(Continued on page 22)

PASSAGES

Missing Randy Bernard

April 9, 2024

Tina Bowman
283 Argonne
Long Beach, CA 90803

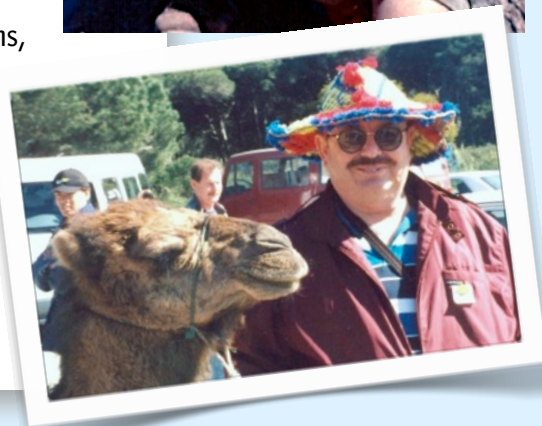
Dear Tina,

The following is for inclusion in the next edition of The Sierra Echo:

Saddened was I to read in the April-June Echo of Randy Bernard's passing. My relationship with Randy started with his signing my BMTC completion certificate on January 30, 1974. Since then, Randy has regaled me and other club members with oodles of funny jokes; videos; cartoons; and photos of the world's most beautiful bridges, mountains, waterways, etc. Climbing desert peaks seems to have segued into surfing the internet once knees and joints started to complain. His sense of humor infused the choice of subjects he chose to share. He and his wife, Joyce, attended January's SPS Banquet. Alas, seeing him there was a final good-bye. I shall miss his quirky personality.

Sincerely, Mary Motheral

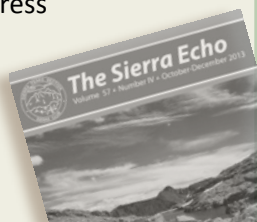
Other remembrances of Randy Bernard appeared in Passages in the July *Echo*.—The Editors.



Top: Joyce and Randy Bernard in the Sierra.
Below, Randy made friends everywhere
(Photos courtesy Randy Bernard).

REGARDING DISTRIBUTION OF THE ECHO

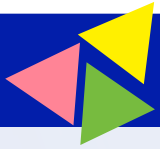
Please contact this email address
newsletter@sierrapeaks.org
for any problems with
distribution of hardcopy
or email versions.



The Sierra Echo

is a quarterly publication of the Sierra Peaks Section of the Sierra Club's Angeles Chapter. For more information, see the back of this newsletter. All questions, copy, and photo submissions should be directed to Tina Bowman, Editor, *The Sierra Echo*, preferably via email at tina@bowmanchange.com. The *Echo* will be available as a PDF download at the SPS website and via a link sent to all SPS members and *Echo* subscribers.



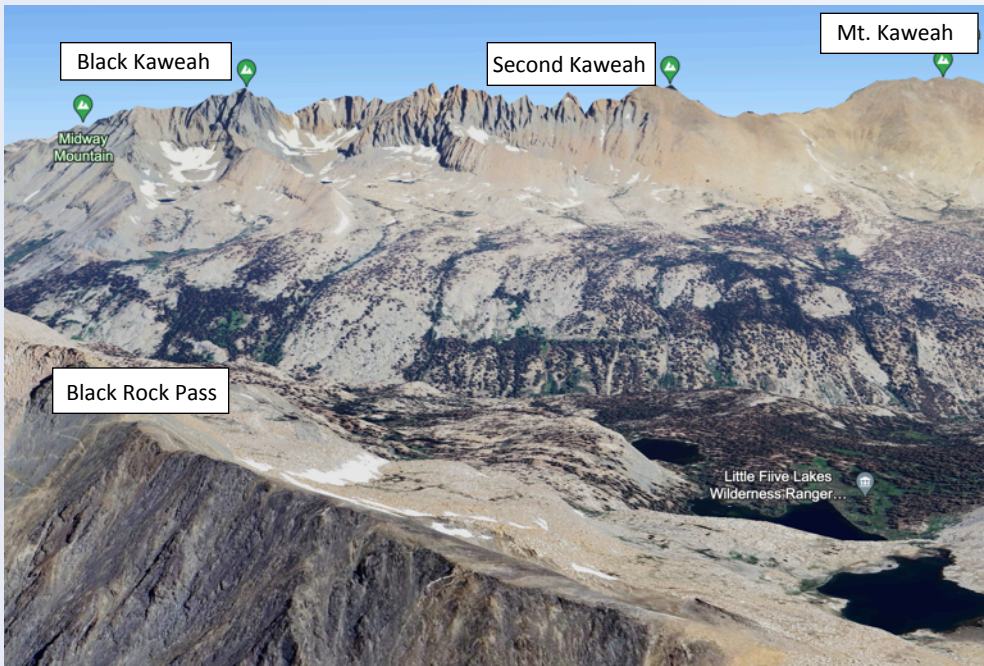


Mystery Peak Challenge Answer

First to answer, about an hour and a half after the link to the *Echo* was sent out, was list finisher Bart O'Brien, writing "The peaks behind are the Kaweahs. Black (far left), Red in the middle (one of my final SPS peaks!), and Mt. Kaweah on the right. Such an awesome ridge!" He guessed that the photograph was taken on Mt. Eisen or Eagle Scout Peak. An hour and twenty minutes later we heard from Lance Dixon, who wrote: "That's the Kaweah Peaks ridge. Black, Red and Second are visible. Mount Kaweah is just out of the picture to the right." He guessed that the photo was probably taken from the Black Rock Pass Trail, showing the Big Arroyo between Randy and the Kaweahs and



commented that he went to the Kaweahs only once "with RJ Secor in the 1980s, but it was a very enjoyable trip." Next was Daryn Dodge (a two-time list finisher) who nailed the peaks but was off about the location where the photo was taken. The next day Ron Bartell wrote, "Whew, good to have an easy one after Virginia in the last issue . . . Black Kaweah at left, Red Kaweah left of center, Big Kaweah almost visible at far right—taken from somewhere on the east



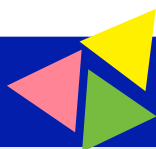
(Google Earth simulation of area and perspective)

side of Blackrock Pass. Bet this will get a record number of correct answers!" Former *Echo* editor Jeff Solomon was next to answer correctly about the peaks and photo location and added that, though he knew of Randy Bernard for many years, he first met him in person at the last SPS banquet; sitting together, they "talked stories and laughed together like old friends." Next we heard from Patty Kline who guessed Muir and Whitney.

(July Minutes, continued from page 20)

- g. Outreach Chair (Dylan Kilby): Dylan is developing an inventory of future posts prior to launching an SPS group page on Instagram, which he plans to

initiate in the next few months. It was noted that the existing SPS Facebook page now has over 1400 members and is facilitating awareness of the SPS. Dylan has approached **(Continued on page 23)**



Mystery Peak Challenge

This occasional just-for-fun puzzle is for you to figure out which Sierra peak or peaks are featured in the image. If you have a fine mystery peak puzzle to challenge *Echo* readers, please send it to tina@bowmanchange.com. We welcome any mountain images, including those from popular culture—imagery used and abused in film and print!

Where was Romain Wacziarg when he took this photo? What SPS peaks can you spot? What is the prominent canyon?

Send your answer to Tina Bowman at tina@bowmanchange.com.



(July Minutes, continued from page 22)

- a significant number of young Sierra climbers about joining the SPS and plans to continue this outreach during the Sierra Challenge next month.
- h. Archives (Dan Richter): Jason plans to send an old and deteriorating Mount Irvine summit register to Dan for addition to the SPS archives.
 - i. *Echo* (Tina Bowman): Tina noted a deadline of August 25 for the next issue of *The Sierra Echo*. Dylan plans to provide an article about this summer's Sierra Challenge.
 - j. Mountain Records (Harry Langenbacher)—Not present. Jason plans to contact Paul Garry about the status of his efforts to assist or replace Harry in his oversight of SPS mountain records.
 - k. IT (Greg Mason)—Not present.
 - l. Website (Joe Wankum): Nothing new to report.
 - m. Conservation (Sharon Moore)—Not present.
 - n. Safety Chair (Doug Mantle): Nothing to report.
 - o. Merchandise (PattyKline): Patty plans to contact Chris Savage about the cost of producing new SPS T-shirts made of polyester fabric.
3. Old Business: Jason noted Tina's query about the desirability of posting photos of new subscribers in *The Echo*, even if the individual was not becoming a member of the SPS. The committee supported the proposal.
 4. New Business: The next MC meeting was set for Monday, September 16, at 7pm PST and will again be held via Zoom.



The Sierra Echo

Volume 68 ▲ Number 4 ▲ October-December 2024

The Sierra Echo is published quarterly by the Sierra Peaks Section (SPS) of the Sierra Club, Angeles Chapter.

Publication dates are Mar 15, Jun 15, Sept 15, and Dec 15. All text submissions for publication—including trip reports, articles, etc.—can be submitted in electronic format such as MS Word (preferred), Pages, email, or through regular U.S. mail (electronic format is preferable). Photos may be submitted as electronic files (jpeg, tiff, or Photoshop in a resolution high enough for print media) or submitted as prints or slides. If submissions are to be returned to you, please include a return envelope with sufficient postage. **All submissions should be sent to Tina Bowman or emailed to tina@bowmanchange.com.**

Deadline for all submissions is three (3) weeks prior to the publication date, i.e., Feb 22, May 25, Aug 25, and Nov 24.

The Sierra Echo is the property of the Sierra Peaks Section of the Sierra Club, Angeles Chapter. All rights reserved. The Sierra Peaks Section maintains a website at www.sierraclub.org/sps.

Subscriptions \$10 per year, due by January 1, delinquent after March 31. Subscribing to the *Echo* is a requirement for membership in the SPS. A suggested donation to the section is \$25, which includes the \$10 subscription and a \$15 donation to the SPS operating fund. Thank you for your support of the SPS. For new subscriptions and renewals or to apply for membership, fill out the subscription and renewal form or new member form that can be found on the SPS website under “Membership Requirements” at the bottom of the page: <https://www.sierraclub.org/angeles/sierra-peaks/new-members#mr>. Mail the form and your check to the SPS Treasurer, 11755 Entrada Ave., Porter Ranch, CA 91326; make sure to include your Sierra Club number if you are applying for

membership. To subscribe or renew on-line, please email the form to the treasurer (sierrapeakstreasurer@gmail.com). Then pay via PayPal for renewals using the email address sierrapeakstreasurer@gmail.com. Note that first-year memberships or subscriptions are free. New applications received after October 1 are credited to the following year. Only one *Echo* subscription is necessary for multiple members of a family residing at one address. Contributions or gifts to the Sierra Club are not tax deductible.

Advertising Private activity announcements and advertisements are accepted at the following rates: \$1 for the first four lines and \$1 each additional line. Other announcements and product/service advertisements are \$1 per line or \$25 for half-page space. Send copy and check to the *Echo* Editor, payable to SPS.

Address Changes Send to the treasurer via email sierrapeakstreasurer@gmail.com.

Peaks List Copies of the SPS Peaks List can be downloaded from the website here: <http://sierraclub.org/angeles/sierra-peaks/sps-peaks-list>.

Missing Issues Inquiries regarding missing issues should be directed to the section mailer at: newsletter@sierrapeaks.org.

Awards Send notification to Secretary Phil S. Bates: email philsbates54@gmail.com. Awards merchandise is available through Patty Kline at 7409 Hermosa Ave, Yucca Valley, CA 92284, and include emblem pins (\$20) and SPS section patches (\$5). Make checks payable to SPS. All prices include sales tax.

**Sierra Club, Angeles Chapter
Sierra Peaks Section
617 West 7th St., Suite 702
Los Angeles, CA 90017**

ADDRESS SERVICE REQUESTED