

Marys Peak Group Executive Committee Minutes

9/10/24

[Zoom link](#)

ExCom: Julie Arrington, Mike Neeley-Brown, Melanie Feder, Mary Beth Downes, Leslie Hogan, Karl McCreary
Present : Dave Eckert
Absent: Robert White
Recorder: Leslie Hogan

Meeting began at 5:58 p.m.

I. Welcome and announcements

Julie ordered 2025 Sierra Club wall calendars for the ExCom, Irene Schoppy and Rose Young as a thank you for their work on behalf of MPG.

II. Motions passed by email:

Melanie made the motion and Mary Beth the second to approve the minutes from our 6/3/24 Ex Com meeting. Passed unanimously on 6/19/24.

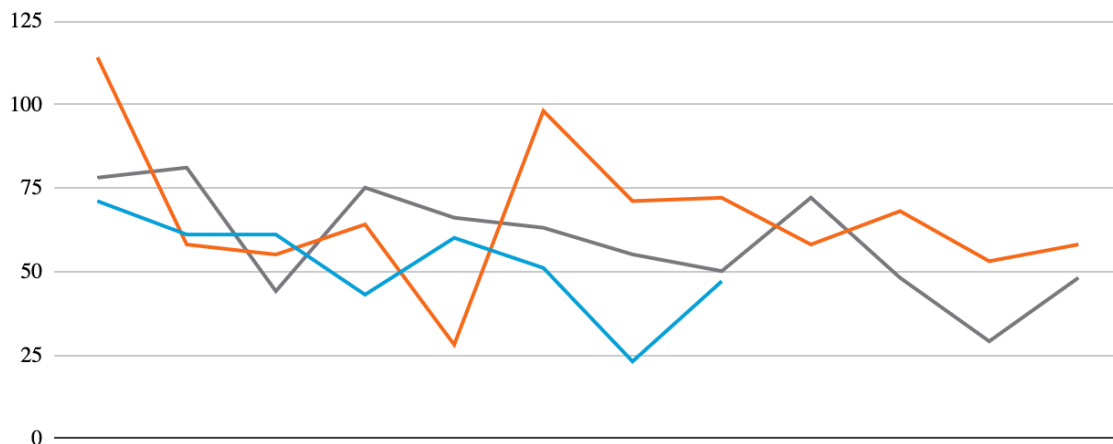
III. Treasurer's report (Robert)

The MPG foundation account has \$250 contributed in the memory of Bob Custer that can now be used for the Champinefu Lecture expenses.

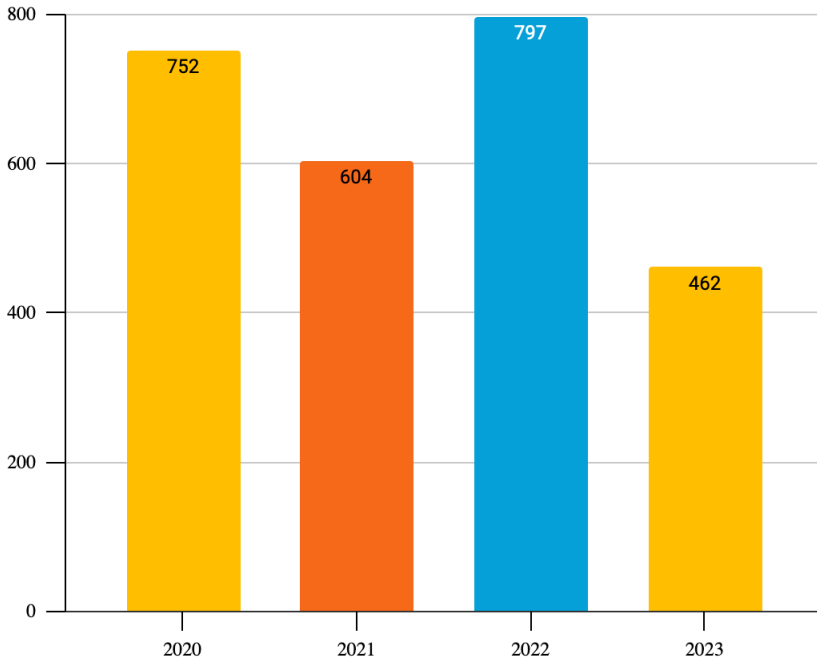
Motion to approve the treasurer's report. Leslie made the motion and Karl the second. All approved and the motion passed.

IV. Membership report (Melanie)

Memberships 2022,2023, 2024



The red line above is 2022. Black is 2023. Blue is 2024.
The chart below is New Members.



MPG currently has a minimum of 1,181 members depending on how many joint accounts there are, Melanie reports.

V. Conservation Projects (Dave)

A. Ridgeview Lookout on Marys Peak Project - The project is on hold due to current lack of funding. The BLM is seeking such funds from internal sources.

B. Marys Peak Rock Garden Protection Project

- A contractor has been hired.
- The concept design has been approved by the U.S. Forest Service
- Work is expected to begin this week and possibly be completed by the end of September.
- If MPG wishes to follow through on requesting funds (\$3,000 of the estimated \$8,000) from the Oregon Sierra Club Chapter, then the process needs to move forward this week. Julie and Dave will draft a letter to send to Chapter and trigger the process of accessing funds.

C. Dunawi Creek Headwaters at Bald Hill Natural Area Interpretation Displays Frame and Pedestal Fabrication Project

- A welder has been contracted and should have the metal frames and pedestals fabricated by the end of September.
- The next step is finding someone to install the pedestals in concrete at the site.

Programs (Dave) - 2024 Champinefu Series

D. October 9th - 7pm - Live program in person on stage

- **shati pi boom boom - Traditional and Contemporary Indigenous Music of Western Oregon**
- hosted by Bobby Mercier, Confederated Tribes of the Grand Ronde
- Live at the OSU PRAX Detrick Concert Hall

- Free admission. Pre-registration required. Seats are assigned in advance. Limited seating. Link to: [Shati pi boom boom | PRAX | Oregon State University](#)
 - The popular Champinefu Series returns with a live evening of *shati pi boom boom* (Songs & Drumming) with Grand Ronde Drum and Round Dance Singers. Bobby Mercier will describe the songs and dance performed by Confederated Tribal members.
- E. November 6 - Webinar on Zoom**
- ***Cultivating Camas and Communities: Tracing People-Plant Relationships in the Willamette Valley***
 - Presenter – Assistant Professor (OSU) Molly Carney
 - To register (in advance), link to: <https://bit.ly/2024champinefu2>
 - Description: Presents how and why Camas is a cultural and ecological keystone plant for Kalapuya. Learn how past peoples cared for and stewarded camas and associated plant communities, the plant's role within everyday life, and how tribal communities are revitalizing traditional plant stewardship practices throughout this region.
 - Bio: Molly Carney is an archaeologist and ethnobiologist who explores how past people interacted with and related to their natural and built environments. Much of her work focuses on life-history traits of cultural keystone species to understand how people stewarded floral and faunal resources in the past.
- F. December 4 - Webinar on Zoom**
- ***Lower Columbia River Art and Placekeeping - An intentional assertion of Indigenous lands, spaces, and relations.***
 - Presenter – Associate Professor (UCSB) Natchee Barnd
 - To register (in advance), link to: <https://bit.ly/2024champinefu3>
 - Presents Lower Columbia River indigenous public art installations which have become insurgent acts sustaining and creating indigenous space. And, a unique cultural geography and reclamation project deployed by the Confederated Tribes of the Grand Ronde activates Placekeeping principles that could be expanded throughout the Willamette Valley.
 - Bio –Natchee Barnd is an Associate Professor in the History of Art and Architecture at UC Santa Barbara. He is trained as a comparative and critical Ethnic Studies scholar and has focused his work on the intersections between ethnic studies, cultural geography, and Indigenous studies. He is author of the book *Native Space: Geographic Strategies to Unsettle Settler Colonialism* and numerous journal articles including the *Journal of Geography*, *Cartographica*, *Mobilities*, *American Indian Culture and Research Journal*, *People and Nature*, *Social Text* in partnership with Natural History Museum, *Urban Geography*, and a special issue of *e-flux Architecture* in collaboration with the Guggenheim.
- G. Champinefu Series Programming by the Confederated Tribes of the Grand Ronde Cultural Resources Program**
- H. The MPG has committed \$1,000 for the Series**, which will fund 2 of the 3 principal singers/dancers in the Troupe.
- I. Champinefu Series Co-Sponsors**
- Marys Peak Group Sierra Club

- Spring Creek Project
- Corvallis-Benton County Public Library
- Corvallis Sustainability Coalition
- OSU School of Language, Culture and Society

VII. Report on the June 22 potluck

Many thanks to Mary Beth for suggesting that we host a potluck and for organizing it. The potluck went very well. People were glad to get together and see each other again. The Willamette Park shelter worked really well. The potluck should be an annual affair.

VIII. Outings (Mary Beth, Mike)

It has become clear that the outings program needs a new policy relating to the timing in submitting hikes to outing chairs and PeakView. Hike leaders henceforth should submit hike offerings a minimum of 24 hours before the Peak View is published at noon on Mondays. In short, leaders should turn in hike proposals to Mary Beth or Mike by noon on the Sunday preceding the Monday publishing date. Also, the hike itself should ideally have a lead time of two weeks before publication.

Mike will contact Irene with requests to edit certain outdated notices on the web page.

VIX. Elections in fall 2024

Marcia Shapiro offered to be on the elections committee again. We need more volunteers to help.

2025 ExCom Executive Committee Election Schedule

- Nominations Committee by 8-12-24
 - Last date to turn in names to Nominations Committee 9-13-24
 - List of candidates by 9-18-24
 - Petitions in by 10-7-24
 - Final list of candidates 10-10-24
 - Mail ballots 11-11-24
 - Voting begins 11-18-24
 - Voting ends 12-16-24
 - Count votes – date to be determined
- Leslie will send in some names of people to ask.

X. Chapter report (Julie)

I have not put together a proposal to ask Chapter to donate \$3000 for the buck and rail wooden fencing to be installed to protect the Marys Peak summit rock garden.

Kai McMurtry, Oregon Chapter's coordinator, has requested that Peak View be available to promote the Oregon Climate Action Corp. Members may opt in or not.

Motion: MPG ExCom should ask that PeakView include notices from the

Oregon Climate Action Corp. Leslie made the motion and Karl the second.
Motion passed.

Emily Bowes was hired as the new Chapter Policy Strategist and has begun her job. She will coordinate legislative & political advocacy. Emily will support the Legislative Committee and serve as the Chapter's registered lobbyist in Salem. She will support the Political Committee in their endorsement process and Get Out the Vote events. She will also help the Conservation Committee coordinate their priorities. Emily lives in Ashland & plans to work remotely and travel as needed. She previously worked for Pacific Forest Trust, working on Mt. Ashland Demonstration Forest. Emily was a big part of the Klamath Dam removal project and spent 3 years as Conservation Director for Rogue Riverkeeper, in coalition with other riverkeeper groups.

The Chapter is now looking for a Conservation Organizer to work on conservation plans like preserving the Owyhee. It's hoped that the person will live in the Bend area.

XII. New Business: Maya Abels is on the leadership team of the Willamette Valley chapter of the Great Old Broads for Wilderness which is a national organization with four active chapters in Oregon. She wrote to MPG saying that The Broads have designated saving the Owyhee as one of its national priorities and have invested time and money to establish a monument. They have engaged in several actions and members have talked directly to Senator Wyden. She asks MPG to become a cosponsor of a talk to be held in Corvallis. Bonnie Olin, author of **The Owyhee River Journals**, has accepted The Broads' invitation to speak in Corvallis for the purpose of promoting interest in the Owyhee and generating support to advocate for establishing a monument.

Motion: MPG agrees to cosponsor, alongside The Great Old Broads of Corvallis, Bonnie Olin's presentation designed to provide education on the movement to make the Owyhee Canyon into a national monument.

Melanie made the motion, Leslie the second. The motion passed.

Melanie will look into possible venues and will be in contact with May Abels.

XIII. Next meeting in January. It will be a joint meeting of the outgoing ExCom and the incoming one. (Julie will send out a Doodle poll as to the exact date.)

Meeting adjourned at 7:15.