



**CLIMATE
ACTION**
COLLABORATIVE

Climate Discourse and Climate Action

June 12, 2024

Specially prepared for Sierra Club Headwaters Chapter

Welcome to Walking Mountains!

A bit about me...



I'd love to learn about all of
you!

1. Name
2. Where you live
3. How long you've been participating in the Headwaters Group



CLIMATE ACTION 
COLLABORATIVE

The Climate Action Collaborative for Eagle County Communities



CAC Formation

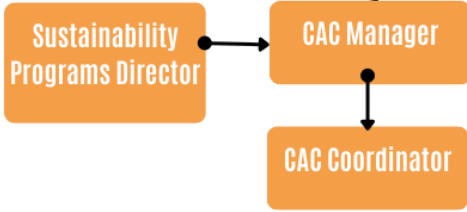
- The Climate Action Collaborative was formed in 2017 to coordinate stakeholders towards the many strategies & goals outlined in the CAP
- The CAC is the neutral (i.e., not connected to a singular government) facilitator of CAP implementation

The logo for the Climate Action Collaborative is displayed on a white rectangular background. It features the words "CLIMATE", "ACTION", and "COLLABORATIVE" stacked vertically in a bold, dark blue, sans-serif font. The letter "O" in "ACTION" is replaced by a stylized sunburst icon with multiple colored rays (blue, green, yellow, orange) radiating from a central point.The Climate Action Collaborative logo is shown in a smaller size at the bottom right of the slide. It consists of the text "CLIMATE ACTION" on the top line and "COLLABORATIVE" on the bottom line, both in a dark blue, sans-serif font. The "O" in "ACTION" is replaced by the same stylized sunburst icon as seen in the larger logo above.

Climate Action Collaborative Board
(all have signed onto the Climate Action Plan)



Walking Mountains Staff



Climate Action Collaborative Organizational Chart

Working Groups



2020 CAP Update

Our goals:

50% emissions reduction by 2030, and
80% by 2050, from our 2014 baseline.

We'll be updating the goal again soon.



CLIMATE
ACTION
COLLABORATIVE

CLIMATE
ACTION PLAN

UPDATE
2020

CLIMATE ACTION
COLLABORATIVE

50% REDUCTION OF EMISSIONS BY 2030

PRIORITY ACTIONS TO ACHIEVE 2030 GOAL

ENERGY SUPPLY

- 100% renewable energy supply for the electric sector by 2030.
- Analyze/develop renewable energy resources through waste-to-energy, methane capture, and digestion.
- Heat waste use and/or renewable energy technology to power district scale snowmelt systems.
- Reduce methane leakage through natural gas system efficiency.

BUILDINGS

- Beneficial electrification of existing buildings 5% per year.
- Adopt net zero or all-electric construction code for new buildings.
- Benchmark commercial buildings $\geq 10,000$ square feet.

WASTE

- 80% organics diverted by 2030. Focus on diversion of all yard waste and cardboard from landfill.
- Divert 100% of all recoverable construction and demolition waste from the landfill by 2030.

TRANSPORTATION

- 2% increase each year of EVs registered in Eagle County.
- Encourage/promote Eagle County commuters to leave car behind 2x per week.
- Move 50% of workforce to live within 5 miles of employment center.



Our Working Groups



Buildings



Transportation



Energy Supply



*Materials
Management*



Water



*Natural Climate
Solutions*

2022 Greenhouse Gas Inventory

Key Findings:

- 6% overall GHG increase since 2014
- Electricity emissions decreased 38% since 2014

Why?

- Better data
- Population increase
- Tourism
- Holy Cross Energy 100x30 goal

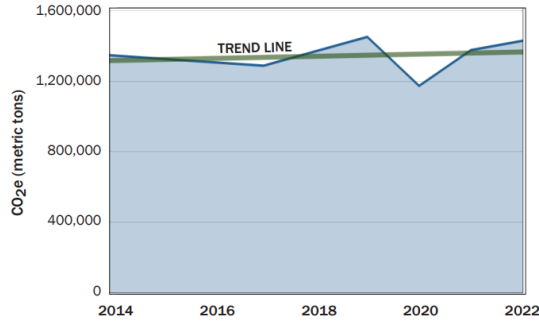


Section 1: Overview of Emissions

1. Total Emissions, 2014-2022

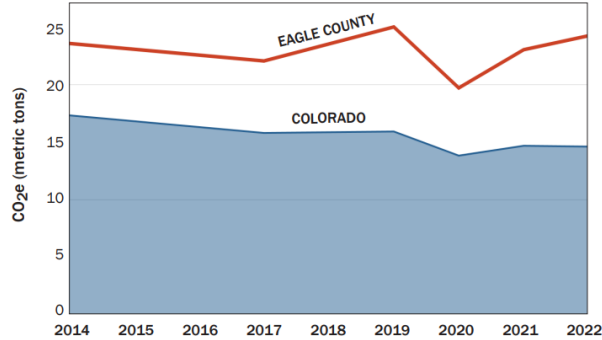
Eagle County set goals of reducing emissions 25% by 2025 and 50% by 2030, compared to 2014 levels. As of 2022, emissions had actually *increased* by 6% since the 2014 baseline year. Based on the trend so far, it is looking highly unlikely that the 2025 goal will be met.

As for the 2030 goal, it is worth noting that more than half of the 2014-2030 period has already passed. Given negative progress in the first half, the County will have to make major course corrections to cut emissions 50% in the next seven years.



2. Emissions per Capita, 2014-2022

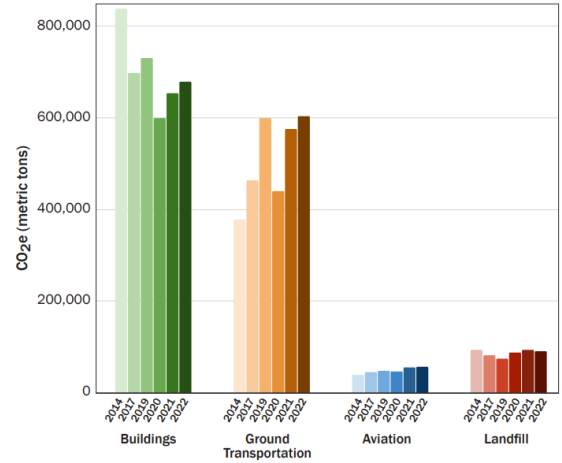
On a per-capita basis, greenhouse gas emissions are higher in Eagle County than in Colorado, and the gap is widening. Contributing factors are transportation, given that commute distances are double the national average; second homes, which make up an estimated one-third of all housing stock; and lodging, which contributes emissions from visitors who are not counted in the permanent population. Understanding that Eagle County's emissions include resort visitors and year-round tourism, measuring per-capita emissions may not be relevant as a comparison to other communities, but is included to show changes over time.



3. Change in Emissions by Sector, 2014-2022

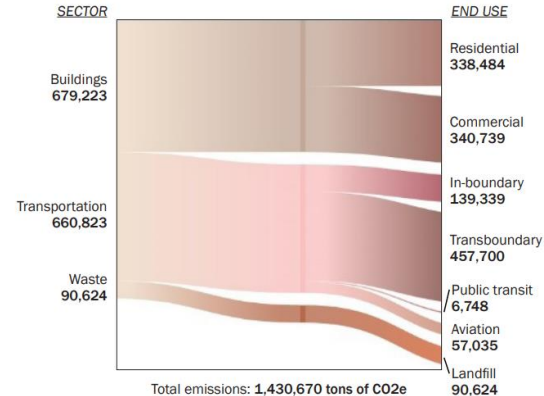
Despite a modest rebound since the pandemic, the building sector has seen a significant (19%) decrease since 2014. Electricity use actually increased 6% during the period - due, presumably, to population increase, EV charging and building electrification - but the growing proportion of renewable energy has more than compensated.

Transportation has trended in the opposite direction, increasing 60% since 2014 due to a steady increase in vehicle miles traveled and increased accuracy in transportation reporting.



4. Emissions by End Use, 2022

This visualization breaks down the major emissions-producing sectors by end use. Notably, commercial buildings account for slightly more emissions than residential buildings. The largest share of transportation emissions results from "transboundary" travel - that is, daily commuters and tourists entering and leaving Eagle County. (This is discussed in more detail in Section 5.) Public transit is shown to be a very small contributor to emissions.



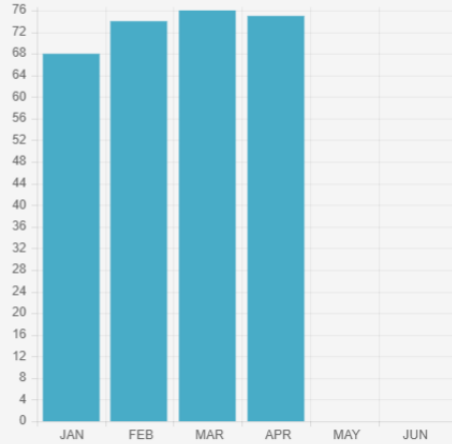
Year-to-date 2024

72%

Clean energy provided to members.

*note: values are estimates until final annual accounting.

Clean Energy Percentages by Month, 2024



CLIMATE ACTION 
COLLABORATIVE

What we need from you!

- Civic engagement! Organized citizen advocacy on behalf of the environment is miniscule in Eagle County - local leaders need to hear from you!
- Hot button topics
 - Electrification of buildings and transportation sectors
 - Outdoor water conservation
 - Climate / public health nexus



**SIERRA
CLUB**

CLIMATE ACTION
COLLABORATIVE

Discussion Questions

- What topics interest you the most, and are in alignment with Sierra Club's goals and mission?
- Let's discuss how we can work together into the future



**SIERRA
CLUB**

CLIMATE ACTION 
COLLABORATIVE

THANK YOU

**I am grateful for your
time and consideration.**

ginam@walkingmountains.org

CLIMATE ACTION 
COLLABORATIVE