

**A PHOTOGRAPHIC HISTORY OF THE  
SIERRA PEAKS SECTION  
1955-2015**



**CLIMB MOUNTAINS  
FOR FUN AND HEALTH  
SIERRA PEAKS SECTION - SIERRA CLUB, L. A.**

This banner is made with a non-polluting adhesive, making it easily removable from surfaces. Reusable, apply to wall. © 2011 The Sierra Club, 5160 La Tijera Rd., L.A., CA 90008

**A PHOTOGRAPHIC HISTORY OF THE  
SIERRA PEAKS SECTION  
1955-2015**

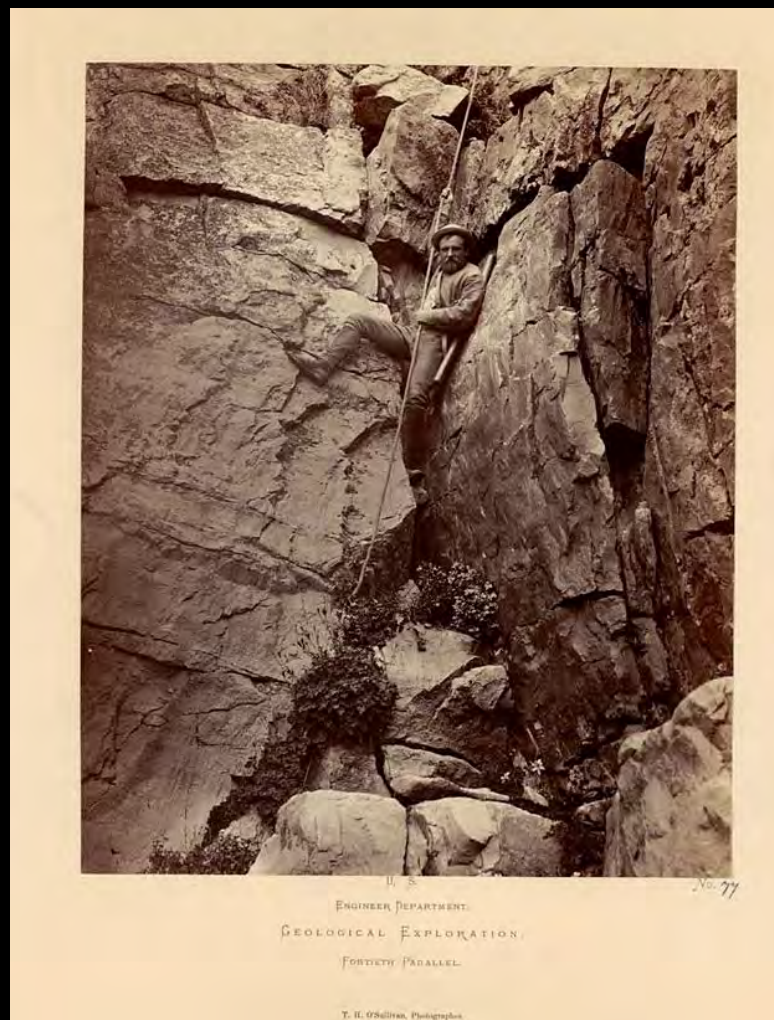


**Prepared by Bob Cates**

**First Presented at SPS 60th Anniversary Banquet, Jan. 25, 2015**



## ROOTS OF SIERRA CLIMBING – CLARENCE KING



**Clarence King**

**Credited with first instance of 'roping down' in Sierra Nevada in 1864**

## ROOTS OF SIERRA CLIMBING



### JOHN MUIR – CALIFORNIA'S FIRST RECREATIONAL MOUNTAINEER

“The mountains are calling and I must go.”

“Climb the mountains and get their good tidings. Nature's peace will flow into you as sunshine flows into trees. The winds will blow their own freshness into you, and the storms their energy, while cares will drop away from you like leaves of Autumn.”

## ROOTS OF SIERRA CLIMBING – SIERRA CLUB HIGH TRIPS



Typical High Trip Mountaineering Outing – Circa 1906

## ROOTS OF SIERRA CLIMBING – SIERRA CLUB HIGH TRIPS



High Trippers on Mt. Ritter, 1918 – Including Southern Sierrans Horsley, Bunn, Tracy, and Dawson



# ROOTS OF SIERRA CLIMBING – SIERRA CLUB HIGH TRIPS



Norman Clyde

Clair Tappaan

Will Colby

HIGH TRIP GROUP IN YOSEMITE, 1921

## ROOTS OF SIERRA CLIMBING – SIERRA CLUB HIGH TRIPS



Norman Clyde Guiding a Woman Climber, 1920s



## ROOTS OF SIERRA CLIMBING – SIERRA CLUB HIGH TRIPS



1929 High Trip Included Climb of Mt. Ritter Led by Bill Horsfall

## ROOTS OF SIERRA CLIMBING – SIERRA CLUB HIGH TRIPS



Sierra Club party ascending Mt. Ritter. Sierra Club High Trip of 1929.

L to R: William A. Horsfall, Dr. Charmlee, Miss Hall.

## ROOTS OF SIERRA CLIMBING – SIERRA CLUB HIGH TRIPS 1930 – ROPES COME ON THE SCENE ON DEVIL’S CRAGS



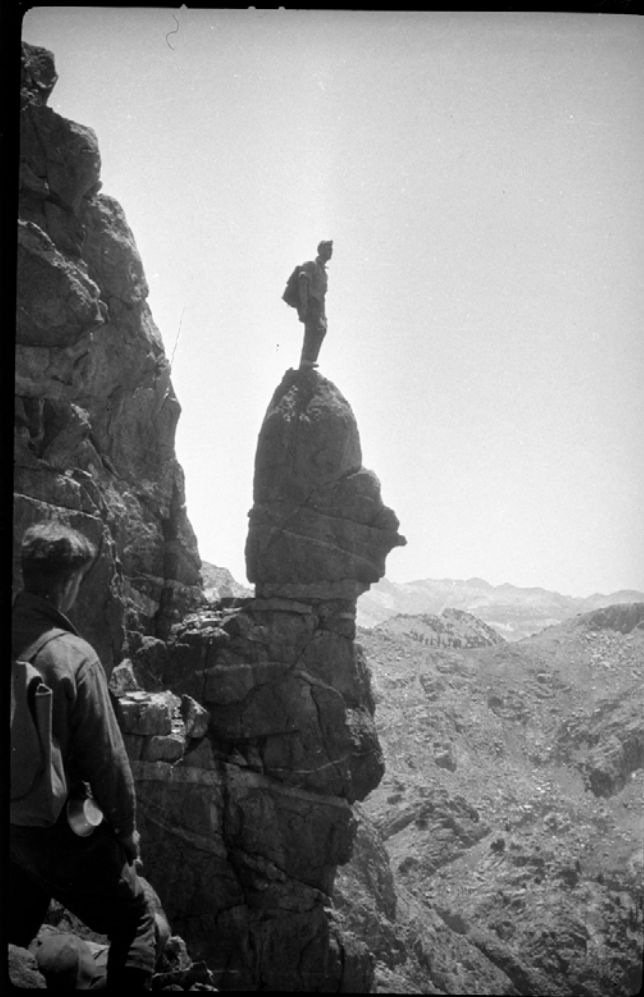
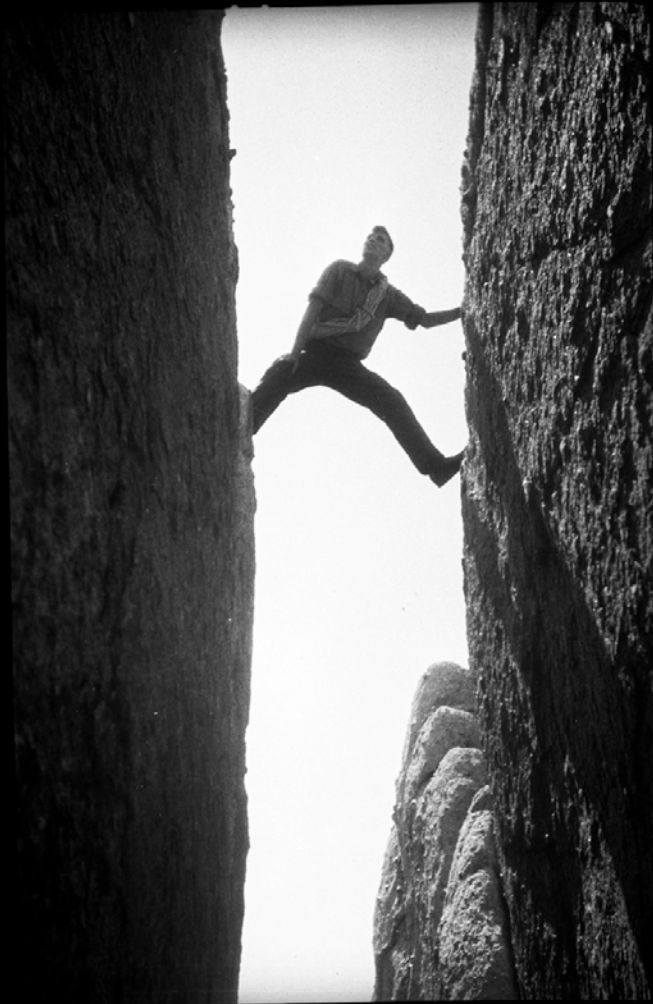
Use of rope in the High Sierra in 1930. There are several claims to first use of the rope that year. This is **JULES EICHORN** on Devil's Crags.

## ROOTS OF SIERRA CLIMBING – SIERRA CLUB HIGH TRIPS



Fifty-seven High Trippers on Summit of Mt. Florence, July 28, 1931

## ROOTS OF SIERRA CLIMBING – SIERRA CLUB HIGH TRIPS



Jules Eichorn and Friends in the Minarets – 1931 High Trip

## ROOTS OF SIERRA CLIMBING – SIERRA CLUB HIGH TRIPS



After the Climb, 1931 – Different Era, Same Results

## ROOTS OF SIERRA CLIMBING – SIERRA CLUB HIGH TRIPS

### 1931 – ROPES ON THE MINARETS

Clyde Minaret

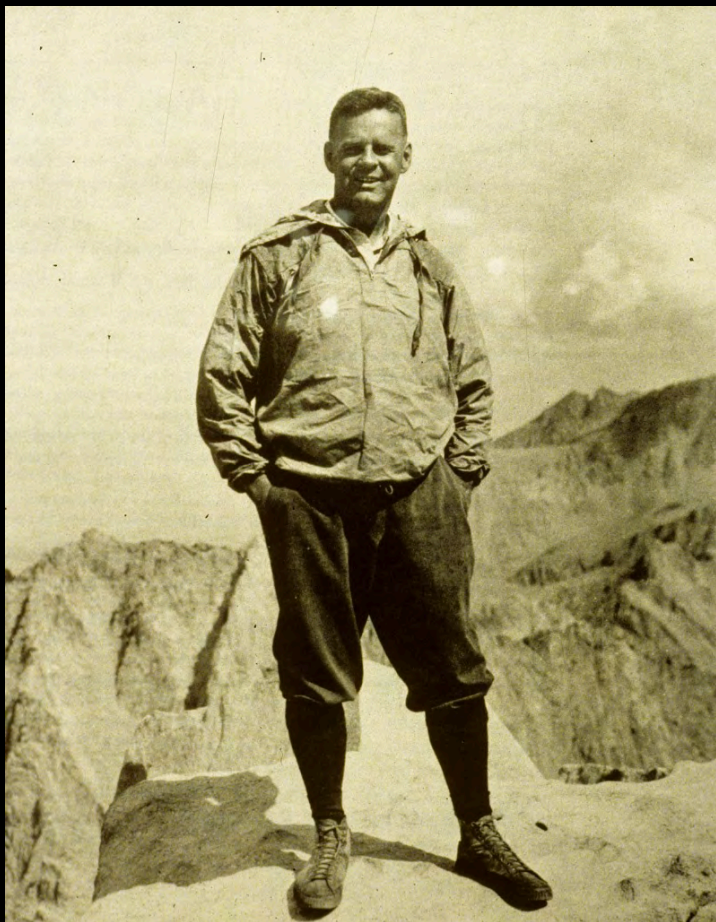
Michael's Minaret

Third Minaret (First Ascent)

Jules Eichorn belaying Walter Brem



## ROOTS OF SIERRA CLIMBING – FRANCIS FARQUHAR 'FATHER' OF SIERRA CLUB MOUNTAINEERING TRADITION



Francis Peloubet Farquhar, 1887-1974

Prominent San Francisco CPA

Historian of the Sierra Nevada (History of the  
Sierra Nevada Still in Print)

President of Sierra Club 1933-35, 1948-49

Editor of SC Bulletin 1926-46 (Made the Bulletin  
one of the foremost mountaineering journals in  
the world.)

Mountaineer With Multiple FA' s

Mt. Farquhar (12,893' ) Named in his honor

**PRIME SPONSOR AND MOTIVATOR OF  
MOUNTAINEERING IN THE SIERRA CLUB**



## ROOTS OF SIERRA CLIMBING – ROBERT UNDERHILL

Professor of Mathematics and Instructor in  
Philosophy, Harvard University

Long Time Member Appalachian Mountain Club

Editor of AMC's journal, Appalachia, 1928-34

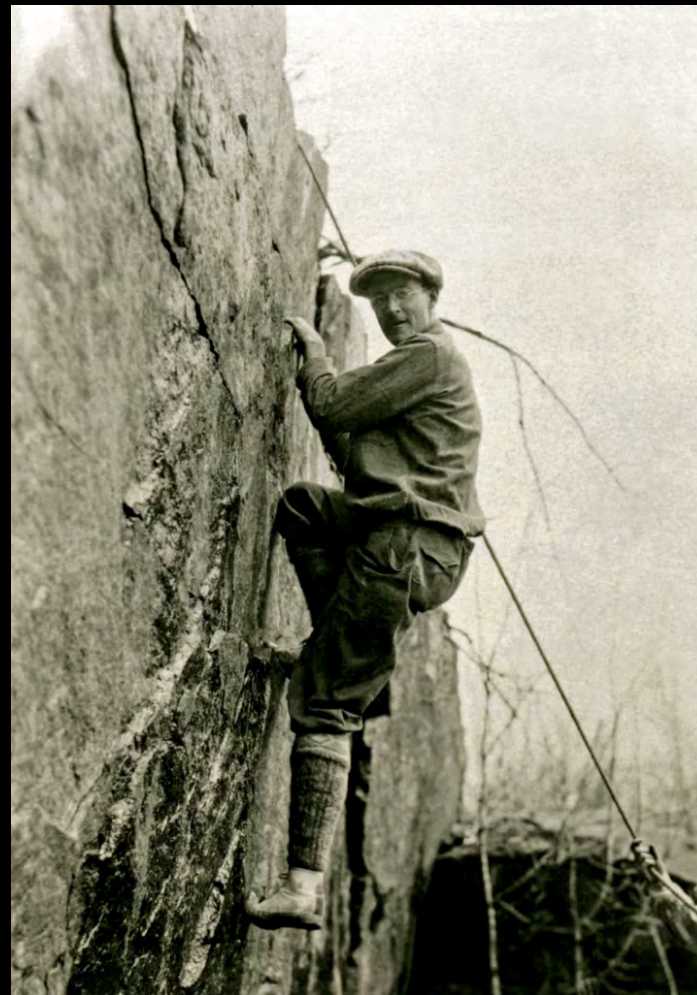
Notable Ascents in Europe

Introduced technical mountaineering to Grand  
Teton NP in 1929, with first ascent of E Ridge of  
Grand Teton

Six weeks climbing in the Tetons in summer  
1931, with a number of first ascents

Underhill Ridge on Grand Teton; Underhill  
Couloir above Palisade Glacier

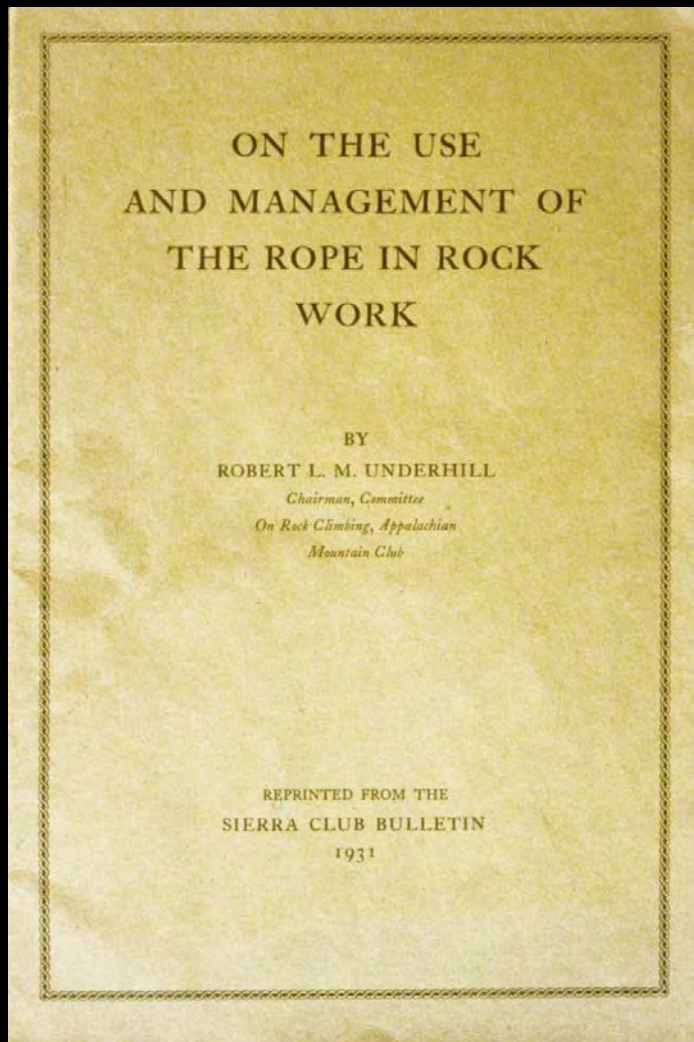
**INTRODUCED MODERN CLIMBING  
TECHNIQUES TO AMERICA IN THE AREAS OF  
ROPE USE, KNOTS, BELAYING AND RAPPELING**



Robert L.M. Underhill, 1889-1983

## ROOTS OF SIERRA CLIMBING – FRANCIS FARQUHAR 'FATHER' OF SIERRA CLUB MOUNTAINEERING TRADITION

### 1931 – SIERRA CLUB GOES TO SCHOOL



In February Farquhar publishes Underhill's seminal article in Sierra Club Bulletin

Lays down the underpinnings of modern rock climbing

After his six weeks of summer climbing in the Tetons, Underhill comes to California at the behest of Farquhar, who sponsors a mountaineering training school for selected Sierra Club leaders . . .

### THE PALISADES CLIMBING SCHOOL

## ROOTS OF SIERRA CLIMBING – FARQUHAR/UNDERHILL 1931 PALISADES CLIMBING SCHOOL



Francis Farquhar, Bestor Robinson, **Glen Dawson**, Neill C. Wilson, Lewis Clark, Robert Underhill, **Norman Clyde**, **Jules Eichorn**, Elmer Collett.

**ROOTS OF SIERRA CLIMBING – FARQUHAR/UNDERHILL  
1931 PALISADES CLIMBING SCHOOL**



**Jules Eichorn & Robert Underhill**



**Francis Farquhar & Norman Clyde**

# ROOTS OF SIERRA CLIMBING – 1931 PALISADES CLIMBING SCHOOL INCLUDED FIRST ASCENT OF THUNDERBOLT PEAK



Socketed in on Thunderbolt, before  
the lightning strike



Underhill on T-Bolt, last man down

## ROOTS OF SIERRA CLIMBING – SUMMER OF 1931 POST-GRADUATE WORK ON WHITNEY



Robert Underhill packing into East Face Lake

## ROOTS OF SIERRA CLIMBING – SUMMER OF 1931 POST-GRADUATE WORK ON WHITNEY



**East Face of Mount Whitney First Ascent**

**Glen Dawson, Robert Underhill, Jules Eichorn, Norman Clyde**

## ROOTS OF SIERRA CLIMBING – SUMMER OF 1931 POST-GRADUATE WORK ON WHITNEY

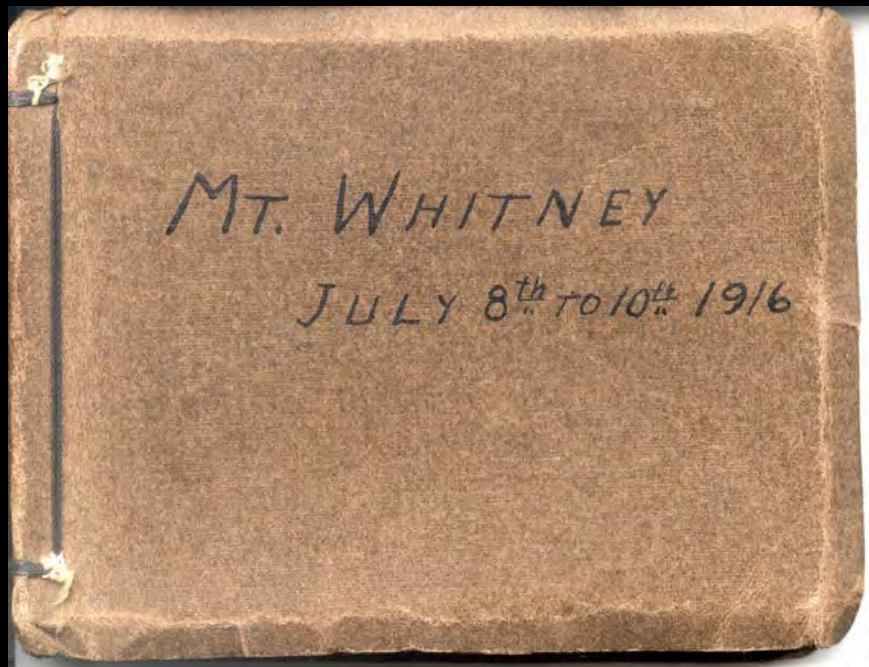


**East Face of Mount Whitney First Ascent**

**Jules Eichorn, Norman Clyde, Robert Underhill, Glen Dawson**



## ROOTS OF SIERRA CLIMBING – EARLY CHAPTER OUTINGS



THE APPEAL OF WHITNEY – 1916

NOTE CANVAS SLEEPING BAGS

## ROOTS OF SIERRA CLIMBING – EARLY CHAPTER OUTINGS



THE APPEAL OF WHITNEY - 1916

## ROOTS OF SIERRA CLIMBING – EARLY CHAPTER OUTINGS

Mt. Whitney  
Sierra Club Trip  
July 15-19-1925  
The highest peak in  
the United States



Mt Whitney in a distance.



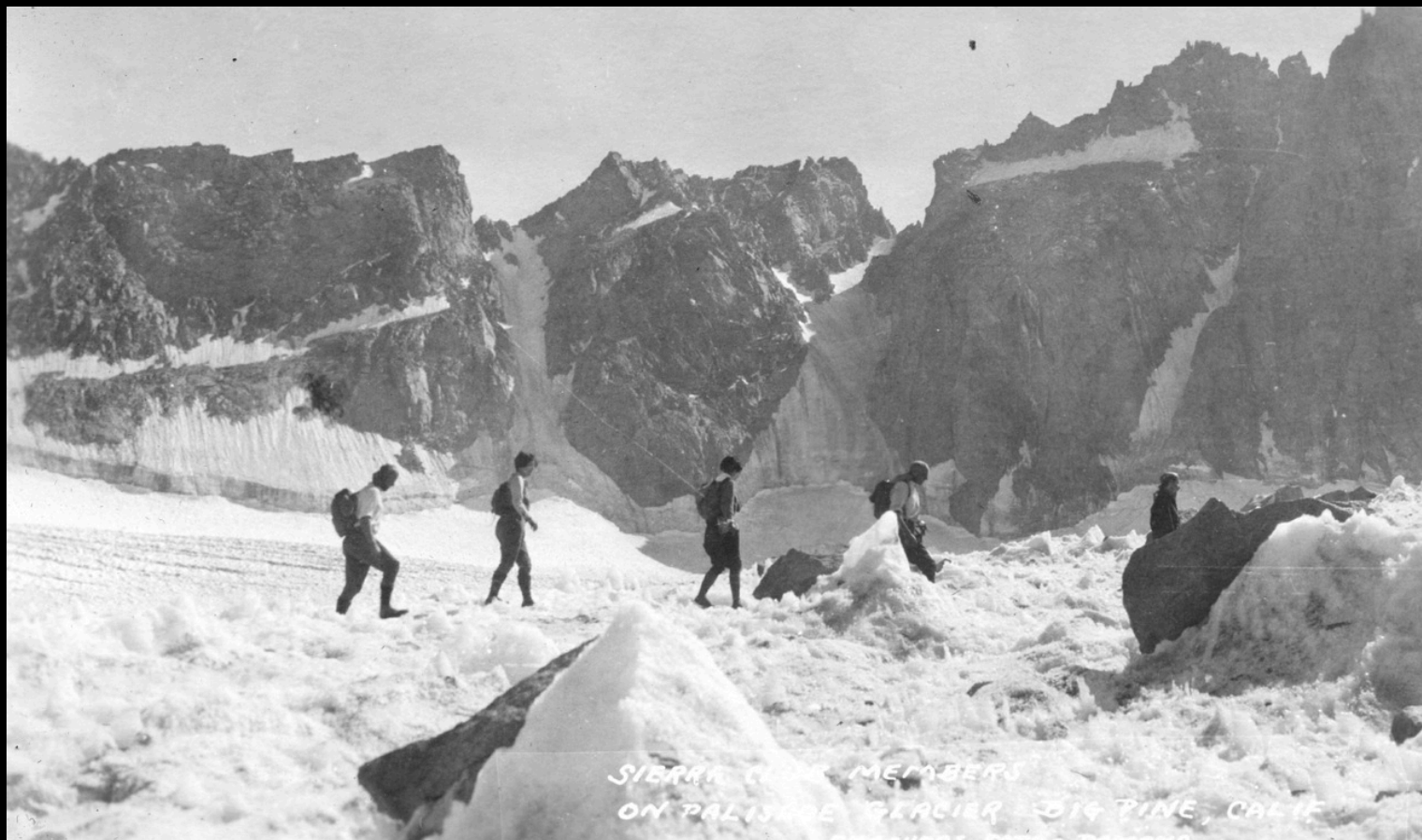
THE APPEAL OF WHITNEY - 1925

## ROOTS OF SIERRA CLIMBING – EARLY CHAPTER OUTINGS



Southern Sierrans on Palisades Glacier, circa 1928

## ROOTS OF SIERRA CLIMBING – EARLY CHAPTER OUTINGS



Southern Sierrans on Palisades Glacier, circa 1928

## ROOTS OF SIERRA CLIMBING – EARLY CHAPTER OUTINGS



**Southern Sierrans at Cottonwood Lakes, July 3-5, 1930**

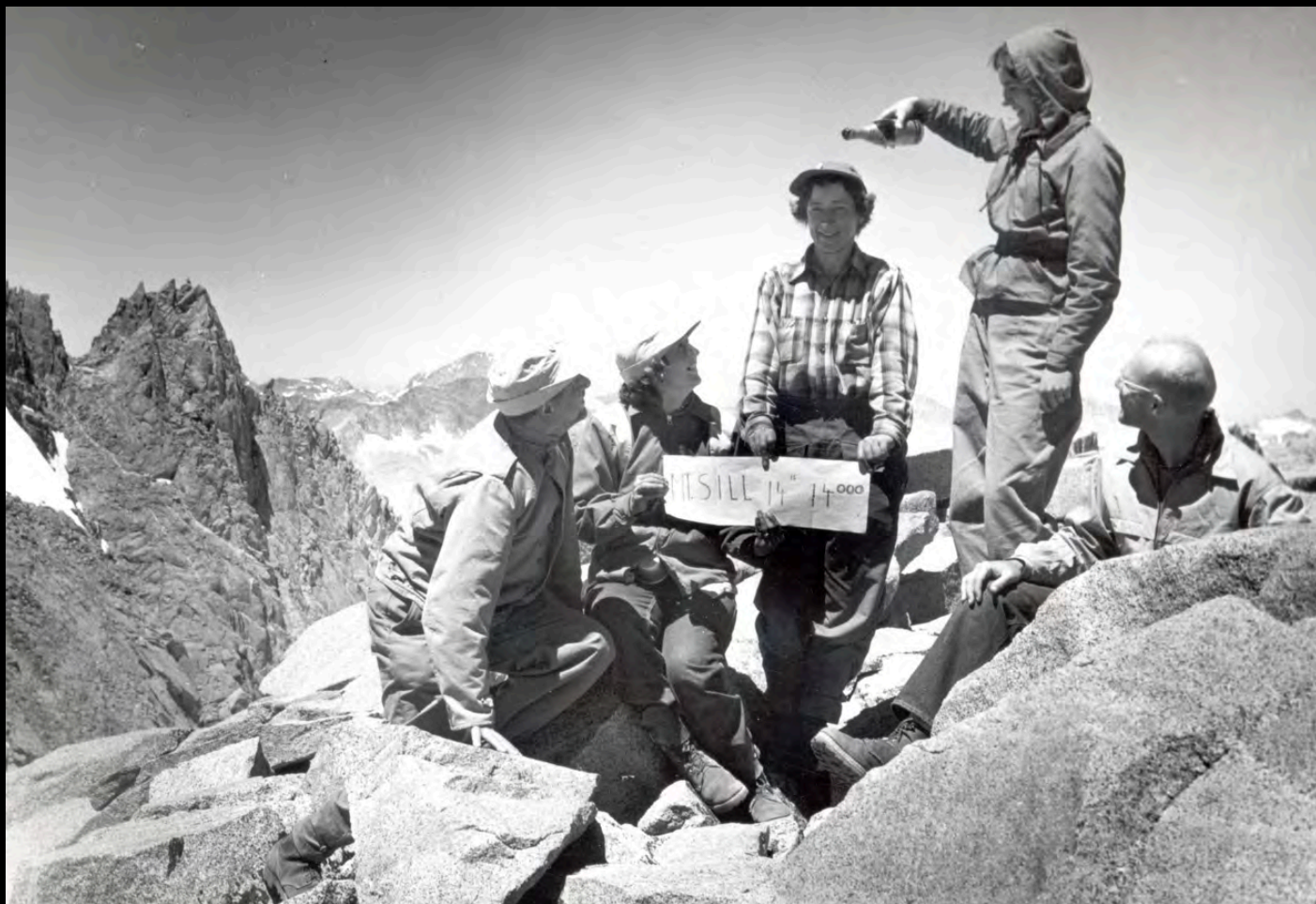
## ROOTS OF SIERRA CLIMBING – EARLY CHAPTER OUTINGS



**They Made It!**

**Note: Louise Werner, wife of Niles Werner at lower left, attained SPS Emblem #118 in 1967**

## ROOTS OF SIERRA CLIMBING – EARLY CHAPTER OUTINGS



The “Game” Prior to SPS – Climb All California 14’ ers

Louise Werner celebrates on Mt. Sill, 1950, with Eric Kent, Elsie Kent, Margie & Bill Henderson



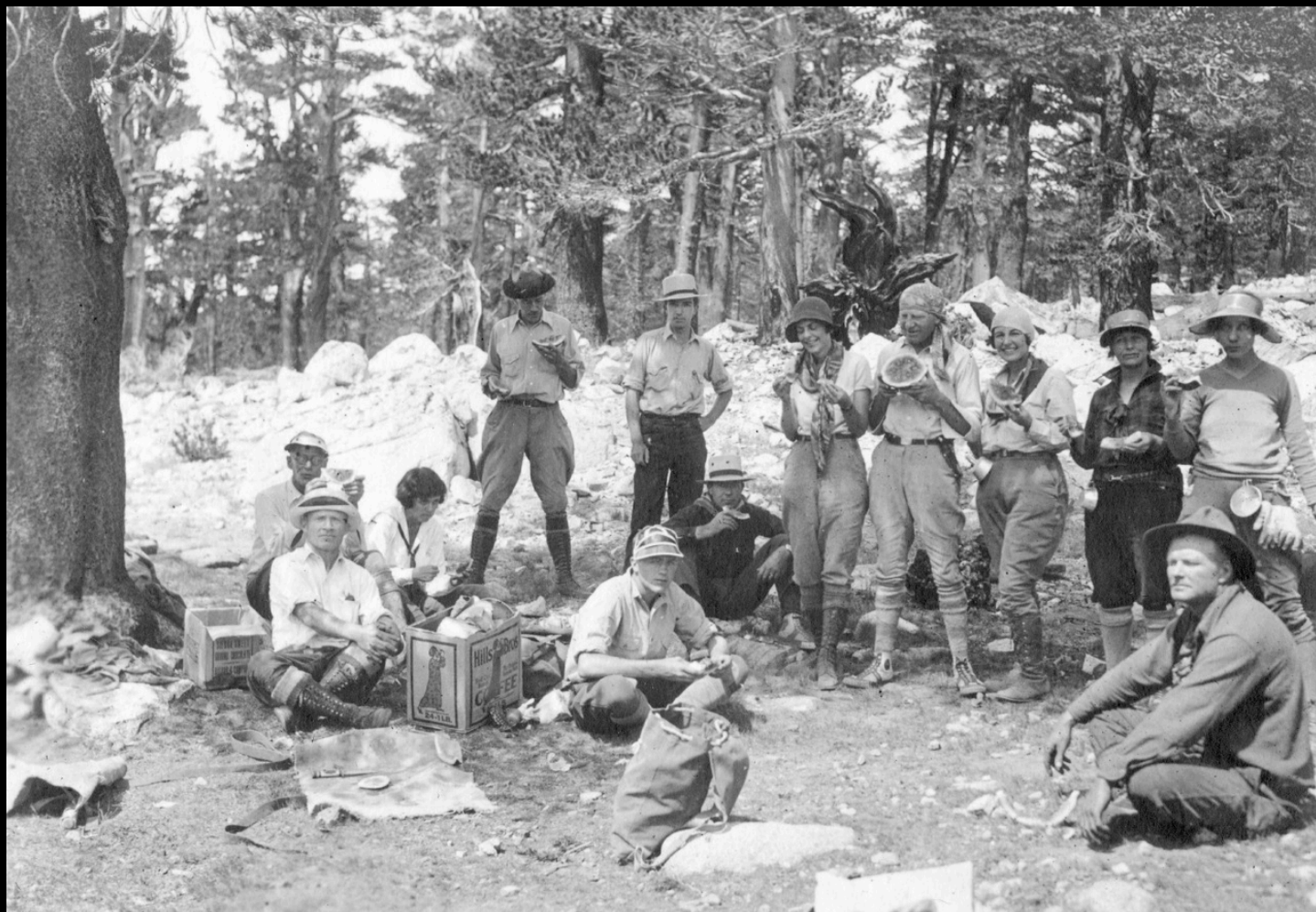
## ROOTS OF SIERRA CLIMBING – EARLY CHAPTER OUTINGS



ON TOP OF MT. WILLIAMSON, High Sierra 1931

Helen Melhorn, D.D.Chalmers, Jim Parsons, Bill Murray,  
Kasper Caspersen.

## ROOTS OF SIERRA CLIMBING – EARLY CHAPTER OUTINGS



Mount Tyndall outing, July 3-4, 1931

Southern Sierrans guided by **Norman Clyde** (sitting far right foreground)

## ROOTS OF SIERRA CLIMBING – EARLY CHAPTER OUTINGS



Mount Tyndall outing, July 3-4, 1931

**Norman Clyde** Teaching How to Rappel

## ROOTS OF SIERRA CLIMBING – EARLY CHAPTER OUTINGS



Southern Sierrans With Typical Backpacks, 1932

## ROOTS OF SIERRA CLIMBING – EARLY CHAPTER OUTINGS



R.S. "Sam" Fink in Sierra Nevada



D.D. Chalmers on Mt. Langley

For the Gearheads: Typical Getups for Sierra Nevada Outings in the 1930s

## ROOTS OF SIERRA CLIMBING – EARLY CHAPTER OUTINGS



Olancha Peak, 1932

Hiking in Ties and Sockless Shoes, But They Made It

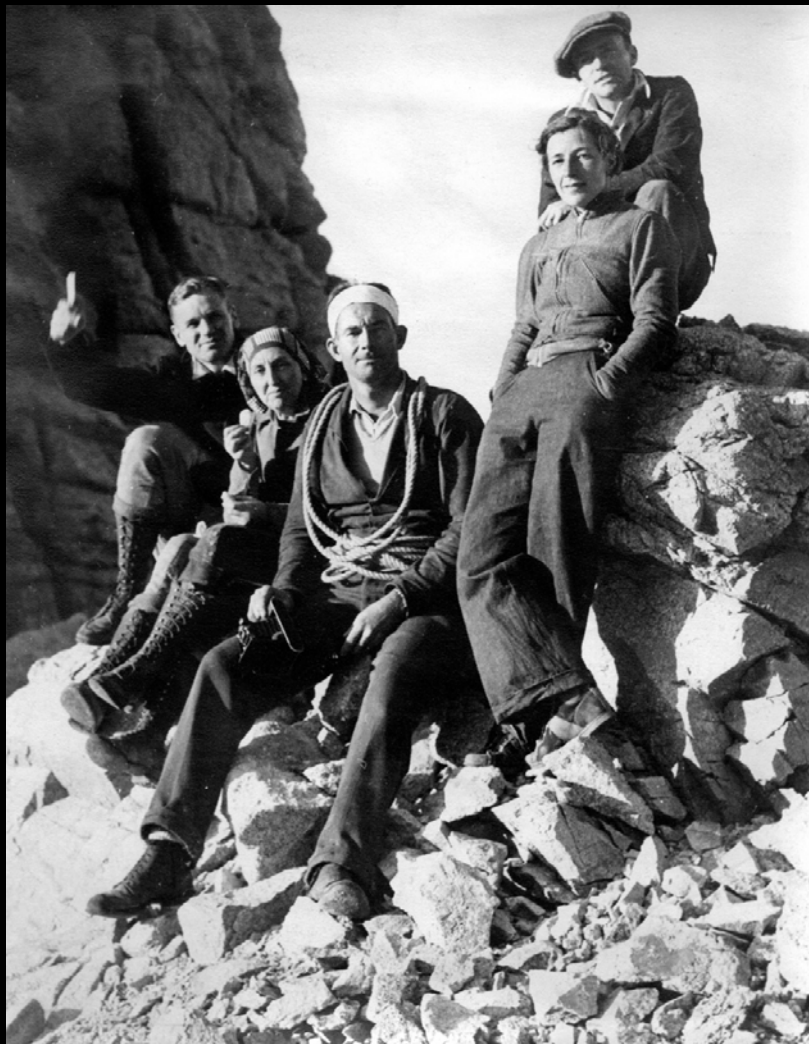
## ROOTS OF SIERRA CLIMBING – EARLY CHAPTER OUTINGS



ON TOP OF SPLIT MOUNTAIN, High Sierra Sept.1937

H.Melhorn, L.Werner, L.Todd, M.Norman, A.Bates, W.Hennies  
R.Smith, D.D.Chalmers, D.Kelly.

## ROOTS OF SIERRA CLIMBING – EARLY CHAPTER OUTINGS



On Whitney, circa 1947

L to R: Jerry Otto, Luella Todd, Dave Richardson, Louise Werner, & Unidentified



## ROOTS OF SIERRA CLIMBING – EARLY CHAPTER OUTINGS



Heading for Some Sierra Peaks, 1948

L to R Eric Kent, Bill Henderson, Louise Werner, Margie Henderson, Elsie Kent

## ROOTS OF SIERRA CLIMBING – THE ROCK CLIMBING SECTION DID MANY SIERRA PEAKS FROM MID-30' S TO MID-50' S



RCS Group on Summit of Whitney after East Buttress climb, Labor Day Weekend, 1938

Front row, L to R: Unidentified, Chet Errett (plaid shirt, RCS Chair 1940-41 and 1941-42), Howard Koster, Agnes Fair, Ray Ingwerson, John Mendenhall. Back Row: Walter Hennies, two unidentified, Ruth Dyar, Wayland Gilbert. The unidentifieds include Don McGeen, George Wilkins, and George Templeton.

**DPS/Knapsack Outings Leading to SPS Formation**

<b>Date</b>	<b>Outing</b>	<b>Leader</b>	<b>Sponsor</b>
<b>1948</b>	<b>Olancha Pk</b>	<b>Niles Werner</b>	<b>DPS</b>
<b>1949</b>	<b>Olancha Pk</b>	<b>Bob Bear</b>	<b>DPS</b>
<b>1949</b>	<b>Lone Pine Pk</b>	<b>Parker Severson</b>	<b>DPS</b>
<b>1950</b>	<b>Mt. Williamson</b>	<b>Jim Bonner/Bill Crookston</b>	<b>DPS</b>
<b>1951</b>	<b>Mt. Mallory</b>	<b>Toni Gamero/Ed Peterson</b>	<b>DPS</b>
<b>1951</b>	<b>Mt. Russell</b>	<b>Bob Bear/Jim Bonner</b>	<b>DPS</b>
<b>1951</b>	<b>Mt. Agassiz</b>	<b>Freda Walbrecht</b>	<b>DPS</b>
<b>1952</b>	<b>Owens Pk</b>	<b>Polly Connable/Ken Rich</b>	<b>DPS</b>
<b>1952</b>	<b>Temple Crag</b>	<b>Bob Bear/Gene Vinson</b>	<b>DPS</b>
<b>1952</b>	<b>The Thumb</b>	<b>Lloyd Balsam/Parker Severson</b>	<b>DPS</b>
<b>1953</b>	<b>Mt. Tom</b>	<b>Virgil Sisson/Freda Walbrech</b>	<b>DPS</b>
<b>1954</b>	<b>Mt. Langley</b>	<b>Toni Gamero</b>	<b>Knapsack Comm</b>
<b>1954</b>	<b>Eagle Mtn</b>	<b>Frank Sanborn</b>	<b>Knapsack Comm</b>
<b>1954</b>	<b>Mt. McAdie</b>	<b>George Wallerstein</b>	<b>DPS</b>
<b>1955</b>	<b>“Sierra Peaks”</b>	<b>Frank Sanborn</b>	<b>Knapsack Comm</b>
<b>1955</b>	<b>Falcon Peak</b>	<b>Toni Gamero</b>	<b>Knapsack Comm</b>
<b>1955</b>	<b>Olancha Pk</b>	<b>Frank Sanborn</b>	<b>Knapsack Comm</b>
<b>1955</b>	<b>“Sierra Peaks”</b>	<b>Toni Gamero/Frank Sanborn</b>	<b>Knapsack Comm</b>
<b>1955</b>	<b>“Sierra Peaks”</b>	<b>Frank Sanborn</b>	<b>Knapsack Comm</b>
<b>1955</b>	<b>Mt. Tyndall</b>	<b>John Delmonte/Barbara Lilley</b>	<b>DPS</b>
<b>1955</b>	<b>“Sierra Peaks”</b>	<b>Toni Gamero, Frank Sanborn</b>	<b>Knapsack Comm</b>
<b>1955</b>	<b>Tunnabora Pk</b>	<b>George Wallerstein</b>	<b>DPS</b>

## DPS/Knapsack Comm Leading to SPS Formation



ON OLANCHA PEAK 6/20/48

Front: P.Connable, E.Kent, B.Crookston, L.Werner  
Center: H.Greenhood, H.Hill, R.Kent, E.Kent, B.&M.Henderson  
Rear: W.Dean, A.Johnson, B.&E.Bear, F.Walbrecht, B.Crookston,  
P.Cyllins, A.Hilton, M.DeDecker.

Desert Peaks Section Outing to Olancha Peak, led by Niles Werner, June 19-21, 1948

## **DPS/Knapsack Comm Leading to SPS Formation**



**DPS Outing to Lone Pine Peak, Aug. 13-14, 1949**

**Most of Those Shown Went on to Become SPS Members**

## Pre-SPS Scouting to the Kaweahs



Two SPS Founders In The Field: 1953 Kaweah Peaks Scouting Trip

L to R: Frank Sanborn\*, Dick Woodward, Owen Blackburn\*

\*SPS Charter Member

## Pre-SPS Scouting to the Kaweahs



**Two SPS Founders In The Field: 1953 Kaweah Peaks Scouting Trip**

**L to R: Owen Blackburn\*, Frank Sanborn\*, Dick Woodward**

**\*SPS Charter Member**

## Pre-SPS Outing to Sawtooth Pk and Vandever Mtn, Aug. 1953



On Sawtooth Pk, August 1953

L to R: Marge Sheller, Millie Stewart, Frank Sanborn\*, John Michelsen, Bob Sheller\*

\*SPS Charter Member



## Pre-SPS Outing to Sawtooth Pk and Vandever Mtn, Aug. 1953



R&R Time, August 1953

L to R: Frank Sanborn\*, Lyle Pyeatt, John Robinson\*, John Michelsen, Frank Bressel\*, Bob Sheller\*

\*SPS Charter Member

## Pre-SPS Outing to Sawtooth Pk and Vandever Mtn, Aug. 1953



SPS Charter Member Frank Bressel

## Private “Outlaw Trips” Contributed to SPS Formation



Private group at Hamilton Lake in the Summer of 1953

Standing, L to R: Frank Bressel\*, Frank Sanborn\*, John Michelson, John Robinson\*, Unidentified Man.

Women in Front Row are Unidentified

## Private “Outlaw Trips” Contributed to SPS Formation



“High Sierra” Outing to Sawtooth Peak (N) and Vandever Mountain, Aug. 7-8, 1953

L to R: Frank Bresse\*, Frank Sanborn\*, Lyle Pyeatt, John Michelson, Unidentified Woman, John Robinson\*, Margie Sheller (later Marge Gall), Bob Sheller\*

## Pre-SPS Outings



Future SPS' ers on Summit of Mt. Irvine, Aug. 30, 1953

L to R: Frank Sanborn\*, Unidentified Woman, John Michelson, Unidentified Woman, Frank Bressel\*

## DPS/Knapsack Comm Leading to SPS Formation



DPS Outing to Mt. Tom, led by Freda Walbrecht & Virgil Sisson – Sept. 19-20, 1953

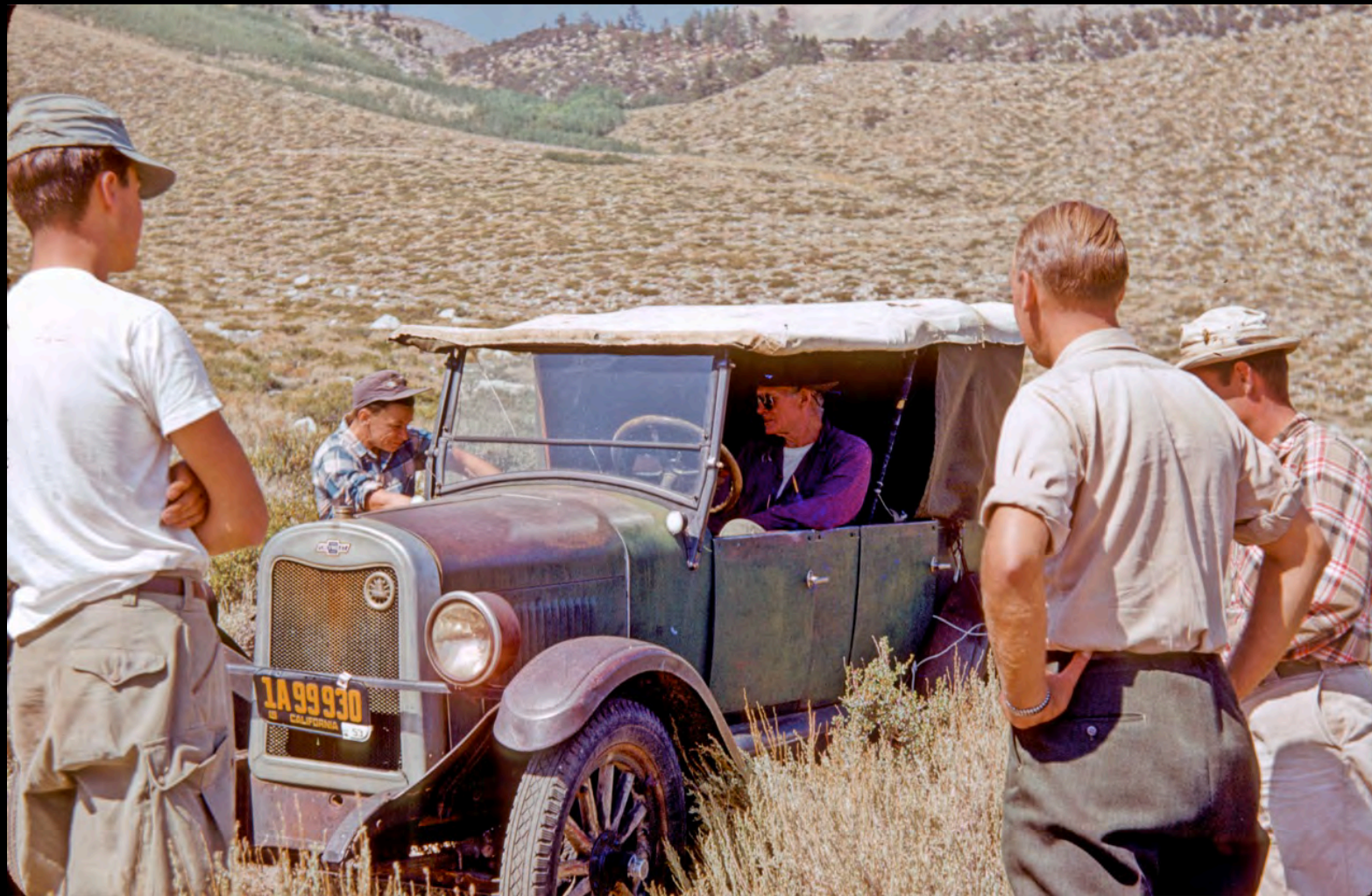
## DPS/Knapsack Comm Leading to SPS Formation



**DPS Outing to Mt. Tom, led by Freda Walbrecht & Virgil Sisson – Sept. 19-20, 1953**

**L to R: Dick Kenyon(?), Frank Sanborn\*, Conrad (Connie) Jarabin, Millie Stewart, Virgil Sisson (wearing red shirt), John Michelsen, Marjorie Jarabin, Barbara Lilley\*, John Wedberg\***

## DPS/Knapsack Comm Leading to SPS Formation



Norman Clyde Shows up on DPS Outing to Mt. Tom – Sept. 19-20, 1953

Freda Walbrecht on opposite side of car



## DPS/Knapsack Comm Leading to SPS Formation



Norman Clyde Shows up on DPS Outing to Mt. Tom – Sept. 19-20, 1953

Group Photo by Frank Sanborn: L to R: Millie Steward, Virgil Sisson, Norman Clyde, Freda Walbrecht, Frank Bressel

## DPS/Knapsack Comm Leading to SPS Formation



Knapsack Committee Outing to Olancha Peak, May 28-30, 1955

L to R: Roger Gaefcke\*, Frank Sanborn\*, Reuben Schreiner, Worthie Doyle, Bob Sheller\*

\*SPS Charter Member

## DPS/Knapsack Comm Leading to SPS Formation



Some Future SPS'ers on Summit of Mt. Mallory, June 1955

Back Row, L to R: Unidentified, Dick Woodward, Barbara Lilley\*

Front Row, L to R: Miles Brubacher\*, Unidentified, Unidentified, Lucy Woodward

## An Outlaw Trip in Aug. 1955



SPS' ers on an Outlaw Trip in Aug. 1955, Shown Here on the John Muir Trail

L to R: Frank Sanborn\*, Ted Maier\*, Roger Gaefcke\*, Chuck Miller\*, Dick Woodward, Jim McGoldrick

\*SPS Charter Member

## Early SPS Outings



All SPS Charter Members on Angora Mtn, April 1956

L to R: Owen Blackburn\*, Pat Meixner\*, John Robinson\*, Chuck Miller\*, Frank Sanborn\*

\*SPS Charter Member

## Early SPS Outings



SPS Outing to Mt. Silliman, Sept. 8-9, 1956, led by Frank Bressell & Pat Meixner

Tom Amneus Nearest to Camera

## Early SPS Outings



SPS Group on Mount Darwin, Aug. 19, 1956

L to R: Graham Stephenson, Pat Meixner\*, Bud Bingham\*, Don Clarke\*, John Robinson\*, Bob Sheller\*

## Early SPS Outings



**Summit of Mount Silliman, September 3, 1956**

**Four in Back Row, L to R: Two Unidentified, Bob Bear, John Robinson\***

**Front Row: Unidentified, Tom Amneus (broad-brimmed hat), Monroe Levy, Parker Severson (straw hat), Three Unidentified**

**\*SPS Charter Member**



## Early SPS Outings



Group on Summit of Trojan Peak, Sept. 3, 1956

Top Row, L to R: Jerry Whitemore, Tom Ross, Andy Smatko

Bottom: Graham Stephenson, Bob "Doc" Wade

## Early SPS Outings



Owens Peak, Feb. 9, 1958

L to R: Frede Jensen (Emblem 35), Unidentified, John Robinson\* (Emblem 2), Burl Parkinson (Emblem 27), Unidentified

\*SPS Charter Member

## Early SPS Outings



Summit of Lone Pine Peak, SPS Outing, May 24, 1959

## Early SPS Outings



SPS Founding Member John Robinson on Dragon Peak, 1959 or 1960

## Early SPS Outings



SPS Group Atop Dragon Peak, 1959 or 1960

L to R: Andy Smatko, Unidentified, John Robinson\*, Unidentified, Frank Bressel\*

\*SPS Charter Member

## Early SPS Outings



**SPS Outing to Mt. Goethe and Muriel Peak, May 25-26, 1963, led by Barbara Lilley\***

**A Heavy Snow Year, 10 Reached Muriel Pk; only 3 got up Goethe**

## Early SPS Outings



SPS Outing to Mt. Goethe and Muriel Peak, May 25-26, 1963, led by Barbara Lilley\*

Frank Sanborn\*, left; Dave Evans, right

## Early SPS Outings



**John Robinson\* (left) and Friends Fly Old Glory and Versteeg Family Flag on Dedication Climb of Mt. Chester Versteeg, Sept. 5, 1965**



## Early SPS Outings



Shepherd Pass, Sept. 5, 1965

L to R: Monroe Levy (Emblem 41), Tom Amneus (Emblem 23), Two Unidentified, Ralph Merton, Two Unidentified, John Robinson\* (Emblem 2)

## Vintage SPS



**Cuno Ranschau and Ron Bartell  
Summit of The Hermit, Aug. 23, 1976**

## Vintage SPS



Barbara Reber, Bob Pohl, Cuno Ranschau, Ron Bartell

Summit of Mt. McGee, Aug. 24, 1976

## Vintage SPS



**George Hubbard, Joe Vasilik, Bill T. Russell, Mike Lorr**  
**Summit of Red Kaweah, July 3, 1977**

## Vintage SPS



**Mary Biehl, John Hellman's Son, John Hellman  
Post-Peak Peach Brandy on Bear Creek Spire, Aug. 7, 1977**

## Vintage SPS



**Sherry Harsh, John Backus, Dale Van Dalsem  
Mono Meadows Trailhead, June 30, 1979**

## Vintage SPS



**Bob Pohl, Cuno Ranschau, Barbara Reber, Delores Holladay, Roy Ward  
Between Emerald Pk and The Hermit, Aug. 22, 1976**

## Vintage SPS



SPS Outing to Mt. Lyell, June 13, 1981

Photo by Tina Bowman



## Vintage SPS



L to R: Doug Mantle, Paul Shubert, and Mike Manchester

Mt. Winchell, July 28, 1984

## SPS HONORARY MEMBERS



**The Three Honorary Members of the SPS Are Shown Here With Robert L.M. Underhill After Their First Ascent of the East Face of Mt. Whitney, Aug. 31, 1931**

**L to R: Jules Eichorn, Norman Clyde, Robert Underhill, Glen Dawson**

**All Deceased Except Dawson, Still With Us at 102 Years of Age**

## THE FIRST ONE HUNDRED EMBLEMS



Oliver Kehrlein (#1)

## THE FIRST ONE HUNDRED EMBLEMS



**John Robinson (#2)**  
**Dragon Pk, 1959 or 1960**



**John Robinson (#2)**  
**Fellow of So. Cal. Historical Soc., 2005**

## THE FIRST ONE HUNDRED EMBLEMS

**Don Clarke (#3)**

**No Image**



**Bob Sheller (#4)**

**Condor Pk, March 1956**

## THE FIRST ONE HUNDRED EMBLEMS



**Pat Meixner Gentry (#5)**  
**With New Kelty Pack, mid-1950s**



**Bud Bingham (#6)**  
**Dorothy Lake**

## THE FIRST ONE HUNDRED EMBLEMS

Henry Mandolf (#7)

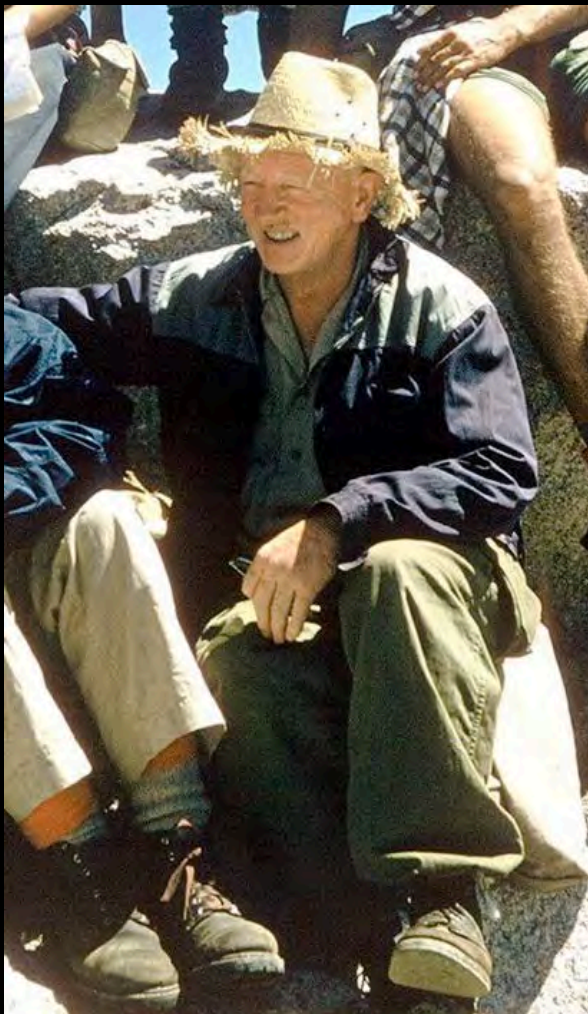
No Image



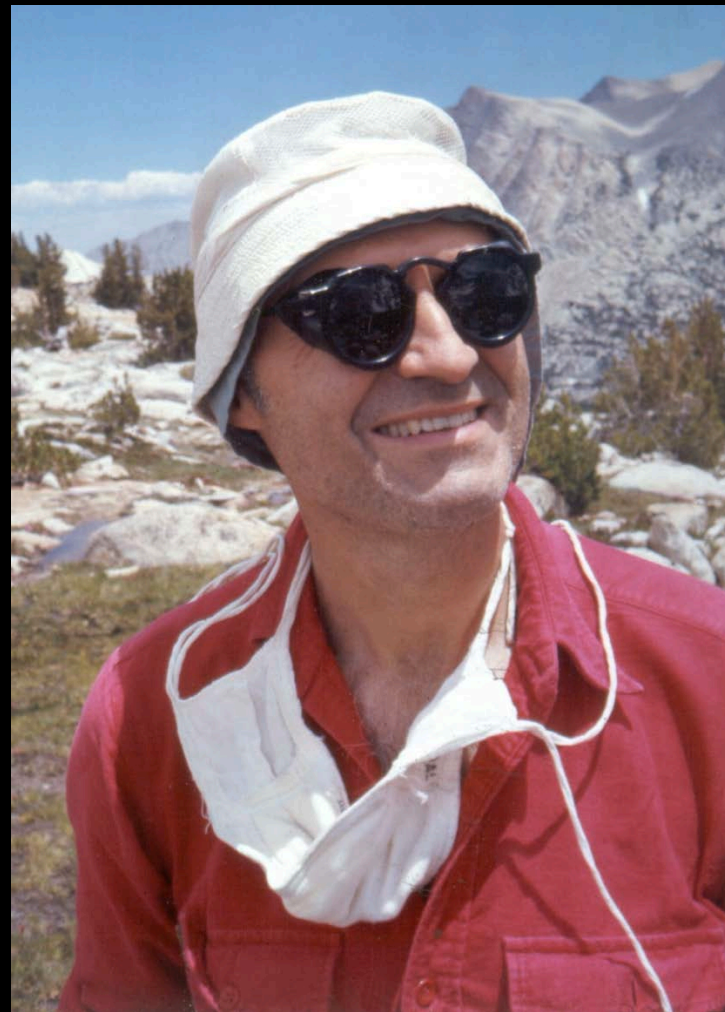
Barbara Lilley (#8)

Baja California, 1950

## THE FIRST ONE HUNDRED EMBLEMS



**Bob Wade (#9)**  
**Trojan Pk, Sept. 3, 1956**



**Andy Smatko (#10)**  
**Granite Park, July 20, 1974**

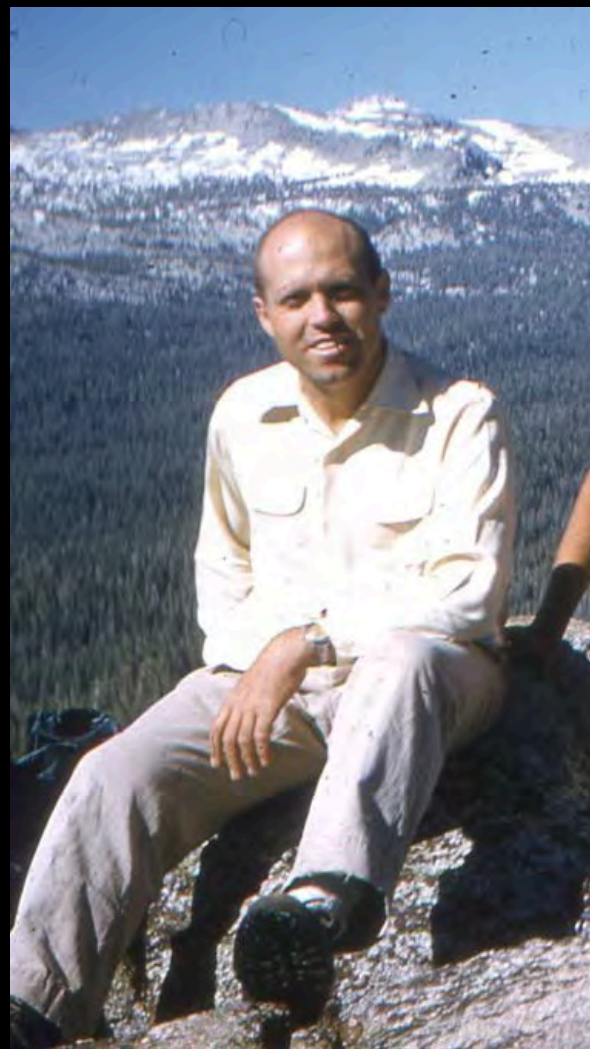


## THE FIRST ONE HUNDRED EMBLEMS



**Tom Ross (#11)**

**Goethe/Muriel SPS Trip, 1963**



**Chuck Miller (#12)**

**Near Summit Lake, June 1958**

## THE FIRST ONE HUNDRED EMBLEMS



**Bill Sanders (#13)**

**SPS Trip to Jepson Pk, 1974**



**Peter Hunt (#14)**

**SPS Trip to N. Palisade, 1959**

## THE FIRST ONE HUNDRED EMBLEMS

Vernon Jones (#15)

No Image



Richard Gnagy (#16)

Finger Lake, 1970

## THE FIRST ONE HUNDRED EMBLEMS



**Bob Bear (#17)**

**Early 1950s**



**Carl Heller (#18)**

**Telescope Pk, 1952**

## THE FIRST ONE HUNDRED EMBLEMS



R.S. "Sam" Fink (#19)

Backpacking into Sierra, 1930s



Walter Collins (#20)

Lone Pine Pk, Aug. 14, 1949

## THE FIRST ONE HUNDRED EMBLEMS



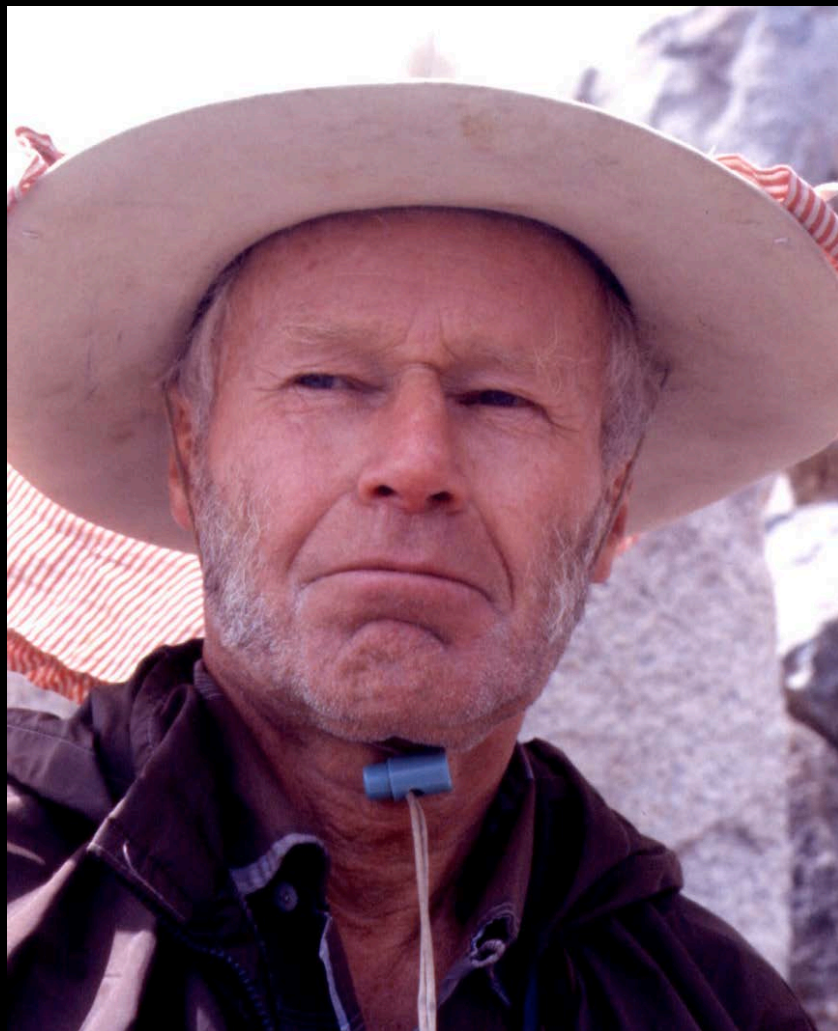
**Paul Estes (#21)**

**After First Ascent Monument Pk, 1940**

**John Shinno (#22)**

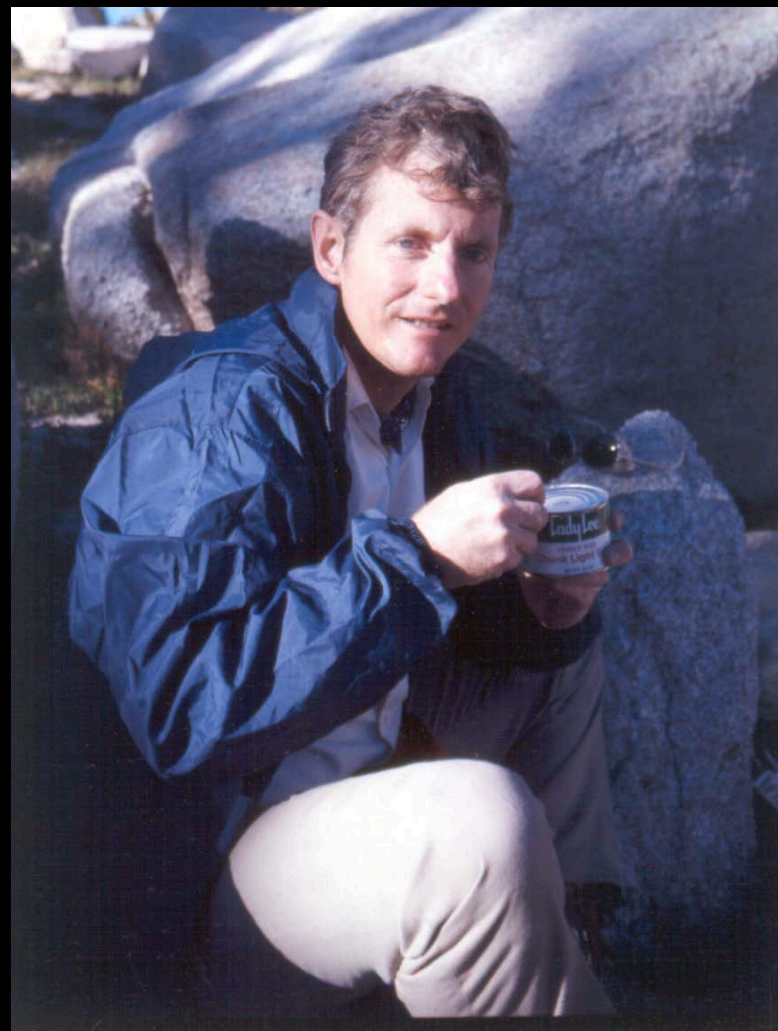
**No Image**

## THE FIRST ONE HUNDRED EMBLEMS



**Tom Amneus (#23)**

**SPS Trip to Forester, 1973**



**Jerry Keating (#24)**

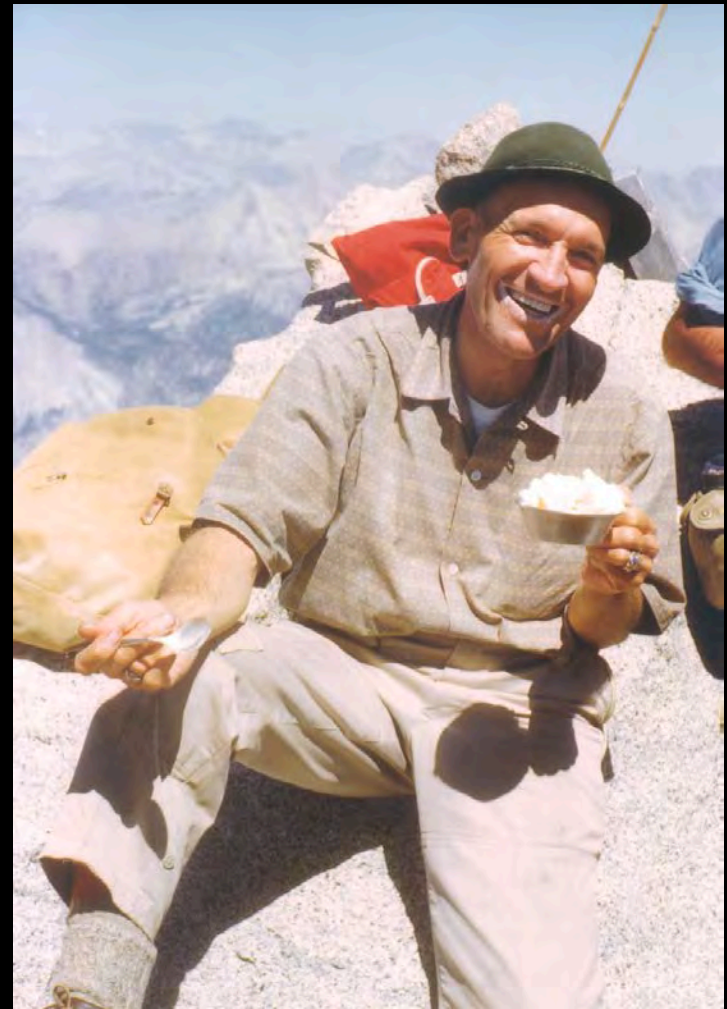
**SPS Trip to Buckeye Pass, 1975**

## THE FIRST ONE HUNDRED EMBLEMS

Don Hamilton (#25)

Charlotte Parsons (#26)

No Images

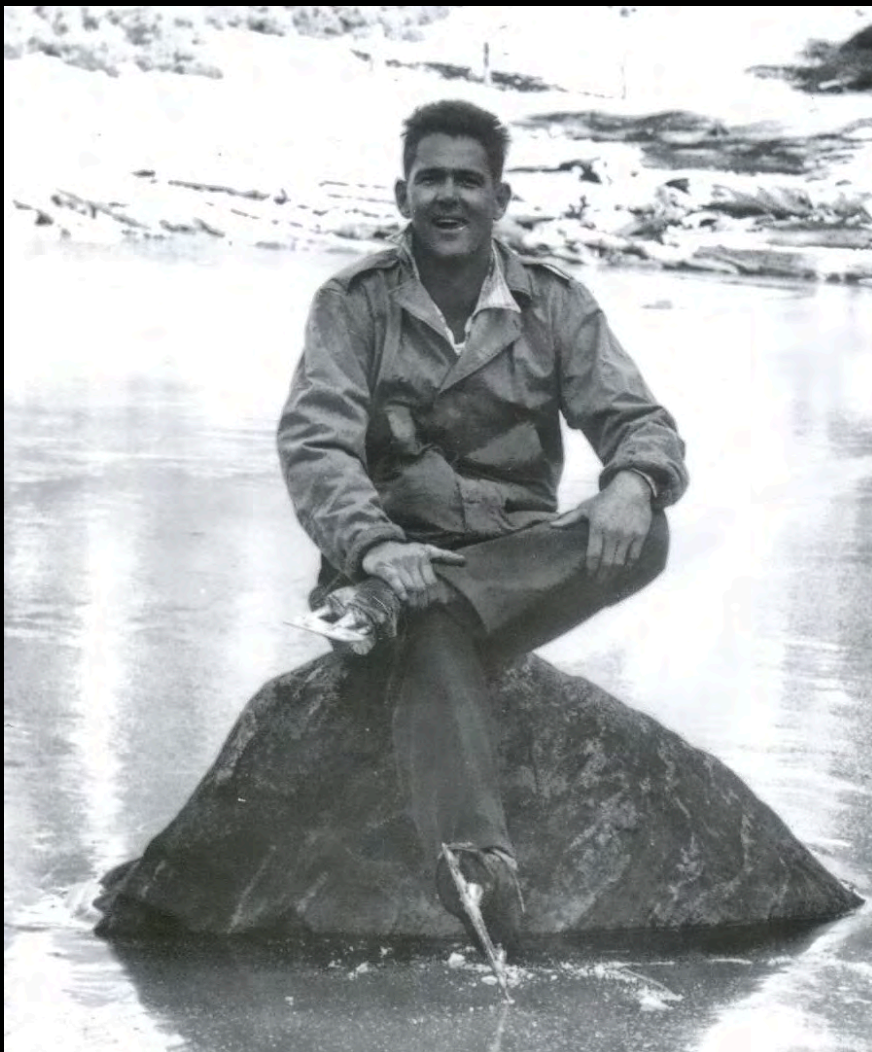


Burl Parkinson (#27)

SPS Trip to Mt. Brewer, August 31, 1958



## THE FIRST ONE HUNDRED EMBLEMS



**Chuck Gerckens (#28)**

**Ice Skating on Dollar Lake, Nov. 10, 1951**



**Bill Heusel (#29)**

**SPS Trip to Brewer, Aug. 31, 1958**

## THE FIRST ONE HUNDRED EMBLEMS



**Mary Eide Miller (#30)**

**Near Summit Lake, June 1958**



**Paul Hunter (#31)**

**Unidentified Desert Peak, late 1940s**

## THE FIRST ONE HUNDRED EMBLEMS



**Miles Brubacher (#32)**

**San Jacinto Mtns, May 1956**

**Lyn Wright (#33)**

**Helen Wright (#34)**

**No Images**

## THE FIRST ONE HUNDRED EMBLEMS



**Frede Jensen (#35)**

**SPS Trip to Owens Pk, Feb. 9, 1958**

**Don Mcgeenin (#36)**

**No Image**

## THE FIRST ONE HUNDRED EMBLEMS



**Richard Jali (#37)**

**1963 Alaska Expedition**



**Nancy Keating (#38)**

**Matterhorn Pk, July 31, 1959**

## THE FIRST ONE HUNDRED EMBLEMS

**Cliff Myers (#39)**

**Maurine Myers (#40)**

**No Images**



**Monroe Levy (#41)**

**SPS Climb of Muah, Oct. 25, 1964**

## THE FIRST ONE HUNDRED EMBLEMS



Peter Hunt (#14)

Tom Hunt (#42)

Trudy Hunt (#43)

## THE FIRST ONE HUNDRED EMBLEMS



**Al Finney (#44)**

**Dick Mosley (#45)**

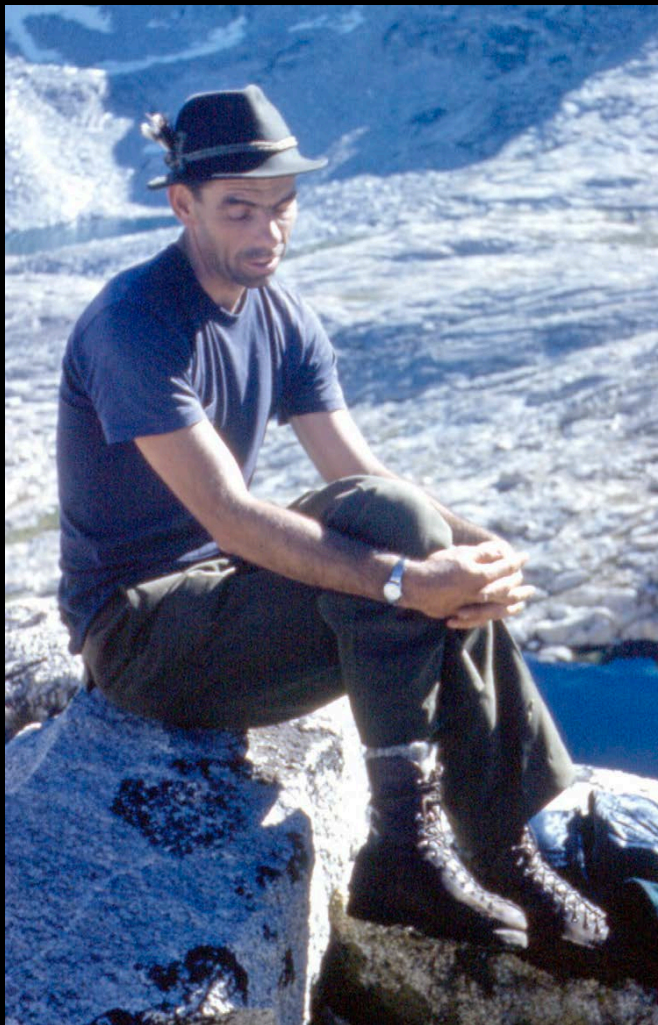
**Charles Modjeska (#46)**

**George Modjeska (#47)**

**No Images**



## THE FIRST ONE HUNDRED EMBLEMS



**Russ Mohn (#48)**

**SPS Trip to Brewer, Aug. 31, 1958**

**Charles Ballard (#49)**

**No Image**

## THE FIRST ONE HUNDRED EMBLEMS



**Marge Gall (#50)**

**Sawtooth/Vandever Outing, Aug. 1953**



**Virgil Sisson (#51)**

**DPS Climb of Mt. Tom, Sept. 1953**

## THE FIRST ONE HUNDRED EMBLEMS

**Robert Stocking (#52)**

**Tom Limp (#53)**

**Reginald Donitelli (#54)**

**John Carroll (#55)**

**No Images**



**George Wallerstein (#56)**

## THE FIRST ONE HUNDRED EMBLEMS

**Allen Dageforde (#57)**

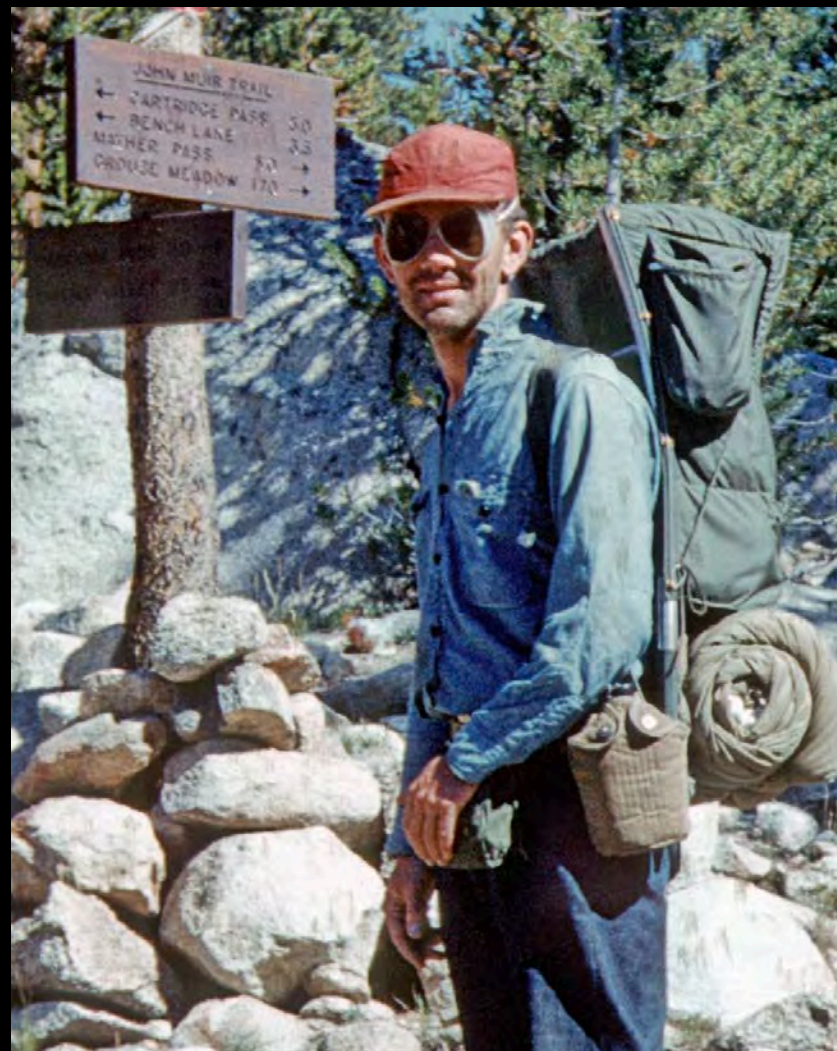
**David Hamren (#58)**

**Steve Brand (#59)**

**Michael Raudenbush (#60)**

**Tom Condon (#61)**

**George Shinno (#62)**



**Ted Maier**

## THE FIRST ONE HUNDRED EMBLEMS

Bunny Rogero (#64)

Steve Rogero (#65)

No Images



Arkel Erb (#66)

April 1971

## THE FIRST ONE HUNDRED EMBLEMS

Mike Hiehle (#67)

No Image



Bill Clifton (#68)

Baja California, 1971

## THE FIRST ONE HUNDRED EMBLEMS



Lothar Kolbig (#69)

SPS' ers at Hot Creek

L to R: Rick Jali, Lothar Kolbig, Ted Maier, Barbara Lilley

## THE FIRST ONE HUNDRED EMBLEMS

**John Spinks (#70)**

**Mike McNicholas (#71)**

**Renne Julian (#72)**

**Vincent Arp (#73)**

**R.J. Furnoy (#74)**

**David Cubberly (#75)**

**No Images**



**Garver Light (#76)**

**Heading to Big Kaweah, 1950s**



## THE FIRST ONE HUNDRED EMBLEMS



**Frank Sanborn (#77)**

**SPS Climb of Muah, Oct. 25, 1964**

**James Nicholas (#78)**

**No Image**

## THE FIRST ONE HUNDRED EMBLEMS



**Steve Wilkie (#79)**

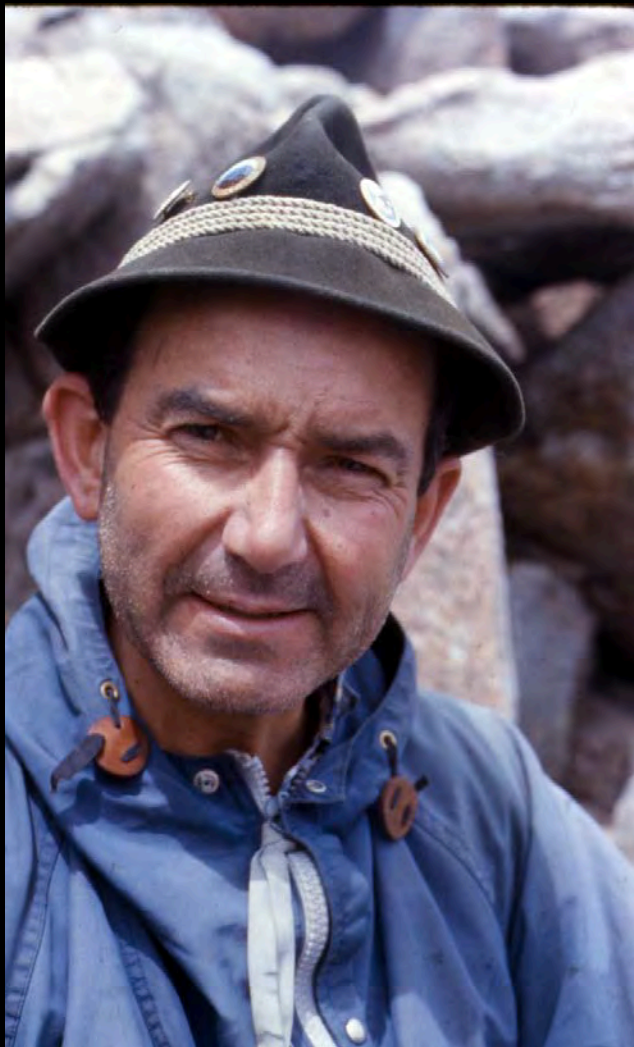
**1980**



**Sy Ossosky (#80)**

**SPS Outing to Mt. Powell, June 1961**

## THE FIRST ONE HUNDRED EMBLEMS



**Gordon MacLeod (#81)**

**Ann Coolidge (#82)**

**Bill Matheson (#83)**

**Bob Lovett (#84)**

**Norman Kussman (#85)**

**John Beebe (#86)**

**Glen Lougee (#87)**

**Steve Fossett (#88)**

**Jim Elder (#89)**

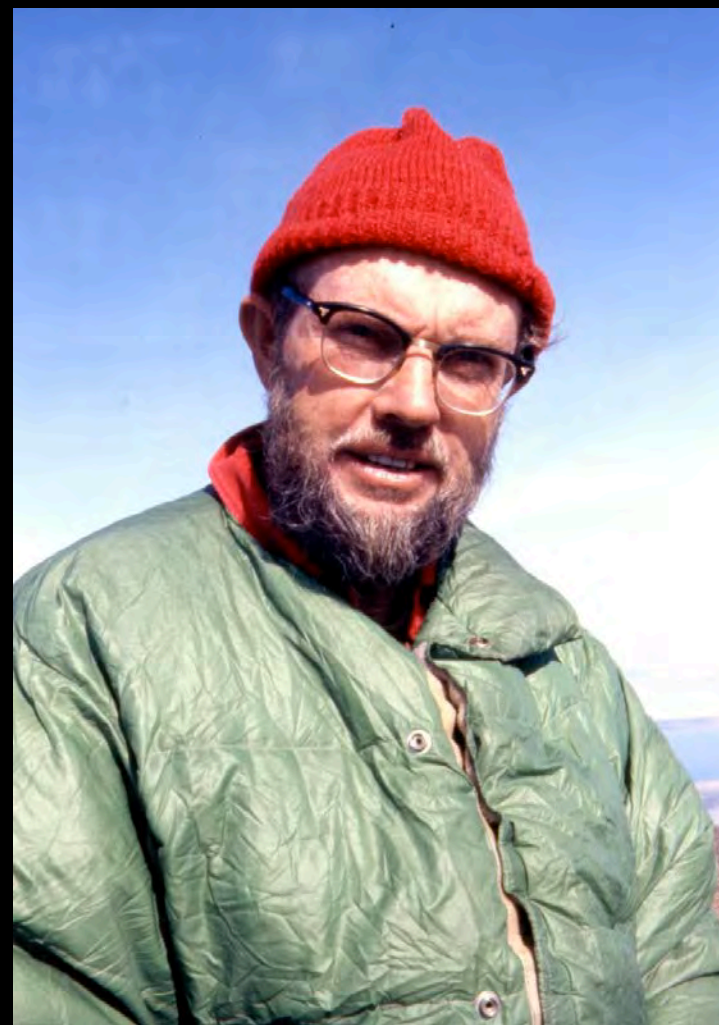
**No Images**

## THE FIRST ONE HUNDRED EMBLEMS



**John Peckham (#90)**

**On Summit of Ixtaccihuatl, Jan. 17, 1965**



**Paul Nelson**

**Rosa Point, Jan. 11, 1975**

## THE FIRST ONE HUNDRED EMBLEMS

Phyllis Kussman (#92)

Jerry Nims (#93)

Harvey Voge (#94)

No Images



Neko Colevins (#95)

Clark Range, June 26, 1965

## THE FIRST ONE HUNDRED EMBLEMS



**Dennis Burge (#96)**

**Alaska Expedition, 1963**

**Irwin Rappolee (#97)**

**Don Rappolee (#98)**

**No Images**

## THE FIRST ONE HUNDRED EMBLEMS



**George Barnes (#99)**  
**Alaska Expedition, 1963**



**Roy Michael (#100)**  
**Popocatepetl, Jan. 18, 1965**

## SPS PERSONALITIES



Mt. Lamarck, 1963



Shaver Lake, 1992

**“Father” of the SPS Frank Sanborn**



**SPS PERSONALITIES**



**SPS Charter Member Barbara Lilley on Avawatz Peak, 1950**

## **SPS PERSONALITIES**



**SPS Founder Frank Sanborn in San Jacinto Mtns, 1953**

**Two Years Before Approaching Chapter Ex-Comm With Proposal for Forming SPS**

## SPS PERSONALITIES



**Some Future SPS' ers, Including Five Charter Members, on East San Bernardino Peak, Oct. 1953**

**Back Row, L to R: Bob Sheller\*, Owen Blackburn\*, Marge Gall, Unidentified Woman**

**Front Row, L to R: Unidentified Man, Roger Gaefcke\*, Unidentified Woman, Bob Schmeltzer, Frank Bressel\*, Two Unidentified Men, Frank Sanborn\***

**\*SPS Charter Member**

## SPS PERSONALITIES



**Six of the Eighteen Charter Members\* of SPS on Palm View Peak in 1956**

**L to R: John Robinson\*, Pat Meixner\*, Jac Lasner, Barbara Lilley\*, Bud Bingham\*, Miles Brubacher\*, Izzy Lieberman\***

**\*SPS Charter Member**

## SPS PERSONALITIES



Early SPS'ers in San Jacinto Mtns, 1953

L to R: John Michelsen, Frank Sanborn\*, Bob Sheller\*, Marge Sheller

\*SPS Charter Member

## SPS PERSONALITIES



Early SPS'ers on San Bernardino Ridge, 1953

L to R: John Robinson\*, Frank Sanborn\*, Lyle Pyeatt

## SPS PERSONALITIES



**Early SPS'ers on Summit of San Jacinto Peak, May 20, 1956**

**Man in foreground unidentified, but others, L to R: Miles Brubacher\*, John Robinson\*, Frank Sanborn\*, Bud Bingham\***

**\*SPS Charter Member**

## SPS PERSONALITIES



L to R: John Robinson\*, Chuck Miller\*, Andy Smatko

Mount Brewer, June 1957



## SPS PERSONALITIES



Tom Ross & Andy Smatko on Arrow Peak, Aug. 31, 1958

## SPS PERSONALITIES



SPS Charter Member Frank Bressel on Summit of Whitney, 1960

**SPS PERSONALITIES**



**Charter Members Pat Meixner and Miles Brubacher on Whitney, July 1956**

**SPS PERSONALITIES**



**R.S. "Sam" Fink (left) and Fred Bode  
Heald Peak Dedication Climb, April 27, 1974**

## SPS PERSONALITIES



Maris Valkass on Mt. Abbot, Sept. 19-20, 1987

**SPS PERSONALITIES**



**Bill Oliver Leading BMTC Weekend at Joshua Tree, Feb. 13-14, 1988**

## SPS PERSONALITIES



**Tom Amneus, Former Angeles Chapter Chair  
Bluebottle Peak, Baja California, April 16, 1973**

## SPS PERSONALITIES



R.J. Secor Carrying “Sawtooth Pass” Sign Back Up to Sawtooth Pass, Sept. 4, 1981



## SPS PERSONALITIES



Lance Dixon on Summit of Mt. Starr-King, Aug. 30, 1981



Jason Winnett  
Highland Pk, Oct. 21, 1978

## SPS PERSONALITIES



Doug Mantle on 5X List Completion, Oct. 2, 1999  
With Duane McRuer, Randall Danta, Tina Bowman

## SPS PERSONALITIES



Mary McMannes on Taylor Dome, Oct. 27, 2001

## SPS PERSONALITIES



**Fran Smith**

**Ruby Dome, Sept. 3, 1977**



**Steve Smith**

**English Mtn, Sept. 23, 1979**

**SPS PERSONALITIES**



**Tina Stough Sporting Her Goldline on  
Mt. Lyell, June 13, 1981**



**Barbara Reber Sporting a Smile in  
Tuckup Canyon, April 1982**

## SPS PERSONALITIES



**Doug Mantle, John McCully, Bob Hicks**

**Mt. Needham, June 18, 1982**

## SPS PERSONALITIES



**Vi Grasso**

**Tower Peak, Sept. 1, 1979**



**Diana Dee**

**SPS Trip to Seven Gables, Aug. 9, 1971**

## SPS PERSONALITIES



**Phil Bruce**

**Rosa Point, Jan. 11, 1975**



**Harry Brumer**

**Signal Pk Trailhead, Jan. 21, 1978**



**SPS PERSONALITIES**



**Greg "Lone Yeti" Vernon  
Castle Dome, Jan 22, 1978**



**Ron Bartell  
Mt. Starr King, July 10, 1977**

## SPS PERSONALITIES



**Roy Magnuson**

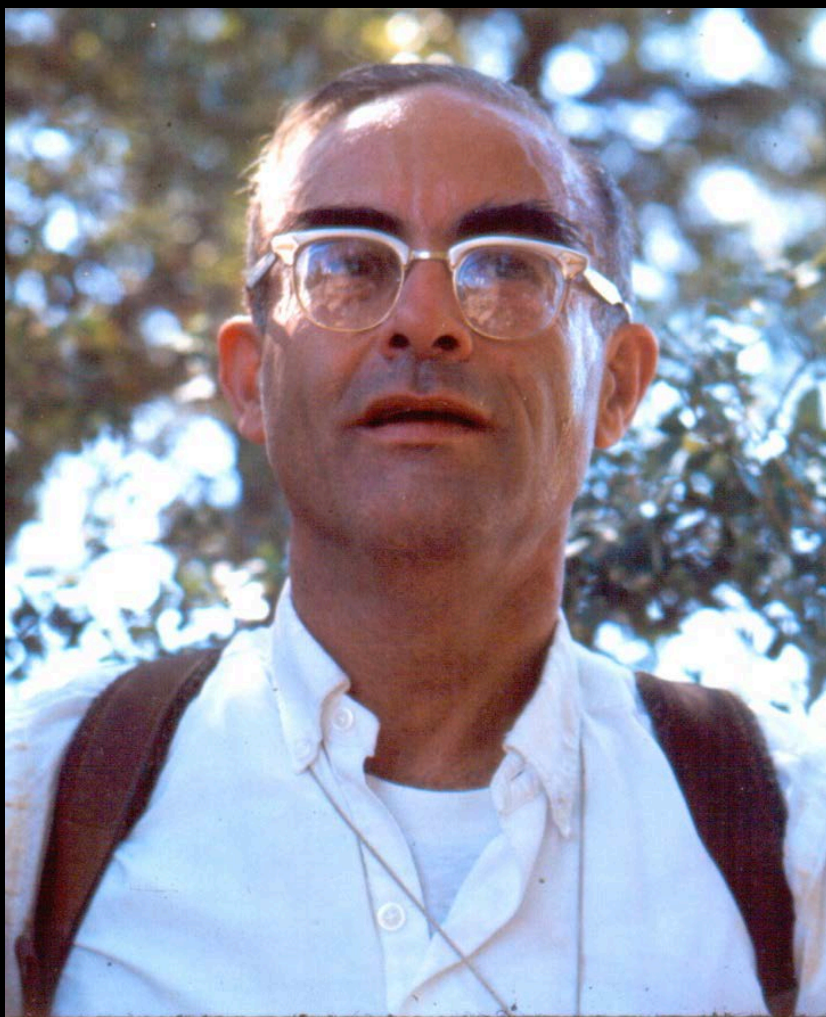
**Paiute Monument, April 22, 1978**



**Barbara Magnuson**

**Paiute Monument, April 22, 1978**

**SPS PERSONALITIES**



**Dick Akawie**

**Lightner Peak, May 12, 1973**



**Norm Rohn**

**Grayling Lake, June 30, 1979**

## SPS PERSONALITIES



**Linda McDermott**

**Mt. Rubidoux, March 27, 1976**



**Cuno Ranschau**

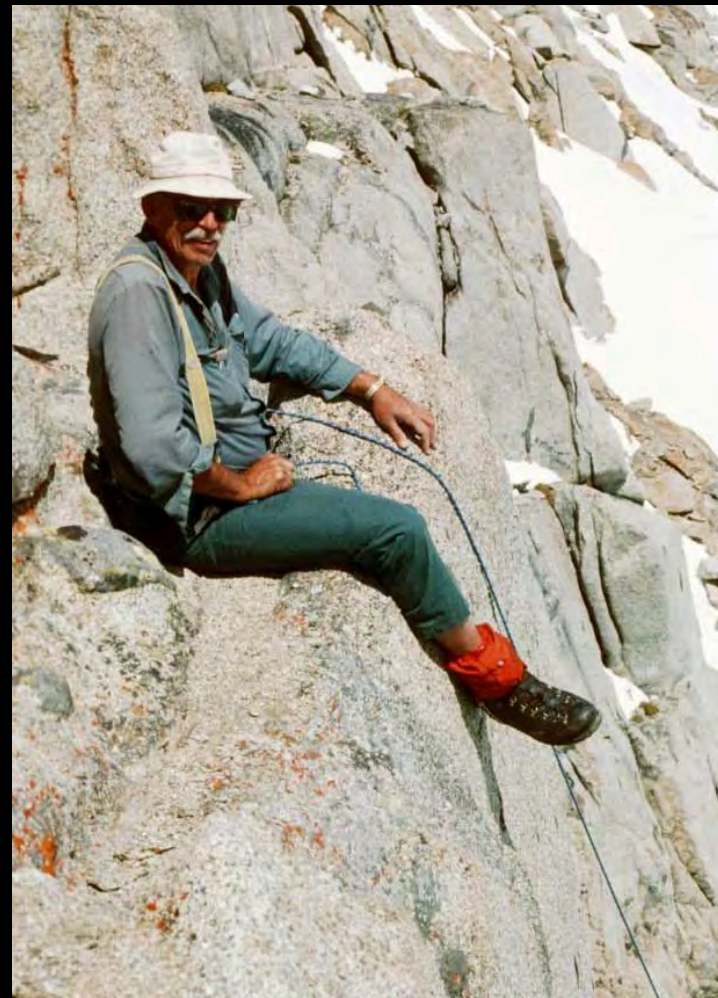
**Coyote/Angora Trailhead, 6/27/79**

**SPS PERSONALITIES**



**Andy Smatko**

**Paiute Monument, April 22, 1978**



**Roy Ward**

**Thompson-Powell Saddle, 6/12/77**

## **SPS PERSONALITIES**



**Jack Grams (left) and Ron Bartell**

**Jack's First List Completion, on Devils Crag, July 26, 1981**

## **SPS PERSONALITIES**



**How Bailey (left) and Larry Machleder  
DPS Whipple Mtn Trailhead, Feb. 4, 1978**

## SPS PERSONALITIES



Honorary SPS Member Glen Dawson and Bill Oliver



## SPS PERSONALITIES



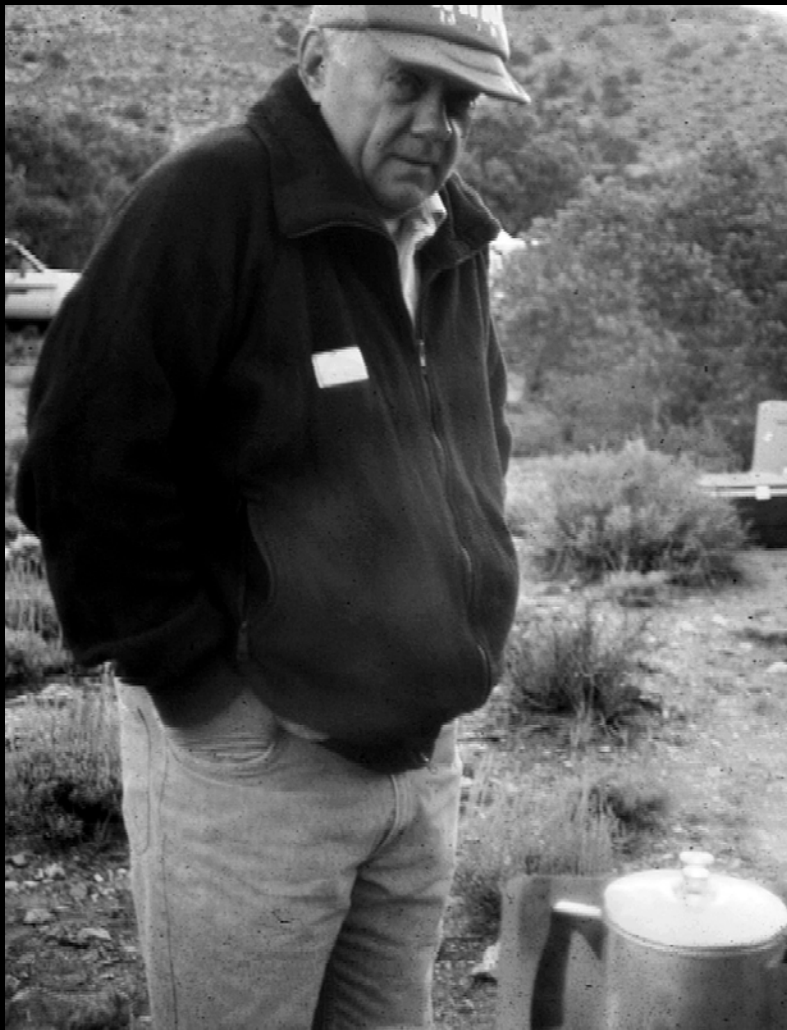
Dale Van Dalsam With Mt. Whitney in Background

## SPS PERSONALITIES



Asher Waxman (left) and Dan Richter

**SPS PERSONALITIES**



**Gene Olsen**  
**Panamint Mtns, 1985**



**Jon Inskeep**  
**Virgin Peak, no date**

## SPS PERSONALITIES



**Ron Jones**

**Mt. Dubois, April 25, 1985**



**Joyce & Randy Bernard**

**In the Sierra**

## SPS PERSONALITIES



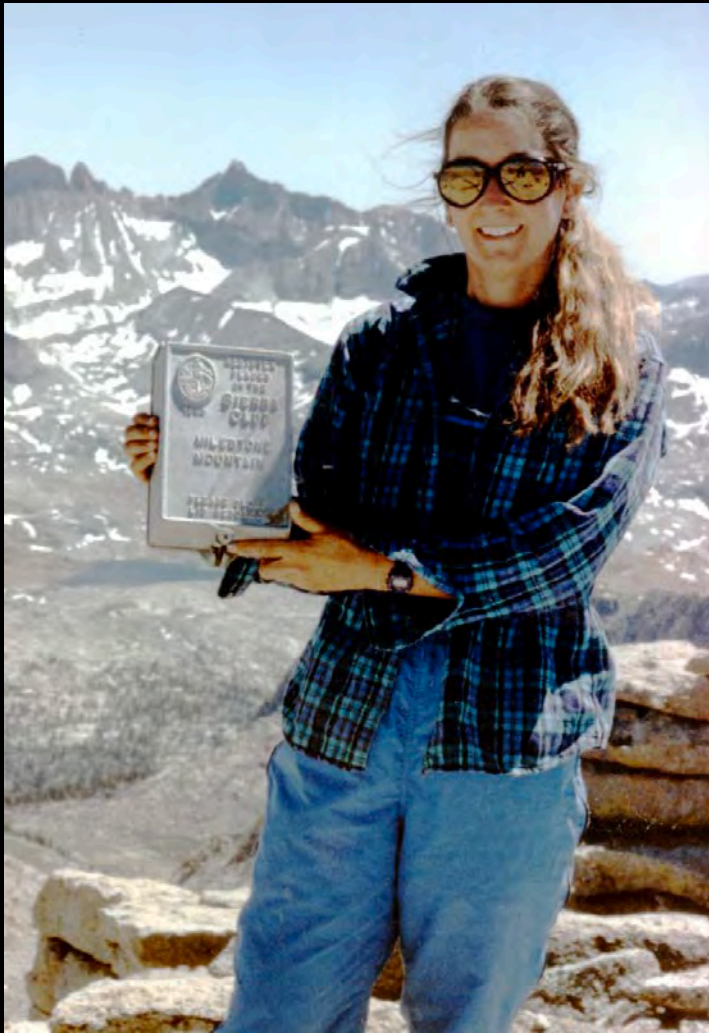
Group of SPS'ers on Ixtacihuatle in Mexico, 1970s

Joyce & Randy Bernard in Doorway

Standing, L to R: Paul Kluth, George Hubbard, Paul Lipsohn, Unidentified Man, Horace Ory

Kneeling, L to R: Unidentified Man, Bob Hicks

## SPS PERSONALITIES



**Patty Kline**

**Milestone Mtn, July 17, 1991**



**Bob Michael**

**Little Picacho Pk, 1970s**

## SPS PERSONALITIES



Robert Dubeau, Randy Bernard, Julie Rush

## SPS PERSONALITIES



Tina & Tom Bowman

Weavers Needle, March 19, 1994



## SPS PERSONALITIES



**Doug Mantle**  
**Signal Peak, Feb. 24, 2001**



**Doug Mantle**  
**Feb. 28, 1998**

**SPS PERSONALITIES**



**Sid "San Jac" Davis**

**South Guardian Angel, Oct. 11, 1975**



**Paul Lipsohn**

**Chaired SPS, DPS and HPS**

**SPS PERSONALITIES**



**Henry Heusinkveld**

**Summit of El Picacho del Diablo, 1971**

## SPS PERSONALITIES



Les Stocton

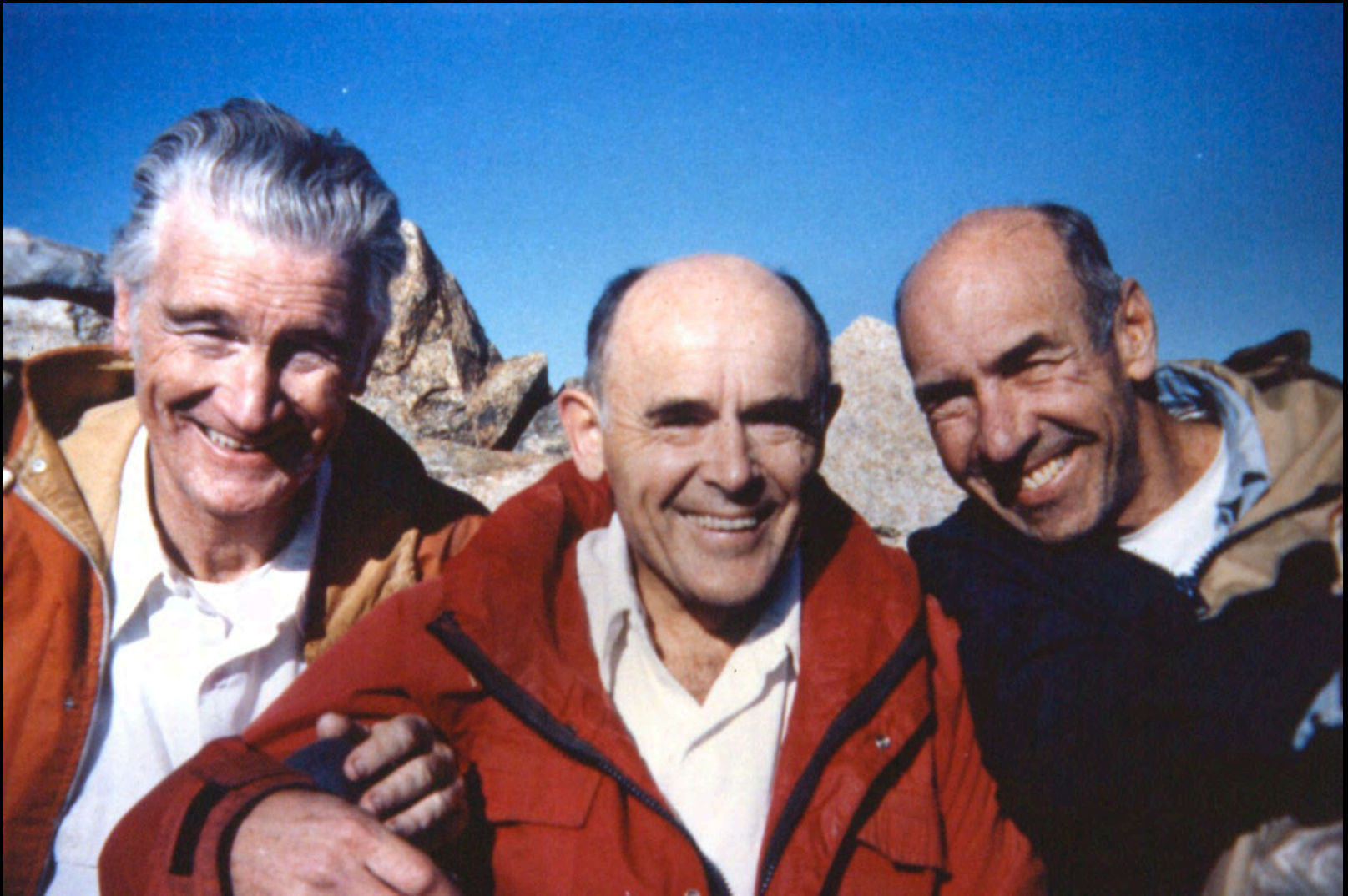
The Red Baron

## SPS PERSONALITIES



George Toby (left) and Ron Young

**SPS PERSONALITIES**



**L to R: Duane McRuer, Bill T. Russell, Bob Hicks  
Somewhere in the Sierra Nevada in the 1980s**

## SPS PERSONALITIES



**Six SPS'ers Who Are Triple List Finishers atop Schaub Peak in Death Valley, 10/29/78**

**L to R: Roy Magnuson, Gordon MacLeod, Barbara Lilley, Barbara Magnuson, Andy Smatko, Jerry Keating**

**PHOTOS DRAWN FROM THE FOLLOWING  
COLLECTIONS IN THE ANGELES CHAPTER ARCHIVES**

**Tom Amneus**

**Lloyd & Rosie Balsam**

**Ron Bartell**

**Wynne Benti**

**Randy Bernard**

**Frank Bressel**

**Tina Bowman**

**Bob & Maureen Cates**

**D.D. Chalmers**

**Edgar Cook**

**Glen Dawson**

**Lance Dixon**

**Ken Ferrell**

**R.S. "Sam" Fink**

**Chuck Gerckens**

**Pat Meixner Gentry**

**Henry Heusinkveld**

**Tom & Trudy Hunt**

**Eric & Elsie Kent**

**Alice Knapp**

**Linda McDermott**

**Mary Eide Miller**

**John Nienhuis**

**Donna O' Shaughnessy**

**Michael Rettie**

**John W. Robinson III**

**Frank Sanborn**

**George Schochat**

**Les Stockton**

**H.R. "Bob" Sturdevant**

**Debra Wasserman**

**Louise Werner**

**Dick & Lucy Woodward**

**Dick Worsfold**



**A PHOTOGRAPHIC HISTORY OF THE  
SIERRA PEAKS SECTION  
1955-2015**



**THE END**