



The Sierra Echo

Volume 63 ▲ Number 3 ▲ July-September 2019



Bear Creek Spire

Rock Creek Area Peaks in a Day, Page 8

(Photo by Tina Bowman)

Echoes from the Chair By Jim S. Fleming

Hello, fellow Sierra Nevada enthusiasts! Welcome to spring and, I hope, the beginning of a great climbing year in the wonderful Range of Light! With all of the wet weather that we have been having, it will be a challenge to gain access to some of the higher



peaks in the mountains—but maybe an opportunity for us to explore some of the lower peaks and areas that are less frequently visited! It may be a great opportunity for those of us who have already achieved the status of List Finisher to check out peaks that qualify for the Andy Smatko Explorer Emblem or for others to work on the geographic emblem. Or, maybe that snow climb that you've always wanted to do but were unable to because of a lack of snow. At any rate, the mountains beckon, and we must answer the call! If you are a leader, and haven't put together a trip for the year, now would

be a great time to consider planning something to help fill out our schedule. As I've said before, trips (and by extension, our great leaders) are the backbone of SPS and our very reason for existence.

On another subject, it's never too early to start planning for our annual banquet, which will be held on Sunday, January 26, 2020. If you have a great idea for a speaker and program, our banquet chair Paul Garry would love to hear from you! We are always interested in what our members think would be an informative, entertaining program. Let us know! And, be safe in the mountains—hope to see you there!

—Jim Fleming, chair@sierrapeaks.org

Call for Nominations

It's that time of year when we're looking for members to run for the SPS management committee. Are you interested? Know someone who might be willing to serve? Please contact Mary McMannes, chair of the nominating committee, to make suggestions. Her email is marymuir@earthlink.net

Save The Date! The 2020 SPS Banquet will be held Sunday, January 26, at Almansor Court in Alhambra.

In this issue:

Chair's Column	2
Member News	3
Around the Web	4
Ross Bequest	5
Trail Tech: Peakfinder Apps	6-7
Rock Creek Dayhikes	8-10
Outings	11-19
SPS Treasurer's Report	15
Wilderness Permits	18
Minutes	19-20
Review: Treasury of The Sierra Nevada	21-22
Passages: Rayne Motheral	23-24
Passages: Mary Sue Miller	25
Mystery Peak Challenge	26-27

2018 Sierra Peaks Section Management Committee



Elected

Jim Fleming	Chair chair@sierrapeaks.org
Paul Garry	Vice-chair/banquet vicechair@sierrapeaks.org
Alexander Smirnoff	Treasurer treasurer@sierrapeaks.org
Laura Newman	Fifth officer/outreach outreach@sierrapeaks.org
Tina Bowman	Secretary tina@bowmanchange.com

Appointed

Archives	Dan Richter dan@danrichter.com
Conservation Chair	Sharon Moore justslm@earthlink.net
Echo editors	Tina Bowman tina@bowmanchange.com , Beth Epstein
Echo mailer	Tina Bowman
Emblem Committee	Tina Bowman, Kathy Rich, Daryn Dodge, Ron Bartell
IT Support	Greg Mason admin@sierrapeaks.org , Matt Hengst matthew.hengst@gmail.com
Keeper of the List	Tina Bowman
Merchandise	Patty Kline patriciakline@aol.com
Mountain Records	Harry Langenbacher register@langenbacher.org
Outings	Phil Bates philipabates@gmail.com
Safety Chair	Doug Mantle
Webmaster	Joe Wankum jbwankum@aol.com
Asst. Webmaster	Harry Lagenbacher register@summitregister.org

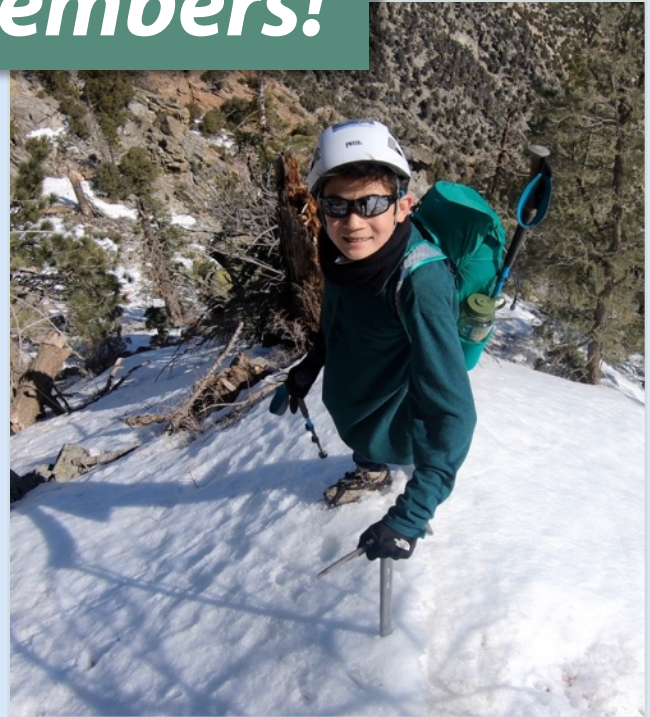
Regional Representatives

San Diego	Joe White	Northern California	Lisa Barboza
Central California	Daryn Dodge		

Welcome new members!

Donovan Pair

Donovan, seen at right on Spanish Needle, has been hiking and climbing with his dad since he can remember. So happy to have started venturing into the higher peaks of the Sierra. After signing his first register on Smith Mountain, he was hooked. When not in the Sierra, he's peak bagging with his dad around Southern California, climbing indoors (he's on the climbing team at Boulderdash in Chatsworth, CA), drawing and, of course, playing video games (oops, he means doing homework!). One of his goals in life is to climb as many Sierra peaks as he can. (*Donovan appeared earlier on the cover of the January-March 2018 Echo: <https://www.sierraclub.org/sites/www.sierraclub.org/files/sce/sierra-peaks-section/Newsletters/>*)



We also welcome new member Garret McLean and welcome back reinstated member Michael Gosnell, seen below.



Congratulations!

Signe Swenson

Member Signe Swenson earned her Andy Smatko Explorer Emblem on Parson's Peak on August, 15, 2000, and earned her Geographic Emblem on Kern Point on August 29, 2016. Congrats!



FREE First Year's Membership or *Echo* Subscription

New subscribers and members can receive their first year's subscription for free! See the Membership Application Form available for downloading on the Membership page at <http://sierraclub.org/angeles/sierra-peaks/new-members#mr>. Please contact the chair if you have any questions.

Around the Web *By Dave Sholle*

Editors' note: We're pleased to have a new feature in the Echo, suggested by Dave Sholle, who will be our correspondent for the column. It'll be a list of links to the Web that SPS members may find interesting with a brief description for each item. If you see something you think would interest other members, please send it to Dave Sholle at dsholle@verizon.net.

Tanzania is considering a cable car for Mount Kilimanjaro, which would likely be a disaster for the guides and porters on the mountain and would completely change the experience of climbing the mountain. <https://www.reuters.com/article/us-tanzania-tourism/tanzania-plans-cable-car-for-mount-kilimanjaro-idUSKCN1SD1OB>

Amazon Prime Video has numerous major and minor movies about climbing, mountains, and mountain culture, more so than Netflix. One example is *Snow to Sand*, which is about two people who did the PCT from North to South in the winter. There are many beautiful shots of the High Sierra in the movie. <https://www.amazon.com/Snow-Sand-Shawn-Forry/dp/B07PNKKMPS>

Jess Roskelley, David Lama, and Hansjörg Auer died in an avalanche on Howse Peak in the Canadian Rockies in April of 2019. The article <https://www.climbing.com/news/tragedy-on-howse-peak-david-lama-jess-roskelley-and-hansjorg-auer-presumed-dead-in-avalanche/> has more information, including links to other climbs these talented climbers had done. Jess Roskelley had written an article about an earlier climb on Mount Huntington in Alaska. <https://rockandice.com/features/the-fine-line/>. A thoughtful take on the tragedy was in the *New*

York Times <https://www.nytimes.com/2019/04/27/opinion/mountain-climbing.html?smid=nytcore-ios-share>

Although not specifically about mountains or climbing, a recent story about youth sports can be found in the *NYT*, and its conclusions have some relevance for developing future generations of active outdoor people. The article explores what may be a better way to get youth involved in sports and athletic activities, compared to what is typically done in the USA, asking, "How did the United States become the world's sports superpower while producing such a physically inactive population?" <https://www.nytimes.com/2019/04/28/sports/norway-youth-sports-model.html>

A short story in *The Sheet* about an early April 2019 rescue on Mt. Russell (see page 16). http://thesheetnews.com/wp-content/uploads/2019/04/The-Sheet_04.13.19.pdf

Late last spring Barbara and I were celebrating our Anniversary with a dinner at the gourmet restaurant at Tamarack Lodge at Twin Lakes in the Mammoth Lakes Basin. At the time the surroundings had a variety of temporary changes as a Netflix sci-fi film was shooting some scenes in the area involving children at a summer camp. The movie is *Rim of the World*, which should be on Netflix by the time you read this (supposed to be released May 24). If you have spent any time in the Mammoth Lakes Basin, you will recognize some of the buildings and mountain scenes in the movie. A link to the trailer is at <https://io9.gizmodo.com/netflix-rim-of-the-world-looks-like-attack-the-block-a-1834556230>

We Need Your Stories!

We need YOU to submit reports of SPS and private climbs, Trail Tech articles, Mystery Peak challenges, and anything else you think would be of interest to *Echo* readers! Please send submissions to co-editor Tina Bowman at tina@bowmanchange.com.

Thanks!

Wear 'em! Give 'em!

SPS TEES



Front: NORTH PAL
Back: FULL SPS LIST

By geographic area with Mountaineer & Emblem peaks highlighted

M, L & XL in Ash & Sand; M in Yellow

\$16 plus \$3.50 shipping

(\$4 shipping when ordering 2 or more shirts). Send your order to:

Patty Kline, 20362 Callon Drive

Topanga, CA 90290

Make check payable to SPS

CST 2087766-40

A Wonderful Bequest

By Tina Bowman

The Sierra Peaks Section was remembered most generously in the will of Tom Ross with a bequest of his photographic prints, negatives, transparencies, and some miscellaneous materials. Numbering in the hundreds, maybe thousands, the black-and-white prints are large format photos primarily of the Sierra and other ranges. We also received slides taken by Andy Smatko, which were in Tom's possession. Everything is currently in storage until archivist Dan Richter returns from his travels to Russia and various "stan" countries and his summer on Cape Cod. Eventually, the collection will be in the SPS archives at UCLA. Just tiny sample of the many images in the collection are reproduced here.



Top right: Mt Whitney. Bottom right: Skiers below Mt. Dade, Upper Rock Creek, Spring, 1967. (Photos by Tom Ross). Bottom left: Some of the photographic materials bequeathed by Tom Ross to the SPS (Photo by Tina Bowman).



This continues a series of brief articles contributed by SPS members who would like to share information about their favorite pieces of trail technology. For this issue Bill Oliver tells us about a piece of technical equipment that makes his life better in the mountains. How about you? Send your proposal or article to Tina Bowman at tina@bowmanchange.com

Peak Identifier Apps: PeakFinder and PeakVisor

By Bill Oliver

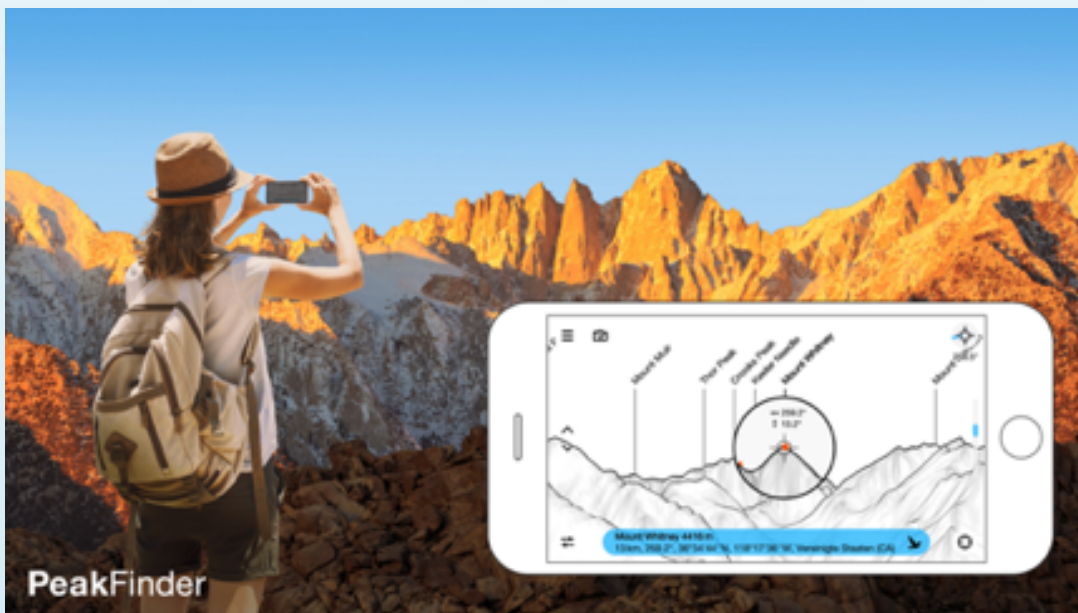
Ah, the mountaineer's persistent dilemma, so often encountered from atop a hard-won summit – “what's the name of that distant peak?” Let's consider the options. (1) If you're sharing the summit with someone like Doug Mantle or Tina Bowman, just ask him or her. (2) If you're a *Wilderness Travel Course* grad, you can pull out a large map and shoot bearings with your compass. (3) If all else fails then just whip out your smartphone and pull up the appropriate app to find the peak's name, elevation, and distance. Who would have guessed!

PeakFinder has been the go-to app for about six years, and I imagine many of our readers are familiar with it. I just discovered that PeakVisor is the latest entry in the field and a worthy challenger. You can't lose either way, and for just a few bucks why not get both [<https://peakvisor.com> - \$5.99; <https://www.peakfinder.org/mobile/> - \$4.99]? They also have informative *Facebook* pages that include videos.

Both apps offer iOS and Android platforms, though I've only used the iPhone version. With a wifi connection they will automatically download the local data set for your location. Before you head out into the wilderness, however,

you want to download the dataset for your target location. You can then work in “airplane mode,” utilizing your phone's GPS capabilities (similar to the *Gaia GPS* app covered in a recent *TrailTech*). Within PeakVisor's menu, under Map Coverage enter “Sierra Nevada” for downloading that specific region; enter “Los Angeles” for coastal ranges; “southwest” for SW basins & ranges, etc. Within its menu under “Teleport” type a mountain's name to be transported to the summit with a 360° panorama – right from your armchair. PeakFinder has a similar feature.

The apps are continually updated with peaks and often with more features. Originally developed for the Swiss Alps, PeakFinder currently hosts over 650,000 named peaks worldwide, while PeakVisor is at “a little over 1 million.” [I imagine the inclusion of lunar peaks can't be far away.] If your favorite mountain is somehow missing, perhaps Smatko Peak, contact the developers to have it added. A terrific feature is that both apps use Augmented Reality (AR) with the phone's camera to align the skyline peak outline with the scene – and indeed allowing you to manually shift the outline for an exact fit. There's an arc



Once you've tapped the Mt. Whitney summit on the screen image, the circle shows compass bearing and vertical angle from current position to summit. One can switch from meters to feet.

TrailTech, continued

showing the sun's path, and there are also 3D view options.

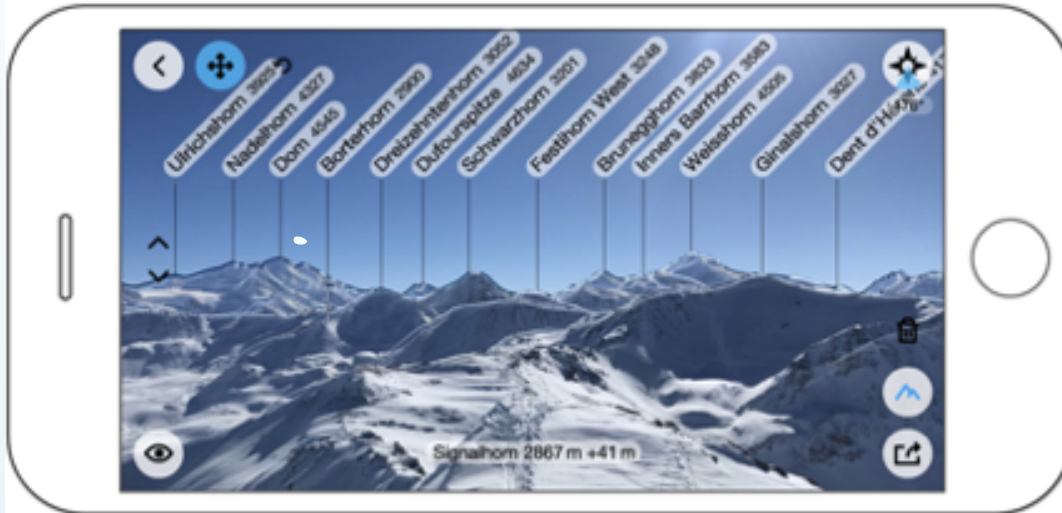
I think PeakFinder is a little easier to work with at first, but PeakVisor may be a little more precise and has more features, e.g., perhaps showing trails, naming some castles and huts, and offering a Winter Mode showing ski lifts. Both apps claim that you can import a photo from a prior adventure, assuming geolocation data is embedded, and

have the peaks identified. So far I have found this feature disappointing.

I live in Colorado, and so I don't have any Sierra Nevada examples. I'm hoping our readers will provide feedback and photos on their experiences with these apps in our beloved high Sierra and desert ranges. I would not claim to have yet mastered these apps. After downloading, one needs to invest time exploring the various tutorials

and Info/Help within their menus.

And if all else still fails and you can't seem to identify that distant peak, just get over it already. One can be content simply to exalt in the amazing and majestic scene spread out in every direction—and may you have a safe descent and feel blessed by your intrepid journey.



Above: Bill Oliver provided the PeakFinder view from the summit of Signalhorn in the Swiss Alps. As he hoped, one of our California members, Homer Tom, provided the Sierra Nevada PeakFinder image at right, taken by Jen Harmon from Pioneer Basin.



Some Notes about SPS Peaks in a Day

Rock Creek Area

By Tina Bowman

Seven SPS peaks can be climbed as day hikes from the Rock Creek area: Bear Creek Spire, Dade, Abbot, Mills, Morgan (S), Stanford (N), and Morgan (N).

How do I get there?

From highway 395 north of Bishop or south of Mammoth, turn south onto Rock Creek Road at Tom's Place. The end of the road at Mosquito Flat is 10.6 miles from the highway. You can climb all but Stanford (N) and Morgan (N) from here. You may also climb Morgan (S) from the Tamarack Lakes trailhead by turning left after 8.8 miles to Rock Creek Lake and going another 0.3 to the trailhead parking. For Stanford (N) and Morgan (N), park at the Davis Lake trailhead 9.2 miles from 395; it's about a quarter of a mile below the pack station.

Where can I camp before my hike?

There's a free one-night limit campground at Mosquito Flats for backpackers with ten walk-in sites. From the parking area, cross the bridge just ahead

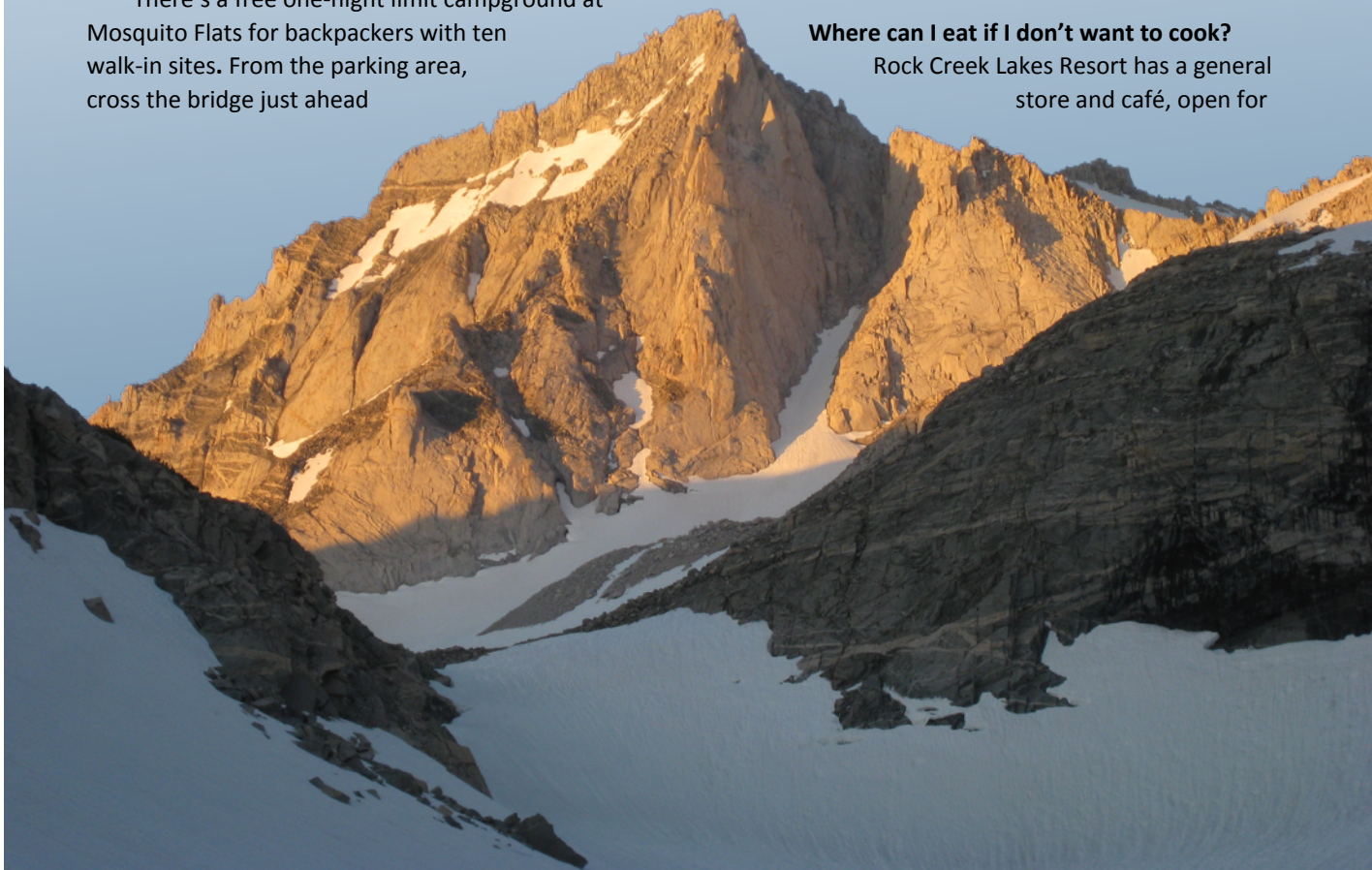
off the trail to get to the campsites. Rock Creek Lake Campground charges \$25/night and has twenty-eight spaces. Farther down the road are seven other campgrounds: Upper Pine Grove (eight sites), Pine Grove (eleven sites), East Fork (133 sites), Big Meadow (eleven sites), Iris Meadow (fourteen sites), French Camp (eighty-six sites), and Holiday (overflow campground used as needed with thirty-five sites), the last two quite close to Tom's Place. All are \$25/night. Rock Creek is a very popular area, so consider reserving your camping space, especially for weekends. More campgrounds are available at Crowley Lake and Mammoth.

What about food storage?

The trailheads and campgrounds have food storage boxes.

Where can I eat if I don't want to cook?

Rock Creek Lakes Resort has a general store and café, open for





breakfast and lunch. Tom's Place has a café, open for breakfast, lunch, and dinner; of course, Bishop and Mammoth offer many choices.

What else can I do in the area?

With lots of lakes for fishing, this is an anglers' paradise. Horses may be rented at the pack station.

Previous page: Bear Creek Spire. Above, on the far skyline horizon from left to right: Bear Creek Spire, Dade and Abbott from Mono Pass. Below, left to right: Abbott, Petit Griffon, Mills (Photos by Tina Bowman).



breakfast and lunch. Tom's Place has a café, open for breakfast, lunch, and dinner; of course, Bishop and Mammoth offer many choices.

What else can I do in the area?

With lots of lakes for fishing, this is an anglers' paradise. Horses may be rented at the pack station. You can certainly head to Mammoth and Devils Postpile (see <https://www.nps.gov/depo/index.htm>) or go rock



www.fs.usda.gov/recarea/inyo/recarea/?recid=20414).

If I want to backpack, where do I get a permit?

Top, Mt Morgan South. Left: Mt. Morgan North from Davis Lake (Photos by Tina Bowman). Bottom: Looking down the northwest ridge of Mt. Morgan South (Photo by Beth Epstein).

climbing or fishing in the Owens River Gorge (see <https://www.bishopvisitor.com/owens-river-gorge/>). Hot Creek near the Mammoth airport is a great place to soak after your hike if you are there before sunset (see <https://>





Outings

Ascending Mt. Emerson on August 27, 2017 (Photo by Mat Kelliher).

We've chosen the photo above showing climbers ascending Mt. Emerson on an SPS trip to represent the outings section. Do you have a photo you would like to see here? If so, please send your submission as an email attachment to tina@bowmanchange.com or via USPS to Tina Bowman.

Jun 22-23 | Sat-Sun

WTC, SPS

I: Johnson Pk (11,371'): Join us for a two-day meadow filled extravaganza in the Southern Sierra! We'll start out at a 10k trailhead so arrive early the day before for bonus altitude/attitude adjustment potential! Sat we'll cross the 11k Cottonwood Pass and drop down into a series of massive meadows with views of the Whitney area to the north. (11 mi, 2,000' gain). Camp will be in a meadow near the peak. Sun we'll be up early and do a x-c route to Johnson (4 mi, 1,50'0 RT) before returning to camp, packing up, and hiking out (11 mi, 2,000'). Priority given to WTC students who need an

experience trip to graduate. Please email ldr with recent hiking experience to apply. Ldr: Matthew Hengst. Asst: Jennifer Blackie.

Jun 22-23 | Sat-Sun

WTC, SPS

I: N Maggie Mtn (10,234'): Even if Maggie Lk and Maggie Mtn were not the inspiration for Rod Stewart's classic hit, this may be the trip for you! Join us on this early season trip from a southern Sierra trailhead to climb SPS peak N. Maggie Mtn (10,234'). We'll have a longish but beautiful approach on Sat (10 mi/3000' gain) to camp by a lake. Sun we'll head out early for N. Maggie Mtn (2.4 mi rt/1200' gain) before returning to camp to pack our things and hike out. This trip offers great west side hiking and the chance to get conditioning with decent elevation before the snowy Sierra opens up in all its glory. For consideration, send your recent hiking experience and contact information to Ldr: Jennifer Jones. Asst: Kristen Lindbergh.

SPS outings can always be viewed online on the electronic Angeles Chapter Schedule of Activities:

<http://angeles.sierraclub.org/activities>
<https://sierraclub.org/angeles/sierra-peaks/outings-schedule>

OUTINGS

Leaders in this issue's schedule:

Jennifer Blackie blackiejennifer@gmail.com
Richard Boardman 310-74-4371
Tiffani Bruno 909-783-7697 mtntris@gmail.com
Reggie Bulman r_bulman@fastmail.us
Ron Campbell campbellr@verizon.net
Todd Clark 714-803-0196 clarkta@hotmail.com
Sylvie Cote 949-547-2998 misylvie@hotmail.com
Kim Crane cranesnest@me.com
Diane Dunbar 818-248-0455 dianedunbar@charter.net
Richard Gillock r.r.gillock@ieee.org
Sridhar Gullapalli 310-821-3900 sridhar_gullapalli@yahoo.com
Matthew Hengst matthew.hengst@gmail.com
Jennifer Jones jones.jennylee@gmail.com
Mat Kelliher 818-667-2490 mkelliher746@gmail.com
Kristen Lindbergh kmlindbergh@gmail.com
Dennis Loya dennisloya@gmail.com
Stephen McDonnell 626-354-9638 mcdonnell0123@sbcglobal.net
Patrick McKusky 626-794-7321 pamckusky@att.net
Robert Myers 310-829-3177 rmmyers@ix.netcom.com
Jeremy Netka 818-703-8607 jnetka@gmaiul.com
William Payne leakycanoe@yahoo.com
Jummy Quan 626-688-6283 h2otigerjim@gmail.com
Dan Richter 818-970-6737 dan@danrichter.com
Dave Scobie 323-662-3538 davescobie@gmail.com
Ann Shields 818-637-2542 apedreschi@sbcglobal.net
Sherri Sisson 949-786-7681 skisson@gmail.com
Donna Specht 714-963-6345 donnaspecht@juno.com
Monica Suua mosuua@gmail.com

Jul 4-7 | Thu-Sun

SPS

MR: Bear Claw Spire, Peppermint Pk: Join us for an adventure to climb two rarely climbed peaks in the Pine Crk drainage. Thu, backpack from Pine Crk trailhead to camp at Upper Pine Lk (5 mi, 3,000' gain). Fri, climb Bear Claw Spire (aka, Treasure Pk) via the third-class Southwest Ridge (2.5 mi, 2400' gain). Sat morning, we'll attempt Peppermint Pk via Spire Col and the West Ridge (3 mi, 2400' gain). Total stats for trip: 21 mi and 7800' gain. Must be comfortable on exposed 3rd class rock and have previous experience at altitude. Trip restricted to Sierra Club members—helmet and

harness required. Permit limits group size. Send email with experience and conditioning to Ldr: Regge Bulman. Co-Ldr: Monica Suua.

Jul 12-14 | Fri-Sun

WTC, SPS

MR: Twin Pks (12,323'), Virginia Pk (12,001'): Join us for a moderately strenuous early summer loop-trip out into northeastern Yosemite NP for a fun and rocky ridge traverse to these two gorgeous peaks in the Sierra Nevada near Bridgeport, CA. Fri morning we'll start out from Virginia Lks (9852') and pack in on trail into the Yosemite Wilderness and set up camp alongside a gorgeous alpine lake at 10,250' (8.2 mi, 2600' gain). Sat morning we'll rise at first light to ascend a steep and sometimes loose class 2 gully to the sometimes class 3 ridge that connects Twin Pks and Virginia Pk; once atop that ridge we'll make our way to the north to the summit of Twin Pks, then retrace our steps for a bit to travel south along the ridge on our way to the summit of Virginia Pk, before making our way back to camp (4.5 mi, 3000'). Sun morning we'll pack up and head out over Virginia Pass (10,550') and then down Glines Cyn and Green Crk to the Green Lks trailhead (8120') (5.5 mi and 1100' gain/3200' loss). Festive Happy Hour Fri and Sat evenings under waxing gibbous moon-lit skies! This is a Restricted Mountaineering outing; participants must be current Sierra Club members and must submit a Sierra Club Medical Form to join us. Absolute comfort on talus and exposed class 3 terrain required. Helmet, harness, belay device, and experience with their use is required. Email Mat with contact and carpool info, recent conditioning and experience, including high-altitude experience, for trip status and details. Ldrs: Mat Kelliher, Jeremy Netka.

Visit the SPS website for an even more up-to-date listing of upcoming trips at <http://www.sierraclub.org/sp5>

Also, please check at summitregister.org whether a peak needs a register book or pencil before you go on a climb.

OUTINGS

Jul 13-14 | Sat-Sun

WTC, SPS

I: Kern Pk (11,510'): Join us for a visit to the meadows and forests of the Kern Plateau. We'll climb one of the two tallest peaks on the plateau and enjoy views stretching north to Whitney and south to the Mojave. Of course, we'll have a potluck too. We'll enter via the Blackrock Trailhead off the Sherman Pass Rd. Trip stats: Sat 8.5 mi, 1800' gain, 2000' loss. Sun summit climb 3.5 miles, 2900' gain; return trip 12 mi, 2000' gain, 4500' loss. Send recent experience and conditioning. Preference given to recent WTC students. Ldr: Ron Campbell. Asst: William Payne.

Jul 27-29 | Sat-Mon

SPS

I: Mt Davis (12,303'): Join us for this strenuous but amazingly scenic trip up into the Thousand Island Lk region of the Ansel Adams Wilderness to climb this often-overlooked peak in the Ritter Range. Sat we'll pack in 9.0 miles (4,350' gain) via the Rush Creek trailhead out of June Lk and set up camp. That night we'll enjoy a festive Happy Hour under nearly moonless night skies. Sun we'll set out at first light for the summit of Mt Davis over steep, sometimes loose, always rugged x-c terrain. We'll enjoy phenomenal views up top and then return to camp the way we came up for a day's total of about 5 mi (2,700' gain). Another festive Happy Hour that night, and then Mon morning we'll pack up and head back out the same way we came in. Satisfies WTC Experience trip requirements. Permit limits group size and permit costs (about \$10 per person) will be split among the group. Email Mat with contact and carpool info, recent conditioning and experience,

including high-altitude experience, for trip status and details. Ldrs: Mat Kelliher, Stephen McDonnell.

Aug 2-4 | Fri-Sun

WTC, SPS

I: Crown Pt (11,346'), Cirque Mtn (10,713'): Join us for three moderate days in a spectacular and underutilized area of the Sierra! We'll depart from Twin Lks north of Lee Vining and hike in the scenic Robinson Canyon (6.5 mi, 2,400') to set up camp at Robinson Lake. Optional swimming and a non-optional happy hour shall ensue. The middle day we'll do a loop climbing Crown Pt and Cirque (6 mi, 4,000') before returning to camp for more lakeside festivities! Sun we stroll out (6.5 miles, 0') early enough to (hopefully) make it home at a decent hour. Priority given to WTC students who need the trip to graduate. To apply please send recent conditioning to leaders. Ldr: Matthew Hengst. Co-ldr: Jennifer Blackie.

Aug 10-11 | Sat-Sun

WTC, SPS

I: Sawtooth Pk (N) (12,343): Join us for a mid-summer weekend in the Sequoia NP out of Mineral King to ascend this amazingly scenic peak with outstanding views in all directions. Sat morning we'll pack in on trail at a relaxed pace and set up camp at Lower Monarch Lk for a day's total of 3.4 mi with 2,800' gain. Sat night we will celebrate with a Festive Happy Hour under waxing gibbous moon-lit night skies. Sun plan to set out at first light on trail and later cross-country to the summit of Sawtooth Pk for a total of 2.2 mi and 2,400' gain. After savoring the views up top, we will return to camp, pack up, and head out. Email Mat with contact and carpool

Call for Outings

Hi, SPSers! Again, I want to iterate that this year is a banner year for snow in the Sierra. Mammoth Mountain has just broken its own record for snowfall. For those of you who love the snow and snow climbing, this year will be one of the very best to get out your crampons and ice axe to go climb some peaks. Snow climbing is a true joy in that it's an opportunity to walk on top of some of the brush and talus that you might otherwise have to work through! In fact, many peaks can be approached more efficiently on snow versus dry conditions. In my opinion, SPS is best suited to sponsor M and/or E snow provisional outings or even an I provisional outing on cross-country snow versus the standard trail. Obviously,

traveling and camping on snow bring some additional considerations. If you have an interest in any form of a snow-based outing, please reach out to any of us qualified leaders!

On another topic, Inyo wilderness permits can generally be reserved six months in advance, are going fast, and appear to have been reduced from prior years for some trailheads. Currently, it appears that most Inyo permits are being released shortly after midnight PST, although I've been told that it could revert back to 7 am PST at any time. That means you will need to plan to log-in about midnight and start reserving permits. Remember to give the outings chair(s) and the MOC time to review and approve any M or MR trips.

Cheers—Phil Bates
Outings Chair, SPS

OUTINGS

info, recent conditioning, and experience, including high-altitude experience, for trip status and details. Ldrs: Mat Kelliher, Sridhar Gullapalli.

Aug 17-18 | Sat-Sun

WTC, SPS

I: Mt Lewis (12,296') via Bloody Cyn: Join us for a quasi-relaxed stroll up a seldom visited peak that straddles the border of Yosemite! Sat we'll pack in 4 mi and 2,200' gain and spend the afternoon relaxing by a lake and enjoying a traditional Sierra Club happy hour while we watch the sunset. Sun we'll be up early and stroll up to the pass where we'll explore some old mining ruins and climb Mt Lewis before returning to camp (6 mi, 2,600') and packing out (4 mi, 600'). Email leaders your recent conditioning to apply. Priority given to Wilderness Travel Course students who need the trip to graduate. Ldrs: Matthew Hengst, William Payne.

Aug 17-18 | Sat-Sun

WTC, SPS

I: Mt Conness (12,590'): Join us for two days climbing a spectacular peak above Tuolumne Mdw in Yosemite NP. Sat we'll hike in to Young Lks (5.8 mi, 1000' gain), where we will

set up camp and spend a relaxing afternoon swimming and enjoying the area. That night we will have our epic Sierra Club happy hour, so please bring something for everyone to share. Sun, we'll wake up early and climb the peak (3 mi, 2,600'), where we'll have lunch before returning to camp and hiking out (9 mi). The total stats for the weekend are 18 mi and 3,600' of elevation gain. Email leader with recent conditioning to apply. Preference given to WTC students who need the trip to graduate. Ldrs: Dennis Loya, Richard Gillock.

Aug 23-25 | Fri-Sun

WTC, SPS

I: Pilot Knob (12,245'): Join us for this moderate three-day trip up into the gorgeous Humphreys Basin west of North Lk in the Eastern Sierra Nevada. Fri morning we'll meet near North Lk (9,345') and pack in at a relaxed, but determined pace west along creek-side trail and up past a series of gorgeous alpine lakes up to and then over Piute Pass (11,423') before dropping down into the spectacular Humphreys Basin and making our way northwest to our camp for the weekend near the shore of Lower Desolation Lk (11,100'). Expect a day's total of about 7.5 mi with 2,600'



Dare to Lead! Spring Leadership Training Seminar Set for October 5, 2019

Becoming a Sierra Club outings leader starts with curiosity and a love of the outdoors. What better way to step up and lead than by taking advantage of the training opportunities that the Angeles Chapter's Leadership Training Committee provides each year?

As home to one of the largest outings programs on the planet, the Sierra Club Angeles Chapter's many groups, sections, and committees sponsor thousands of trips ranging from beach barbecues to mountaineering expeditions. You can take the first step toward becoming a leader by attending a class offered on October 5th, in Culver City. Deadline to register is September 21.

The seminar covers all the basics of leadership. Experienced leaders will tell you how to plan a trip, prevent problems on the trail and make sure that everyone—including you—has a great time. They'll also explain good conservation and safety practices. And they'll give you tips for getting your "O" rating quickly and then, if you choose, pursuing more advanced ratings.

The all-day class costs \$25. The application is on-line at <https://www.sierraclub.org/angeles/leadership-outings/leadership-training-seminar>. At this site, <https://www.sierraclub.org/angeles/leadership-outings/angeles-chapter-leadership-training-program>, you can learn more about the Leadership Training Program and view the LTC's upcoming offerings, which are also on the Schedule of Activities page. Scholarships are available for those with financial need. Apply to LTC Chair Anne Marie Richardson AMLeadership@gmail.com

OUTINGS

gain. After setting up camp, relaxing a bit, and perhaps catching a fish or two, we'll settle in for a festive Happy Hour under the last quarter moon-lit, summer night skies. Sat we'll head off cross-country to the west and summit the wildly scenic Pilot Knob. After thoroughly enjoying the spectacular views surrounding us up there, we'll head back to our camp and enjoy an afternoon of swimming, fishing, lounging, and/or snoozing. Expect a day's total of about 3.0 mi and 1,750' gain. That evening we'll celebrate with an even more Festive Happy Hour than the night prior. Sun we'll pack up and then head out the same route we came in on. Amateur anglers need a valid CA fishing license. Permit dramatically limits group size, and permit costs will be split among the group

(about \$10 each). Email recent conditioning and experience, including high altitude experience, WTC (if any) Area & Group, along with contact and vehicle/rideshare information, to Mat for trip status and details. Ldr: Mat Kelliher, Co-Ldrs: Dave Scobie, Tiffani Bruno.

Aug 24-25 | Sat-Sun

WTC, SPS

I: Duck Lk Pk (12,077'), Pika Lk: Join us for two glorious days out near Mammoth! Day 1 we'll drop cars off at Lk George then hike in from Lk Mary crossing Duck Pass and camping at Pika Lk (5.3 mi, 2,000'). Sun we'll be up early and climb nearby Duck Lk Pk before hiking out over Mammoth Crest where we'll have incredible views in pretty much every

SPS Income Statement 05-19-2019

	YTD	YTD	YTD	YTD	YTD	Final	Final	Final	Final	Final	Final	YTD
	2019	2020	2021	2022	2023	2012	2013	2014	2015	2016	2017	2018
INCOME												
Echo Subscriptions	1,650	830	470	230	140	1,835	1,360	1,560	1,560	1,630	1,580	1,710
Banquet Income	3,165	-	-	-	-	2,800	2,905	4,645	4,110	3,760	2,795	2,650
Donations	886	301	75	30	30	340	440	560	666	888	655	798
Merchandise Sales	63	-	-	-	-	39	27	276	395	262	112	157
	-	-	-	-	-	-	-	-	-	-	-	-
Total Income	5,764	1,131	545	260	170	5,014	4,732	7,041	6,731	6,540	5,142	5,315
EXPENSES												
Postage	165	-	-	-	-	609	(4)	14	938	522	314	292
Printing	187	-	-	-	-	578	898	640	706	433	418	315
Merchandise	21	-	-	-	-	-	-	196	234	130	-	17
Raffle	-	-	-	-	-	-	-	250	-	-	-	-
Banquet Expenses	4,252	-	-	-	-	3,216	4,206	5,640	4,772	4,710	3,553	3,715
Bank Fees	1	-	-	-	-	18	2	10	6	18	12	(84)
Website	-	-	-	-	-	-	-	268	36	84	96	20
Charitable contributions	-	-	-	-	-	400	-	-	200	200	200	200
Outreach	-	-	-	-	-	-	-	-	899	254	82	-
Membership meetings/activities	-	-	-	-	-	-	-	-	1,257	174	-	101
Register Related	-	-	-	-	-	-	-	-	-	57	-	-
	-	-	-	-	-	-	-	-	-	-	-	-
Total Expenses	4,627	-	-	-	-	4,821	5,103	7,019	9,048	6,583	4,674	4,577
OVERALL TOTAL	1,137	1,131	545	260	170	193	(371)	22	(2,317)	(43)	467	738
Cash In Bank	10,629											

OUTINGS

direction (11 mi and 3k gain for the day). Priority given to WTC students who need the trip to graduate and those with a really awesome happy hour item! Ldr: Kim Crane. Asst: Matthew Hengst.

Sep 7 | Sat

LTC, OC Sierrans

O: Leader Training day and Hike: Leadership Training candidates come and join experienced leaders on this easy pace 4-5 mi, 500' gain hike in the hills of Irvine. Prior to the hike, we will have an introduction about Angeles Chapter Leadership Training. When the hike begins, we'll discuss trailhead talk, group management issues, Leave No Trace, safety, ten essentials, etc. There will be plenty of opportunities to ask questions. After the hike, more Q and A: How to pick your provisional hike, assistant leader, participants. If you have already attended Leadership Training and just don't know how to complete the requirements, come join us, we can help. You can also sign up for the October 5 Leadership Training Seminar at this event. Deadline for Leadership Training Seminar registration is September 21. Meet 10 am at Turtle Rock Community Park picnic tables, not at the Tennis Courts. Directions: 405 Fwy, exit S at University/Jeffrey, L on Ridgeline, L on Turtle Rock, pass Sunnyhill, L into parking lot of Turtle Rock Community Park. Bring snacks or lunch, hiking boots, water, hat for the hike. Ldrs: Todd Clark, Sylvie Cote, Dennis Loya, Donna Specht, Sherri Sisson.

Sep 7-8 | Sat-Sun

WTC, SPS

I: Mt Ian Campbell (10,616'): Join us for a moderately paced, relaxing weekend to scenic Mt Ian Campbell in the western Sierra! We'll have a late-ish start from Florence Lk and hike up the Dutch Lk trail to set up camp at Crater Lk (3.5 mi/+2000' gain), where we'll have the opportunity to fish, nap, or swim in the lake. That night we'll (hopefully!) have a campfire and enjoy a traditional WTC potluck. Sun we'll be up early for a short cross-country hike to Mt Ian Campbell (1.3 mi/1250' gain), which offers memorable views of the John Muir Wilderness and Kings Canyon high Sierra toward Mammoth Lks and beyond and even Yosemite and the Ritter Range to the north. We'll then return to camp, pack our things, and hike out to our cars and post trip Mexican food at one of the hidden gems of the western Sierra. Ldrs: Matthew Hengst, Jennifer Blackie.

Sep 14-15 | Sat-Sun

WTC, SPS

I: Vogelsang Pk (11,493'): Join us for a couple of pleasant days in wildy scenic Yosemite NP on this overnight trip to climb a

classic Sierra Peak in the Cathedral Range. Sat we pack in out of Tuolumne Mdws at a relaxed, but purposeful pace on trail alongside Rafferty Crk up and over Tuolumne Pass and beyond. Once we reach Vogelsang Lk, we will travel cross-country around its western shore and set up camp near its headwaters to the south. Distance for the day will be about 8.0 mi with 1,900' gain. At camp that night we will celebrate the gorgeous country we find ourselves in with a Festive Happy Hour under full moon-lit, summer-night skies. Sun we continue our southern course cross-country up to and then along the Eastern Ridge of Vogelsang Pk to its summit, where we will savor the expansive views all around us before heading back down to our camp for a total of 2.0 RT mi with 1,200' gain. Back at camp, we will pack up and head out the same way we came in. Satisfies WTC Experience trip requirements. Permit limits group size and permit costs (about \$10 per person) will be split among the group. Email Mat with contact and carpool info, recent conditioning and experience, including high-altitude experience, for trip status and details. Leaders: Mat Kelliher, Jimmy Quan.

Sep 22 | Sat

LTP

Deadline to Register for Leadership Training Program

Seminar: For more information and seminar application, see <https://www.sierraclub.org/angeles/leadership-outings/leadership-training-seminar>

Sep 28-29 | Sat-Sun

WTC, SPS

I: Gabbro Pk (11,033'): Have you already had a full season and just want one more relaxing weekend at altitude? Or are you down to the wire and need one last experience trip to graduate WTC? Well, join us for a spectacular stroll to a seldom visited peak in the Hoover Wilderness! Sat we'll stroll in to camp at Green Lk (2.5 mi, 1100' gain) where we'll set up camp and enjoy our views of nearby Gabbro Pk. Sun we'll wake up early and climb the peak before packing out and driving home (5 mi 2,200'). Priority given to WTC students who need the trip to graduate. Send recent conditioning to leaders to apply. Ldr: Dennis Loya. Co-Ildr: Matthew Hengst.

Sep 29 | Sun

LTC, WTC, HPS, DPS, SPS

I: Navigation: Mt. Pinos Navigation Noodle: Navigation noodle at Mt. Pinos to satisfy the basic (I/M) level navigation requirements. Practice skills or checkoff. Send email with contact info (mailing address, phone numbers), navigation experience/training, any WTC, leader rating, rideshare to Leader: Robert Myers. Assistant: Ann Shields. Note: Early (at

OUTINGS

least two weeks prior to the event) sign-up for all navigation checkoffs and practices is recommended. These outings require substantial pre-outing preparation work, including completion of both a comprehensive written exam and a route planning assignment that will be mailed to you prior to the checkoff. See Chapter 6 of the *Leaders Reference Book* for more information.

Oct 5 | Sat **LTC**
Leadership Training LTP Seminar: Get more information here: <https://act.sierraclub.org/events/details?formcampaignid=7010Z000001aH6MQAU&mapLinkHref=https://maps.google.com/maps&daddr=LEADERSHIP%20TRAINING%20LTP%20Seminar@34.014117,-118.377285>.

Oct 9 | Wed **LTC SPS, DPS, WTC**
M/E-R: Advanced Mountaineering Program (Fall 2019): Knots and Basic Safety Systems: First of four climbing workshops aimed at developing skills for 3rd, 4th, and 5th class climbing both as a participant or a future Sierra Club M and E leader. This will be an indoor workshop held in the evening, reviewing ropes, harnesses, helmets, basic climbing gear, and knots in preparation for later workshops. All participants must have prior roped climbing experience and commit to all four classes. To register please see <http://www.advancedmountaineeringprogram.org> Registration opens at 8 am the Monday two weeks after the final previous class outing.
Ldr: Matthew Hengst. Assts: Dan Richter, Patrick McKusky.

Oct 12 | Sat **LTC, SPS, DPS, WTC**
M/E-R: Advanced Mountaineering Program (Fall 2019): Belay Skills: Second of four climbing workshops aimed at developing skills for 3rd, 4th, and 5th class climbing both as a participant or a future Sierra Club M and E leader. This workshop will focus on belaying and related principles, starting with standard sport climbing all the way up to advanced techniques to move large groups across dangerous terrain. All participants must have prior roped climbing experience and commit to all four classes. To register please see <http://www.advancedmountaineeringprogram.org> Ldr: Matthew Hengst. Assts: Dan Richter, Patrick McKusky.

Oct 19 | Sat **LTC, SPS, DPS, WTC**
M/E-R: Advanced Mountaineering Program (Fall 2019): Rappelling: Third of four climbing workshops aimed at developing skills for 3rd, 4th, and 5th class climbing both as a

participant or a future Sierra Club M and E leader. This workshop will focus on rappelling using a variety of techniques with a heavy emphasis on redundancy, safety, and efficiency. All participants must have prior roped climbing experience and commit to all four classes. To register please see <http://www.advancedmountaineeringprogram.org> Ldr: Matthew Hengst. Assts: Dan Richter, Patrick McKusky.

Oct 26-27 | Sat-Sun **LTC, SPS, DPS, WTC**
M/E-R: Advanced Mountaineering Program (Fall 2019): Anchors and Systems: Fourth of four climbing workshops aimed at developing skills for 3rd, 4th, and 5th class climbing both as a participant or a future Sierra Club M and E leader. This weekend completes the series of AMP workshops at Joshua Tree National Park and focuses on building anchors and applying previously learned skills in real world climbing situations with multiple participants. All participants must have prior roped climbing experience and commit to all four classes. To register please see <http://www.advancedmountaineeringprogram.org> Ldr: Matthew Hengst. Assts: Dan Richter, Patrick McKusky.

Nov 1-3 | Fri-Sun **LTC**
C: Wilderness First Aid Course at Harwood Lodge: The course runs from 7:15 am Friday to 5:00 pm Sunday. Fee includes instruction, lodging and meals. Proof of CPR within previous 4 yrs required to enroll. Fee \$315 (full refund until 9/27). For sign-up, see instructions and application at www.wildernessfirstaidcourse.org.

Nov 2 | Sat **LTC, WTC, HPS**
I: Navigation: Beginning Clinic: Spend the day one-on-one with an instructor, learning/practicing map and compass in our local mountains. Beginners to rusty old-timers welcome, and practice is available at all skill levels. Not a checkout, but it will help you prepare. Many expert leaders will attend; many I-rated leaders started here in the past. 4 mi, 500' gain. Send sase, phones, rideshare info, \$25 deposit (Sierra Club), refunded at trailhead to Leader: Diane Dunbar. Co-Ldr: Richard Boardman.

Nov 9-10 | Sat-Sun **LTC**
M/E-R: Indian Cove Rock Checkoff and Practice: M- and E-level rock checkoff and practice for LTC leadership candidates wishing to pursue a rating or practice skills. Also open to Advanced Mountaineering Program students wanting to solidify what they learned in the course. Practice Sat and optionally checkoff Sun. Restricted to active Sierra Club

OUTINGS

members with previous rock climbing experience. Climbing helmets and harnesses required. Email climbing resume to leader to apply. Ldr: Patrick McKusky. Assts: Dan Richter, Matthew Hengst.

Nov 16-17 | Sat-Sun LTC, WTC, HPS, DPS, SPS

I: Navigation: Mission Creek Preserve Navigation

Noodle: Navigation noodle at Mission Creek Preserve to satisfy the basic (I/M) level navigation requirements. Sat for practice, skills refresher, altimeter, homework, campfire. Sun checkoff or additional practice. Send email with contact info (mailing address, phone numbers), navigation experience/training, any WTC, leader rating, rideshare to Leader: Robert Myers. Assistant: Ann Shields. Note: Early (at least two weeks prior to the event) sign-up for all navigation checkoffs and practices is recommended. These outings require substantial

pre-outing preparation work, including completion of both a comprehensive written exam and a route planning assignment that will be mailed to you prior to the checkoff. See Chapter 6 of the *Leader's Reference Book* for more information.

Dec 8 | Sat

LTC, WTC, HPS, DPS, SPS

I: Indian Cove Navigation Noodle: Navigation noodle at Joshua Tree National Park to satisfy the basic (I/M) level navigation requirements. Practice skills or checkoff. Send email with contact info (mailing address, phone numbers), navigation experience/training, any WTC, leader rating, rideshare to Ldr: Robert Myers. Asst: Ann Shields. Note: Early (at least two weeks prior to the event) sign-up for all navigation checkoffs and practices is recommended. These outings require substantial pre-outing preparation work,

Wilderness Permit Info

In addition to the permit information described below, most reservations for the Inyo National Forest and the Desolation Wilderness up to 48 hours in advance of entry can be handled at: <http://recreation.gov>

INYO NATIONAL FOREST

Web site: www.fs.usda.gov/main/inyo/home
Pick up permit closest to departure trailhead.

Eastern Sierra InterAgency Visitor Center, Lone Pine, CA
(760) 876-6200

White Mountain Ranger Station, Bishop, CA 93514
(760) 873-2500

Mammoth Lakes Visitor Center, Mammoth Lakes, CA 93546
(760) 924-5500

Mono Basin Scenic Area Visitor Center, Lee Vining, CA 93541
(760) 647-304

KERN PLATEAU

Web site: www.r5.fs.fed.us/sequoia

Cannell Meadow Ranger District
105 Whitney Road
P.O. Box 9
Kernville, CA 93238
Phone: 760/376-3781 fax:
760/376-3795

Tule River Ranger District
32588 Highway 190
Springville, CA 93265
Phone: (559) 539-2607

YOSEMITE NATIONAL PARK

Web site: www.nps.gov/yose
Reservation requests for summer trips (mid-May through September) are accepted from 2 weeks to 24 weeks in advance on-line or by writing to
Yosemite Association
PO Box 545
Yosemite, CA 95389

By phone: reservations for summer trips are accepted by calling (209) 372-0740.

Obtain your free permit from the Wilderness Permit Station nearest your departure trailhead. Call (209) 372-0200 for permit station locations.

If entering park from Cherry Lake in the Stanislaus National Forest to Kibbie Lake and Lake Eleanor in

Yosemite, you must get your permit from the Stanislaus National Forest Ranger Station on Highway 120 in Groveland. Call (209) 962-7825. If entering the park from Chiquito Pass in Sierra National Forest, permits for the whole trip must be obtained from the forest Service in North Fork. Call (559) 877-2218

SEQUOIA AND KINGS CANYON NP

Web site: www.fs.usda.gov/sequoia
47050 Generals Highway
Three Rivers, CA. 93271-9599
Phone (559) 565-3766 for permit & trail info. Fax (559) 565-4239

SIERRA NATIONAL FOREST (WESTSIDE) ENTRY

Web site: <https://www.fs.usda.gov/sierra>
Ansel Adams Wilderness—North Bass Lake Ranger District
57003 Road 225
North Fork, CA 93643
Phone: (559) 887-2218

Ansel Adams Wilderness—South John Muir, Kaiser and Dinkey Lakes Wildernesses
Pineridge/Kings River Ranger District
29688 Auberry Road
Prather, CA 93651
Phone: (559) 855-5355

OUTINGS

including completion of both a comprehensive written exam and a route planning assignment that will be mailed to you

prior to the checkoff. See Chapter 6 of the *Leader's Reference Book* for more information.

SPS Management Committee Meeting Monday, June 10, 2019 7:00 p.m. Via Conference Call

1. Call to order at 7:20; present on the call were Jim Fleming, chair; Alexander Smirnoff, treasurer; Paul Garry, vice chair/banquet; Laura Newman, fifth officer/outreach; Tina Bowman, secretary; Phil Bates, outings.
2. Standard business and reports.
 - a. Approval of minutes (April)—Done via e-mail.
 - b. Chair—nothing to report now.
 - c. Vice Chair—Banquet report (2020)—Paul will call Almansor court to reserve a room for January 26. We'll also be on the search for presenters; Alexander is willing to give a slide show about his climb of Denali in 2018.
 - d. Outings—19 SPS-sponsored or co-sponsored outings. Rejected four or five outings led by WTC leaders who aren't SPS members; Phil reached out to the leaders to invite them to join the SPS. Didn't receive positive feedback, didn't see value in joining another group. Discussion about this issue. Seems the younger WTC leaders are more willing to join the SPS. Offer a development track to entice people to try and join the SPS, perhaps a post-WTC development track which might or might not include outings, perhaps along the lines of what Mike Adams offered for a couple of years to WTC students. Or Nile's glacier travel. AMP provides basic rock training, but not a lot of trips aimed at them (more private climbing). More advanced training sequences. Phil will put together some concrete suggestions.
 - e. Treasurer's report—now have account at Wescom but need to change the name to include Sierra Club with SPS; Alexander will do that. The SPS has \$10,451 in the bank.
 - f. Emblem Committee Report—Signe Swensen has earned both her Geographic and Smatko Emblems.
 - g. Outreach—Laura attended a meeting on the weekend in Merced County and talked about the benefits of joining SPS.
 - h. Archives—Ross materials have been collected and are being stored in Independence until archivist Dan Richter can collect them. Maybe some duplicate or similar photographs can be donated to the Eastern California Museum in Independence, which has a few of Tom Ross' photos.
 - i. *Echo*
 - i. Deadline for next issue is August 25 (October-December issue)
 - ii. Some of the earlier issues of the *Echo* still need to be scanned and the scans made available on the web site. Laura is getting some issues from Bob Ayers.
 - iii. Move to HTML version (update)—no progress.
 - j. Mountain Records—no report.
 - k. IT—no report. Jim will check with Harry Langenbacher.
 - l. Website—no report.
 - m. Conservation—no report.
 - n. Safety Chair—no report. Work is still to be done on the new waiver by National with input from chapters.
3. Old business
 - a. SPS outings leadership—membership (see outings chair report above).
4. New business
 - a. Next meeting will be, Monday, August 12, 7:00, either by teleconference, Alexander to arrange.
 - b. Meeting adjourned at 8:00.

Respectfully submitted,

Tina Bowman
Secretary

Minutes approved by email.

SPS Management Committee Meeting
Monday, April 8, 7:00 p.m.
At Alexander Smirnoff's Home

1. Call to order at 7:02; present on the call were Jim Fleming, chair; Alexander Smirnoff, treasurer; Paul Garry, vice chair/banquet; Laura Newman, fifth officer/outreach; Tina Bowman, secretary; Harry Langenbacher, mountain records and website; and Greg Mason, IT.
2. Standard business and reports.
 - a. Approval of minutes (February)—Done via e-mail.
 - b. Chair—nothing to report now.
 - c. Vice Chair—Banquet report (2020)—January 26th, Almansor court if possible. Paul will check availability. We'll also be on the search for presenters; Alexander is willing to give a slide show about his climb of Denali in 2018. We discussed subsidizing the ticket cost, perhaps the increase from last year if there is one.
 - d. Outings—no report.
 - e. Treasurer's report—We again authorized treasurer Alexander to move the bank account to Wescom Credit Union, approved unanimously. The SPS has \$9,599.10 in checks to deposit in the new account.
 - f. Emblem Committee Report—no new emblems.
 - g. Outreach—no report.
 - h. Archives—no report.
 - i. *Echo*
 - i. Deadline for next issue is May 25 (July-September issue)
 - ii. Some of the earlier issues of the *Echo* still need to be scanned and the scans made available on the web site. Laura has some issues from Greg Gerlach to scan, waiting for information re file size and such details, redacting information. Discussion of what to redact and settled on membership rosters for now.
 - iii. Move to HTML version (update)—no progress.
 - j. Mountain Records—Daryn Dodge reported that someone surveying the summits of Mt. Adams said the east summit is one-to-two feet higher than the

west summit (the SPS summit). However, the map shows the name of the peak by the west summit and has a benchmark. We'll keep the west summit as the SPS summit.

k. IT—Greg reported that the sierrapeaks.org domain belongs to the SPS and that he moved it from his personal GoDaddy account to the SPS Google Suite (G Suite, Google Apps) account, where we can archive information, provide email addresses (like chair@sierrapeaks.org) etc—a free account that belongs to the SPS. To maintain the domain will cost \$12 a year. Greg needs to be reimbursed for two GoDaddy and one Google receipts. A legacy website can be attached to sierrapeaks.org, and Greg can help with that. Discussion between Harry and Greg about the legacy site, which they will continue after the call. Harry also wishes to improve the archive by fixing broken links.

l. Website—see item above.

m. Conservation—no report.

n. Safety Chair—no report.

3. Old business

a. SPS management committee—new officer positions—no changes from last year.

4. New business

a. Next meeting will be Monday, June 10th, 7:00, either by teleconference or at Alexander's home (TBD).

Minutes approved by email following the meeting on April 8th, 2019, to expedite setting up the account at Wescom Credit Union.

Addendum (April 21, 2019): the management committee had a brief conference call to discuss and approve treasurer Alexander Smirnoff as the only signer on the new account to be established at Wescom Credit Union and also as the person authorized to set up the account. The vote was unanimous, and the minutes with the addendum were typed, distributed, and approved unanimously by email on April 22, 2019.

A Treasury of the Sierra Nevada

Robert Leonard Reid, Editor

363 pages

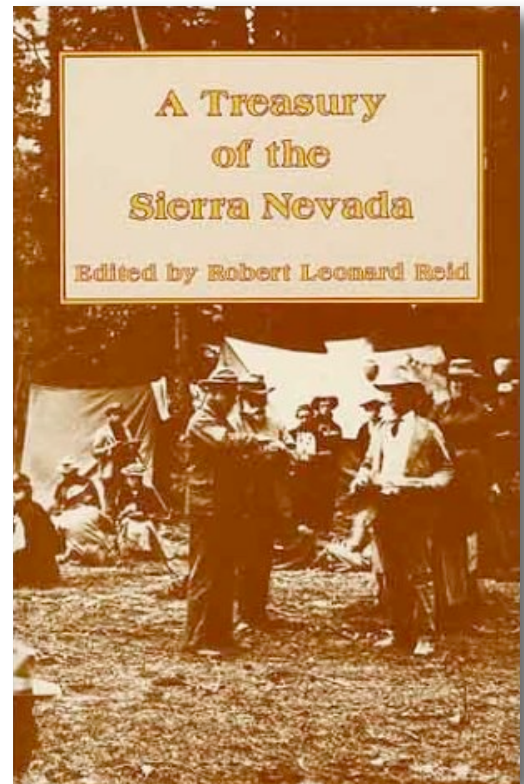
Copyright 1983

Wilderness Press

By Michael Chamoun

Typing in the word “Sierra” in my local library search catalog, I had hoped to find some book, any book really, that involved the Sierra Nevada that I hadn’t read. Perusing the results, a book printed in 1983 called *A Treasury of the Sierra Nevada* by Robert Leonard Reid was the last one of the lot. Though never having heard of it, it was just intriguing enough to warrant a trip to the library. On my way over, I thought that either one of two things would happen: I was going to find out quickly why there was only one edition printed or that it was a hidden gem. I’m thrilled to say it was the latter.

Reid chose and collected these seemingly random and perhaps forgotten works from various people who experienced and, fortunately for us, wrote their accounts. He compiled them to create an interesting first person historical narrative of the Sierra. The majority of the published works shared are short stories neatly organized into six



sections: The Explorers, The Immigrants, The Vacationers, The Naturalists, The Mountaineers, and The Conservationists. Each section has anywhere from seven to thirteen accounts by folks who were either influential in their respective categories or wrote poignant essays about their particular experience. Some names are of people that we in the SPS hold in reverence: John Muir, Norman Clyde, Theodore Solomons, William Brewer, David Brower. Yet there are others whose names, though recognizable, are very loosely associated with the Sierra: Mark Twain, Jack London, Ralph Waldo Emerson. Last are the completely forgotten works of people who are far from household names but had powerful stories to share: Mary Cone, Dan DeQuille, Clara Barrus, Elisha Cotton Winchell.

Reid unearthed works from monthly publications even our most ardent historians would have a hard time recalling. One example is the account of “Snow-shoe Thompson” from an article in the *Overland Monthly* of October 1886. Some of my favorite works came from people I didn’t know. Reid does a wonderful job introducing and giving context about each work selected in concise

At left: “Rambler Phelps, Bolton, Perkins, Prof. Le Conte, Soule, Linderman, Cobb, Stone, Hawkins, Pomeroy.”

BOOKS

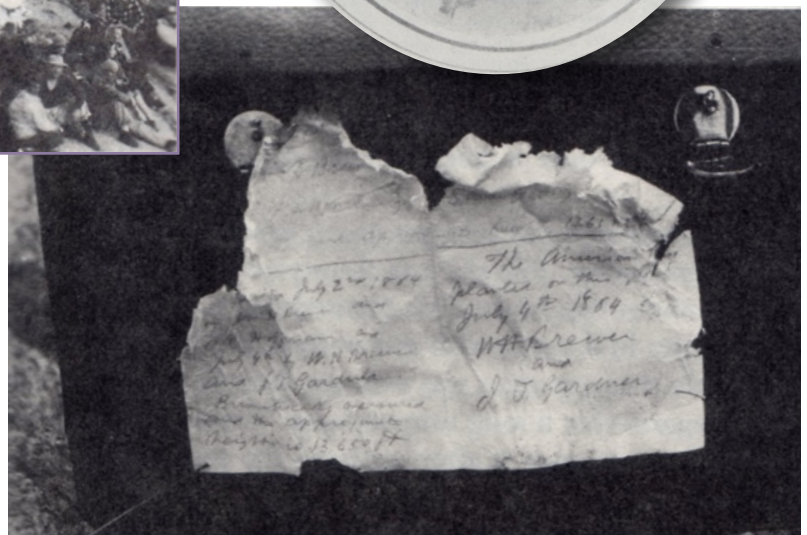
and interesting descriptions. One of my favorite stories is by Mary Cone, who wrote her account "On Horseback to the Yosemite" (from *Two Years in California*) in the early 1870s. Prior to the building of the stagecoach road to Yosemite Valley in 1874, a tourist had to endure a harrowing horseback ride to the Valley.

After an arduous journey, Mary Cone

came to Inspiration Point, where we were to have our first view of the remarkable place we had come so far to see. As we neared the spot, silence fell upon the party—all were busy with their own thoughts. Faith was soon to be turned into sight. With our own eyes we should soon verify what had been told us of this wonderful valley, like which there was said to be no other. That supreme moment, desired so long, hoped for through years, was near at hand. Then there was, after all, a vague uncertainty as to what the sight would be to us individually. Would our hopes or our fears be realized? The veil would soon be lifted, and we should know for ourselves—no longer see

through the eyes of others. We dismounted at a little distance, and were soon on the edge of the precipice. There it was—this trough hewn out of the mountains. Awe-struck I stood, mute, and almost immovable. I should have been glad to be all alone in this first interview with God, manifest in so wonderful a way . . . it was the grand whole that bewildered and overwhelmed us.

There's nothing like reading the first-hand accounts from the people who experienced the Sierra in a bygone era, and I encourage the reader to seek this collection of works for a different perspective on the range.



Above: "A Sierra Club campfire, 1940's." Top right: "Members of the California State Geological Survey, 1864. Left to Right: James Gardner, Dick Cotter, William Brewer, Clarence King." At right: "Mt. Brewer summit register with Brewer's and Gardner's signatures."



Frances Rayne Motheral

1926 - 2019

By Mary Motheral

Rayne was born June 7, 1926, to LT Ricks and Edward Albert Motheral in Yuba City, California. LT raised Rayne and his brother, Gail, with whom he was very close, in the San Joaquin Valley. Upon graduating from Caruthers High School, Gail went into the coast guard, while Rayne joined the marines. His tour of duty consisted of mop-up operations in Guam and Hiroshima at the close of WWII.

Using the G.I. Bill, Rayne entered U. C. Berkeley and graduated with a degree in biology. While at Cal, he became a founding member of the U.C. Hiking Club and

Above: Rayne Motheral on the summit of Aconcagua, Argentina, February-March, 1981 (Photo courtesy Mary Motheral).

twice, and Mt. McKinley with the Canyon Explorers Club. A less successful climb was an attempt of Peak Communism, where his team aborted in order to assist another expedition in trouble.

Rayne met Shirley Lewis in the hiking club. They were married June 9, 1951. He hoped to utilize his biology degree in the forest service, but jobs were unavailable. Seeing a recruitment poster for firefighters in Los Angeles, Rayne jumped at the opportunity; he and Shirley moved from Berkeley to L.A., where they raised their children, Margaret, Bob, and David. He was a family man and good provider. Rayne worked his way up the ranks of L.A. City firefighters from rookie to battalion chief, retiring in 1988.

At this point in his life, he started leading safaris to Kenya. Sadly, Shirley became ill on one of those trips and passed a few months later. I had met Rayne climbing

participated with members climbing in Yosemite. At that time, gear was basic, consisting of tennis shoes and hemp ropes with real nuts and bolts for protection. Up until recently early members of the U.C. Hiking Club held reunions every year in a wilderness area—sixty plus years of sustained friendship! Climbing stuck with Rayne, and he summited many peaks, including Aconcagua, Kilimanjaro

PASSAGES



Denali and joined him on that safari. We subsequently married. We had a lot in common: similar political and religious views, graduation from Cal, mountaineering, reading, and travel, which we enjoyed extensively throughout our thirty-two years of marriage.

Rayne had a great sense of humor and equanimity, which undoubtedly served him well in fire department management positions and made him popular with friends. He passed March 12, 2019, due to pneumonia.

Top: Mt. Kosciusko, February 19, 1994. Doug Mantle's seventh continental high point, Australia.

Left to Right: Vi Grasso, Betty McCruer, Rayne Motheral, Doug Mantle, Katie Hicks, Bob Hicks.

Below: Mt. Izaak Walton, August 29, 1993. Left to right: Mary Motheral, Rayne Motheral, Dale Van Dalsem. (Photos courtesy Mary Motheral).



PASSAGES



Mary Sue Miller

June 3, 1932-April 16, 2019

By Jerry Keating

Mary Sue Miller, approaching age eighty-seven and dealing with various health issues, passed away at home in Santa Barbara during the early morning of April 16, 2019.

Mary Sue chaired the Sierra Peaks Section in 1986 and also served on the section's management committee during the two previous years. She was an emblem holder in both the SPS and the Desert Peaks Section, and she chaired the DPS in

Above: Mary Sue Miller on the 2007 SPS Old Timers Trip to the Needles (Photo by Jerry Keating). Right: with Whitney behind.

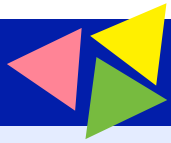
1982. She regularly was part of the SPS's old-timers series which ran until September 2014, and she participated in Canyon Explorers Club events through February of 2019.

An Oklahoma native, Mary Sue went on to live and teach school in Seattle, New York, and California and later to live in two Arizona locations, Tucson and Patagonia. For the past nine years, she was Dick Drosendahl's companion in Santa Barbara and was with him on the SPS old-timers series as well as on CEC trips to the Anza-Borrego Desert led by Ben Preyer, a former SPSeer, and Dick.

One of my memorable times with her was on September 8, 2007, on a trip that was part of the SPS old-timers series. Mary Sue, John Robinson, and I, all being past SPS chairs, stopped together rather than continuing on to The Needles, which was in sight. John and I had climbed that lookout site on an SPS backpack in October 1959, and that started an extended conversation about our mutual affection for the Sierra Nevada and the friends we've made while being within it. At the time of our conversation, Mary Sue was residing in Tulsa and didn't have any such spires as The Needles to view, but she did savor being among twenty-two persons standing atop Dome Rock the morning after our memorable conversation.

Let today's young SPSeers remember how meaningful your time with fellow climbers will become as you grow older and they no longer are able to be active as they once were.





Mystery Peak Challenge Answer

Hal Browder's photo used as last issue's Mystery Peak is of University Peak. It was a popular puzzle. First to answer correctly was Bart O'Brien, followed by Ron Bartell, and then Mark Goebel. First to answer was Alois Smrz with the north side of Mt. Langley and Daryn Dodge with Mt. Williamson and its two sub-peaks.



Time to Renew

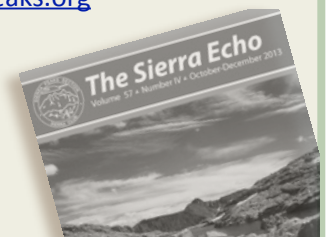
Don't let your *Sierra Echo* subscription expire! The annual \$10 subscription is due each year by January 1st and delinquent after March 31st.

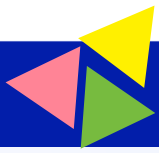
For more information, see the back cover of this issue. Please make out checks to the Sierra Peaks Section and mail to the treasurer:

SPS Treasurer
1701 Paloma St.
Pasadena, CA 91104

REGARDING DISTRIBUTION OF THE *ECHO*

Please contact this email address newsletter@sierrapeaks.org for any problems with distribution of hardcopy or email versions.



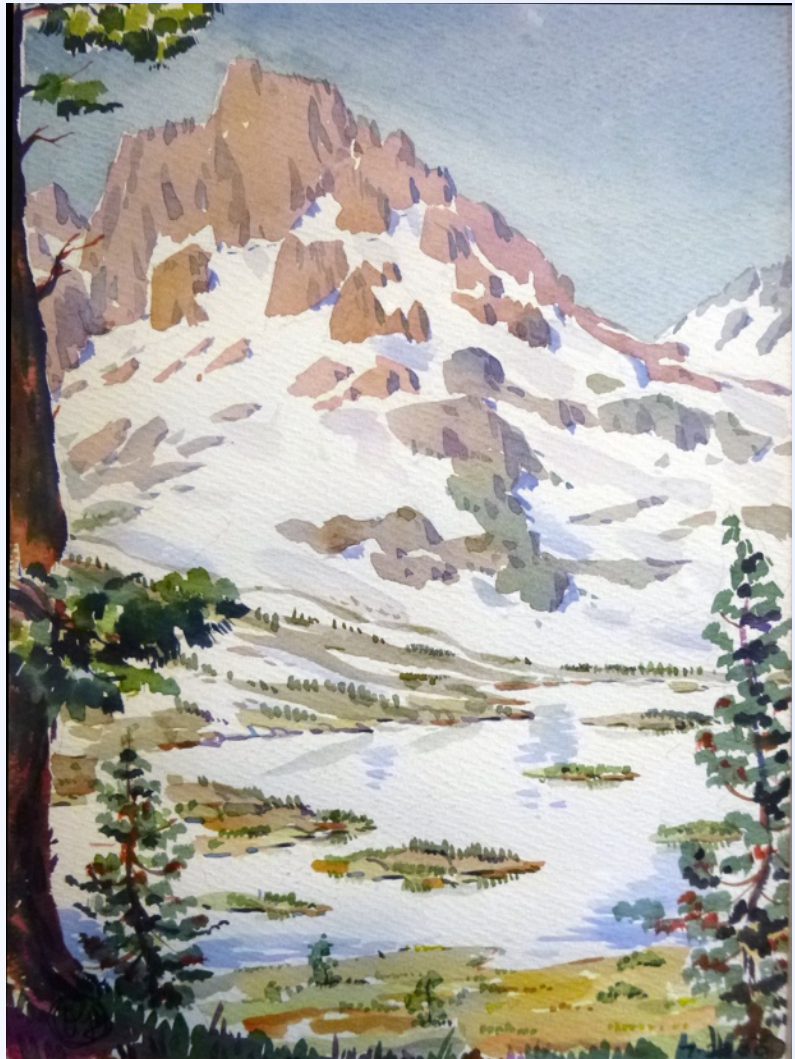


Mystery Peak Challenge

This occasional just-for-fun puzzle is for you to figure out which Sierra peak or peaks are featured in the image. If you have a fine mystery peak puzzle to challenge *Echo* readers, please send it to tina@bowmanchange.com. We welcome any mountain images, including those from popular culture—imagery used and abused in film and print!

Can you name the peak and lake included in this painting by Ottmar Goebel, Mark Goebel's father?

Send your answer to Tina Bowman at tina@bowmanchange.com.



The Sierra Echo

is a quarterly publication of the Sierra Peaks Section of the Sierra Club's Angeles Chapter. For more information, see the back of this newsletter. All questions, copy, and photo submissions should be directed to Tina Bowman, Editor, *The Sierra Echo*, preferably via email at tina@bowmanchange.com. Refer to the SPS Roster for mailing address. The *Echo* will also be available as a PDF download at the SPS website and via a link sent to all SPS members opting for this method.





The Sierra Echo

Volume 63 ▲ Number 3 ▲ July-September 2019

The Sierra Echo is published quarterly by the Sierra Peaks Section (SPS) of the Sierra Club, Angeles Chapter.

Publication dates are Mar 15, Jun 15, Sept 15, and Dec 15. All text submissions for publication, including trip reports, articles, etc., can be submitted in electronic format such as MS Word (preferred), WordPerfect, email (electronic format is preferable), or through regular U.S. mail. Photos may be submitted as electronic files (jpeg, tiff, or Photoshop in a resolution high enough for print media) or submitted as prints or slides. If submissions are to be returned to you, please include a return envelope with sufficient postage. **All submissions should be sent to Tina Bowman or emailed to tina@bowmanchange.com**

Deadline for all submissions is three (3) weeks prior to the publication date, i.e., Feb 22, May 25, Aug 25, and Nov 24.

The Sierra Echo is the property of the Sierra Peaks Section of the Sierra Club, Angeles Chapter. All rights reserved. The Sierra Peaks Section maintains a website at www.sierraclub.org/sps

Subscriptions \$10 per year, due by January 1, delinquent after March 31. Subscribing to the *Echo* is a requirement for membership in the SPS. A suggested donation to the section is \$25, which includes the \$10 subscription and a \$15 donation to the SPS operating fund. Thank you for your support of the SPS. For new subscriptions and renewals or to apply for membership, fill out the subscription and renewal form or new member form that can be found on the SPS website under "Membership Requirements" at the bottom of the page: <https://www.sierraclub.org/angeles/sierra-peaks/new-members#mr>. Mail the form and your check to the SPS Treasurer, 1701 Paloma St., Pasadena, CA 91104; make sure to include your Sierra Club number if you are applying for membership.

To subscribe or renew on-line, please email the form to the treasurer (treasurer@sierrapeaks.org). Then pay via PayPal for renewals using the email address treasurer@sierrapeaks.org. Note that first-year memberships or subscriptions are free. New applications received after October 1 are credited to the following year. Only one *Echo* subscription is necessary for multiple members of a family residing at one address. Contributions or gifts to the Sierra Club are not tax deductible.

Advertising Private activity announcements and advertisements are accepted at the following rates: \$1 for the first four lines and \$1 each additional line. Other announcements and product/service advertisements are \$1 per line or \$25 for half-page space. Send copy and check to the *Echo* Editor, payable to SPS.

Address Changes Send to the treasurer via email treasurer@sierrapeaks.org

Peaks List Copies of the SPS Peaks List can be downloaded from the website here: <http://sierraclub.org/angeles/sierra-peaks/sps-peaks-list>

Missing Issues Inquiries regarding missing issues should be directed to the section mailer at: newsletter@sierrapeaks.org.

Awards Send notification to Secretary Tina Bowman: email tina@bowmanchange.com. Awards merchandise is available through Patty Kline at 20362 Callon Drive, Topanga, CA 90290, and include emblem pins (\$15) and SPS section patches (\$5). Make checks payable to SPS. All prices include sales tax.

**Sierra Club, Angeles Chapter
Sierra Peaks Section
3250 Wilshire Blvd., Suite 1106
Los Angeles, CA 90010**

ADDRESS SERVICE REQUESTED