



The Sierra Echo

Volume 67 ▲ Number 3 ▲ July-September 2023



Snow Practice Returns!

*Tom McDonnell teaches the bollard.
Story on page 7 (Photo by Tina Bowman).*

Echoes from the Chair

Time for Plan C

I love January: the calm after the holiday storm when I can sit down with my peak wish list and plan for the upcoming season—backcountry and day hike peakbagging trips—collaborating with partners until we've got our Plan As in place.

But I learned long ago that Plan Bs are wise to have as back-ups. It's always just a matter of time before I come home in the spring to find a wedding invitation in the mail—oh no, not that weekend! Time for Plan B. Or waiting for the release of my kid's climbing comp schedule—Shoot! Plan B again. My microbiology professor always



preached "Adapt or Die," a mantra I've adopted for my Sierra endeavors.

This season, more than ever, it will be smart to have an extra level of adaptability—put some Plan Cs in the bag. With this record-breaking winter, many roads will not be open long into the summer, if at all. And news of backcountry bridge washouts doesn't bode well for many trails. Have fun out there and don't be afraid to adapt when Plan A (or B) falls through!

Jason Pair

Revised SPS List of Peaks

The SPS List has been revised to reflect the change in ratings for two peaks approved in the last election. You can find it here: <https://www.sierraclub.org/sites/www.sierraclub.org/files/2023-05/SPS%20List%2027th%20Edition.pdf>.

Call for Nominations!

It's that time of year when we're looking for members to run for the SPS management committee and to serve on the nominating and election committees. Are you interested? Know someone who might be willing to serve? Please contact Jason Pair, chair, to make suggestions. His email is jasonpair69@gmail.com.

In this issue:

Chair's Column	2
Management Committee	3
Member News	4
Around the Web	5-6
Snow Practice	7-8
Snow History	9
Muir Hut History	10-11
Outings	12-14
Treasurers Report	14
Wilderness Permits	15
Minutes	16-17
Mystery Peak Challenge	18-19

We Need Your Stories!

We need YOU to submit reports of SPS and private climbs, Trail Tech articles, Mystery Peak challenges, and anything else you think would be of interest to *Echo* readers! Please send submissions to co-editor Tina Bowman at tina@bowmanchange.com.

Thanks!



2023 Sierra Peaks Section Management Committee

Elected

Jason Seieroe	Chair jasonpair@gmail.com
Paul Garry	Vice-chair/banquet vicechair@sierrapeaks.org
Laura Newman	Treasurer sierrapeakstreasurer@gmail.com
Phil S. Bates	Secretary philsbates54@gmail.com
Phil A. Bates	Fifth officer/outings philipabates@gmail.com

Appointed

Archives	Dan Richter dan@danrichter.com
Conservation Chair	Sharon Moore justslm@earthlink.net
Echo editors	Tina Bowman tina@bowmanchange.com , Beth Epstein
Echo mailer	Tina Bowman
Emblem Committee	Phil S. Bates, Kathy Rich, Daryn Dodge, Ron Bartell, Bob Pickering
IT Support	Greg Mason admin@sierrapeaks.org , Harry Lagenbacher admin2@sierrapeaks.org
Keeper of the List	Tina Bowman
Merchandise	Patty Kline patriciakline@aol.com
Mountain Records	Harry Langenbacher register@langenbacher.org
Outings	Phil A. Bates philipabates@gmail.com
Safety Chair	Doug Mantle sierradoug@icloud.com
Webmaster	Joe Wankum jbwankum@aol.com
Asst. Webmasters	Harry Lagenbacher register@summitregister.org Tina Bowman tina@bowmanchange.com

Regional Representatives

San Diego	Joe White
Central California	Daryn Dodge
Northern California	Lisa Barboza

Time to Renew!

Subscriptions to the Echo expire on December 31st. If you haven't renewed, please do so! You can download the renewal form from the SPS web site here: <https://www.sierraclub.org/angeles/sierra-peaks/membership>.



Dare to Lead! Virtual Leadership Training Fall Seminars 2023

Interested in starting on your path to become an Angeles Chapter outings leader? The first step is to take the Leadership Training Seminar offered virtually this fall on Saturday, October 14, and Sunday, November 5. The five-hour class costs \$25. The application is on-line at <https://www.sierraclub.org/sites/default/files/sce/leadership-training-committee-and-outings-management-/2022-LTP-seminar-app-fill2.pdf>, where you can also check for the dates for future seminars. At this site, <https://www.sierraclub.org/angeles/leadership-outings/angeles-chapter-leadership-training-program>, you can learn more about the Leadership Training Program.



Welcome New Members!

Philip Martin

Philip Martin has been hiking in the Sierra with friends and family for twenty-plus years. Every trip is a different, fun adventure. Philip looks forward to many more years wandering the range. He is always up for seeing new sites and learning new things about the Sierra.



Keith Schwab

Keith grew up in Missouri, and his love of the mountains began in the Boy Scouts with trips to Philmont in New Mexico in the 1980s. He loves the Eastern Sierra and spends as much time there as he can, either on foot exploring the trails and peaks or in a sailplane on cross country flights. He is very active in Summits on the Air (SOTA) and is looking forward to the challenge to get on top of many of the Sierra peaks. When not outdoors, Keith is a physicist and professor at Caltech and spends time with his family with two young children.



FREE First Year's Membership or Echo Subscription

New subscribers and members can receive their first year's subscription for free! Download the Membership Application Form at <http://sierraclub.org/angeles/sierra-peaks/new-members#mr>. Please contact the chair if you have any questions.



around-the-web/ *By Dave Sholle*

Editors' note: Dave Sholle is our correspondent for this column, sharing web links that SPS members may find interesting. If you see something you think would interest other members, please send it to Dave at dsholle@verizon.net.

Some of these links may be behind paywalls.

Famed Sierra Club climber Allen Steck dies:
<https://gripped.com/news/legendary-american-climber-allen-steck-dies/>.

Tom Hornbein:
<https://www.outsideonline.com/outdoor-adventure/climbing/remembering-tom-hornbein-everest-pioneer/>.

A humorous claymation animation of SAR going horribly wrong:
<https://gearjunkie.com/winter/hors-piste-animated-ski-short-film>.

Surviving a 200' fall in the San Gabriels:
https://edition.pagesuite.com/popovers/dynamic_article_popover.aspx?guid=edfe2389-4ed7-4377-b52f-92ad5b91b195&v=SDK.

Five friends ski the highest mountain in LA:
<https://www.latimes.com/sports/story/2023-02-28/five-friends-ski-tallest-mountain-los-angeles>.

Guidebooks Are Still a Problem, by Doug Robinson:
<https://www.climbing.com/people/guidebooks-are-still-a-problem/>.

Climate change is reshaping the Alps:
<https://www.bbc.com/future/article/20230322-how-climate-change-is-melting-permafrost-in-the-alps>.

Ice climber in Utah dies after pushing another climber out of the way of falling ice:
<https://www.cnn.com/2023/04/06/us/utah-ice-climbers-duchesne-county/index.html>.

A group of seldom visited and climbed peaks in Canada:
<https://blog.alpineclubofcanada.ca/blog/gmc-2023-chess-group>.

Movie of the 1963 first ascent of the Central Tower of Paine in Patagonia:
<https://www.planetmountain.com/en/news/alpinism/watch-1963-first-ascent-central-tower-of-paine-patagonia.html>.

From Patti Mailman, Fire, Then Ice:
<https://www.nytimes.com/2023/03/15/opinion/california-snow-storm-flood-atmospheric-river.html>.

Tent Condensation:
<https://backpackinglight.com/vapor-pressure-differential-tent-condensation/>.

Five days on the North Face of the Grandes Jorasses:
<https://www.petzl.com/CA/en/Sport/News/2023-4-18/Five-Days-on-the-North-Face-of-the-Grandes-Jorasses-with-Symon-Welfringer>.

Camille Herron sets new 48 hour ultra-running record:
<https://www.trailrunnermag.com/people/camille-herron-sets-new-womens-48-hour-running-world-record/>.

FKT on Mount Vinson:
<https://gearjunkie.com/news/brazilian-ultrarunner-fkt-mount-vinson-video>.

The Art of Bailing:
<https://backcountrymagazine.com/stories/the-art-of-bailing-turning-around-in-the-face-of-uncertainty/>.

High Sierra Spring/Summer Conditions:
<https://www.reddit.com/gallery/131rcq8>
<https://www.instagram.com/sierramountaincenter/>
<https://sierramountaincenter.com/2023/the-state-of-the-sierra-nevada-backcountry-04-27-2023/>.

around-the-web/ continued

Mount Whitney via Mountaineers Route mid April 2023:
<https://www.youtube.com/watch?v=tfK7GL6tHcE>.

From Jeff Temple, interactive map of European trails, huts and rock climbing areas:
<https://www.european-mountaineers.eu/map>.

After My Father Died, I Found Him Again on Kilimanjaro:
<https://www.outsideonline.com/adventure-travel/essays/kilimanjaro-dad-stephanie-vermillion/>.

This man had luck on his side after getting lost off the back of Mammoth:
https://thesheetnews.com/wp-content/uploads/2023/05/Sheet_05062023.pdf.

When to replace your harness and helmet:
<https://gripped.com/profiles/when-to-replace-your-harness-and-helmet/>.

What are mosquitos attracted to in human body odor?:
<https://www.cnn.com/2023/05/19/world/mosquito-human-body-odor-malaria-scn/index.html>.



Sighting of Wolverine in the Sierra

The California Department of Fish and Wildlife has confirmed the sighting of a wolverine in the Eastern Sierra in the Inyo National Forest (in both Inyo and Mono Counties) and in Yosemite National park. Read more here: <https://wildlife.ca.gov/News/rare-sighting-of-wolverine-confirmed-in-multiple-california-counties#gsc.tab=0> The Los Angeles Times also had an informative article: <https://www.latimes.com/california/story/2023-06-02/rare-wolverine-sighting-yosemite-california..>

Photo Courtesy California Department of Fish and Wildlife

Himalayas:

Three Sherpa climbers missing in Khumbu Icefall avalanche on Mount Everest:
<https://www.outsideonline.com/outdoor-adventure/everest/three-climbers-are-missing-on-mount-everest-after-a-massive-avalanche/>.

Theft on Mount Everest:
<https://abenteuer-berg.de/en/theft-on-mount-everest-rope-fixing-team-at-the-summit-success-on-makalu/>.

Climbers dying on Mount Everest at an alarming rate:
<https://www.outsideonline.com/outdoor-adventure/everest/mount-everest-fatality-rate-ten-climbers/>.

A Daring Rescue on Annapurna:
<https://www.outsideonline.com/outdoor-adventure/everest/anurag-maloo-rescue-annapurna/>.

From Beth Epstein, Where Ansel Adams stood:
https://www.nytimes.com/2023/03/13/travel/ansel-adams-photograph-sierra-nevada.html?unlocked_article_code=FTAtt9Ew0oNmBR0XOnmA75km9cXORK41SKRfnzDgH8VDHraoVpNkpbwgPQXdArWSvVfk7drCLCXDX3wFKDPXGxECodYqDef3LVRR9doqW4XnzwOsBJ4hXl7pgvjLL_3EjyBLzQJ3PASEh6kOjvTLSRExkRcFNZ4Ocu4XrVTNvKuvf-FgQxjfjXk1nCzYXRI6VWger9Ws1biz2AQXcONU4FpN4ofCl5JmAaVm8gYZPEsbHWjskDuHJvywx8IxHe4cYtAegSlhGalbeZtsZOaiaQjk3VwSPaBduAg_sm7Ai6aTk8v1etINsISwd5niMSqQ4fxaekD9A0nHw7eBe1zCstYmBe_9AQBWtl8&smid=url-share.

From Beth Epstein and Tina Bowman, NOAA Aerial footage of Sierra snowpack:
https://www.nytimes.com/2023/04/03/climate/california-storms-snowpack.html?unlocked_article_code=jYIdyYTO9yWUp2Nbt9qICa_6iV0NxlY17KSZ9ynG1A80hnmC-T3ereQ3M_D-8DpCa-dLX03qLD_IFWuGjx3CFPB2cOu53Ncqdw9_CII11yu5ZmtsKH1OS0fOlPty-Hf4p7jgx2pcO49o5G7PxrscVnE6Ye6ALqWoInfkUGGBwhDYCYqUKlpKfHAJWDwzPIVWzbqMoNO5lwgCgQs1XW-MvySCFvH8Qa1FHOq2U_03Pb0JhHxg32_dtdwtMO0BLuYRWdF_6r0MYreikyYvEIPCNe6sld6_E3212IW91Xi-7nu4KYmnBrt_aDae37EPKzambOpAdgvxVvslPdzoAIV1MKek&smid=url-share.

Other aerial surveys of California snowpack:
<https://www.latimes.com/environment/story/2023-05-15/planes-track-california-historic-snowpack>.

It's baaaack!!!

Snow Practice

By Tina Bowman

The Sierra Peaks Section was one of the co-sponsors for a Leadership Training Committee snow practice on Saturday, May 20th, held up the road (closed) from Aspendell and across from the Sabrina Campground. The last practice/checkoff had been held in 2019. Tom McDonnell was the leader with assistants Bob Myers, LTC Outings and Navigation Chair, Regge Bulman, and me. We had a group of six participants, all practicing: Kat Jankaew, Stephen McDonnell (no relation), Casey Sakamoto, Monica Suua, Tohru Onuki, and Lucas Wiltjer. Monica and Tohru also assisted, having passed the checkoff previously.

Tom and I had decided to run the outing as an M-level only practice, which meant we could do it in one day. This worked out very well. Everyone except for one participant was gathered and ready to begin at 6:00. It was 6:15 by the time the late person joined us and we did the trailhead talk and introductions.

Because the Onion Valley Road was still closed, Bob, who handled all the paperwork and logistics (thanks for both!), relocated us up to an area just a little below Lake Sabrina. He and Tohru had been there two weeks previously for an avalanche rescue course, which was held just beyond the gate across the road. That area had



Top: The group at Tom McDonnell's anchor demo, L to R: Regge Bulman, Lucas Wiltjer, Tohru Onuki, Kat Jankaew, Tom McDonnell, Stephen McDonnell, and Casey Sakamoto (Photo by Tina Bowman). Bottom: Kat Jankaew rocking arrest practice (Photo by Bob Myers).

melted out in the two weeks, so we had a nice walk up the road to a good spot. Tom stopped us now and then to discuss some aspects of snow-climbing equipment and such on our way to the practice area. Beyond where we left the road, the road still was snow covered.

We did the usual practice of ascending and descending with crampons, which we then abandoned. We practiced slips with self-belays before glissading and practicing arrests. In teams of two, participants then practiced making bollards, which we had fun testing (all held up), and using other anchor techniques and belays. All but one participant had taken the AMP rock course, and the one who hadn't is signed up for the fall course, so we didn't formally go over knots, though some were used while we did the other rope work.

We had a nice walk back down the road—more great conversations—as the clouds gathered. Arriving a little after 1:00, I think, we'd been at the cars awhile when some thunder began and we had a few drops of rain. Though some of us said goodbye, most of us met again at the Mountain Rambler Brewery and restaurant in Bishop for a late lunch and more great talk. We all agreed it had been a very successful, productive, and enjoyable day.



Top: Tom McDonnell demonstrates ice ax technique. L to R: Monica Suua, Tom McDonnell, and Lucas Wiltjer. Above: Monica Suua enjoying the day (Photos by Bob Myers). At left: Bob Myers meets the group in the morning on the Lake Sabrina road (Photo by Tina Bowman).

Remarkable Snow Years, from the collection of Barbara Lilley

The editors are always grateful to receive the contributions of our members, but especially from Barbara Lilley, a founding member of the SPS, who sent us the image below which she took during a two-week National trip in 1952, another “amazing” snow year. Barbara wrote:

"Looks like the big storms are finally over--at last [from April 7th email]. I've been reading various results of the April snow survey, etc. taken at the usual place. What I gather is that 2023 is the 3rd in snow depth, the second in snowfall and is TIED with 1952 in water content--yikes! Of course, the Southern Sierra is off the charts, with 300% of normal snowfall. . . . I was able to do some research on the internet and learned that the Calif. Dept of Water Resources is the agency that divides the Sierra Nevada into its 3 areas, and that it's divided according to watersheds. The

Southern area includes the San Joaquin River--and thus Mammoth--and the Central area includes the Merced River and much of Yosemite."

"I think I'll mail you my favorite slide from the summer of 1952 for the Echo. . . . Although 1952 still has the record for the total amount of snowfall, there was not nearly as much road damage as there was in 2023. This might be because at least one of the 'atmospheric rivers' in 2023 had a high snow line. This could be the reason the water content of the snow in both years is basically equal."



Snowbridge over the Kings River in the Muro Blanco, Kings Canyon National Park, July 1952 ("It is not recommended to cross either one!")


Muir Hut History

Note: Larry Tidball gave us a few issues of Sierra Club Bulletin from the early 1930s. Below is a selection from volume XV, Number 5, October 1930 (right), which might be of interest to Echo readers. The historic image below appears in the Sierra Club's "John Muir Memorial Shelter", part of its online "The John Muir Exhibit" at https://vault.sierraclub.org/john_muir_exhibit/geography/california/muir-shelter.aspx and is courtesy of Sequoia and Kings Canyon National Park Digital Archive on NP Gallery (Muir Pass Hut, 550813).
—The Editors.

MUIR SHELTER HUT

The construction of Muir Shelter Hut, a gift of Mr. G. Frederick Schwarz, was completed late in September. This unique structure stands on the summit of Muir Pass (elevation 12,059 feet). It is constructed entirely of stone including the conical roof. The design by Henry H. Gutterson, Architect, follows a type of construction much used in the province Apulia in the heel of Italy. Because of the location the builders,





Sierra Club Bulletin

October • 1930
Volume XV Number 5

Published Bimonthly by the Sierra Club, San Francisco, California. Address all communications to the Secretary of the Sierra Club, 402 Mills Building, 220 Montgomery Street, San Francisco, California. The annual dues of the Sierra Club are \$4.00 (first year, \$1.00), of which \$1.00 is for subscription to the SIERRA CLUB BULLETIN. Entered as second-class matter at the Post Office at San Francisco, California, under the Act of March 3, 1879.

SIERRA CLUB ANNUAL DINNER, DECEMBER 6, 1930

The annual reunion dinner and dance will be held in the main auditorium of the Women's City Club of San Francisco, 465 Post Street, on Saturday evening, December 6th, at 7 o'clock. The price of the dinner will be \$2.25 per person. Friends of members are welcome.

JOSEPH LE CONTE'S RAMBLINGS IN THE HIGH SIERRA TO BE REPRINTED

One of the most delightful things ever written about the Sierra is *Ramblings in the High Sierra*, the journal of Professor Joseph Le Conte, giving an account of his excursion to Yosemite, Tuolumne, Mono Lake, and Lake Tahoe in 1870 with a group of University of California students. This journal was printed in 1875 in a small edition for members of the party and was reprinted in Volume III, Number 1, of the Sierra Club Bulletin, in 1900. Both of these editions are now extremely rare and consequently are not available to a large number of people who would enjoy reading Professor Le Conte's story. Consequently, the Board of Directors of the Sierra Club has authorized a reprinting in the form of a small book, and the work is now in process. It is expected that copies will be ready for delivery early in December. The book will be well printed, with a portrait of Professor Le Conte as a frontispiece in photogravure, and several half-tone reproductions of the illustrations in the first edition. It will be bound in boards with cloth back and will be sold for \$2.50 a copy. A circular of announcement and order forms will be issued shortly.

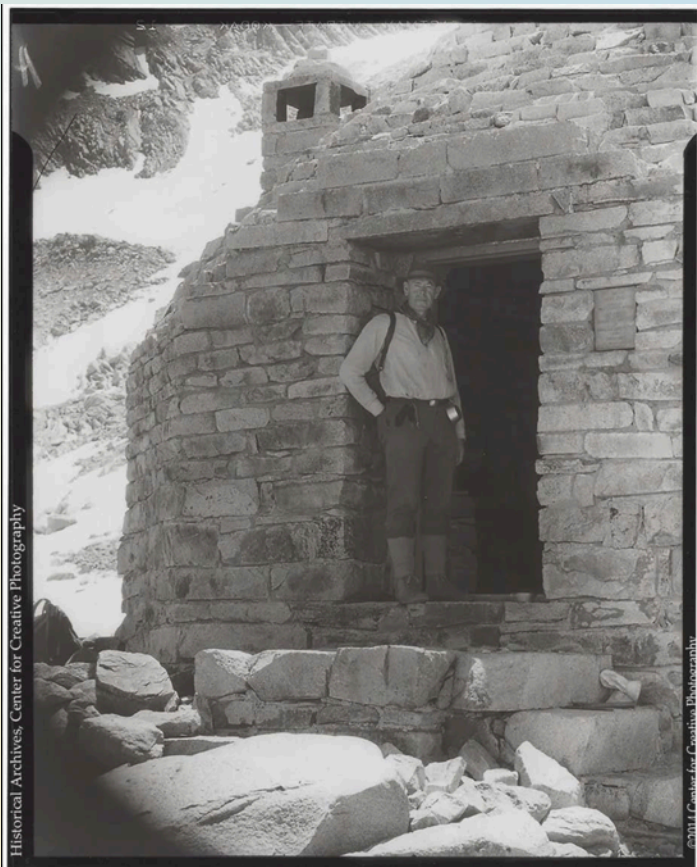
DEDICATION OF AURELIA HARWOOD MEMORIAL LODGE

The Aurelia Harwood Memorial Lodge which has been constructed by the Southern California Chapter of the Sierra Club during the past summer will be dedicated on Sunday, November 16th. The lodge is situated at Manker Flat, approximately sixty miles east of Los Angeles, and will be available for use by members of the Sierra Club all the year round. Since the elevation of Manker Flat is over 6000 feet, the lodge will be used by club members in the winter time as headquarters for winter sports. The dedication exercises will be held Sunday afternoon at two o'clock. Mr. Charles E. Harwood, Miss Harwood's father, will be the guest of honor. Members and their friends are invited to attend.

MUIR SHELTER HUT

The construction of Muir Shelter Hut, a gift of Mr. G. Frederick Schwarz, was completed late in September. This unique structure stands on the summit of Muir Pass (elevation 12,059 feet). It is constructed entirely of stone including the conical roof. The design by Henry H. Gutterson, Architect, follows a type of construction much used in the province Apulia in the heel of Italy. Because of the location the builders, working under the direction of Mike Wenz, foreman, endured

working under the direction of Mike Wenz, foreman, endured great hardships. The packing problems were very serious. It was necessary to pack sand about nine miles and during the last of the construction water was packed about two and one-half miles. Cement and other supplies, including food stuffs, were trucked to Florence Lake and packed from there to the site, a four day trip. Between each regular trip the pack train made a special trip to deliver fuel to the site. Only through the perseverance of the crew, working under the direction of the United States Forest Service, was the work completed before the close of the season.



Above: Architect's 1930 rendering of the Muir Hut from the Sierra Club Bulletin. At left: Sierra Club Secretary William E. Colby standing in the doorway of recently completed shelter, July 1933. Photographer unknown. Source: Historical Archives Center for Creative Photography. Both of these images were included in the NPS National Register of Historic Places application from 2016, found here: <https://npgallery.nps.gov/GetAsset/f6d1156d-6894-479f-88c2-361ccdae0646>.

We've chosen the photo at right taken by Mat Kelliher, showing climbers ascending Mt. Emerson on an SPS trip, to represent the outings section. Do you have a photo you would like to see here? If so, please send your submission as an email attachment to tina@bowmanchange.com or via USPS to Tina Bowman.



Jul 8-9 | Sat-Sun

WTC, SPS

I: Muah Mtn (11,016') and Trail Pk (11,605) Gourmet

Backpack: Join us for Decadent Wilderness Weekend! Sat backpack 4 mi, 700' gain from Horseshoe Meadow to Mulkey Meadow for 5-star dining experience. Sun work off those calories with 2.6-mi, 1400 gain to Muah. Then pack and return to cars with optional side trip to Trail Peak, adding another 3 mi, 1200' gain. Preference given to recent WTC students. Send email and cell phone, recent conditioning, and your most outrageous culinary ideas to Ldr: Ron Campbell. Co-Ildr: Lubna Debbini.

Aug 4-6 | Fri-Sun

SPS

I: Mt. Bago (11,868'): An SPS Intro Trip suitable for newcomers and WTC students. Day 1 hike from Onion Valley to Charlotte Lake, 5.8 miles, 2600' gain. Day 2 climb Bago by

class 1 east slope, 2 mi rt, 1500' gain. Day 3 pack out. Send experience and conditioning information to Ldr: Gary Schenk. Co-Ildr: Tina Bowman.

Sep 21-24 | Thur-Sun

SPS

I: Mt Kaweah (13,802'): Join us to climb an SPS emblem peak, starting from Mineral King. We will backpack on the Sawtooth Pass trail and then use trail to Glacier Pass and down to Spring Lk (10,600'), x-c to the Black Rock Pass trail, over the pass, and down to Little Five Lakes to camp (c. 11 mi, 4850' gain). Fri we'll backpack to Big Arroyo and set up camp (2.9 mi), then pick up the High Sierra Trail for about 3 mi, leaving that to climb Mt Kaweah, mostly a sand slog with some easy talus at the top. Return to camp (totals for the day c. 15 mi, 4600' gain, 5400' loss). Sat we'll retrace our steps over Black Rock Pass and over to Spring Lake to camp (c. 8 mi, 2500' gain, 2100' loss). Sun over Glacier Pass and back to the cars (c. 4.5 mi, 1000' gain, 3600' loss). Medical form is required. Send conditioning to Ldr: Tina Bowman. Co-Ildr: Jim Fleming.

Sep 23 | Sat

LTC, WTC, HPS, DPS SPS

I: Navigation: Mt Pinos Navigation Noodle: Navigation noodle at Mission Creek Preserve to satisfy the basic (I/M)

SPS outings can always be viewed online on the electronic Angeles Chapter Schedule of Activities:
<http://angeles.sierraclub.org/activities>
<https://sierraclub.org/angeles/sierra-peaks/outings-schedule>

OUTINGS

Leaders in this issue's schedule:

Tina Bowman (562) 438-3809 tina@bowmanchange.com

Ron Campbell (714) 425-5169 campbellr@verizon.net

Lubna Debbini (714) 457-0237 lubna.debbini@gmail.com

Jim Fleming (805) 405-1726 flemingjim174@gmail.com

Patrick McKusky pamckucky@att.net

Robert Myers rmmyers@ix.netcom.com

Ann Pedreschi Shields apedreschi@sbcglobal.net

Dan Richter dan@danrichter.com

Gary Schenk (626) 244-4616 gary@hbfun.org

level navigation requirements. Practice skills or checkoff. Send email with contact info (mailing address, phone numbers), navigation experience/training, any WTC, leader rating, rideshare to Leader: Robert Myers. Assistant: Ann Shields. (This is a backcountry outing; a medical form will be required.) Note: Early (at least two weeks prior to the event) sign-up for all navigation checkoffs and practices is recommended. These outings require substantial pre-outing preparation work, including completion of both a comprehensive written exam and a route planning assignment that will be mailed to you prior to the checkoff. See Chapter 6 of the *Leader's Reference Book* for more information.

Oct 4 | Wed **LTC**

ER: Advanced Mountaineering Program (Fall 2023): Knots & Basic Safety Systems: First of four climbing workshops aimed at developing skills for 3rd, 4th, and 5th class climbing both as a participant or a future Sierra Club M and E leader. This will be an indoor workshop held in the evening reviewing ropes, harnesses, helmets, basic climbing gear, and knots in preparation for later workshops. All participants must have prior roped climbing experience and commit to all four classes. To register please see <http://www.advancedmountaineeringprogram.org>. Ldrs: Patrick McKusky, Dan Richter.

Oct 7 | Sat **LTC**

ER: Advanced Mountaineering Program (Fall 2023): Belay Skills: Second of four climbing workshops aimed at developing

skills for 3rd, 4th, and 5th class climbing both as a participant or a future Sierra Club M and E leader. This workshop will focus on belaying and related principles starting with standard sport climbing all the way up to advanced techniques to move large groups across dangerous terrain. All participants must have prior roped climbing experience and commit to all four classes. Ldrs: Patrick McKusky, Dan Richter.

Oct 14 | Sat

LTC

ER: Advanced Mountaineering Program (Fall 2023):

Rappelling: Third of four climbing workshops aimed at developing skills for 3rd, 4th, and 5th class climbing both as a participant or a future Sierra Club M and E leader. This workshop will focus on rappelling using a variety of techniques with a heavy emphasis on redundancy, safety, and efficiency. All participants must have prior roped climbing experience and commit to all four classes. Ldrs: Patrick McKusky, Dan Richter.

Oct 21 -22 | Sat-Sun

LTC

ER: Advanced Mountaineering Program (Fall 2023):

Anchors & Systems: Fourth of four climbing workshops aimed at developing skills for 3rd, 4th, and 5th class climbing both as a participant or a future Sierra Club M and E leader. This weekend completes the series of AMP workshops at Joshua Tree National Park and focuses on building anchors and applying previously learned skills in real world climbing situations with multiple participants.

All

Thinking of leading a trip or looking for info on a trip you've already decided on?

SPS Safety Chair Doug Mantle invites you to e-chat about it, get his input, flesh out your ideas—
sierradoug@icloud.com.

OUTINGS

Call for Outings!

Outings leaders, we need more SPS trips scheduled! Please consider leading a trip or two. Phil A. Bates, SPS outings chair, can help you with what you need to do to get your outing up and running. Also, please don't hesitate to contact Doug Mantle, SPS safety chair, in planning a safe outing during this season to avoid dangerous stream crossings and handle this year's incredible amount of Sierra snow.

participants must have prior roped climbing experience and commit to all four classes. Ldrs: Patrick McKusky, Dan Richter.

Nov 11-12 | Sat-Sun

LTC

C: Wilderness First Aid Course: The course runs from 7:30 am to 5:30 pm on Saturday and Sunday in Fullerton plus four hours of video lectures (on-demand) during the following week. This course meets the 24-hour WFA requirement for I/M/E leader ratings. Fee includes instruction, pdf of course notes and two laminated cards with response protocols. COVID precautions include distancing when possible and masks. Proof of CPR within previous 5 years, signed release of liability and proof of COVID vaccination status are required to enroll. Fee \$180 (full refund until 10/13/23). For sign-up, see instructions and application at <http://wildernessfirstaidcourse.org>.

Dec 2-3 | Sat-Sun

LTC, WTC, HPS, DPS, SPS

I: Navigation: Mission Creek Preserve Navigation Noodle: Navigation noodle at Mission Creek Preserve to satisfy the basic (I/M) level navigation requirements. Saturday for practice, skills refresher, altimeter, homework, campfire. Sunday checkoff or additional practice. Medical form required from all participants. Send email with contact info (mailing address, phone numbers), navigation experience/training, any WTC, leader rating, rideshare to Leader: Robert Myers. Assistant: Ann Shields. Note: Early

(at least two weeks prior to the event) sign-up for all navigation checkoffs and practices is recommended. These outings require substantial pre-outing preparation work, including completion of both a comprehensive written exam and a route planning assignment that will be mailed to you prior to the checkoff. See Chapter 6 of the *Leader's Reference Book* for more information.

Please note: Currently the Sierra Club requires all participants on an outing more than an hour from help to complete a medical form, and leaders for such outings must complete a safety management plan. Both are fairly simple forms, which are available at the LTC web site here: <https://www.sierraclub.org/angeles/leadership-outings/forms-resources>.

Treasurer's Statement Year to Date (1/1/2023-05/10/2023)

Money In		\$5590.82
Donations		660
Interest		0.82
Membership		1335
Banquet Income		3595
Money Out		-\$5855.44
Banquet		-\$494.63
Echo Expense		-\$195.84
Postage		-\$82.00
Printing		-\$113.84
Office Expenses		-\$99.00
PayPal Fees		-\$65.97
	Money In	\$5590.82
	Money Out	-\$5855.44
	Net Total:	-\$264.62
ASSETS		
Paypal		\$2556.14
Checking		\$6004.18
Savings		\$3290.78
NET WORTH		11,851.10

OUTINGS

You can visit the SPS website for an up-to-date listing of outings at <http://www.sierraclub.org/sps>.

Wilderness Permit Info

Most wilderness permit reservations are now made through <http://recreation.gov>. For day use permits for Desolation Wilderness, get a free permit from a local Forest Service office any time of year or at the trailhead in summer. For overnight permits year round, go to recreation.gov.

INYO NATIONAL FOREST

Web site: www.fs.usda.gov/main/inyo/home

All wilderness permits are reserved through <http://recreation.gov>. Follow instructions regarding permit pick up. This includes the “walk-up” permits (and you now have to pay for them!).

Eastern Sierra InterAgency Visitor Center, Lone Pine, CA
(760) 876-6200

White Mountain Ranger Station
Bishop, CA 93514
(760) 873-2500

Mammoth Lakes Visitor Center
Mammoth Lakes, CA 93546
(760) 924-5500

Mono Basin Scenic Area Visitor Center, Lee Vining, CA 93541
(760) 647-304

KERN PLATEAU

Web site: www.fs.usda.gov/sequoia

Wilderness permits are required only for overnight stays in the Golden

Trout Wilderness. For trips departing from a Sequoia National Forest trailhead, permits are free via email using the application you'll find at https://www.fs.usda.gov/detail/sequoia/passes-permits/recreation/?cid=fsbdev3_059517. For entry into the Golden Trout Wilderness from Inyo NF or Sequoia/Kings Canyon NPS, make your reservation through <http://recreation.gov>.

Cannell Meadow Ranger District
105 Whitney Road
P.O. Box 9
Kernville, CA 93238
Phone: 760/376-3781
Fax: 760/376-3795

Tule River Ranger District
32588 Highway 190
Springville, CA 93265
Phone: (559) 539-2607

YOSEMITE NATIONAL PARK

Web site: www.nps.gov/yose

Yosemite wilderness permit reservations become available by lottery twenty-four weeks in advance through <http://recreation.gov>. Any remaining reservations become available on a first-come, first-served basis after the lottery process is complete for that week's reservations up until seven days in advance. May-October walk-up unreserved permits (40% of the trailhead quota) are available on a first-come, first-served basis beginning at 11:00 a.m. on the day before the intended date at permit issuing stations. Reservations aren't needed from November through April, but permits are required. Trailhead quotas are in effect in winter. See <https://www.nps.gov/yose/planyourvisit/wildpermits.htm>.

If your starting trailhead is outside Yosemite NP, obtain your permit from the land agency that manages that trailhead.

SEQUOIA AND KINGS CANYON NP

47050 Generals Highway
Three Rivers, CA. 93271-9599
Phone (559) 565-3766 for permit & trail info. Fax (559) 565-4239

For general information go to www.nps.gov/seki. For wilderness permits go to www.nps.gov/seki/planyourvisit/wilderness_permits.htm.

Up to six months in advance of your trip, permits may be reserved at <http://recreation.gov>. Permits may be self-issued outside the quota period, from roughly mid-September to mid-May.

SIERRA NATIONAL FOREST (WESTSIDE) ENTRY

Web site: <https://www.fs.usda.gov/sierra>

Ansel Adams Wilderness—North
Bass Lake Ranger District
57003 Road 225
North Fork, CA 93643
Phone: (559) 887-2218

Ansel Adams Wilderness—South
John Muir, Kaiser, and Dinkey Lakes
Wildernesses
Pineridge/Kings River Ranger District
29688 Auberry Road
Prather, CA 93651
Phone: (559) 855-5355

See https://www.fs.usda.gov/detail/sierra/passes-permits/?cid=fsbdev7_018115 for wilderness permit information; reservations are made at <http://recreation.gov>.

SPS Management Committee Meeting Minutes
Monday, March 6, 2023, 7:00 pm via Zoom

1. Call to Order. Present: Jason Pair, Chair; Paul Garry, Vice Chair; Phil S. Bates, Secretary; Dan Richter, Archivist; Joe Wankum, Webmaster; Patty Kline, Merchandise ; Doug Mantle, Safety Chair; and Tina Bowman, *Echo* Co-Editor and Keeper of the List.
 2. Standard business and reports
 - a. Approval of minutes—December 2022 minutes were unavailable for review. Minutes to be circulated to MComm prior to next meeting.
 - b. Chair (Jason Pair)—Expressed excitement about upcoming year as new chair, welcomed the new MComm members and asked for guidance from long-serving members.
 - c. Vice Chair (Paul Garry)—The January 2023 banquet was well attended (62 attendees) and very successful, though there were some technical problems. A recording is available for viewing on YouTube. Sharply higher venue costs and unchanged ticket prices resulted in a large loss, which will require price increases for this year's banquet.
 - d. Secretary & Chair of the Emblem Committee (Phil S. Bates)—There are no emblem awards in process, though information requirements have been provided in response to one inquiry.
 - e. Outings (Phil A. Bates)—not present.
 - f. Treasurer (Laura Newman)—not present, but recent financials were circulated to MComm.
 - g. Outreach—no report.
 - h. Archives (Dan Richter)—All SPS archives are being forwarded to UCLA, a process that should be complete by this autumn. Dan would like to include a written overview on the role of the SPS.
 - i. *Echo* (Tina Bowman)—Deadline for next issue is May 25th.
 - j. Mountain Records (Harry Langenbacher)—a successor is needed.
 - k. IT (Greg Mason)—not present.
 - l. Keeper of the List (Tina Bowman)—The MComm approved the revised ratings for Split Mountain (from Class 1 to Class 2) and Mt. Kaweah (from Class 1 to Class 2), which had been approved by a vote of the membership in December 2022.
 - m. Website (Joe Wankum)— All *Sierra Echo* issues back to 1970 are now accessible on the SPS Website.
 - n. Conservation (Sharon Moore)—not present.
 - o. Safety Chair (Doug Mantle)—Given the record breaking snowfall in the Sierra, an *Echo* article is planned and perhaps special training on water crossing safety is under consideration.
3. Old Business—none
 4. New Business
 - a. Next meeting date—May 15, 8pm PST
 - b. In the *Echo* we will continue to list the area representatives as part of the appointed management committee.
 - c. There was a discussion on possible approaches for recruiting new SPS members, both via on-line and in-person outreach methods.

SPS Management Committee Meeting Minutes
Monday, May 15, 2023, 7:00 pm via Zoom

1. Call to Order. Present Jason Pair, Chair; Paul Garry, Vice Chair; Phil S. Bates, Secretary; Dan Richter, Archivist; Joe Wankum, Webmaster, Patty Kline, Merchandise; and Tina Bowman, *Echo* Co-Editor.
2. Standard business and reports
 - a. Approval of minutes—The December 2022 minutes were unavailable to review; the March 2023 written were reviewed and approved by the committee.
 - b. Chair (Jason Pair)—To encourage new SPS memberships, Jason posted an overview of the benefits of SPS membership on the SPS Facebook page.
 - c. Vice Chair (Paul Garry)—The venue for the upcoming Desert Peaks Section Banquet in Pasadena was mentioned for consideration for future SPS banquets. Paul asked for speaker suggestions for the next SPS banquet. Jason mentioned the writer and Sierra backpacker Kim

SPS Management Committee Meeting Minutes, Monday, May 15, 2023
continued from previous page

Stanley Robinson and Patty suggested the blind mountaineer Eric Wiehenmeyer. Efforts will be made to contact these potential speakers.

- d. Secretary (Phil S. Bates)—There were no requests for SPS awards and the only inquiry about SPS membership was by a person who has yet to climb the required minimum number of peaks. Reflecting inquires by organizations wishing to establish linkages with the SPS website, the committee agreed that such linkages should only be considered for organizations with common interests related to the Sierra Nevada.
- e. Outings (Phil A. Bates)—Not present.
- f. Treasurer (Laura)—Not present, but financial reports were circulated to the Management Committee members prior to the meeting.
- g. Outreach—No report.
- h. Archives (Dan Richter)—Forwarding of archives to UCLA continues.
- i. *Echo* (Tina Bowman)—The deadline for the next issue is May 25. Tina requested copies of

the SPS Management Committee Minutes for the December 2022, March 2023, and May 2023 for inclusion in the next issue.

- j. Mountain Records (Harry Langenbacher)—Not present. Harry is still looking for a volunteer to take over his position.
 - k. IT (Greg Mason)—Not present.
 - l. Website (Joe Wankum)—Joe has completed the indexing process for *Echo* issues between 1999 and the present. He is now working on indexing issues from earlier in the 1990s. Also, efforts will be made to link the January SPS Banquet video (currently on general YouTube) to the SPS YouTube webpage.
 - m. Conservation (Sharon Moore)—Not present.
 - n. Safety Chair (Doug Mantle)—Not present.
- 3. Old Business—None.
 - 4. New Business
 - a. Next meeting date - July 10, 7pm PST
 - b. Membership renewal alerts will be adjusted to identify members with multi-year renewals.

Wear 'em! Give 'em!

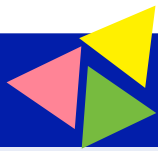
SPS TEES



Front: NORTH PAL
Back: FULL SPS LIST
By geographic area with Mountaineer & Emblem peaks highlighted

S, M, L in Ash & Sand
\$20 includes shipping
Send your order to:

Patty Kline, 7409 Hermosa Ave
Yucca Valley, CA 92284
Make check payable to SPS
CST 2087766-40



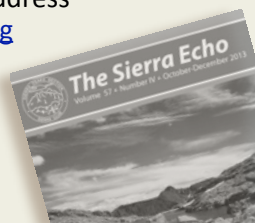
Mystery Peak Challenge Answer

Ron Bartell was on Red Hill, the cinder cone just north of Fossil Falls and south of the Coso Junction rest area on Highway 395, when he took the photo that shows Olancha Peak. First to answer correctly was our new chair, Jason Pair, followed by Romain Wacziarg, and Mark Goebel—all within about ninety minutes of the link to the digital *Echo* going out. Thanks to new member Dylan Kilby for taking a stab at it too! Others answering correctly were Jason Seieroe, Phil Kohlmetz, George Christiansen, and Jack Wickel. Another guessing but not getting the right peak was Bart O'Brien (he lives on the west side, so the sight of Red Hill is not a common one for him).



REGARDING DISTRIBUTION OF THE *ECHO*

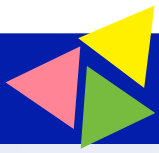
Please contact this email address newsletter@sierrapeaks.org for any problems with distribution of hardcopy or email versions.



The Sierra Echo

is a quarterly publication of the Sierra Peaks Section of the Sierra Club's Angeles Chapter. For more information, see the back of this newsletter. All questions, copy, and photo submissions should be directed to Tina Bowman, Editor, *The Sierra Echo*, preferably via email at tina@bowmanchange.com. The *Echo* will be available as a PDF download at the SPS website and via a link sent to all SPS members and *Echo* subscribers.





Mystery Peak Challenge

This occasional just-for-fun puzzle is for you to figure out which Sierra peak or peaks are featured in the image. If you have a fine mystery peak puzzle to challenge *Echo* readers, please send it to tina@bowmanchange.com. We welcome any mountain images, including those from popular culture—imagery used and abused in film and print!

This photo is one of many taken during an aerial snow survey this year by NOAA (National Oceanic and Atmospheric Administration) Corps Officers at altitudes of 500 to 1000 feet above ground level in the Sierra Nevada. The National Operational Hydrologic Remote Sensing Center (part of NOAA) has developed and maintains an Airborne Gamma Radiation Snow Survey Program to make snow water equivalent and soil moisture measurements. Can you identify the peaks on the SPS list in this photo?

Send your answer to Tina Bowman at tina@bowmanchange.com.



Echo Readers! Are you on Facebook? If so, you can follow the **SPS-Sierra Peaks Section** Facebook page to see and share news of current conditions and recent climbs.



The Sierra Echo

Volume 67 ▲ Number 3 ▲ July-September 2023

The Sierra Echo is published quarterly by the Sierra Peaks Section (SPS) of the Sierra Club, Angeles Chapter.

Publication dates are Mar 15, Jun 15, Sept 15, and Dec 15. All text submissions for publication—including trip reports, articles, etc.—can be submitted in electronic format such as MS Word (preferred), Pages, email, or through regular U.S. mail (electronic format is preferable). Photos may be submitted as electronic files (jpeg, tiff, or Photoshop in a resolution high enough for print media) or submitted as prints or slides. If submissions are to be returned to you, please include a return envelope with sufficient postage. **All submissions should be sent to Tina Bowman or emailed to tina@bowmanchange.com.**

Deadline for all submissions is three (3) weeks prior to the publication date, i.e., Feb 22, May 25, Aug 25, and Nov 24.

The Sierra Echo is the property of the Sierra Peaks Section of the Sierra Club, Angeles Chapter. All rights reserved. The Sierra Peaks Section maintains a website at www.sierraclub.org/sps.

Subscriptions \$10 per year, due by January 1, delinquent after March 31. Subscribing to the *Echo* is a requirement for membership in the SPS. A suggested donation to the section is \$25, which includes the \$10 subscription and a \$15 donation to the SPS operating fund. Thank you for your support of the SPS. For new subscriptions and renewals or to apply for membership, fill out the subscription and renewal form or new member form that can be found on the SPS website under “Membership Requirements” at the bottom of the page: <https://www.sierraclub.org/angeles/sierra-peaks/new-members#mr>. Mail the form and your check to the SPS Treasurer, 11755 Entrada Ave., Porter Ranch, CA 91326; make sure to include your Sierra Club number if you are applying for

membership. To subscribe or renew on-line, please email the form to the treasurer (sierrapeakstreasurer@gmail.com). Then pay via PayPal for renewals using the email address sierrapeakstreasurer@gmail.com. Note that first-year memberships or subscriptions are free. New applications received after October 1 are credited to the following year. Only one *Echo* subscription is necessary for multiple members of a family residing at one address. Contributions or gifts to the Sierra Club are not tax deductible.

Advertising Private activity announcements and advertisements are accepted at the following rates: \$1 for the first four lines and \$1 each additional line. Other announcements and product/service advertisements are \$1 per line or \$25 for half-page space. Send copy and check to the *Echo* Editor, payable to SPS.

Address Changes Send to the treasurer via email sierrapeakstreasurer@gmail.com.

Peaks List Copies of the SPS Peaks List can be downloaded from the website here: <http://sierraclub.org/angeles/sierra-peaks/sps-peaks-list>.

Missing Issues Inquiries regarding missing issues should be directed to the section mailer at: newsletter@sierrapeaks.org.

Awards Send notification to Secretary Phil S. Bates: email philsbates54@gmail.com. Awards merchandise is available through Patty Kline at 7409 Hermosa Ave, Yucca Valley, CA 92284, and include emblem pins (\$20) and SPS section patches (\$5). Make checks payable to SPS. All prices include sales tax.

**Sierra Club, Angeles Chapter
Sierra Peaks Section
3250 Wilshire Blvd., Suite 1106
Los Angeles, CA 90010**

ADDRESS SERVICE REQUESTED